



Account of A-Bomb by Rikuko Tanaka

by Rimban Katsuya Kusunoki

The 80th Anniversary of Hiroshima and Nagasaki A-Bomb.

2025 is the 80th anniversary of Hiroshima and Nagasaki A-Bombings. Together, with the Seattle Hiroshima Club, I will



introduce the account of A-Bomb *Hibakusha* survivor who has a connection to Seattle. On this occasion, we learn from the tragedy which happened 80 years ago and think about “Peace.” Rikuko Tanaka was aged 18 at the A-bombing. An interview with Rikuko Tanaka and the Seattle Hiroshima Club can be viewed here: <https://www.youtube.com/watch?v=uid1FAMU8w4>



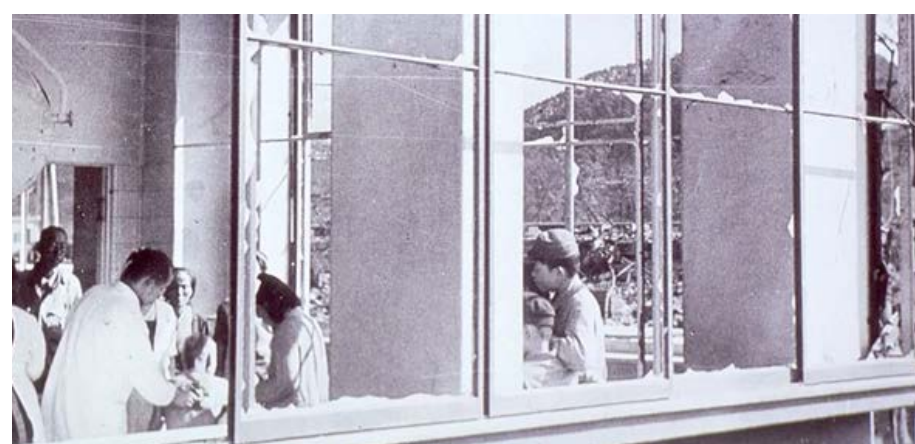
In 1945, I was a student at the nursing school at Japan Red Cross Hospital. On Aug. 6th, I was delivering meals for sick nurses at the dorm. Just before arriving at the dorm, I saw a flashing light and a blue flame. Not having enough time to evacuate to an air-raid shelter, I ran into the entrance of the dorm, where I ended up being buried under the collapsed building. When I became conscious, I couldn’t move an inch.

After several hours, I cried for help. And the sick nurses said, “Oh, there is Yamada!” because my maiden name is Yamada. But finally, these two nurses, my classmates, abandoned me. That’s just the way it was. I kept crying for help. I shouted myself hoarse. I realized it was no use crying when nobody was there. I thought, “If I died here, I would like let somebody know about my death.” When I sensed someone approaching, I began shouting again. But I was far below the building, so no one noticed me. Finally, I gave up but still wanted to let someone know about my death. I chanted “Namu Amida Butsu” (recitation of Amida Buddha’s name) and I said goodbye to my dad, mom, my siblings and all my friends. I said goodbye to everyone.

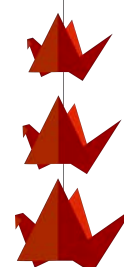
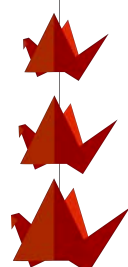


Photograph of the medical staff helping a child in the aftermath of the A-Bombing. (Image from The International Campaign to Abolish Nuclear Weapons: <https://www.icanw.org/children>)

At that moment, I heard someone speaking again. I cried for help once more, and they rescued me. An old man and his son saved me from the building. When rescued from the building, I was covered with dust from head to toe. I tried to say thank you, but I had no voice. The old man said, “Good thing you are rescued.” He brushed the ashes from my head and body and went away with his son. So, I don’t even know the names of my life savers. I am not sure, but that was probably seven or ten hours after the bombing.



Conditions at a Hiroshima hospital following the A-Bomb. (Image from National Library of Medicine: <https://circulatingnow.nlm.nih.gov/2024/08/08/a-photographic-view-into-the-medical-response-at-hiroshima/>)





Charred nurse's jacket found in Red Cross Hospital, Hiroshima. (Image from Picryl.com:

<https://picryl.com/topics/hiroshima+red+cross+hospital+atomic+bomb+survivors+hospital>)

I thought I must go to the dorm near the hospital and started walking. On the way, all the buildings were collapsed. Injured people and burnt people were walking. Their clothes were tattered, and their skins were peeled off and hanging from their bodies. I thought I had put on shoes, but I had bare feet.



Victims of the A-Bomb in Hiroshima receiving emergency treatment from military medics in the street. (Image from George Charles Darley's article in Aljazeera:<https://www.aljazeera.com/features/2024/10/27/michikos-story-how-a-japanese-girl-survived-an-atomic-bomb>)

When I arrived at the dorm, they were preparing meals outdoors. The dorm was made of wood, so many people were still trapped under the collapsed dorm. The hospital was used as an army hospital then. Although we examined citizens on outpatient basis, most of the hospitalized patients were soldiers. Relatively healthy people among them worked together and saved many people from the collapsed dorm.

But finally, fire spread over the dorm, and we couldn't save everyone. On that night, to prevent further fire from spreading, we used bashing tools and bashed the fire sparks down.

On the night of Aug. 6, we couldn't sleep in the hospital because all the floors were scattered with broken glass. We slept on the grass in front of the hospital, five or six of us, in a cluster. We slept on grass for nearly a week.

Again, wounded soldiers supported us. They picked up a big furnace from the ruins, procured stuff from somewhere, and cooked rice. We could hardly find rice grains in their "rice" though. Anyway, we ate somehow. Once a cow escaped from a slaughterhouse called Yoshijima. The soldiers killed that cow and cooked it for everyone. It was such a very precious meal. We did not have a bath, so we brought a drum, covered it with straw mats and tin plates, put boiled water into the drum, and took a bath.

We lived like that for two weeks. Then we cleaned up the hospital little by little. After cleaning, some beds became available. Gradually we moved to the beds. At the beginning of September, a typhoon hit the hospital. We slept on the third floor, then, in a big auditorium. There we placed many beds and slept together. All the windows were broken. The strong winds of the typhoon blew out all our futons. We got soaked. In December, it was still not normal, but we could keep up the front somehow. We could take classes again.

I hope for a world free from nuclear weapons. Life is short and we live only one time. I think we should help each other and realize world peace.



Hiroshima Red Cross Hospital, October 1945. (Image from Picryl.com:

<https://picryl.com/topics/hiroshima+red+cross+hospital+atomic+bomb+survivors+hospital>

October Chair's Letter

By Tyler Moriguchi



Autumn is one of my favorite times of the year. I enjoy a warm bowl of soup or stew on a cool evening or a brisk walk in the crisp morning air. It also brings a smile to my face to see children and their families back at temple as Dharma School resumes. Thank you to the Dharma School board and teachers who give generously of their time and energy to share the Dharma with our youngest members.

Volunteering as a Dharma School teacher is one form of the Paramita of Dāna, or Giving (Japanese: fuse, 布施). Over the coming months we will be seeking Sangha members to serve as Betsuin Board members, volunteers for our upcoming joint BCA National Council Meeting/Northwest District Convention, and committee members for various 125th Anniversary events. The success of all these relies greatly on the Dāna of Sangha members. Please consider serving in whatever capacity you feel comfortable.

I hope you will join us for our SBBWA Memorial Service on October 19th and Hatsumairi Service on October 26th.



2025 Salmon Dinner Fundraiser

Thank you to those that participated in the Seattle Betsuin's Salmon Dinner Fundraiser held on September 20th. We appreciate the support you have provided in this fundraiser and hope that you enjoyed the salmon or pork entrée that has had favorable reviews on the meal's taste. This has been a consistent comment since 2013 when this event was first held as an alternative fundraiser from the Spring Bazaar. While sales were down a bit from the last event held in 2023 with over 1,000 meals sold, we had 734 pre-sold meals for 2025. Preliminary results before taking into account the expenses, the event raised just under \$23K including \$2K in additional donations received on orders.

The Temple appreciates the support of the 200+ individuals that submitted orders. The funds raised from the event help support the Temple in its operations and Jodo Shinshu programs. Recognition and thanks must also go to the Sangha volunteers that helped in putting on the event Saturday. This started the Sunday before with the start of preparing the tsukemono. The Saturday event volunteers for all tasks helped to make sure the fundraiser went as seamless as possible. This included handling the drive-thru orders within the 15-minute pick-up time increments. About half of 15-minute slots had approximately 50 entrees minimum to deliver with 3 approaching 100 entrees ordered. A special thanks to the Salmon Dinner Committee members and a handful of other Sangha members who spent all day the day before the event baking and prepping the food for the event.

Thank you again for supporting the Seattle Betsuin Buddhist Temple and look forward to your continued support.

Musical Notes

Submitted by Kemi Nakabayashi

Rev. Fukami's hichiriki performances on August 31 and September 7 impressed those in attendance and made for a very special start of the Dharma School year.



Thank you to temple string players Hieu, Ann, Aki and Claire for rehearsing with the Seattle Gagaku Group members Esther, Ayano, Rev. Kusunoki and me along with Yumi Fukami for the special arrangements of "Sakura, Sakura" and the melody from the "New World Symphony" by Anton Dvorak. Special kudos to Jesse Moneyhun, our Betsuin program staff member, who made possible the amazing concluding selections with his impressive drumming, along with Jon Butler on keyboard and Rev. Fukami. If you missed the in-person performances or wish to hear them again, they are posted on the Seattle Betsuin YouTube channel!

<https://www.youtube.com/@SeattleBuddhistTemple>



Betsuin Strings and Gagaku musicians with Rev. Ryosuke and Yumi Fukami (photo by Susie Yamane)

Also Rev. Fukami encouraged everyone to check out his YouTube channel. He also has "Isn't She Lovely" by Stevie Wonder posted there:

<https://www.youtube.com/@japanesemusic.hichiriki>

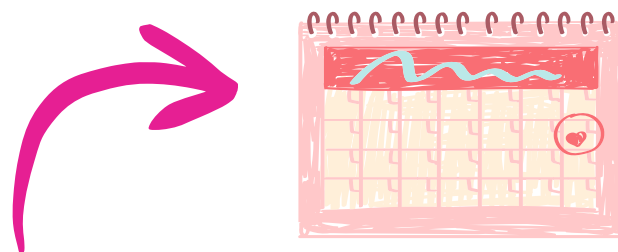


Rev. Fukami acknowledges Jesse and Jon (photo by Kemi Nakabayashi)

Jim Norton and I returned from Honolulu where we joined BCA singers from Tri-State Denver Buddhist Temple and California along with singers from the Hawaii island temples for the Choralfest held September 20 and 21 at the Honpa Hongwanji Mission of Hawaii. The singers rehearsed Saturday afternoon with conductor Nola Nahulu and piano accompaniment by Francis Okano, chair of the Hawaii Music Committee. The Sunday morning Music Service included the five pieces the singers learned in advance to present as a mass choir of 105 singers, including a youth choir that Ms. Nahulu invited. The first Choralfest was 20 years ago and over the years the current format was organized every other year through 2018. The 2020 Choralfest was in the works, but cancelled due to the Covid-19 pandemic, so this event was the first subsequent Choralfest event.



BCA singers from Tri-State/Denver temple, California, and Seattle with conductor Nola Nahulu and piano accompanist Francis Okano from Honolulu at Choralfest 2025 (photo from Tri-State Denver singer)



Please mark your calendars for the Autumn Music Service on November 23 featuring Rev. Peter Hata as the guest speaker. Rev. Hata, now retired from his most recent post at Los Angeles Higashi Honganji, is the original guitarist for the Southern California-based band Hiroshima. He has selected a special topic for a Saturday afternoon seminar on November 22 as well. See flyer for details on Connecting the World Through Music: How Astronaut and Musician Sarah Gillis Brought Together Youth Orchestras From Around the World...While in Orbit Hundreds of Miles Above the Earth.

Sunday Service and Sunday

Dharma Exchange Notes

Submitted by Irene Goto

Sunday Services take place each Sunday at 10:00AM in person in the temple's gym. To view the service remotely, live-streamed, sign-up for Seattle Betsuin's weekly e-news (newsletter) at www.SeattleBetsuin.org and receive the live-stream link and other news via e-mail.

Dharma Exchange takes place after Sunday Service from 11:00AM to 11:30AM, currently meeting in the gym, in-person, only. After enjoying coffee and tea together, we hear and discuss various aspects of the Dharma, usually led by a minister. All are invited to join.

Recorded Sunday Dharma Messages, and occasional Dharma Exchanges, are available at www.youtube.com/SeattleBuddhistTemple

August 31, 2025

[Dharma MessageSeattle Betsuin Sunday Dharma Message | Reverend Ryosuke Fukami | 2025-08-31](#)



Rev Kusunoki on sho, Rev Fukami on hichiriki, Esther Sugai and Kemi Nakabayashi on ryuteki

Dharma Exchange Guest minister and Rimban Kusunoki's friend, Rev Ryosuke Fukami, gave solo presentations on the hichiriki, as well as presentation with members of Seattle Betsuin's gagaku group. Links to the recordings are here:



Rev. Fukami on *hichiriki*

[Gagaku Performance | Seattle Betsuin Buddhist Temple | 2025-08-31](#)
[Reverend Ryosuke Fukami Solo Hichiriki Performance | Seattle Betsuin Buddhist Temple | 2025-08-31](#)



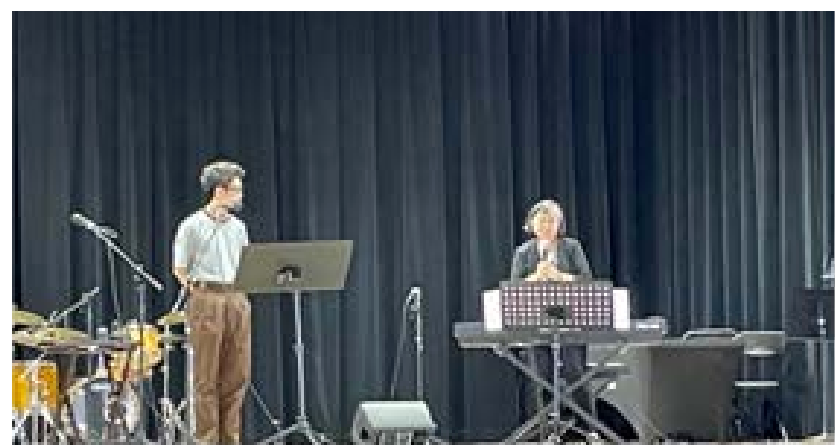
September 7, 2025

[Dharma Message Seattle Betsuin Sunday Dharma Message | Reverend Ryosuke Fukami | 2025-09-07](#)
[Dharma Exchange Reverend Ryosuke Fukami Full Hichiriki Performance | Seattle Betsuin Buddhist Temple | 2025-09-07](#)

Guest minister, Rev Ryosuke Fukami, performed with members of Seattle Betsuin's string ensemble and gagaku group on the hichiriki.



Rev. Fukami on *hichiriki*, Jesse Moneyhun on drums, Jon Butler on keyboard.



Rev. Fukami, left and Kemi Nakabayashi, right.



Strings and Gagaku together

September 14, 2025

[Dharma Message Seattle Betsuin Sunday Dharma Message | Rinban Kusunoki | 2025-09-14](#)
[Dharma Exchange Is AI Capable of Compassion? | Erin Hoffman-John | Seattle Betsuin Buddhist Temple | 2025-09-14](#)

Sunday Service and Sunday
Dharma Exchange Notes
Continued



Dharma School parent and student at Institute of Buddhist Studies, Erin Hoffman-John, talks about Artificial Intelligence and the internet.

September 21, 2025
Dharma Message [Living In Gratitude](#) | [Dharma Message](#) | [Rinban Katsuya Kusunoki](#) | 2025-09-21



Slide showing discrimination against Japanese and Japanese Americans



Mas Tahara, Doug Hanada, Linda Ishii, members of The Tengu Club

September 21, 2025
Dharma Exchange <https://www.youtube.com/watch?v=rfU9I-UMOGU>

Mas Tahara who compiled Tengu – Tales Told by Fishermen & Women of The Tengu Club of Seattle, said Hilary Hutcheson came up with the idea of making a documentary film of the Tengu Club, after reading his book. She starred in the film as the person "Awakening", to who she is, and started a mission to find out what her older family members and their generation of nikkei had gone through. In the process, she discovered Ki-Zu-Na, the person-to-person bond that is strong and long-lasting. Hilary normally attends and participates in the film presentations. Since the film was first shown a year ago, more than a dozen or so public events have been held in the Seattle area.

Dharma School News

Submitted by Joan Nakano



Welcome Back to Dharma School!

September is the start of our Dharma School (DS) year! We started our first day of DS with joy and music as students and families joined the sangha for a beautiful Hichiriki concert. It was so nice to see and hear DS parents, teachers, and students share the stage with Reverend Ryosuke Fukami. We encourage all budding musicians to join the Bodhi Ensemble and share their talents throughout the year.

Also in September, DS families gathered in the dining room to register, enjoy pizza and games, and connect with one another. Students and parents met representatives from Taiko, Bodhi Ensemble, Scouts, and Camp Fire, and spent time getting to know their teachers and classmates in their respective classes.

We're hopeful to transition back into our original classrooms this school year. DS registration is ongoing, so please invite your friends and family to join our growing community!

A heartfelt thank you to our sangha for supporting DS activities. We hope everyone enjoyed the Salmon Dinner fundraiser. Our first DS fundraiser of the year will be a gyoza lunch on October 12, with proceeds helping subsidize DS students attending the NW Convention in February.

Thank you all for supporting Seattle Betsuin's Dharma School!
Gassho,
Claire and Yvette

Seattle Betsuin Dharma School Event

10:00 - 10:45 am Sunday Service
10:45 - 11:30 am Dharma School

10/5/2025

Fire drill and making DS fundraiser poster

10/12/2025

DS fundraiser and Dharma Wheel

10/19/2025

**Meeting and sharing memories of DS with
Fujinkai members**

10/26/2025

Table or Treat



<https://seattlebetsuin.com/>



SBBWA

Submitted by Lauren Asaba

Seattle Betsuin Buddhist Women’s Association SBBWA’s Mission is to cultivate religious awareness as Jodo Shinshu Buddhist women and promote fellow-ship among its members; to serve and support the Seattle Betsuin, and contribute services to the welfare of the community.

There were lots of opportunities this past month to learn how to make some favorite traditional foods that many of us don't make at home. I think many would agree that this is so much more fun to do with friends. Thank you to our members and supporters that helped to chop cabbage, measure, mix and clean up so that we could include tsukemono with our salmon dinners.



Tsukemono making, from left: Judith, Char, Machiko, Joan, Nina, Kanako, Fran



Dishwashing: Mai



Image from Kikkoman:
<https://www.kikkoman.com/en/culture/foodforum/japanese-style/27-3.html>

And an extra big thank you to our Food Committee Chairs who were given the task of making ohagi for the Salmon Dinner Fundraiser and Fall Ohigan service all on the same weekend! Co-chairs Ann H and Gail S organized a 3-day event to measure, roll, wrap and package ohagi for both events and made sure all of the helpers were well fed by providing delicious worker meals. Arigato to all!



Ohagi making: from left, Shizu, Erin, Susie



From left: Loraine and Darlene

SBBWA continued

Submitted by Lauren Asaba



From left: Kanako, Ann, Nina, Susie



Obutsudan with Ohagi offering

Many of us that attended the World Buddhist Women's Convention in Kyoto, Japan in 2023 had limited Japanese language skills (speaking for myself). We were fortunate to have Emi N volunteer her time to provide Japanese language lessons via Zoom for us. She was a patient and proficient instructor who prepared useful and fun lesson plans.

If you had a chance to attend the Tokyo Groove Jyoshi benefit show at Terry's Kitchen, I'm sure you'd agree that the music and community support was great! A special thank you to Emi N who skillfully interpreted for the band so that we could understand their heartfelt message.



Tokyo Groove Jyoshi with local musicians Jeff C and Leonard B.



Tokyo Groove Jyoshi with Emi N

Upcoming Activities

No Pickleball this month

October 19th- SBBWA Memorial Service

October 19th- SBBWA BoD Meeting

SEATTLE BETSUIN BOARD MEETING HIGHLIGHTS

Submitted by Ann Oxrieder



September 25, 2025

The board hear reports on the following:



The new mission statement: We are a welcoming community cultivating a life of mindfulness, compassion and gratitude for all.



Tyler has begun discussions with Wisteria View Housing leadership and the Low Income Housing Institute to explore potential sale/development opportunities of temple properties.



An update on reconstruction which includes the Hondo/Onaijn being in place in February.



A plan to include all Sangha members in conversations of how the temple can cut costs and raise money to return the endowment fund to its original state, if not grow it.



The Temple will have a table at the November 15 Ayame Kai Holiday Craft Fair to be held this year from 10 a.m. to 2 p.m. at the Tukwila Community Center.

As we prepare for the grand re-opening of our temple, we are asking Sangha members to consider serving on the Board of Directors. This is a pivotal moment for our temple and a chance to help guide our sangha through renewal, growth, and change. Your leadership can play a key role this process.

Board members play a vital role in keeping our temple strong and vibrant. From supporting programs and events, to guiding financial and strategic planning, to ensuring our facilities continue to serve our community, the work of the board helps shape the temple experience for everyone. The commitment is a 3-year term with monthly meetings and being involved with various temple activities.

The months ahead will be especially meaningful as we emerge from the challenges of the arson and prepare to reopen our temple. We need dedicated individuals who are passionate about our mission and eager to help strengthen our temple for future generations.

If you have ever considered taking a more active role in our temple or have questions about serving on the board, please reach out to Ann O or Grace T.

**Gassho,
Ann O. and Grace T.**

Nishi Honganji's Goeido (left) and Amidado (right). Image from: <https://www.japan-guide.com/e/e3920.html>

PACK 252 UPDATE

Submitted by Mitsue Giulietti



September 7, 2025 at Wisteria Park

Beginning of our 2025-26 school year!
Introduced the Pack leaders that were present and helped lead the Cubs with activities. The parents met on the side to discuss the schedule, goals, and fundraising. Popsicles at the end of the meeting!



September 13th/14th:
Arrow of Light camp
out with Troop at
Northbend camping
site.



September 21:
Regular den meeting in the Temple gym.

TROOP 252 UPDATE

Submitted by Mark Henley

Article by Jasper H.



In the month of September 2025, Troop 252 did many things. On Sunday, September 7th, we had our first meeting of the year at Wisteria Park where we planned a camping trip for the Arrow of Light scouts. Scoutmaster Ketcherside also passed out awards from Summer Camp Meriwether. On September 13th to 14th, Troop 252 hosted the Arrow of Light cub scouts at the Temple's North Bend property. During this trip, we introduced the Arrow of Light Scouts to activities that Troop 252 does including setting up tents, cooking meals together, and participating in various outdoor activities such as showing them the river and team-building games and how to keep an outdoor kitchen area clean and safe. The scouts also learned about maps and the ten essentials needed to survive if lost in the woods. Additionally, we held a campfire storytelling session where everyone shared their favorite stories and experiences and we got to make S'mores! It was a fun and educational experience for everyone involved. Troop 252 hopes that the Arrow of Light kids will come away with new skills and great memories! On September 21st, a few of the Troop 252 Scouts rode our bikes in the rain to get shaved ice. There were lots of good flavors like pineapple, banana and mango. At the end of the month we will meet with Judge Eisenberg to discuss "constitutional rights and obligations."





Committee seeks families of individuals housed in Nokotsudo

Last year, the Nokotsudo Committee was formed to explore converting the temple's Nokotsudo (Columbarium) from a temporary storage location of cremains to a permanent Nokotsudo. As part of the committee's work, we are attempting to locate family contacts for the approximately 300 individuals currently housed in the Nokotsudo. If you have a family member in the Nokotsudo, please contact the temple office at office@seattlebetsuin.org.

Also, if you would be interested in a niche in the permanent Nokotsudo, please contact the temple office.





ON BEHALF OF THE MEMBERSHIP COMMITTEE

We would like to “**thank**” the following for contributing their **2025** sustaining membership dues - **the basic dues towards Temple maintenance/operations** (i.e. security-a high priority, staffing, up-to-date tech equipment/maintenance) plus **Religious programs** i.e., (Live Streaming of Sunday services, Special Services, seminars with guest speakers, Sensei’s podcast, and even our book club).



Steven Aisaka, Michael Aoki-Kramer, Gwen Florence, Beverly Glasser, Chris Grabowski, John & Lynda Hamakami, Paul Harada & Michelle Nishina, Cynthia Hinds, Mark & Haru Hirota, Michael John, Malcom & Eileen Kanemoto, Joanne Kimura, Duane & Ann Mayeda, Paul & Teresa Mori, Teruko Nakamichi, Kiyoko Nakanishi, Dang Ngyuyen & Nicole Shimizu, Terry & Gail Suzaka, Naomi Takemura, Mark & Erin Taylor, Calvin & Yvette Terada, Don & Amy Tokunaga, Lloyd Tyner, III, Henry & Christy Watanabe, Keiko Watanabe, Rob Weinsheimer & Kari Palmer, Dennis Yamashita & Elaine Aoki, Curtis Yokoyama, Jason Yokoyama

Compiled by Howard L, Ileene T., Joan N., & Steph O.

We would like to ‘**WELCOME**’ Michael John, Joanne Kimura, and Lloyd Tyner, III as new members of our Sangha. In addition, we want to ‘**WELCOME BACK**’ Michael Aoki Kramer.

Thank you for volunteering!

September Sunday Service

Connie Ozeki-Chinn, Harrison Chinn, Howard Luke, Paul Mori, Kemi Nakabayashi, Betty Nakashima, Kira Nakashima, Steph Ojima, Dean O’ Shields, Ann Oxreider, Alex Sakamoto, Yvette Terada, Erin Taylor, Grace Tazuma, Marissa Wong, Rick Wong, and Charlene Yoritsune

Thank you to Dennis Shibata who comes weekly to clean up in Wisteria Park and around the outside of the Betsuin property.

Thank you to Joan Nakano and Steph Ojima for helping with the newsletter mailing and Fall Ohigan mailing.

VOLUNTEER OPPORTUNITIES!

Interested in helping out during services? Whether it’s setting up, greeting, or tackling cleanup, there’s something for everyone to enjoy. Sign up using the link below!

[SignUpGenius](#)



The Seattle Betsuin
Gratefully Acknowledges the Following Donations from August - September 2025

Services/Ceremonies	Given by:
Wedding	Eric Charnley and Elina Pogosyan
In Memory Of:	Given by:
Kenny Dodobara	Hiroko Janet Kosai, Francis Shintaku
Masako Kubo	Joan Nakano, Frances Shintaku, Masao & Frances Tamekuni
Steve Okamura	Aya (Jean) Deguchi, Wayne Kuramoto, Trisha Morton
Fujie Yamasaki	Loraine Jacobs
Endowment:	Given by:
Endowment Fund	Estate of Katsumi & Teruko (Terrie) Tanino
General Donations:	
Donor:	For:
Harrison Chinn	General Donation
Arisa Sato	Appreciation for Japanese Play Group
Graham Taylor	Appreciation for helping at NPCA Day of Action at Seattle Waterfront



The Seattle Betsuin
Gratefully Acknowledges the Following Donations from August - September 2025

Hatsubon/Obon In Memory Of:

Given by:

Ken Fujioka, Harumi “Marge” Fujioka,
Russell Fujioka

Allan and Ronalee Mizoguchi

Additional donations will be listed in subsequent Newsletter editions.



OCTOBER SHOTSUKI HOYO

The October Shotsuki Hoyo Memorial Service will honor the memory of those listed below who passed away in the Month of October

Adachi, Teruo	Isomura, Katsumi	Mukai, Minoru	Sullivan, Kay
Aisaka, Jordan	Iwai, Shuei	Nakama, Chutaro	Suzaka, Toshiko
Akutsu, Gene	Iwamoto, John	Nakamura, Ichiro	Tachiyama, Takami
Aoyama, Sayeko	Jeppeson, John	Nakamura, Kikutaro	Tagami, Takeji
Asaba, Yetsuro	Jitodai, Hitomi	Nakamura, Masako	Takahashi, Mika
Chiang Ho, Shumien	Kamada, Isao	Nakamura, Tsuruki	Takano, Frank
Chikuse, Masaki	Kamada, Yuriko	Nakanishi, Toshito	Takano, Richard
Deguchi, Tommy	Kaneta, Kito	Nakano, Masa	Takao, Yanosuke
Doi, Richard	Kano, Seiichi	Nakatani, Mihoko	Takemoto, Saichi
Dykes, Burke	Kano, Terumitsu	Nishi, Robert	Taketa, Haruso
Emata, Etsuko	Kawada, Hatsuye	Nishimura, Fumiko	Taniguchi, Manabu
Endo, Koisa	Kawaguchi, Hatsume	Nomaguchi, Yuzaemon	Tanino, Matsu
Feng, Yun-Loong	Kawaguchi, Mitsue	Noro, Ayako	Taverna
Fujiki, Betty	Kawahara, Seiichi	Oda, Shizuko	Terada, Allan
Fujita, John	Kayano, Yuji	Ohashi, Sumiye	Teramae, Shigeru
Fukeda, George	Kido, Miyuki	Ohtani, Hide	Teranishi, Asako
Fukuma, Sugiyo	Kimura, Haru	Okamoto, Masao	Terao, Hidetomi
Furukawa, Tomiko	Kodama, Hosoe	Okamura, Masao	Tochiura, Jane
Furumoto, Hideo	Kogita, Jay	Okawa, Kinpei	Tomita, Masako
Furuta, Mary	Kojima, Sute	Okimura, Nashiyo	Toyoji, Haruye
Hada, Stanley	Konishi, Margaret	Osaki, Torao	Toyoji, Ted
Hamada, Umeo	Konishi, Tokio	Otomaru, Takeshi	Tsubota, Cherrie
Hanada, Stanley	Konishi, Wasa	Quintua, Linda	Tsuchikawa, Chōsaburō
Harada, Tadashi	Kono, Mary	Saito, Chiyoko	Tsuye, George
Harada, Yukie	Kumata, Noboru	Sakai, Enjiro	Uchida, Masaharu
Hasegawa, Shimayo	Kumata, Sono	Sakamoto, Takashi	Uyenishi, Tazuko
Hashikuni, Osao	Kunimoto, Larry	Sakata, Dorothy	Watanabe, Arthur
Hashimoto, Tetsue	Kuramoto, Ted	Sakoda, Aiko	Wataoka, Shoji
Hayami, Smith	LaGrange, Doreen	Sasaki, Yoshitsugu	Yamada, Frank
Higashi, Roy	LaGrange, Shizuka	Scott, Masae	Yamamoto, Thomas
Hiroo, Kango	Ly, Tay	Seko, Suze	Yamashita, Masaye
Hiroo, Kiyono	Mamiya, George	Shah, Mieko	Yamauchi, Tsunehiko
Hiroo, Mickey	Maniwa, Chiyoko	Shibayama, George	Yanagimoto, Tsuruhiko
Honda, Martha	Maruoka, Chidori	Shibuya, Kikue	Yasui, Hiroshi
Hori, Toshiaki	Masunaga, Shigeo	Shigaya, Mary	Yokota, Matsuyo
Horike, Tadashi	Matsuhira, Matsuno	Shimbo, Sherlock	Yoshida, Betty
Ideta, Sadako	Matsumoto, Dairoku	Shimbo, Tokuo	Yoshida, Ineko
Ike, Joe	Mihara, Setsuye	Shimoyama, Juki	Yoshida, Miyuki
Imayanagita, Nobuko	Minato, Mary	Shinbo, Mary	Yoshida, Jitsushi
Iseri, Shima	Miyamoto, Toshimi	Shiomi, Kikuo	Yoshimoto, Richard
Ishii, Keiko	Mori, Kimiko	Shiyoyama, Kamejiro	Yoshimura, Misao
Ishii, Ray	Moriguchi, Kame	Sugita, Yasunori	Yoshino, Keith
Ishimori, Nao	Morimoto, Tadao	Sullivan, Kay	



NOVEMBER SHOTSUKI HOYO

The November Shotsuki Hoyo Memorial Service will honor the memory of those listed below who passed away in the Month of November

Abe, Ricky Kunimitsu	Iwamura, Yoshiye	Morita, Yonezo	Takano, William
Akizuki, Kikuko	Jinka, Kinuko	Mukai, Shizuko	Takao, Mineyo
Arinobu, Ginya	Jitodai, Ikuno	Muraoka, Toshie	Takashima, Hanayo
Asaba, Kei	Kajioka, Mary	Nagaye, George	Takayoshi, Raku
Asaba, Tamae	Kano, Osamu	Nakagawa, Dorothy	Takehara, Fusae
Asakura, Tomiko	Kariya, Masanobu	Nakamura, Shikajiro	Takei, Rikizo
Deguchi, Ben	Kataoka, Julie	Nakano, Hikotaro	Takemura, Mary
Deguchi, Mae	Katayama, Francis	Nakano, James	Tamura, James "Jim"
Feragen, Hisako	Katayama, Glenn	Nakano, Kazuo	Tanaka, Harue
Fifer, Kiyoe	Kato, Shizu	Nakano, Smith	Teranishi, Spencer
Fujino, Haruo	Kawaguchi, Matahei	Nakata, Gerald	Terao, Eiyu
Fujita, Kaname	Kawamura, Thomas	Nakatani, Kenny	Toyoji, Tadae
Fujita, Sachiko	Kawase, Kirino	Nakawatase, Shiwo	Toyoshima, Michiko
Fujikawa, Kazuo	Kido, Tsuya	Natsuhara, Jack	Tsuchida, Kitaro
Fujiwara, Momoe	Kitajima, Hide	Nishi, Gentaro	Tsue, Yoshio
Fujiye, Yoneko	Kitano, Hiroko	Nishimori, Tsue	Tsuji, Yasu
Fukuchi, Yoshio	Koba, Teruo	Nishizawa-Martinez, Akiko	Tsujihara, Yoshiko
Fukuda, Hatsue	Koga, Hisaye	Oba, Michiko	Tsutsumi, Kii
Furugori, Sen	Komine, Masako	Ogino, Kono	Uyeda, Aiko
Furukawa, Kazuko	Kono, Robert	Okada, Hisano	Uyeno, Lillian
Furuta, Kiwa	Kubo, Chiyeno	Okada, John	Watanabe, Atsushi
Goto, Morita	Kubota, Tadashi	Okada, Mamoru	Watanabe, Suna
Green, Leslie	Kubota, Takemitsu	Okada, Matsuno	Yakushijin, Toshiko
Hamanaka, Yone	Kumasaka, Roy	Ondo, Mae	Yamagiwa, Hidejiro
Hamasaki, Kimiye	Kuramoto, Sumi	Ono, Shigeo	Yamagiwa, Michihiko
Hasegawa, Hiroko	Kusakabe, Brian	Otsuka, Eiichi	Yamaguchi, Masao
Hayakawa, Tatsuro	Kuwahara, Akio	Rhoades, Dixie	Yamamoto, Harry
Hayashi, Kiyomi	Maruoka, Shuzo	Saito, Sutejiro	Yamamoto, Hiroshi
Higa, Hatsumi	Masumoto, Tadashi	Sakamoto, Shigeko	Yamamoto, Kimie
Higa, James	Matsuda, Esther	Sako, Masako	Yamasaki, Yasuo
Higa, Tsuyuko	Matsui, Masuko	Sakoda, Aya	Yamato, Hisataro
Higashi, Mina	Matsumoto, Benjamin	Sanada, Seiichi	Yamauchi, Howard
Hiraoka, Rose	Mayeda, Frank	Segimoto, Toshie	Yamazaki, Toshio
Horikawa, Hideyoshi	Mikami, Yoshie	Seino, Sueki	Yanagimoto, Shokichi
Hoshiba, Yasukichi	Mitoma, Mabel	Shibuya, Masanari	Yoda, Wayne
Iida, Bob	Miyauchi, Yoshiko	Shimizu, Umetaro	Yokoyama, Kazuo
Ikeda, Robert	Mizumori, Roger	Shirasago, Suna	Yokoyama, Lawrence
Ikeda, Taijiro	Mizuta, Sadano	Soejima, Roy	Yoshida, William
Imanishi, Toshiko	Mori, Harue	Sunahara, Herbert	Yoshihara, Hide
Inouye, Hisa	Morikawa, Akiye	Suto, Judy	Yoshihara, Teruo



NOVEMBER SHOTSUKI HOYO

The November Shotsuki Hoyo Memorial Service will honor the memory of those listed below who passed away in the Month of November

Iseri, Isamu

Isomura, Kiyou

Isomura, Nobuo

Isomura, Toshiko

Morimoto, Denichi

Morimoto, Nobu

Morimoto, Ruth

Morishima, Toshio

Suzuki, Yahachi

Tabusa, Matsuyo

Taguchi, Miho

Takahashi, Minosaku

Yoshinaka, Hanako

Yoshino, Lillian

Yukawa, Shizuye



HATSUMAIRI CEREMONY

Sunday, October 26, 2025

10:00 am

Hatsumairi or “First Visit” is a Jodo Shinshu tradition that acknowledges the child’s first visit to the temple. Parents present their children before the image of Amida Buddha and members of the Sangha as an expression of their gratitude and desire to expose them to the teachings of the Buddha.

The Hatsumairi Ceremony will be held in person on Sunday, October 26, 2025, at 10:00 am. Children of all ages are welcome to participate. If you would like to present your child(ren) at this ceremony, please e-mail the following information to office@seattlebetsuin.org:

- Child’s Name
- Month / Day / Year of Birth
- Parent’s Name(s)
- Mailing address
- Phone number
- E-mail Address

The deadline to register is October 19th. A Dharma School representative will contact you with details after you register. If you have any questions, please call the Temple office at (206) 329-0800. Donations made to Seattle Betsuin is greatly appreciated.

OCTOBER 2025 BETSUIN CALENDAR

Sunday	Monday	Tuesday	Wednesday	Thursday	Friday	Saturday
<div>NOVEMBER 2025 SPECIAL EVENTS</div> <div>November 2 Temple Clean-up</div> <div>November 9 Betsuin Anniversary & Eitai-kyo & Muan Hoyo service</div> <div>November 22 Connecting the World through Music Seminar with Rev. Peter Hata</div> <div>November 23 Autumn Family Music service</div>						
5 10 am SUNDAY SERVICE 10:50 am Combined Dharma Exchange and Japanese Language Service Dharma School	6 Rimban Out of Office	7 Rimban Out of Office	8 Rimban Out of Office	9 Rimban Out of Office	10 Rimban Out of Office 12 pm Gajikai meeting	11
12 10 am SUNDAY SERVICE 10:50 am Dharma Exchange Japanese Language Service Dharma School	13 Rimban Out of Office	14 Rimban Out of Office	15 Rimban Out of Office	16 Rimban Out of Office 1:30 pm Nikkei Manor Service 7 pm Betsuin Cabinet meeting	17 Rimban Out of Office	18
19 10 am SBBWA MEMORIAL SERVICE 10:50 am Dharma Exchange Japanese Language Service Dharma School	20 Rimban's day off	21 9:30 am Japanese Dharma Discussion on Zoom 6:30 pm Evening Study Session on Zoom	22 11 am Merrill Gardens Renton	23	24	25
26 10 am HATSUMAIRI - SUNDAY SERVICE 10:50 am No Dharma Exchange No Japanese Language Service Dharma School Event	27 Rimban's day off	28 9:30 am Japanese Dharma Discussion on Zoom	29	30 7 pm Betsuin Board meeting	31	
<div>To view all services, please visit http://www.youtube.com/seattlebuddhisttemple</div> <div>Please call ahead to make an appointment with the Seattle Betsuin office at 206-329-0800.</div> <div>Visits by appointment only.</div>						

Seattle Betsuin Buddhist Temple

GUEST SEMINAR SERIES



Seminar by
Rev. Peter Hata

How Astronaut and Musician Sarah Gillis Brought Together Youth Orchestras From Around the World... While in Orbit Hundreds of Miles Above the Earth

Saturday 11/22, 1:30-3pm

Seattle Betsuin Buddhist Temple, 1427 S Main Street
(Zoom and in-person)

Registration: \$10 for Temple members, \$20 for non-members

With Support from the Consulate-General of Japan in Seattle



9th *Japan Week*

@ Bellevue College

Oct. 6th - 11th (Mon - Sat) 2025



Ayame Kai Guild

HOLIDAY *Market*



10AM - 2PM

SATURDAY, NOVEMBER 15

TUKWILA COMMUNITY CENTER

Join us for a one-day-only market featuring a mix of unique Asian gifts, desserts and snacks, arts and crafts, raffle prizes, and holiday cheer. Shop local and support a great cause! Proceeds benefit Keiro Northwest's eldercare programs, Nikkei Manor assisted living and Kokoro Kai adult day center.



LEARN MORE



AYAME-KAI-MARKET.RAISELY.COM

SEATTLE BETSUIN BUDDHIST TEMPLE

ENGLISH DHARMA DIALOGUE WITH REVEREND KUSUNOKI



REGISTER HERE



Sept 16, Oct 21, Nov 18, Dec 16
(every Third Tuesday) | 6:30PM
all classes will be held online, via Zoom

Join Reverend Katsuya Kusunoki for informal evening dialogues on Buddhism. Sensei will cover topics from 'Cocktails' by Rev. Masao Kodani. There is no cost to attend. Donations are gratefully accepted.

WWW.SEATTLEBETSUIN.ORG/SEMINARS

EVERYDAY BUDDHIST:
[HTTPS://WWW.EVERYDAYBUDDHIST.ORG](https://www.everydaybuddhist.org)

BCA EVENTS Buddhist
Churches of America Buddhism
| Buddhist Churches Of
America



seattle betsuin's meditation
is on Zoom only. Email:
newsletter@
seattlebetsuin.com for the link

2025 SEATTLE BETSUIN SUNDAY SERVICES
and DX (Dharma Exchange)

Oct 5

Sunday Service
Combined Dharma Exchange
Dharma School

Oct 12

Sunday Service
Dharma Exchange
Japanese Language Service
Dharma School

Oct 19

SBWWA MEMORIAL SERVICE
Dharma Exchange
Japanese Language Service
Dharma School

Oct 26

HATSUIMAIRI - Sunday Service
No Dharma Exchange
No Japanese Language Service
Dharma School Event

DHARMA EXCHANGE
AFTER SERVICE
11:00 AM IN-PERSON

5-Minute
Dharma
Message





DIAL THE DHARMA PODCAST

Available in English | 日本語 | Español

CHANT ALONG WITH MINISTERS TO AUDIO OF SUTRA
CHANTING BY CLICKING CHANTING | BCA
(BUDDHISTCHURCHESOFAMERICA.ORG)



**PERSONAL SERVICES PERSONAL SERVICES - SEATTLE
BETSUIN BUDDHIST TEMPLE
[HTTPS://SEATTLEBETSUIN.ORG/SERVICES/](https://seattlebetsuin.org/services/) “FOR FAMILIES”
•MEMORIAL SERVICES •WEDDING CEREMONIES •HOME &
HOSPITAL VISITS •FUNERALS & PILLOW SERVICES**

**CONTACT US
SEATTLE BETSUIN
BUDDHIST TEMPLE
1427 S MAIN STREET
SEATTLE, WA 98144
PHONE: 206. 329.0800
FAX: (206) 329-3703
OFFICE @SEATTLEBETSUIN.ORG
WWW.SEATTLEBETSUIN.ORG**

**OFFICE HOURS:
Monday-Wednesday and Friday:
9:30 am - 5:30 pm.
Thursdays 9:30 am - 3:00 pm.
By appointment only due to the
reconstruction in the main
temple.
MINISTER 24 HOURS 206.329-0800
EXT. 2 REV KATSUYA KUSUNOKI,
RIMBAN**

**WHEEL OF THE SANGHA EDITORS
MIDORI TAKAGI, ENGLISH:
NEWSLETTER@
SEATTLEBETSUIN.ORG
MACHIKO WADA, JAPANESE
DEADLINE VARIES - USUALLY 4TH
MONDAY EACH MONTH AT
8:00 PM**