

Seattle Betsuin Buddhist Temple, A Shin Buddhist Temple  
Jodo Shinshu Nishi Hongwanji-ha

An online monthly newsletter of Seattle Buddhist Church

## Restoration from the fire

*By which those who have been born first guide those who come later, and those who are born later join those who were born before*

- The True Teaching, Practice, and Realization VI

Submitted by Rimban Katsuya Kusunoki

**O**n 2023 December 31<sup>st</sup>, an intruder broke into the temple and set fire to the temple's Memorial Hall basement garage. A lot of temple records and equipment stored there were burned and damaged by water and heat. Smoke damage spread all over the temple. Workers from a professional cleaning company are now cleaning the temple building. After that, we need many people's help to clean and reorganize the temple. At this point, we do not know how long it will take to restore the temple.



Photo by Seattle Betsuin Arson Restoration Project

After the fire, many people have been working in various ways. Right after the fire, many maintenance crew members and volunteers came to the temple and temporarily fixed the broken doors and windows. Some people negotiated with the insurance company. Some people, including Densho, are working to archive temple records which escaped the fire. Many people and organizations from our Sangha, BCA, our community neighbors, Canada, Japan, and other countries are making donations to restore Seattle Betsuin. White River Buddhist Temple, Tacoma Buddhist Temple, some other neighbor temples, churches, and community organizations have offered the use of their facilities. Our Gomonshu (religious leader) sent us his condolence message. Through this experience, I truly realized that Seattle Betsuin is supported by numerous people. I deeply express my appreciation

Restoration continued on p. 2...

## Gomonshu-sama shared a message

to the Seattle Betsuin Sangha regarding the recent fire:

Dear Seattle Betsuin Buddhist Temple members and friends,

Following the recent fire at Seattle Betsuin Temple, I would like to extend my heartfelt sympathy to the sangha. I was fortunate to have had a chance to visit your temple in September 2019. During my visit, I was able to see firsthand the Betsuin which you cherished as the place for sharing the Jodo Shinshu teaching, and for that I was assured as well as grateful. Therefore, it was shocking to learn that such an important place for those who embrace the Jodo Shinshu teaching became a target of arson. Not being discouraged by this hardship in addition to ongoing concerns dealing with COVID-19, I truly hope that you will continue to work together in sharing the Dharma and supporting one another as a sangha.

In gassho with warm regards,

Monshu OHTANI Kojun

Jodo Shinshu Hongwanji-ha

シアトル別院お見舞い

このたびの火災に際し、心よりお見舞い申し上げます。シアトル別院へは、2019年9月に参拝させていただきました。メンバーの皆さまが、浄土真宗のみ教えを聞き伝える場所としてのお寺を受け継がれている様子を拝見し、たいへん有り難く、また心強く思いました。私たち浄土真宗のみ教えを依りどころとする者にとって大切な場所であるお寺が放火されたことを大変悲しく思います。新型コロナウイルス感染症の影響もあるなか、さらなる困難になりますが、メンバーの皆さまが力を合わせて、引き続きお寺を守り、発展させられますことを願っております。



...**Restoration** continued from p. 1...

for all of you who support Seattle Betsuin.

After the fire, I had a chance to meet an inspector from the fire department. He said, “**Although smoke damage spread all over the temple building, the fire stayed in the basement garage. It is because dry wall was installed in the ceiling. When this building was built, fire prevention measures were properly adopted.**”

The Memorial Hall was built in 1964 to commemorate our founder, Shinran Shonin’s 700<sup>th</sup> Memorial. It has been about 60 years since it was built. If the Memorial Hall building committee thought, “Fire should not occur in a garage. It costs a lot and it is not necessary to install dry wall there,” and decided not to install it, Memorial Hall would have been burned down, and the fire would have spread to the Hondo (main hall). The fire would possibly have extended to the small parsonage and the large parsonage where we live. It is scary to think this. At the same time, my deep appreciation rises toward the Sangha who decided to install the dry wall sixty years ago. They protected our temple, the parsonages, and my family. Now when we think about the temple’s restoration, we have to seriously think about how we can also support and protect the Sangha in ten, fifty, and hundred years from today.

We just started the temple’s restoration process, and it is still in the early stage. We, as Seattle Betsuin Sangha, need to get together and discuss how we can restore our temple and what we need to do now. Let me share two things which I reflect on.

### **1. Keep holding the Nembutsu gathering.**

The temple is not available to hold a service for a while. It is not easy to find a place to get all Sangha members together. In the meantime, we can join White River and Tacoma Buddhist Temples’ Sunday Services. It is a good opportunity to meet with other Jodo Shinshu Temples’ Sangha. We can continue providing online study sessions and services. We can still schedule some small group gatherings at Densho, Wisteria Manor’s meeting rooms, etc., and hold service and study sessions. There are various ways to experience listening to the Nembutsu teaching and Buddha Dharma. We are all experiencing difficulties. Things are not going as we expect. It is Sakyamuni Buddha’s teaching. It is a precious time for us to listen to the Buddha Dharma and find a path to follow.

**2. Make the Seattle Betsuin a safer and more enjoyable place.** How do you imagine Seattle Betsuin when it reopens? What kind of place should Seattle Betsuin be after the restoration is complete? I already imagine that many Sangha members will get together at the temple and enjoy listening and sharing the Buddha Dharma with their Dharma friends at the Temple. Seattle Betsuin should be a place where people feel safe, have fun, and enjoy the Nembutsu teaching. To achieve this goal, we need to improve our temple’s security and safety. The building needs to be upgraded, rather than just repaired of the fire damage. Najjin altar has to be fully refurbished. The future Seattle Betsuin Sangha can also get together at this temple without having any worries.

It is a long process before we reopen the temple. Our temple cannot offer religious programs as we used to for a while. We will try to organize our temple services and activities as much as we can. I appreciate your patience, understanding, and support. I look forward to gathering at the temple’s Hondo again and reciting Nembutsu together.

## **Updates on the Arson at the Seattle Betsuin**

At 10:00 pm on December 31, 2023, an intruder broke into the temple and sought refuge in the basement. Shortly after, the individual committed arson, resulting in considerable fire and water damage to the basement and its surrounding areas. The smoke and water damage extended throughout the entire temple, prompting its closure to all. Efforts are underway to assess the costs of repairing the damage caused. Fortunately, no one was injured in the event. For updates on the extent of the damages as well as ways to support the temple, please visit:

[SeattleBetsuin.org/fire](https://SeattleBetsuin.org/fire)

Periodic updates on the overall damages, state of the facilities and future plans for the building will be shared on the website as well as via this newsletter.

**The Temple building and facilities remain closed to everyone at this time.**





# Dharma School News

Submitted by Joan Nakano

**H**i all! After a very difficult start to the new year for our temple, we are truly touched by the outpouring of heartfelt support from the community and sangha. We have been invited to surrounding NW District temples to continue listening to the Dharma in person or online with them on Sundays. On January 14<sup>th</sup>, White River hosted the special joint Ho'onko service. On January 21<sup>st</sup>, some of our DS sangha went to White River to celebrate their Shinnenkai New Year's with them, and others went to Tacoma and participated in their DS mochitsuki. Thank you to White River and Tacoma Buddhist Temples for inviting us and helping us feel so welcome. The DS board and teachers are working together to plan out the coming months. We look forward to seeing

our sangha in person and supporting our temple's youth group during Scout Sunday at the Nisei Veteran's Committee Memorial Hall on February 4th.

We appreciate our temple leadership and are ready to help in the restoration process of our temple home.

Gassho, Claire and Yvette

## 3/4/5 Classroom Report

Unfortunately, due to the fires, we haven't met as a class this year, but we have been able to see each other at White River and Tacoma Buddhist Temples throughout the month. We hope to see all our class students and sangha at Scout Sunday at the Nisei Veteran's Committee Memorial Hall on February 4th.

Gassho, Ilene and Yvette



Mochitsuke at Tacoma Buddhist Temple

## ON BEHALF OF THE MEMBERSHIP COMMITTEE

**W**e would like to **“thank”** the following for contributing their **2024** sustaining membership dues - the basic dues towards Temple maintenance/operations and programs (i.e. – Live Streaming of Sunday services and Special Services, seminars, and the book club).

Brandon Baysinger, Joe & Margaret Gotchy, Gary & Sandee Hamatani, Cynthia Hinds, Ellen Hoy, Craig & Dana Nakashima, Jm Norton & Kemi Nakabayashi, Roy & Kazumi Shimizu, Masaru & Anna Tahara, Kayoko Terada, Arlene Yamada

We would like to **‘WELCOME Brandon Baysinger and Ellen Hoy’** as new members of our Sangha.

(Compiled by Howard, Ilene, Joan, Pauline & Steph)

View BCA events at

[BCA Center for Buddhist Education - YouTube](#)

Hybrid BCA Eitaikyo Service on  
Sunday, February 25, 2024

## Seattle Betsuin Buddhist

### Women's Association *SBBWA's*

*Mission is to cultivate religious awareness as Jodo Shinshu Buddhist women and promote fellowship among its members; to serve and support the Seattle Betsuin, and contribute services to the welfare of the community.* Submitted by Kanako Kashima

**T**his is my last article for the SBBWA newsletter as I turn over the responsibility to one of our new co-presidents. It has been an enjoyable last 4 years of informing our Sangha the many activities we do as an organization within the body of the Seattle Betsuin Buddhist Temple. The SBBWA is a wonderful association to meet other Jodo Shinshu women. I have developed many friendships and know that I can count on the members to assist in any way to support one another, our organization, and the Temple.

The arson on the Temple has placed many of our activities on a long hold until it is restored. In the meantime, we are collaborating with White River and Tacoma temples for the services SBBWA is responsible for hosting.

The joint Ho'onko service was moved to White River Buddhist Temple, with the osonae of nigome made by Mrs. Ritsuko Kawahara. We thank all the SBBWA members who attended the service in person or via Zoom.

In collaboration with the White River Buddhist Temple, we will do a joint service for Lady Kujo and Lady Ohtani at the White River Temple Sunday, February 11, beginning at 10:30.

Our Irokai/Sokai and general membership meeting will be held at Terry's Kitchen on Sunday, February 25<sup>th</sup>. More information will be coming via a letter that will be sent out within in the next couple of weeks.

With Gassho from the Heart,  
Kanako Kashima

View past services at  
<https://youtube.com/seattlebuddhisttemple>  
Calendar: p.13 and at  
[SeattleBetsuin.com/calendar](https://SeattleBetsuin.com/calendar)

## Buddhist Book Study

**F**or Saturday, February 17<sup>th</sup>, a visit to CoLam Pagoda is being planned, once again, since the last visit did not include a tour that a few attended.

For Monday, March 18<sup>th</sup>, a visit to KankoKyo is pending, combined with, another reading of *Thus Taught Master Shichiri: One Hundred Gems of Shin Buddhist Wisdom* by Gojun Shichiri. The book is available for purchase on Amazon for \$11.99. Please plan to attend to discuss one reading of your choice. The session will take place at a place and time, yet to be determined. Email Newsletter@seattlebetsuin.com to receive updates.

On Saturday, January 13<sup>th</sup> six enjoyed a good discussion and warm hospitality at a nearby home. - IHG

## WRBT BWA Kisaragi-ki Seminar Saturday, February 10, 3:00 PM - 5:00 PM PST at White River Buddhist Temple hybrid and via Zoom



Rev. Anne Spencer of the Idaho-Oregon Buddhist Temple: **Funerals & Death Rituals As Sources of Healing After Loss**

In this interactive workshop, we will explore Buddhist perspectives on death and the rituals that surround it.

We will review evidence showing mental health benefits of death rituals, while also acknowledging the reasons why many people feel awkward or uncomfortable with funerals and memorial services. Each participant will have a chance to reflect on what funerals mean to them (the good and the bad experiences) and what they would like a service for themselves or a loved one to involve.

Please register through our website at White River Buddhist Temple [White River Buddhist Temple \(wrbt.org\)](https://WhiteRiverBuddhistTemple.wrbt.org) if you would like to attend.

A no-host dinner will follow the seminar.

Submitted by Rev. Kusunoki

All are welcome



# Musical Notes

Submitted by Kemi Nakabayashi

The afternoon New Year's Eve service at Seattle Betsuin is but a mere memory now, so rudely overshadowed by the arson fire that night and the second fire that erupted on January 2. However, the many people of all ages who attended the service, rang the bonsho, and stayed for the refreshments enjoyed a truly wonderful occasion. Thank you to Kristy Carpenter for providing the service music.



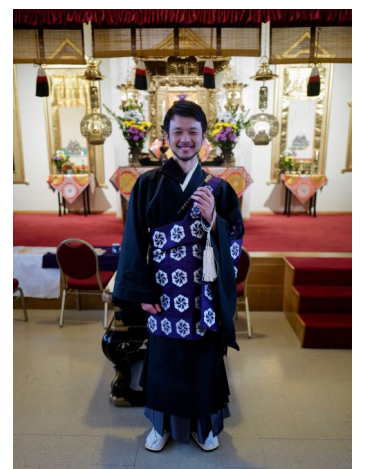
Next, we overcame the challenging weather forecast for the special Ho'onko weekend events and Sunday service on January 14, relocated to White River Buddhist Temple. How special it was for our Seattle gagaku group and Northwest District singers to still be able to convene in person and present *Shuso Sango Saho*, the Music Service version of *Shoshinge* with *Wasan* and *Nembutsu*! We are grateful for the leadership of Rev. Kusunoki, Rev. Tadao Koyama, and Rev. Yoshimichi Ouchi to enable the rest of the gagaku players to present this unique musical rendition. Although we may not be able to present musical offerings at Seattle Betsuin for a while, please consider joining other online offerings which are highlighted in the upcoming issue of the BCA Music Newsletter. Look for it on the BCA Music web page later this month. <https://www.buddhistchurchesofamerica.org/music>

Besides a feature article on Palo Alto Buddhist Temple music offerings, Sydney Shiroyama and colleagues are enlisting participants for Rhythmic Flow Taiko, an online class which begins on February 21 on Wednesday afternoons. This virtual taiko class designed to promote physical, cognitive, and social engagement for older adults. While the class was originally designed for people with Parkinson's Disease, it has proven to be fun and beneficial for a wide range of participants. No experience is necessary and participants can use materials from their home, such as a pillow for a drum surface and wooden spoons as drumsticks. The BCA Bon Odori Taiko subcommittee also has organized a webinar scheduled for Saturday morning, March 2 on Bon Daiko. A tribute to Rev. Hiroshi Abiko will be included along with the exceptional pre-

senters. Please see the fliers on page 10 to register for Rhythmic Flow taiko or the Bon Daiko webinar.

**Please plan to join the hybrid BCA Eitaikyo Service on Sunday, February 25.** In the February issue of the BCA *Wheel of Dharma*, Dennis Yamashita has written an article about Shinji Eshima. Shinji's composition "In Amida's Light" will premiere at the BCA Eitaikyo Service as a live performance by the Sacramento Betsuin Choir

Photos below are of *Music Service Shoshinge* at White River Buddhist Temple courtesy of Joe Gotchy



Rev. Kusunoki playing sho

Rev. Ouchi with ryuteki



# Pack 252 Update

Submitted by Mai Ketcherside

The Pack had the first meeting of 2024 at the Chief Seattle Council's Urban Center building on January 7<sup>th</sup>. The Council is letting us use the Urban Center until the temple reopens, and we are thankful for their generosity. Next month we're scheduled to visit a fire station, and to begin preparing for the Pinewood Derby.

Photos from the Jan 7 meeting



## A LONG NIGHT

All beings go through a long night . . . Perhaps many, many of them. A long night can be lonely and full of fears . . . or of joyous reflection. During them we may become very weary of thinking and thinking . . . wondering what to do, how to do it and so . . . or one may come to sudden decisions of happy planning. During this long night we may come to hate or love a neighbor . . . or even feel total indifference. Or we may totally misunderstand the motives of another and come to dire conclusions. Such long nights have caused wars, fears, superstitions, hatreds and myriad other problems. As well as new insights of far happier meanings.

The long night to which this M.B. lesson refers is the long night of ignorance.

It may take in one or many lives. The ignorance in this instance is the ignorance which prevents us from really knowing and appreciating the joys and sorrows of others; it is the ignorance which spreads foolish and terrifying superstitions or news data. It is the ignorance which keeps us blind to the law of cause and effect. It is the blindness which keeps us from giving our hearts to Buddha and relying upon the Teachings instead of our own ways. Ignorance is many things.

Once a Prince fell heir to a wealthy Kingdom. He desperately wanted to please one-and-all so he listened to first one proposal and then another and another. His mind became confused because many of the proposals were contradictory. Still, he kept listening until he didn't know who to believe or what to do. Now conditions began to change without the wise guidance of his Father and people began to complain, as they often will. Finally, after a long and weary night, he had the good sense to call in one of the wisest of men in his land. After hearing of the many suggestions and the confusions, the wise man asked: "Have you thought about what to do yourself? Have you really tried to learn of the best ways to proceed with your life work?"

"Well, no," answered the Prince. "I've been listening to the ideas of my people and trying to please them." Suddenly, the Prince understood that he must not go along blindly but make a true effort to know his land and to discover the best way to guide and rule his people. As well as to know himself, too. He said, "Stay here and teach me the best way to live, and think and act, Wise Man, and I will commence to use good judgement. Help me overcome my ignorance please."

G.Mc. Seattle Buddhist Church Research  
1427 So. Main St. - Seattle, WA 98144



# Joya-E/New Year's Eve Sunday Service 12Noon

December 31, 2023

Thank you, 250+, for attending!  
Happy New Year 2024!

Year end Bell Ringing

Date: Sunday, December 31<sup>st</sup>, 2023  
Time: 12:00 PM (noon\*) – 1:00 PM  
Place: Seattle Betsuin Buddhist Temple  
(Jodo Shinshu, Shin Buddhism)  
1427 South Main Street  
Seattle, WA 98144  
<https://seattlebetsuin.org/>



No registration fee is required. Donations are welcomed.

☆ Let's ring the big bell at the end of this year and welcome the New Year of 2024. Please bring your family and friends. Everyone is welcome.



## 2024 Seattle/Tacoma/White River Remembering... Joint Ho'onko Service "Our Founder Shinran Shonin's Memorial Day Observance"



### White River Buddhist Temple January 13 and 14, 2024

Seattle Betsuin, White River and Tacoma Buddhist Temples observed and celebrated Master Shinran's 760th Memorial together

- Saturday January 13 - morning workshops, dharma talk, and chanting with Rev. Katsuya Kusunoki, Seattle Betsuin Buddhist Temple; Rev. Tadao Koyama, Tacoma Buddhist Temple; Rev. Cyndi Yasaki, White River Buddhist Temple; Rev. Yoshimichi Ouchi, Toronto Buddhist Temple
- Sunday January 14 Toronto Buddhist Temple's Rev. Yoshimichi Ouchi was the guest speaker for 10:30am Ho'onko Service.

Watch this streamed, recorded Ho'onko service at [www.wrbt.org](http://www.wrbt.org) and <https://www.youtube.com/watch?v=t-qDoEV25Vc&t=2480s>



This program was made possible, in part, by a generous donation by Jim Norton & Kemi Nakabayashi. The Seattle Betsuin and Religious Department thanks you, Jim and Kemi, for your gift.

With palms together, Namo Amida Butsu....



## The Seattle Betsuin Gratefully Acknowledges the Following Donations from 2023 December - 2024 January

### Funeral / Memorial / Nokotsudo:

Miyoko Kaneta – Pillow Service	\$400.00
Masumi Simpson – Pillow Service	\$200.00
Chris Yamamoto – Burial Service	\$300.00

### Given by:

Miyoko Kaneta (estate of)
Alicia Arnold
Zach Zakahi

### In Memory of:

Reverend John Doami  
Yoshie Dodobara  
  
Katherine Fujita (January Shotsuki)  
Don Hale  
James Hasegawa  
Miyoko Kaneta  
  
Izo Kojima  
James & Betty Komura  
Taiji Morinaga (January Shotsuki)  
Ruby Nakamura

### Given by:

Koko Doami  
Mabel Nishizaki, Frances Shintaku, Masao & Frances Tamekuni, Miyoko Tazuma  
Susan Hori  
Ellen Hale  
Kathy Hasegawa  
Joseph & Margaret Gotchy, Connie Ozeki-Chinn, Dennis Shibata  
Harumi Guiberson  
Joanie Komura  
Susan Hori  
Alan Akada, Donald & Karen Akira, Lisa Butler, Joy Fujihira, Florence Fujita & Family, Ron Hamakawa, Reiko Hara, Linda Ishii, Dale & Shizue Kaku, Karen Kato, Arthur & Sally Kawaguchi, Julia Tokunaga-King, Wayne Kuramoto, Stephanie Mano, Fumi Nakamura, Joan Nakano, Colleen Nakatsu, Mabel Nishizaki, Tish Oye, Connie Ozeki-Chinn, Keri Segale, Sonoe Taketa, Masao & Frances Tamekuni, Lynda Tanagi, Miyoko Tazuma, Margaret Teramoto, Rick Yokoyama, Cindi (Kato), Kyle Yokoyama and Kelsey & Riley Allison, Ronald & Vivian Yorita  
  
Derrick & Glenda Adachi  
Derrick & Glenda Adachi  
  
Lisa Butler, Gordon Habu & Mae Yamasaki, Ellen Hale, Reiko Hara, Dale & Shizue Kaku, Mabel Nishizaki, Dennis Shibata, Frances Shintaku, Sonoe Taketa, Masaru & Anna Tahara, Miyoko Tazuma, Margaret Teramoto  
  
Harry Yoshimura

Akira Saito  
(7<sup>th</sup> yr. memorial & Jan. Shotsuki)  
Chiyoko Saito (Oct. Shotsuki)

Ted Taniguchi

Dick & Misao Yoshimura

Continued....



...**General Donations** continued

<u>Donor:</u>	<u>For:</u>
Anonymous	General Donation
Clara Beard	Temple support. Appreciation for 2023.
David Gibbs	The Zephyr Charitable Foundation
Arthur Habu & Joan Horike-Habu	General Donation
Cyrus Honmyo & May Chin-Honmyo	Boeing YourCause
Steve & Kathy Harada	General Donation
Kawabe Memorial Fund	Annual contribution
Norimi Kusunagi	General Donation
Kelly Kuwahara	Boeing YourCause
Junko Mitsunaga	General Donation
Tish Oye	End of year donation
Joe and Carolyn Schwab	General Donation
Masako Sekimoto	General Donation
Spokane Buddhist Temple	Supervisory Orei for December 2023
Yakima Buddhist Church	Supervisory Orei for 2022 & 2023

**Special Services:**

**All Sangha Memorial, Atomic Bomb Victims Memorial, Bishops/Rimbans Memorial, Eitaikyo Muen Hoyo, Gotan-e, Hanamatsuri, Nirvana Day, Spring Ohigan:** Leslie Sumida

**Bodhi Day:**

Janet Baba, Aiko Fujii, Suzanne Fujinari, Sue Fujino, Gordon Habu & Mae Yamasaki, John & Lynda Hamakami, Ron Hamakawa, Linda Hamamoto, Reiko Hara, Setsuko Harada, Jamie Huh, Loraine Jacobs, Dale & Shizue Kaku, Tetsuden and Kanako Kashima, Ann Kashiwa, Ritsuko Kawahara, Rose Kishi, Jeffrey Ko & Tina Zumoto-Ko, Wayne Kuramoto, Andrea Mano, Irene Mano, Sheri Mizumori, Ernest & Sunnie Nagai, Yoshio & Judith Nakamura, Joan Nakano, Junko Nakano, Jim Norton & Kemi Nakabayashi, Stephanie Ojima, Barry & Marlene Okada, Gregory & Ann Oxrieder, Connie Ozeki-Chinn, Irene Saito, Pauline Sakuma, Dennis Shibata, Shirley Shimada, Sato & Darlene Shimizu, Frances Shintaku, Esther Sugai, Leslie Sumida, Masaru & Anna Tahara, Sonoe Taketa, Miyoko Tazuma, Calvin & Yvette Terada, Margaret Teramoto, Nina Tomita-Kato, Rick Wong & Leanne Nishi-Wong, Akiko Yabuki, Fuyo Yoshida, Donna Zumoto, James & Tomiko Zumoto

**Fall Ohigan:**

Ron Hamakawa, Leslie Sumida

**Hoonko:**

Janet Baba, Sue Fujino, Chris Grabowski & Janice Deguchi, Gordon Habu & Mae Yamasaki, Reiko Hara, Susan Hatai, Yaeko Ito, Gail Kaminishi, Tetsuden & Kanako Kashima, Marc & Jan Keltner, Paul & Teresa Mori, Yukio & Karen Morikubo, Ernest & Sunnie Nagai, Joan Nakano, Junko Nakano, Curtis & Charlene Nakayama, Mabel Nishizaki, Henry Nose, Connie Ozeki-Chinn, John & Amy Peterson,

**Continued...**

...General Donations continued

**Hoonko:**

Gerald Quintua, Pauline Sakuma, Dennis Shibata, Roy & Kazumi Shimizu, Esther Sugai, Masaru & Anna Tahara, Sonoe Taketa, Susan Taketa, Masao & Frances Tamekuni, Kevin Tanemura, Grace Tazuma, Ronald & Suzuko Terada, Stuart Teramoto, Nina Tomita-Kato, Sam & Masako Uchida, Rick Wong & Leanne Nishi-Wong, Jeffrey & Susan Yamane, Dennis Yamashita & Elaine Aoki

**New Years Eve/Day Service:**

Anonymous (9 donations), Karita Belloni, Sandra Cross, Erika Enomoto & Mahdi Mohammadbagher, Karen Garland, Hiroko Janet Kosai, Paul & Teresa Mori, Miya (Charlotte) Ramsey, Hideo & Aiko Suganuma, Leslie Sumida, Akiko Yabuki

Additional donations will be listed in subsequent Newsletter editions.



# BCA EVENTS

## Buddhist Churches of America

[Buddhism](#) | [Buddhist Churches Of America](#)

Please visit the website for many events and details.

**2024 NEW CLASSES  
6-WEEK SESSIONS**

**RHYTHMIC FLOW  
TAIKO**

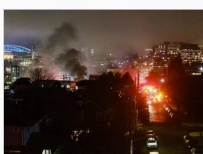
2/21, 2/28,  
3/6, 3/13,  
3/20, 3/27  
3PM-4PM  
ON ZOOM

**REGISTER NOW AT  
[WWW.RHYTHMICFLOWTAIKO.ORG](http://WWW.RHYTHMICFLOWTAIKO.ORG)**

### Recent Events



Gomonshu's New Year's Greeting



Arson Fire at Seattle Betsuin Destroys Archives; Man Arrested



Arson Restoration Fund Established

## Keeping the Beat:

A Bon Daiko Webinar Featuring Kinnara Taiko, Maui Taiko, Tiffany Tamaribuchi, and Isaku Kageyama



Tiffany Tamaribuchi



Isaku Kageyama

The "Keeping the Beat" webinar will feature a panel discussion on Bon Daiko (Obon drumming) with Kinnara Taiko, Maui Taiko, Tiffany Tamaribuchi, and Isaku Kageyama. The webinar will include a short history of Bon Daiko and a tribute to Reverend Hiroshi Abiko. Developed by the BCA Music Bon Odori/Taiko Subcommittee and co-sponsored by the Center for Buddhist Education.

**Saturday, March 2, 2024  
10:00 - 11:15 a.m. (PST)**



Kinnara Taiko



Maui Taiko



Registration: <https://bit.ly/bondaikowebinar>



### Celebrating the 125th Anniversary of the BCA



2024 marks the 125th anniversary of our founding. In gratitude of our Sangha community who embodies the mission of the BCA, we have gathered photos and memories of the many people who have shaped our organization and ensure its future.



# FEBRUARY SHOTSUKI HOYO

*The February Shotsuki Hoyo Memorial Service will honor the memory of those listed below who passed away in the month of February.*

Adachi, Hisayo	Ishigai, Midori	Nagata, Katsumi	Tanaka, Tom
Asakura, Masaaki	Ishikawa, Kevin	Nakagawa, Toshiko	Tanino, Teruyo (Terrie)
Asakura, Ryutaro	Ishikawa, Miye	Nakamichi, Katsumi	Tatemichi, Kazuto
Bacon, Douglas	Iwami, Kanichi	Nakamoto, Kiyoko	Tazuma, Elmer
Castro, Judy	Kajimura, Fugie	Nakamura, Joichi	Tazuma, Sawano
Chow, Koku-An	Kajimura, Isako	Nakamura, Sumiyo	Terada, Charles
Chun, Lee	Kakishita, Nikichi	Nakanishi, Tadashi	Terada, Hideko
Enomoto, Toshiko	Kakutani, Yu	Nakano, Hiroshi	Terada, Joseph
Enomoto, Yoshito	Kamimae, Midori	Namekata, Yune	Terao, Masaru
Fujii, Shige	Kanzaki, Tsutomu	Natsuhara, George	Tomita, Bessie
Fujimoto, Tosei	Kataoka, Tokuno	Nishimori, Kirohachi	Toshi, Chisato
Fujino, Shigenobu	Kawahara, Masako	Nishimoto, Mitsuno	Tsue, Tsunezo
Fujita, Lutes	Kawauchi, Michiko	Nitta, Nobuichi	Umeda, Kazuko
Fujita, Suzie	Kido, Momoko Morinaga	Nomura, Michiye	Uyeda, Minoru
Fujiwara, Kosao	Kihara, Tsuneko	Nomura, Mitsu	Uyeda, Tatsuo
Fukeda, Kinuyo	Kikuchi, Isamu	Nomura, Sadako	Virnig, Fujie
Fukui, Frank	Kitamura, Tadao	Nomura, Unio	Wada, Masao
Goto, Masako	Kitamura, Toichiro	Nose, Shizuko	Wada, Sachie
Hamada, Chiyo	Kiyomizu, Fuji	Oana, Thomas	Watanabe, Katsuko
Hamada, Kuniko	Kiyota, Tazō	Oita, Katashi	Watanabe, Kimie
Hamanishi, Naoe	Kojima, Izo	Omori, Mable	Watanabe, Michinosuke
Hamasaki, Glenna	Kojima, Masu	Omura, Masao	Watanabe, Suehiro
Hanada, Iwano	Kubo, Matsu	Osaki, Tom	Watanabe, Tai
Hanada, Toichi	Kubota, Chieko	Osumi, Fred	Wataoka, Akiko
Haraguchi, Shizuko	Kunihiro, Tetsuya	Parker, Edward	Yahagi, Alice
Hasegawa, Kishie	Kurata, Sumiko	Sakamoto, Masaru	Yamada, Toyo
Hasegawa, Shunji	Kurosu, Asao	Sakamoto, Miyoko	Yamagata, Kishino
Hayami, Momono	La Grange, Irl	Sako, Steve	Yamaguchi, Takeo
Hayashi, Kyoko	Le, Yuxiang	Sanbo, Akiye	Yamamoto, Chiyoko
Hikida, Fusa	Makishima, Satoyo	Sato, Toshiko	Yamamoto, Helen
Hirose, Chiyo	Mamiya, Sowa	Sawa, Koichi	Yamamoto, Masano
Hori, Lily	Mano, George	Seo, Tamio	Yamamoto, Sekiyo
Hori, Shigeichi	Maruhashi, Hisaichi	Shigaya, Mitsu	Yamamoto, Shigeiko
Horike, Kumaichi	Masuoka, Ryuei	Shimizu, Rie	Yamamoto, Shigeru
Horita, Kazuo	Matsubara, Fuyuko	Shinoki, Wayne	Yamamoto, Shio
Ichiyama, Kiji	Matsuura, Kikue	Shishido, Tsuruyo	Yamamura, Masakazu
Ikesuye, Asano	Mayeda, Kiichi	Sugitachi, Yoso	Yamane, Jun
Imamura, Harry	Miyamoto, Shizuko	Sumida, Ruth	Yamashita, Patricia
Imanishi, Edith	Mizuhata, Paul	Suwabe, Ise	Yasutake, Tom
Inoue, Takara	Mizuno, Noritoshi	Tada, Marjorie	Yatagai, Makoto
Inouye, Inouye	Mizuta, Nobuo	Takahashi, Eiko	Yokota, Kyōsuke
Inouye, Kazuko	Mukai, Noritsugu	Takamura, Jinsei	Yoshikawa, Minoru
Inouye, Keizo	Murakami, Yoshi	Takeuchi, Mitsuye	Yoshimura, Denichi
Ise, Miyoko	Muzzy, Toshiko	Tanabe, Hiroko	Yoshitomi, Itaro
Iseri, Maka	Nagai, Ukiye		Yoshitomi, Ritsuko

## MARCH SHOTSUKI HOYO

*The March Shotsuki Hoyo Memorial Service will honor the memory of those listed below who passed away in the month of March.*

Abe, Tatsu	Iwasaki, Tokusaburo	Murakami, Sachi	Suzaka, Kiyoko
Akada, Tsugi	Izumi, Hisako	Murao, Ume	Suzuki, Warren
Aoyama, Sue	Jeppesen , Kayo	Nagai, Mariko	Takano, Tsukiyo
Aoyama, Tomisaburo	Kajimura, Saburo	Nagano, Mary	Takemoto, Hisako
Araki, Masa	Kakiuchi, George	Nakagawa, Henry	Takenaga, Tomizo
Brolley, Eddie	Kamada, Toshiro	Nakagawa, Taira	Tanaka, Matsuye
Burdett, Wilson	Kamimoto, Saiichi	Nakahara, Yasuhiko	Tanaka, Nobuichi
Chen, Sou-Chia	Kanda, Ayako	Nakama, Tomiko	Taniguchi, Sam
Date, Masuyo	Kaneyasu, Toshiko	Nakamura, Barry	Taniguchi, Yumi
Deguchi, Hatsu	Kawahara, Yoshinori	Nakamura, Jiro	Tazuma, Bunshiro
Desaki, Yasuko	Kawamoto, Chiyoko	Nishikawa, Hisakazu	Teramoto, Aya
Edamura, Osa	Kawasaki, Mamoru	Nishimura, Fumi	Teraoka, Miyako
Enomoto, Edward	Kinoshita, Kiniyo	Nomura, Masu	Tomeoka, Iwao
Fujinaga, Suna	Kiyonaga, Masao	Ohara, Shio	Tsubota, Fusano
Fujita, Jayne	Kiyono, Gen	Ohashi, Matsukichi	Tsuchikawa, Masakatsu
Fujita, Katsu	Kobata, Hisashi	Ohtani, Michiye	Tsuchikawa, Wilma
Fujitomi, Yoshiye	Kobayashi, Mitoki	Oishi, Matsuo	Tsuchikawa, Wilma
Funai, John	Koda, Nobuyuki	Oiye, Shigenori	Tsue, Yone
Funai, Kimi	Kogane, Etsu	Oiye, Shizuko	Tsuye, Kikuyo
Grantham, Miles	Kubota, Thomas	Okada, Shigeko	Umemoto, Toshio
Habu, Fumiyo	Kunimoto, Shoji	Okamura, Hatsui	Uyeminami, Kikutoshi
Hamatani, Tomio	Kuranishi, Motoji	Okumura, Osamu	Uyenishi, Hiyoshi
Hanada, Hatsuji	Kusakabe, Kikuko	Okano, Tomiko	Watanabe, Hiro
Hara, Fumi	Kusakabe, Kishiko	Ondo, Tanomu	Williams, Peggy
Harada, Marji	Lee, Weng	Ozeki, Sachiko	Yamada, Michiko
Hashimoto, Sentaro	Luna, Tsuyako	Sado, Toshiko	Yamaguchi, Kanji
Higa, Teijun	Maekawa, Yuichi	Saiki, Kame	Yamamoto, Mary
Hiu-Phan, Lien	Maniwa, Shoichi	Saito, Matsuyo	Yamamoto, Ritaro
Holstram, Mary	Matsui, Aiko	Saito, Matsuyo	Yamasaki, Takeo
Horike, Haruyo	Matsuoka, Tom	Sakuma, Donald	Yanagimoto, Michiko
Hung, Su-Yun	McLeod, Hugh	Sasakura, Naho	Yasunaga, Gloria
Hyodo, Matsue	Miyake, Henry	Senba, Sadame	Yokota, William
Ichida, Kingo	Miyamoto, Mieko	Shibata, Ayako	Yonekura, Margaret
Ikeda, Yoshiaki	Mizuki, Nikki	Shibuya, Masako	Yorioka, Mitsuko
Imabori, George	Mizumori, Lillian	Shimizu, Seihachiro	Yoshijima, Takeo
Inaba, Hisako	Mori, Hideo	Shimizu, Tatsuko	Yoshimoto, Kuni
Ishida, Mikiyo	Mori, Yoshio	Shimokon, Susumu	Yoshimoto, Leslie
Ishikawa, Richard	Morimoto, Hisa	Shitamae, Moto	Yoshino, Akira
Isomura, Yoko	Morimoto, Takeji	Soejima, Somo	Yoshitake, Tomika
Isomura, Yoshiaki	Murakami, Ishi	Sugiyama, Sansaku	
Ito, Tsutomu		Sumida, Yoshiko	



# February 2024 Seattle Betsuin Schedule

	Sunday	Monday	Tuesday	Wednesday	Thursday	Friday	Saturday
	<b>MARCH 2024 SPECIAL EVENTS</b> March 23 Japanese Ohigan Seminar at Densho March 24 Spring Ohigan Service at Tacoma (Bishop Toshiyuki Umitani, Honpa Hongwanji Mission of Hawaii)						
4		5 Rimban's day off	6 9:30 am Japanese Dharma Discussion on Zoom	7 Rimban's day off	8 1:30 pm Nikkei Manor Service	9 11 am Gojikai (Zoom)	10
10 am	SCOUT SUNDAY SERVICE at NVC Hall						
11		12 Rimban's day off	13 9:30 am Japanese Dharma Discussion on Zoom	14 Rimban's day off	15	16	17
10 am	ADULT SUNDAY SERVICE At Densho (limited seating available)						
10:30 am	LADY KUJO & LADY OHTANI MEMORIAL SERVICE at White River Buddhist Temple English Dharma Talk (Rev Anne Spencer, IOBT)		6:30 pm Evening Study Session on Zoom		1:30 pm Nikkei Manor Service		3 pm Gagaku Practice
18		19 PRESIDENTS' DAY Office Closed	20 9:30 am Japanese Dharma Discussion on Zoom	21	22	23	24
10 am	ADULT SUNDAY SERVICE At Densho (limited seating available)						
11 am	Betsuin Annual General Meeting on Zoom						
		8 pm Newsletter deadline					
25		26 Rimban's day off	27 9:30 am Japanese Dharma Discussion on Zoom	28 11 am Merrill Gardens Rimban's day off	29		
10 am	VIRTUAL BCA EITAIKYO SUNDAY SERVICE						

Seattle Buddhist Church  
1427 S Main Street  
Seattle, WA 98144

2024 February  
*Wheel of the Sangha*  
A Monthly Newsletter of  
Seattle Buddhist Church

EVERYDAY BUDDHIST:  
HTTPS://  
WWW.EVERYDAYBUDDHIST.  
ORG

View Sunday services virtually and  
Dharma Talks any time on  
<https://youtube.com/seattlebuddhisttemple>

Calendar: p.13 and at [SeattleBetsuin.com/calendar](http://SeattleBetsuin.com/calendar)

Receive a digital copy of Seattle Betsuin **Monthly  
Newsletter: SBBT Monthly Newsletter**

Receive **Weekly E-Newsletter** and  
**Share our e-news with your friends and  
family by sharing this sign up link**

## Weekly Services and Study Sessions are Suspended Until Further Notice

Rev. Kusunoki's evening study sessions and weekly services will be on hold while the temple board assesses the damage and safety of the building. Check back with this newsletter or at [SeattleBetsuin.org](http://SeattleBetsuin.org) for continued updates. See calendar p. 13 for Sunday service offerings and locations.

Chant along with ministers to audio of sutra chanting by clicking [Chanting | BCA](http://Chanting|BCA(buddhistchurchesofamerica.org))  
([buddhistchurchesofamerica.org](http://buddhistchurchesofamerica.org))

Seattle Betsuin's **BOOK STUDY** Group will meet in person on Saturday,  
February 17, 2024, time and place to be determined. See p. 4 for book info.

## 2024 RELIGIOUS SERVICES Sundays

9:00AM Meditation, via Zoom only

### SEATTLE BETSUIN SERVICES

**February 4 Scout Sunday, In-Person**  
10:00AM at Nisei Vets Hall, Seattle

**February 11 10:00AM in-person at  
Densho** (seating limited)

- **Lady Kujo/Lady Ohtani Memorial**  
10:30AM at **White River Temple**;  
Rev Anne Spencer - Dharma Talk

**February 18 10:00AM at Densho**

- **11:00AM Betsuin General Meeting/Zoom**

### BCA SUNDAY SERVICE

**February 25 10:00AM Eitaikyo Virtual**

See Calendar p. 13

**Dharma Exchange  
Sundays after Service  
11:00AM in-person  
at the Main Hall  
Personal Services**



Personal Services - Seattle  
[SeattleBetsuin.org](http://SeattleBetsuin.org) "For  
Families"

- Memorial Services
- Wedding Ceremonies
- Home & Hospital Visits
- Funerals & Pillow Services

## Contact Us

Seattle Betsuin  
Buddhist Temple  
1427 S Main Street  
Seattle, WA 98144

Phone: 206.329.0800  
Fax: (206) 329-3703  
office @SeattleBetsuin.org  
[www.SeattleBetsuin.org](http://www.SeattleBetsuin.org)

**Office Hours:**  
10:00AM-3:00PM  
Call for recorded  
updates and for  
emergencies

Minister 24 hours  
206.779.2214

NEWSLETTER  
DEADLINE:  
Feb 19, 2024  
8:00 PM\*

*Wheel of the Sangha* Editors  
Irene Goto, English: [newsletter@seattlebetsuin.org](mailto:newsletter@seattlebetsuin.org)  
Machiko Wada, Japanese  
\*Deadline varies - usually 4th Monday each month at  
8:00 PM