

“Peace and No War”

Submitted by Rimban Katsuya Kusunoki

United Nations sets “International Day of Peace” on September 21st. Hawaii Kyodan (Honpa Hongwanji Mission of Hawaii) organizes Peace Event “Ring your Bell for Peace Day” annually on September 21. Connor, my wife Ayano, and I have participated in the event since 2020. In this event, people wish for peace by ringing their bell for five minutes. I also rang Seattle Betsuin’s Bonsho bell (big bell). Through this event, I wished that each one of us light a torch of peace in our hearts and spread the torch all over the World. In 2023, let’s join this peace event and ring our peace bell together!

War in Ukraine is still going on. It seems that many countries increase their defense cost and prepare for war. I am afraid of a nuclear weapon being used. I am anxious about the future. I wish for peace and no war in this world. I disagree with any kind of war. Once a war breaks out, many people are killed. When many people die, more people lament. The sadness easily turns into anger. Even when a war comes to an end, the sadness and anger remain in human’s heart and mind. These may cause other fighting in the future. We have to find the way to break the chain of war and revenge.

When a war breaks out, people take weapons in their hands and fight. Instead of taking weapons, let’s put our hands together and *gassho*. When we do so, we cannot hold a weapon. Instead of saying words to pour out our anger and hatred, let’s say, “Thank you”. When we thank each other, anger and hatred are gone somewhere. When our hearts and minds are filled with anger and hatred, we can only think of ourselves and our rights. We only have self-centered minds, and compassion disappears from our hearts. When our heart and mind is filled with “Thank you” and compassion, we can think about other people’s happiness. We try to understand other people’s pain. When each one of us has compassion, we don’t have to take weapons and fight.

In the Larger Sutra, there is a passage that tells us an aspect of a world that is guided by Buddha. It is one of most important teaching to me.



Rimban Kusunoki on October 16, 2022 on Four Rules for Living in This World.

Join Seattle Betsuin's Virtual Groups:

Dharma Exchange, Book Study (p.6) and Sutra & Dialogue have resumed; Meditation continues each Sunday 9AM.

To join these groups, e-mail for Links: webmaster@seattlebetsuin.com or newsletter@seattlebetsuin.org specify the group in the subject line

November SCHEDULE

Sunday Services: streamed and in-person 10:00AM; **Wednesdays** 10:00AM: chanting and dialogue in-person; Shotsuki/Joint Memorial Hoyo will take place **Wednesday, November 2, 10:00AM**

View services virtually any time on <https://youtube.com/seattlebuddhisttemple>

Calendar: p.13 and at SeattleBetsuin.com/calendar

Receive a digital copy of Seattle Betsuin **Monthly Newsletter** - leave your email at this link:

[SBBT Monthly Newsletter](#)

Receive Weekly Newsletter: Share our e-news with your friends and family by sharing [this sign up link](#)

continued on p. 2...

...**Peace and No War...** continued from p. 1

Peace and *Peace and harmony reign throughout the land.*

The sun and moon shine brightly.

The wind and rain are timely.

No disaster or disease ever occurs.

The land is prosperous.

People live in peace.

There is no need to use soldiers and weapons.

People respect virtue.

People cultivate benevolence.

People diligently observe propriety and humility.

We may think we do not have any power to stop natural disaster. But if we refrain from pursuing only our benefit, avoid acting selfishly, and consider other people and nature more, some natural disasters might not happen. We may be able to stop or slow down global warming. Some epidemics might not spread widely if we behave kindly and unselfishly. Even when we encounter some difficult situations, such as natural disasters or epidemics, it is important not to lose compassion in our hearts. Then we can help each other to overcome difficult situations.

Anger, hatred, and complaining rise one after another in our heart and mind spontaneously. Kindness and compassion are different and not easy to hold in our heart and mind. It is human nature. We need to practice holding kindness and compassion within us. We can begin with putting our hands together and saying kind words. We cultivate compassion in our hearts and share it with others. Our World becomes peaceful when everyone has compassion. Shinran Shonin says in his letter, "May there be peace in the World, and may the Buddha's teaching spread!" I keep Shinran Shonin's words in my heart, put my hands together, and recite the sacred name of infinite wisdom and compassion, *Namoamidabutsu*.

Gassho,



DIAL THE DHARMA

Call the toll free number - 800-817-7918 to hear Bishop Harada's message

Push "1" for English and "2" for Japanese

Shōtsuki Hōyo Memorial

(monthly memorial service sponsored by the temple) will

be observed in-person

Wednesday, November 2, 2022

at 10:00AM.

The names of those loved-ones who will be remembered are listed on p. 11.

Seattle Betsuin Buddhist Temple Lecture

"Discovering Pure Land Sutra"

by Rev. Rosalie May



Wednesday

November 9, 2022

7:00PM PST

[https://us02web.zoom.us/
meeting/register/](https://us02web.zoom.us/j/8125451234)

tZlSceirrDgqH9bPGzbNCtt-
k6zlwDC3MyDlt

or visit SeattleBetsuin.org/seminars

Submitted by Irene Goto



Musical Notes by Kemi Nakabayashi

With cautious excitement and sincere appreciation for the help and participation of others, we plan special musical offerings for upcoming services in November and December. After the recent first in-person children's service in the gym on October 30 since prior to the pandemic, we hope to expand the in-temple participation of youth musicians at the **Autumn Music Service on Sunday, November 27**. Thank you to Ann Ishimaru, Zack Semke, and Erin Taylor for assisting to coordinate the music for the children's service. Please mark your calendars for the Music Service to join us on Thanksgiving weekend Sunday in the temple or online. If you are viewing online or watch the archived service later on, a video recording prepared with Courtney Kuroda and Jim Norton will be included.

Special musical offerings are also planned for the Eitaikyo/Betsuin Anniversary service on November 13 and for Bodhi Day Sunday service on December 4.



Seattle Betsuin Buddhist Women's Association ...

SBBWA's Mission is to cultivate religious awareness as Jodo Shinshu Buddhist women and promote fellowship among its members; to serve and support the Seattle Betsuin, and contribute services to the welfare of the community.

On behalf of the Obachan's Closet Team, we'd like to thank our members in SBBWA and temple members for your generous donations of precious items and your precious time. It's always amazing how much support our members give towards the success of temple sponsored events. The pricers, the volunteers the day of the event, the bakers, our security team and the cleaning crew; all key towards making Obachan's Closet a success. - Nina A Huge Thank you to our whole village!

We had so many beautiful donations of dishware, kimonos and accessories, artwork, kitchen ware, purses & bags, hachimaki, tenugui, furoshiki, etc. etc.! Volunteers worked hours and hours, pric-



tsukemono



ing, planning, baking, making tsukemono, sorting and carrying items up and down the stairs, arranging, and of course, coming on Saturday to help.

And as a village, it was nice to have the others join us for selling T-shirts (Obon committee), popcorn (Scouts), and providing people an opportunity to adopt Obutsudans (temple).

We made about over \$8000 which will go to subsidize members' registration for conference fees (World Buddhist Women's Convention is in 2023), as well as other organizations.

During this busy time, we also helped with the Salmon Obento prep on Friday, made Ohagi for ohigan service, and organized the Eshinni-ko/Kakushinni-ko Memorial Service.

Submitted by Janie Okawa



Nina, Ayano, Ron



Opening Rush of Bachan's Closet



Marlene, Darlene, Ritsuko, Kanako, Suzanne



Sanaye Janet



Betsuin Tea Talk “Temple News”

by Leanne Nishi-Wong



“Okagesama de” — *Thanks to You*

The month of November includes a holiday of gratitude and reflection. Thank-giving originated as a celebration of the harvest and recognition for the past year’s blessings. Upon reflection of the Betsuin’s endeavors for the past year; the whirlwind of activity regarding the re-opening of temple facilities, and welcoming everyone back in person, it is surprising that 2022 is coming to an end.

In March of this year, BCA elected a new President, Terri Omori. Terri is the first woman President in the history of the organization’s 123 years of existence. Then, in April of this year, Terri published an article that resonated with me. I especially found comfort in the following statement.

“It is Now My Turn” - excerpt from an article by Terri Omori (BCA President), dated April 10, 2022 – BCA Website—Gratitude, “I humbly accepted this opportunity out of gratitude to many who made sacrifices to establish Jodo Shinshu in the United States, to the countless others for their dedication and commitment to BCA for the past 123 years, to the current BCA ministers and leaders for their efforts in sharing the Dharma and sustainability of their churches/temples, and to my parents for laying a spiritual foundation, rich in tradition, that is a part of my everyday living.

This feeling of deep gratitude led to an attitude of, ‘It is now my turn.’ It is my turn to step up in honor of all those before me to continue their vision of having Jodo Shinshu Buddhism in America and to join BCA leaders who are also stepping up at their churches/temples, at the district level, and at the BCA level.”

The feeling of gratitude Terri described in her article is something that I am reminded of everyday. Personally, I am grateful for each one of you, your continued support to the Seattle Betsuin, and its mission to continue Shinran Shonin’s teachings. As this year comes to a close, I ask you to please reflect on your connection to the Seattle Betsuin and your “it is now my turn” moment.

In Gassho,
Leanne
chairperson@seattlebetsuin.org



SALMON DINNER

FUNDRASIER

The Seattle Betsuin held its Salmon Dinner fundraiser on September 24, 2022. We hope those who participated enjoyed the meal after an absence of 3 years. It was a drive-thru event this year due to Covid-19 concerns and we hope to have back in-person next year.

The event was organized after multiple meetings by the committee comprised of Ron Hamakawa, Marie Kosai-Luke, Joan Nakano, Steph Ojima, Susie Taketa and Howard Luke. It was a successful event; during the 4-hour pickup period over 800 meals were served.

A special thank you to a local farm in Kent that donated the fresh corn for our event. They have a large roadside stand that is open most of the year offering fruits, vegetables, plants, holiday items, etc. The corn was recently harvested so perfect timing for the event. It is the support of the businesses in the community that contribute to the success of events by the Temple and is very much appreciated.



Photo courtesy of Kathy Hasegawa

It would not be possible without the contributions of the volunteers who help put on the event.

Thanks to:

Baba, Janet; Eng, Joann Kosai -;
Florence, Gwen;
Fujinari, Suzanne;

Hamakawa, Ron; Hoshino, Alan; Kashima, Kanako; Kato, Gary; Kato, Madeline; Kato, Nina Tomita -; Kawahara, Ileene; Keltner, Jan Nakamura -; Keltner, Marc; Ko, Tina Zumoto -; Kogita, Greg; Kogita, Miyoko (Mimi); Kozai, Lori; Kusunoki, Ayano; Lee, David; Lee, Dianne Kosai -; Luke, Howard; Luke, Marie Kosai -; Matsuda, Bryce; McKinney, Connor; Melake, Semare; Mensalvas, Mark; Moriguchi, Tyler; Nakano, Joan; Nakashima, Craig; Ojima, Steph; Okawa, Janie; O’Shields, Dean; Sakamoto, Alex; Shibata, Debbie; Shibata, Dennis; Shibata, Gary; Suzaka, Gail; Taketa, Susie; Tanabe, Corri; Tazuma, Grace; Terada, Calvin; Tosaya, Brandt; Tosaya, Julianne; Tsang, Brent; Tsang, Kiana; Wong, Leanne Nishi -; Wong, Rick; Yamane, Jeff; Yamane, Susie; Yamasaki, Mae; Zumoto, Tomi.



Dharma School News

Submitted by Joan Nakano

Our sangha welcomed two Hatsumairi Ceremony participants in person this fall. Children were presented their nenjus, Chokyo (Receiving of the Dharma), certificates, and parents recited the pledge.



Rimban Kusunoki with Hatsumairi families

Our infant/toddler - high school dharma school classes are now all in person, and we are off to a wonderful start to our year. During the pandemic, a new trunk or treat tradition started and is scheduled for October 30. Pictures will be included in the next newsletter.

Classroom Reports

The 1st/2nd/3rd grade class learned about the significance of the onenju. The students strung beads to make their own onenjus, including alphabet beads to spell their names. Following the first day of Dharma School discussion about classroom and temple etiquette, they completed a booklet "How to Treat Others with Respect." To celebrate Fall Ohigan, the students learned the significance of this special Buddhist holiday. They also weaved a fall leaf and "made" Ohagi using modeling clay. Continuing with their lesson about the Onenju, the students listened to a story about Oliver the Onenju whose owner consistently misplaced him; making it so that Oliver was not able to attend temple on a regular basis. The students made a Onenju holder so that they can put their Onenju on this holder as soon as they come home from temple. This way they will not misplace their Onenju like Oliver's owner did. The students did a review of various Buddhist words and things they learned during the past year. They completed a Word Search where they found these words in a puzzle. Finally, they made an onenju case that they can bring to temple each week.

Our 4th and 5th grade class had a busy October. We made bookmarks while learning more about Eshinni and Kakushinni after their special service.

Sensei Irene took us to the meditation house to dust and view the obutsudans which are up for adoption. We even witnessed one that found a new home that day! Rimban Kusunoki came to our class to teach us how to write Namu Amida Butsu with a brush and ink (Shodo-Japanese calligraphy). We will soon be making our own small obutsudans that we can keep in our rooms and are looking forward to Trunk or Treating at the temple the following week and look forward to a new year of learning and sharing the Dharma.

Our returning students, most who met each other on Zoom last year are now 4th and 5th graders! We got to know each other better (in-person) by playing BINGO after talking a bit about our summers and returning to school. Students were introduced to the reading of the year, "Our Pledge," which we will recite when we close class with gassho. It was fun to



4th/5th grade students displaying calligraphy with teachers and Rimban

spending the following Sunday with the families of our students and we look forward to getting to know everybody better as the year progresses.

Ochigo -submitted by Katherine Brownlee

Ochigo procession will take place on Nov. 13th at the Eitaikyo Service. It is open to children who are in kindergarten and under. Participants are expected to arrive at the temple at 8:30am to change into attire. At 9:30am, photos will be taken and Ochigo procession will begin at 10am. Please RSVP to Ayano or Katherine.

View BCA events at
[BCA Center for Buddhist Education - YouTube](#)

ON BEHALF OF THE MEMBERSHIP COMMITTEE

We would like to “**thank**” the following for contributing their **2022** sustaining membership dues - the basic dues towards Temple maintenance/operations (i.repairs/remodel of the Memorial Hall, upcoming fixing of the roof) and operations and programs (i.e. – Live Streaming of Sunday services and Special Services (i.e. All Sangha Memorial); Dharma School classes; seminars). The minimum for individual membership is \$400 (for under 70 years of age), \$350 (for 70 years of age and over), and \$200 (for those under 30 years of age). Installment payments can be made.

Yuki Arinobu, Alexander Bertelsen, Leonora Clark, Florence Fujita, David Gibbs & Tara Tamaribuchi, John & Lynda Hamakami, Paul Harada & Dr. Michelle Nishina, Kathy Hasegawa, Steve Hasegawa, Cyrus Honmyo & May Chin-, Mary Katayama, Richard Kawaguchi, Rob & Mai Ketcherside, Matt & Rosalie May, Connor McKinney, Lynn Miyauchi, Fumiko Nakamura, Kengo Sakamoto, Gary & Debbie Shibata, Leslie Sumida, Gail Suzaka, Michael & Gayle Teramoto, Paul & Mabel Tomita, Michiko Toyoshima, Dr. Ken Yocom & Anna Tamura, Mark Yuasa, Donna Zumoto.

We’d like to ‘**Welcome**’ as a new member of our Sangha **Alexander Bertelsen**

(Compiled by Howard, Ileene, Joan, Pauline & Steph)

Online Membership Form

Betsuin Buddhist Book

Group will meet via Zoom on Saturday, November 19 at 9:30AM. We will discuss Chapter 4, *Shin Buddhism (Part One)* by Daisetz T. Suzuki, from *Living in Amida’s Universal Vow* edited by Alfred Bloom. Our small group and insight by Rev. Don Castro contribute to varied perspectives and understanding. Please join us; email Newsletter@SeattleBetsuin.org for the Zoom link.

Submitted by Irene Goto

Troop 252 camped at the North Bend property in October. They enjoyed the warm fall weather and swimming in the river. They made tin foil dinners, smores, and omelets in a bag for breakfast. 252 is working hard towards rank advancements and the fitness merit badge. Anyone interested in joining Troop 252, contact the office at office@seattlebetsuin.org



Submitted by Ileene Tanabe

Jr. YBA —Junior Young Buddhist Association

On Sunday, October 16, Jr. YBA held their first meeting of the Dharma School year! At the meeting we introduced the 2022-23 board members.

We also assembled candy bags to prepare for the Halloween trunk or treat activity for our younger Dharma School members. This November, Jr. YBA plans on holding a food and clothing drive for students and families at Bailey Gatzert Elementary



School. Donated items will include pantry items, socks, sweatpants, and coats.

We have an enthusiastic and proactive group of Jr. YBA members who are ready to serve our sangha and community!

Our next meeting will be held on November 14, 2022. Submitted by Kaya T.

BCA's Music YouTube Channel's Latest Features!

GAGAKU

Gagaku, the oldest orchestral tradition in the world, is imperial Japanese court music performed for special services in Shinto and Buddhist temples. Gagaku was introduced into Japan along with Buddhism around 600-700 ACE from China and Korea. Incorporated into Shin Buddhist liturgy in the 17th century, gagaku is used in processional music and in some formal chants.

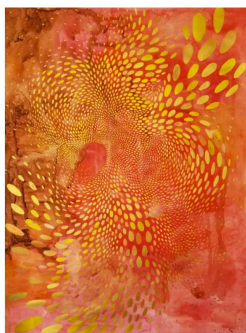


A dharma message by Rev. Katsuya Kusunoki with more information on gagaku is available here: [Music in the Pure Land | BCA \(buddhistchurchesofamerica.org\)](https://www.buddhistchurchesofamerica.org) - scroll down to "Gagaku" and hit "Music in the Pure Land Button". Submitted by Irene Goto

2nd Annual BCA Virtual ART EXHIBIT

BCA Art Exhibit 2022

Source: [BCA Art Exhibit 2022 | BCA \(buddhistchurchesofamerica.org\)](https://www.buddhistchurchesofamerica.org)



Joyce Aki Nojima - Enmanji Buddhist Temple joycenojima.com, joynojima.com
Artist Statement: *This is my attempt in making a small visual escape. I play and swirl my marks in hope of creating an experience.*

An experience where one may become lost in the looking while drowning out the noise of reality. -IG

[Wheel of Dharma Monthly | BCA \(buddhistchurchesofamerica.org\)](https://www.buddhistchurchesofamerica.org)

Seattle Betsuin Autumn Speaker Series

Explore Buddhist concepts and topics with our excellent teachers from the Northwest District! Sign up for the series today to reserve your spot



Rev. Tadao Koyama
Tacoma Buddhist Temple
Tuesday, October 18th



Rev. Rosalie May
Seattle Betsuin
Wednesday, November 9th



Small Brown Banner Text

You can register for this series or learn more by visiting: seattlebetsuin.org/seminars



Zoom Registration

<https://us02web.zoom.us/join/register/tZlscerrDgqH9bPGzbNCtk6zIwDC3MyDit>

Seattle Betsuin Updates!

- **All services and events: Masks, vaccinations, and social distance are encouraged. To encourage mask wearing, refreshments will not be available indoors at this time.**
- **Sunday Dharma Exchange takes place in-person in the dining room at 11:00AM and Wednesday Sutra Chanting and Dialogue in-person has returned at 10:00AM—in November on dates 2, 9, and 30, 2022 .**
- **Shotsuki Hoyo (Monthly Memorial) takes place on Wednesday, November 2, at 10AM in-person. See p. 11 for Shotsuki list. Live-streaming will return in the future with upgrades in technology.**



The Seattle Betsuin Gratefully Acknowledges The Following Donations September - October, 2022

Funeral / Memorial / Nokotsudo:

Given by:

Richard Tetsuo Doi – In Memory of	\$ 100.00	Alice Doi
Gladys & Grace Hamano – In Memory of	\$ 100.00	Katherine Kato
Masao Koba – Memorial Service	\$ 300.00	Estate of Masao Koba
Allan Terada – In Memory of	\$ 300.00	Kayoko Terada
Tetsu Yasuda – In Memory of	\$ 200.00	Mark Yasuda

In Memory of:

Given by:

Fumio Hamakawa	Connie Ozeki-Chinn
Emiko Hamakawa	Connie Ozeki-Chinn
Satoru Ichikawa	Midori & Leslie Sumida, Chiye Kusakabe, Pauline Sakuma, Sue Fujino, Joseph & Lora Wahl
Rev. Tatsuya Ichikawa	Joseph & Lora Wahl
Mrs. Tatsuya Ichikawa	Joseph & Lora Wahl
Iso Nishimura	Sato & Darlene Shimizu

Temple Supervision: White River Buddhist Temple - \$ 300.00

General Donations:

Donor:

For:

Suzanne Fujinari	Book and appreciation for Rimban Kusunoki
Akiko Hayashida	Appreciation for Japanese Dharma Discussion
Loren Nishimura	General Donation
Akiko Payne	Appreciation for Japanese Dharma Discussion
Shigeyuki & Misato Sakuma	Appreciation for café opening dedication
Linda Shimizu	General Donation
Michael & Gayle Teramoto	General Donation

continued on p. 10....

...Donations continued from p.10

Michiko Toyoshima	General Donation
Dean O'Shields	Appreciation for Adoption of Butsudan
Cyrus Homyo & May Chin-	Boeing Employees YourCause
Kelly Kuwahara	Boeing Employees YourCause

Salmon Dinner: Midori & Lance Akagi and Mickey & Laura Woo, Joyce Aoyama, Clara Beard, Tracy Bjerkeset, Linda Carrig, Steve & Lori Chisholm, Robert Dunn, Gwen Florence, Robert Fong, Joy Fujihara, Aiko Fujii, Sue Fujino, Arthur & Joan Habu, Gordon Habu & Mae Yamasaki, Ron Hamakawa, Peggy Hanada, Terry Hansen, Kathy Hasegawa, Cynthia Hinds, David Ichikawa, Kyle Ichikawa, Taijo Imanaka, John & Crystal Inge, Loraine Jacobs, Gail Kaminishi, Tetsuden & Kanako Kashima, Ann Kashiwa, Marcia Kato, Arthur & Sally Kawaguchi, Ritsuko Kawahara, Masako Kawamoto, Gary & Connie Kobata, Paul Kogita, June Kubo, Wayne Kuramoto, Sherry Luke, Stephanie Mano, Lori Matsumura, Sheri Mizumori, Purvi Mody, Pat Nakamura, Charles Natsuhara, Nadine Nishimura, JoAnn Okada, Gregory & Ann Oxrieder, Dana Pietromonaco, Gerald Quintua, Miya Ramsey, Anita Rodgers, Gary & Deborah Shibata, Steven Shigaya, Shirley Shimada, Ben & Etsu Shimbo, Steve Shinoda, Kristine Simons, Leslie Sumida, Stuart Teramoto, Ruth Terry, Sam & Masako Uchida, Sam Umeda, Susanne Umeda, Doug Uyeda, Machiko Wada, Henry & Christy Watanabe, Kate Wehr, Robert Weinsheimer & Kari Palmer, Steve Woo, Steve & Valerie Yamasaki, Dennis Yamashita & Elaine Aoki, Kevin & Kari Ann Yokoyama, Jeremy Zimmerman, James & Tomiko Zumoto

Special Services:

Hatsubon/Obon: Hideo & Joyce Kawahara

Fall Ohigan: Janet Baba, Connie Ozeki-Chinn, Kenny & Yoshie Dodobara, Aiko Fujii, Sue Fujino, Irene Goto, Gordon Habu & Mae Yamasaki, Ron Hamakawa, Yoko Hamanaka, Peggy Hanada, Reiko Hara, Setsuko Harada, Michiko Hirata, Jamie Huh, Dale & Shizue Kaku, Malcolm & Eileen Kanemoto, Tetsuden & Kanako Kashima, Ann Kashiwa, Nina Tomita-Kato, Ritsuko Kawahara, Masako Kawamoto, Marc & Janice Keltner, Jeffrey Ko & Tina Zumoto-Ko, Art & Lori Kozai, Lisa Kumasaka, Carolyn Kunihiro, Wayne Kuramoto, Kinue Kuwahara, Andrea Mano, Irene Mano, Hugh Matsubayashi, Sheri Mizumori, Paul & Teresa Mori, Yukio & Karen Morikubo, Ernest & Sanaye Nagai, Yoshio & Judith Nakamura, Kiyoko Nakanishi, Joan Nakano, Junko Nakano, Mabel Nishizaki, Jim Norton & Kemi Nakabayashi, Barry & Marlene Okada, Troy Parke & Mayumi Terada, Gerald Quintua, Pauline Sakuma, Robert Seko, Dennis Shibata, Roy & Kazumi Shimizu, Sato & Darlene Shimizu, Esther Sugai, Aiko Sukanuma, Gail Suzaka, Masaru & Anna Tahara, Kiyoko Takashima, Yoshiaki & Naomi Takemura, Sonoe Taketa, Susan Taketa, Masao & Frances Tamekuni, Ileene Kawahara-Tanabe, Kevin Tanemura, Peggy Tanemura, Miyoko Tazuma, Ronald & Suzuko Terada, Stuart Teramoto, Sam & Masako Uchida, Tazuko Uyenishi, Machiko Wada, Henry & Christy Watanabe, Rick Wong & Leanne Nishi-Wong, Akiko Yabuki, Dennis Yamashita & Elaine Aoki, Yoko Yanari, Kevin & Kari Ann Yokoyama, Fuyo Yoshida, James & Tomiko Zumoto.

Additional donations will be listed in subsequent Newsletter editions



NOVEMBER SHOTSUKI HOYO

The November Shotsuki Hoyo Memorial Service will honor the memory of those listed below who passed away in the month of November. This service will be combined with the Joint Memorial Service on Wednesday, November 2, at 10 AM and will take place in-person at Seattle Betsuin guided by COVID safety protocols.

Abe, Ricky Kunimitsu	Iwamura, Yoshiye	Morishima, Toshio	Takahashi, Minosaku
Akizuki, Kikuko	Jinka, Kinuko	Morita, Yonezo	Takano, William
Arinobu, Ginya	Jitodai, Ikuno	Mukai, Shizuko	Takao, Mineyo
Asaba, Kei	Kajioka, Mary	Muraoka, Toshie	Takashima, Hanayo
Asaba, Tamae	Kano, Osamu	Nagaye, George	Takayoshi, Raku
Asakura, Tomiko	Kariya, Masanobu	Nakagawa, Dorothy	Takehara, Fusae
Deguchi, Ben	Kataoka, Julie	Nakamura, Shikajiro	Takei, Rikizo
Deguchi, Mae	Katayama, Francis	Nakano, Hikotaro	Takemura, Mary
Feragen, Hisako	Katayama, Glenn	Nakano, James	Tamura, James "Jim"
Fifer, Kiyoe	Kato, Shizu	Nakano, Kazuo	Tanaka, Harue
Fujino, Haruo	Kawaguchi, Matahei	Nakano, Smith	Teranishi, Spencer
Fujita, Kaname	Kawamura, Thomas	Nakata, Gerald	Terao, Eiyu
Fujita, Sachiko	Kawase, Kirino	Nakatani, Kenny	Toyaji, Tadae
Fujiwara, Momoe	Kido, Tsuya	Nakawatase, Shiwo	Tsuchida, Kitaro
Fujiye, Yoneko	Kitajima, Hide	Natsuhara, Jack	Tsue, Yoshio
Fukuchi, Yoshio	Kitano, Hiroko	Nishi, Gentaro	Tsuji, Yasu
Fukuda, Hatsue	Koba, Teruo	Nishimori, Tsue	Tsujihara, Yoshiko
Furugori, Sen	Koga, Hisaye	Nishizawa-Martinez, Akiko	Tsutsumi, Kii
Furukawa, Kazuko	Komine, Masako	Oba, Michiko	Uyeda, Aiko
Furuta, Kiwa	Kono, Robert	Ogino, Kono	Uyeno, Lillian
Goto, Morita	Kubo, Chiyeno	Okada, Hisano	Watanabe, Atsushi
Green, Leslie	Kubota, Tadashi	Okada, John	Watanabe, Suna
Hamanaka, Yone	Kubota, Takemitsu	Okada, Mamoru	Yakushijin, Toshiko
Hamasaki, Kimiye	Kumasaka, Roy	Okada, Matsuno	Yamagiwa, Hidejiro
Hasegawa, Hiroko	Kuramoto, Sumi	Ondo, Mae	Yamagiwa, Michihiko
Hayakawa, Tatsuro	Kusakabe, Brian	Ono, Shigeo	Yamaguchi, Masao
Hayashi, Kiyomi	Kuwahara, Akio	Otsuka, Eiichi	Yamamoto, Harry
Higa, Hatsumi	Maruoka, Shuzo	Rhoades, Dixie	Yamamoto, Hiroshi
Higa, James	Masumoto, Tadashi	Saito, Sutejiro	Yamamoto, Kimie
Higa, Tsuyuko	Matsuda, Esther	Sakamoto, Shigeo	Yamasaki, Yasuo
Higashi, Mina	Matsui, Masuko	Sakoda, Aya	Yamato, Hisataro
Hiraoka, Rose	Matsumoto, Benjamin	Sanada, Seiichi	Yamauchi, Howard
Horikawa, Hideyoshi	Mayeda, Frank	Segimoto, Toshie	Yamazaki, Toshio
Hoshiba, Yasukichi	Mikami, Yoshie	Seino, Sueki	Yanagimoto, Shokichi
Iida, Bob	Mitoma, Mabel	Shibuya, Masanari	Yoda, Wayne
Ikeda, Robert	Miyauchi, Yoshiko	Shimizu, Umetaro	Yokoyama, Kazuo
Ikeda, Taijiro	Mizuta, Sadano	Shirasago, Suna	Yoshida, William
Imanishi, Toshiko	Mori, Harue	Soejima, Roy	Yoshihara, Hide
Inouye, Hisa	Morikawa, Akiye	Suto, Judy	Yoshihara, Teruo
Iseri, Isamu	Morimoto, Denichi	Suzuki, Yahachi	Yoshinaka, Hanako
Isomura, Kiyuu	Morimoto, Nobu	Tabusa, Matsuyo	Yoshino, Lillian
Isomura, Nobuo	Morimoto, Ruth	Taguchi, Miho	Yukawa, Shizuye
Isomura, Toshiko			

DECEMBER SHOTSUKI HOYO

The December Shotsuki Hoyo Memorial Service will honor the memory of those listed below who passed away in the month of December. This service will be combined with the Joint Memorial Service on Wednesday, December 7, at 10 AM and will take place in-person at Seattle Betsuin guided by COVID safety protocols.

Aoki, Takao	Kawafune, Hisami	Nakamura, Lucile	Tachiyama, Misayo
Aoyama, Yoshiko	Kawahara, Masao	Nakamura, Sakae	Takahashi, Masao
Araki, Nisaku	Kawasaki, Meriko	Nakata, Hanako	Takano, Komaji
Asai, Daisaku	Kawasaki, Yoshiko	Nakatani, Roy	Takenaga, Misao
Bovee, June	Kido, Tom	Nakauye, Uichiro	Tamada, Junichi
Chen, Frank	Kikuchi, Mitsuyoshi	Nishimoto, Hideko	Tani, Shigemi
Deguchi, Seiichi	Kinomoto, Yutaka	Nishimura, Haruko	Tanigawa, Frank
Ding, Joyce	Kobuki, Haruko	Nose, James	Taniguchi, Saye
Doi, Mary	Kogita, Kaylin	Oba, George	Taniguchi, Toshio
Donchak, Kimiko	Kokita, Kaoru	Obata, Henry	Tanji, Shizuko
Fujihira, Teruko	Komoto, Amie	Okada, Bart	Tomoguchi, Ayako
Fujioka, Takeno	Komoto, Kimiyo	Okada, Fumiko	Tosaya, Kazuko
Fujishima, Sono	Komura, Elizabeth 'Betty'	Okada, Yoshito	Tsubouchi, Kinko
Fujita, Brian	Kondo, Miyoko	Oki, Shizuno	Tsuchida, Florence
Fujita, Tomiko	Koura, Arthur	Ono, Koshun	Tsuchida, Vicki
Furuta, Sumiko	Koura, Florence	Ono, Shigeru	Tsukamaki, Kanichi
Furuta, Yoshio	Kuramoto, Masayo	Ono, Wayne	Tsutsumi, Tamotsu
Hale, Don	Kyono, Motoji	Osaki, Aiki	Utsunomiya, Setsuko
Hamano, Gladys	Maekawa, Shojiro	Ozaki, Luisa	Uyeda, Henry
Hamasaki, Harry	Mano, Akira	Ozeki, Kikuo	Uyeda, Paul
Harada, Kameichi	Maruhashi, Mary	Saito, Yasu	Uyeda, Ryu
Harada, Roger	Masuda, Kika	Sakaguchi, Takeshi	Wakayama, Helen
Harrison, Roy	Masuda, Rose	Sakai, Nobuyo	Watanabe, Eitaro
Hata, Cheryl	Matsuda, Misu	Sakamoto, Kiyo	Watanabe, George
Hibino, Haruko	Matsui, Takashi	Sakamoto, Noboru	Watanabe, Ihei
Hirasawa, Walter	Matsumura, Sue	Sako, Sawayo	Watanabe, Shiro
Horikoshi, Fusano	Miura, Yoshio	Sapp, Madelyn	Watanabe, Yoshiye
Huynh, Thai	Miyamoto, Fusako	Shibata, Fusaye	Yamaguchi, Tomi
Ideta, Akio	Miyata, Mikiko	Shigaya, Harry	Yamamoto, George
Imanishi, Shigeo	Miyatake, Robert/Steven	Shigaya, Ken	Yamamoto, Noe
Inouye, Isamu	Miyoshi, Yoshitaro	Shigeno, Kimi	Yamane, Amy
Ishii, Setsunosuke	Mizuhara, Kiyoshi	Shimizu, Sengo	Yamane, Kōzō
Iwamoto, Yoshito	Mizumori, George	Shinsato, Yoshinori	Yamane, Toku
Izumi, Norio	Mizumoto, Choichi	Shiota, Yoshio	Yamashita, Goroku
Jinda, Iyo	Mori, Aiko	Simpson, Nellie	Yamauchi, Betty
Jinguji, Masayo	Mori, Takao	Suda, Sumiko	Yasuda, Satoshi
Kajiwara, Tadashi	Moriguchi, Akira	Suetsugu, Wayne	Yasui, Sumi
Kano, Masuko	Morita, Mary	Sugita, Reiko	Yokota, Tatsue
Kashima, Yoshiko	Moriya, Kenji	Sumida, Florence	Yoshida, Kiyoko
Kashiwa, Herbert	Moriya, Mary	Sumida, Koichi	Yoshida, Umeno
Katayama, Chikuji	Murakami, Jeff	Sumimoto, Shizuyo	Yuki, Koma
Kato, Mie	Nabeshima, Yoshikuni	Sumita, Sam	
Kato, Shigeo	Naganawa, Yei	Sunohara, Hiroko	
Kato, Tony	Nakagawa, Hanako	Suyematsu, Toshio	

November 2022 Seattle Betsuin Schedule

	Sunday	Monday	Tuesday	Wednesday	Thursday	Friday	Saturday
			1	2	3	4	5
				10 am Chanting & Dialogue / Shotsuki Hoyō/Joint Memorial Svc - In person		9:30 am Japanese Dharma Discussion - Zoom	
				Rimban's half day off	1:30 pm Nikkei Manor Service	10:30 am Japanese Play group	5 pm College Night
6	TEMPLE CLEAN-UP	7	8	9	10	11	12
9 am	Meditation Hybrid - In person / Zoom	Rimban's day off		10 am Chanting & Dialogue - In person		VETERANS DAY Office Closed	
10 am	SUNDAY SERVICE English Dharma Talk (Rimban)			7 pm SBBT Seminar-Zoom			
11 am	No Dharma Exchange Hybrid						
12 pm	No Japanese Dharma Talk						
2 pm	Karuna Class						2 pm Gagaku practice - Hybrid
	Sangha Class			Rimban's half day off	17	18	19
13		14	15	16	17	18	19
9 am	Meditation Hybrid - In person / Zoom	Rimban's day off	10 am Shinran Shonin Monthly Memorial Service				9:30 am Buddhist Book Study - Zoom
10 am	120TH BETSUIN ANNIVERSARY & EITAIKYO & MUEN HOYO SERVICE with OCHIGO						
	English Dharma Talk (Rev. Jay Shinseki)						
11 am	Dharma Exchange Hybrid - In person / Zoom				1:30 pm Nikkei Manor Service		
	Japanese Dharma Talk (Rimban)			Rimban's half day off			
20		21	22	23	24	25	26
9 am	Meditation Hybrid - In person / Zoom	Rimban's day off		11 am Merrill Gardens Renton	Thanksgiving Day Office closed	Office closed	
10 am	SUNDAY SERVICE						
	English Dharma Talk (MA Irene Goto)						
11 am	Dharma Exchange Hybrid - In person / Zoom	8 pm Newsletter deadline					
	Japanese Dharma Talk (video)						
27		28	29	30	DECEMBER 2022 SPECIAL EVENTS		
9 am	Meditation Hybrid - In person / Zoom	Rimban's day off		10 am Chanting & Dialogue - In person	December 4	Bodhi Day Service	
10 am	AUTUMN MUSIC SERVICE				December 11	All DS Activity	
	English Dharma Talk (Rimban)				December 31	New Year's Eve Service (Joya-e)	
11 am	Dharma Exchange Hybrid - In person / Zoom						
	Japanese Dharma Talk (video)			Rimban's half day off			

Seattle Buddhist Church
1427 S Main Street
Seattle, WA 98144

2022 NOVEMBER
Wheel of the Sangha
A Monthly Newsletter of
Seattle Buddhist Church

EVERYDAY BUDDHIST:
HTTPS://
WWW.EVERYDAYBUDDHIST.
ORG

**2022 FAMILY
MEMORIAL
SERVICE
SCHEDULE**

	<u>2010</u>	13th year memorial
	<u>2006</u>	17th year memorial
<u>Year of Death</u> Service	<u>1998</u>	25th year memorial
<u>2021</u>	<u>1990</u>	33rd year memorial
1st year memorial		
<u>2020</u>	<u>1973</u>	50th year memorial
3rd year memorial		
<u>2016</u>		Please call the Temple office at (206) 329-0800 to schedule a service.
7th year memorial		- JN

**Dharma Gatherings, HOWAKAI:
Nikkei Manor 1st & 3rd Thursdays
at 1:30PM
Merrill Gardens, Renton
4th Wednesdays at 11:00AM**
please consult the facility for visitation guidelines

**Shotsuki/Joint Memorial Service will
take place in-person on Wednesday,
November 2, 2022 at 10:00AM;
passed loved-ones will be remembered.
See p. 11.**

SUNDAY 10:00AM Services
In-Person and Live-Streamed
[https://youtube.com/
seattlebuddhisttemple](https://youtube.com/seattlebuddhisttemple)

2022 NOVEMBER SCHEDULE

Wednesdays 10:00AM plus 11:00
AM Sutra Chanting & Dialogue in-person only

**NOVEMBER SHOTSUKI HOYO ON
WEDNESDAY, NOVEMBER 2, 2022**
—in-person
jointly with Monthly Memorial Service

See p. 13 for calendar

NOTICE

**Dharma Exchange
IS BACK! Sundays
after 10:00AM Service
11:00AM**

**Get the Zoom Link
by Registering at
[https://
us02web.zoom.us/
meeting/register/
tZEvd-
uspjgqHt2AVr-
Quovtn1e24imCjey
Ph](https://us02web.zoom.us/meeting/register/tZEvd-uspjgqHt2AVr-Quovtn1e24imCjeyPh) or attend in-
person.**

Contact Us

Seattle Betsuin
Buddhist Temple
1427 S Main Street
Seattle, WA 98144

Phone: 206.329.0800
Fax: (206) 329-3703
office @SeattleBetsuin.org
SeattleBetsuin.org

Office Hours:
9:30AM-3:00PM
Call for recorded
updates and for
emergencies

Minister 24 hours
206.779.2214

Wheel of the Sangha Editors
Irene Goto, English: newsletter@seattlebetsuin.org
Machiko Wada, Japanese
Deadline is the third Monday each month at 8PM