



# Wheel of the Sangha

December 2021

Seattle Betsuin Buddhist Temple, A Shin Buddhist Temple,  
Jodo Shinshu Nishi Hongwanji-ha

a monthly newsletter of Seattle Buddhist Church  
**Volume 41 Issue 12**  
online only

## **“Kisa Gotami and Her Dead Child”**

by Rimban Katsuya Kusunoki

**I**t is a story when Sakyamuni Buddha had stayed at the Jetavana monastery. There was a young mother living in Sravasti in the Kosala kingdom. Her name was Kisa Gotami. She married a rich young man and a son was born to them. The son died when he was a toddler and Kisa Gotami was stricken with grief. When the family members were preparing for his funeral service, she carried her dead son. She went everywhere asking for medicine to restore her son to life. **“My son is dying. Please tell me which medicine could cure his illness. Please tell me how to restore him to life.”**

When people heard her crying and screaming, some people were surprised and jumped out from their house to see what happened. Some people were whispering that she had gone mad with grief. One old lady came and told Kisa Gotami, **“I am sorry for the loss of your son. I wish I had the medicine to restore him because I lost my father, too. I also tried to restore him to life. I understood that he was really gone, but still I could not give up. I walked around and asked people how to cure and restore him to life. I prayed for a miracle to happen. At that time, one person cured our pain.”**

**“Who is the person?”**

**“He is Sakyamuni Buddha. He is in the Jetavana monastery, now. You should meet him. I believe that he has the medicine you want.”**

Thus, she went to the Buddha right away and asked him, **“I heard you have a wondrous medicine to cure any illness and pain. Please give me the medicine to restore my son’s life.”**

Sakyamuni Buddha replied, **“I see. Get some mustard seeds from a home where death has not occurred. You have to get the mustard seeds from a family who has never lost their parents, children, brothers and sisters.”**

When she heard Sakyamuni Buddha’s reply, she cheered up because she thought by getting the mustard seeds, her son’s life would be restored. She went back to the town and looked door to door for some mustard seeds. Kisa Gotami walked around to visit house after house. As the day dragged on, she went back to Sakyamuni Buddha. Sakyamuni Buddha asked her, **“Did you get some mustard seeds?”**

continued on p. 2...



Rev Kusunoki at North Bend with CF group, p. 5

### **Join Seattle Betsuin's Virtual Groups:**

*Dharma Exchange: pp.2,6,10,17*  
*Meditation, Book Study: p. 5*  
*Sutra Dialogue: calendar and p. 17*

To join these groups, e-mail for Links:  
webmaster@seattlebetsuin.com or  
[newsletter@seattlebetsuin.com](mailto:newsletter@seattlebetsuin.com)

specify the group in the subject line

### **December SCHEDULE**

Streamed 10:00AM Services:  
every Sunday and Wednesday\*;  
Saturday, December 11 only, with  
Shotsuki Hoyo Memorial see p. 14

### **View services virtually on**

[https://youtube.com/  
seattlebuddhisttemple](https://youtube.com/seattlebuddhisttemple)

**Calendar:** p.16 and at  
[SeattleBetsuin.com/calendar](https://seattlebetsuin.com/calendar)

Receive a digital copy of Seattle  
Betsuin Monthly Newsletter by  
leaving your email at this link:

[\*\*SBBT Monthly Newsletter\*\*](#)

\*No services on Dec 22, 29

...Kisa Gotami continued from p. 1

**“No, I could not find any family where death had not occurred. The people were only too willing to give their mustard seeds, but they could not claim to have not lost a loved one to death. I realized that mine was not the only family that had faced death and that there were more people dead than living.”**

**Sakyamuni Buddha told her, “You believed your son never died. You should not think that you are the only one who has lost a son. As you have realized now, death comes to all beings. Before their desires are satiated, death takes them away. When we encounter it, we all suffer and have pain from parting from our loved one.”**

Sakyamuni Buddha talked about the truth of our life and consoled her. While she was listening to him, she realized how simply the Sakyamuni Buddha had taught her the most important lesson: that everything that is born must eventually die. Then she was able to accept her son’s death and felt that causes of her pain had been removed from her heart and mind. Perceiving the fleeting nature and impermanency of life, Kisa Gotami decided to renounce the worldly life. She became one of Sakyamuni Buddha’s disciples to walk the path to Nirvana.

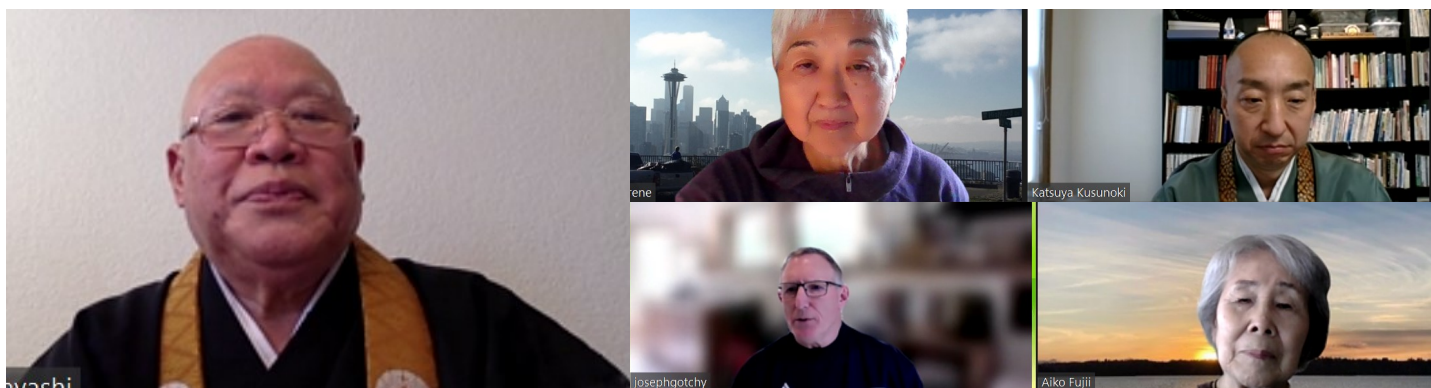
It is the famous story, “Kisa Gotami and Her Dead Child.” In October, I took a class taught by Rev. Naruki Yamamoto. He worked at a hospital in Japan as a Buddhist Chaplain. The class was about “Buddhist minister and terminal care support”. One

day, he talked about the story, “Kisa Gotami” at the hospital and a nurse asked him, **“Was Kisa Gotami cured of her pain only because she realized she was not the only one who lost a son or family member? I have a different understanding. While she was visiting house to house, people must have given her condolences and warm words. I believe that these words cured her pain.”**

I never thought about such perspective. I truly appreciated it. Our life is impermanent and ends one day. No one can avoid it. Death comes to everyone without discrimination. It is important to accept the truth and reality of our human life. It is called wisdom to see things as they are. Wisdom always comes along with Compassion. These are inseparable teachings. Compassion is described as ‘giving pleasure and happiness’ and ‘removing pain and suffering.’ It is the heart that understands the pain of others. As the story says, everyone has experienced losing their family members and friends. They deeply understood the pain of Kisa Gotami. When she was visiting houses, many people must have expressed their sympathy. Some people might cry together. Some people might hold her. Kisa Gotami received Compassion from all these people and then gradually her pain must have been relieved. Her heart and mind must have been cured. Through her visiting house to house, Sakyamuni Buddha let her receive Wisdom and Compassion. It is how I appreciate this story. Gassho,



## Rev. Hoshu Matsubayashi was guest at Dharma Exchange



and was also speaker at Eitaikyo Service commemorating the 120th Anniversary of Seattle Betsuin on November 14, 2021. The past Rimban of Seattle Betsuin, who retired in 2012, was accompanied on Zoom by Mrs. Matsubayashi. They were welcomed by many attendees who were delighted to see both looking well. Sensei answered questions presented in advance, and said that he is working to complete his book on *Shoshinge* by his 88th birthday. We look forward to his book and wish them both well. Submitted by Irene Goto



# Betsuin Tea Talk

## “Temple News”

by Leanne Nishi-Wong

**Seattle Betsuin Board** – Ballots will be sent via mail for the Board positions that will begin in January of 2022.

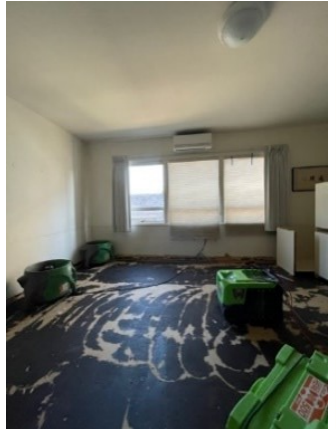
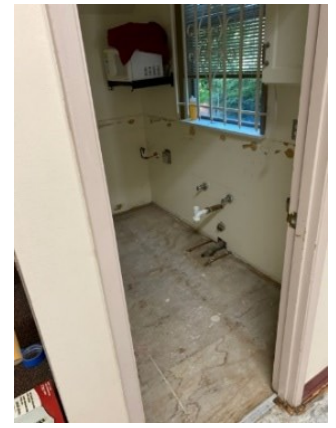
**Dharma Renewal Committee** – The temple remains closed to public events and Sunday services. Evaluations for safe gatherings will be assessed after the new year.

**Memorial Hall** – On June 28, Memorial Hall was severely damaged by flooding caused by a broken water pipe. As mentioned in the August 2021 newsletter, the Betsuin is fortunate to have a neighbor who reported the flood, as well as the temple maintenance team who initially removed debris and mopped the affected areas.

The Memorial Hall Project Committee, lead by Grace Tazuma and Gary Shibata, have dealt with the insurance company, adjusters, clean up contractors and construction companies. After several months of negotiations, the remodel has begun.

The insurance company will pay to bring the flooded spaces back to their original condition; in addition, the Betsuin Board approved upgrades that go beyond what the insurance will cover, such as replacing pipes and upgrading the Memorial Hall men’s and women’s restrooms.

MJ Takisaki Inc. has been chosen to remodel/reconstruct Memorial Hall. This is the same construction company used for the ADA bathroom and the kitchenette project completed in March. The reconstruction/remodel will cost approximately \$90,000, plus permits and tax. Thus far, the insurance company has agreed to pay between 60-70% of the total estimate, which includes payment for volunteer labor, documented flood damage, and equipment destroyed in the garage. MJ Takisaki



was chosen based on their reliability, quality of work, and flexibility in working with the temple services and activities. If you have any questions, please feel free to contact me at [seattlebesuinchairperson@gmail.com](mailto:seattlebesuinchairperson@gmail.com).

These are a few pictures of the damage to Memorial Hall. The Betsuin is looking forward to the completion of the project and will post “after” pictures in a couple of months.

**Temple Activities** – On-line services, dharma exchanges and events continue to be streamed via Zoom and YouTube. If you would like to suggest topics of interest, special guest speakers or events within the Jodo Shinshu community, please reach out to me or Rinban Kusunoki.

**Sangha Connections** – The Seattle Betsuin is looking for volunteers to lead or participate in several areas of the temple’s operations. Contact me at [seattlebetsuinchairperson@gmail.com](mailto:seattlebetsuinchairperson@gmail.com) for additional information.

**December** – Thank you for your continued support of the Betsuin. Your membership and donations are sincerely appreciated. As this year comes to a close, may you find comfort in Amida Buddha’s compassion. Wishing you a peaceful and reflective holiday season.

**NEW YEAR’S EVE 12NOON: Joya-e Bell Ringing, In-Person**  
**7PM: Joya-e Service, Streamed Online**



# Celebrating the Seattle Betsuin's 120th!

**Where: Seattle Betsuin Buddhist Temple**

Eitai-kyo and 120th Anniversary Service is viewable at  
[YouTube.com/SeattleBuddhistTemple](https://www.youtube.com/SeattleBuddhistTemple)

[buddhist church service - YouTube](#)

**More Information at**  
<https://seattlebetsuin.com>

*We'll be celebrating the 120th anniversary all year so stay tuned for more events coming soon!*

## SEATTLE BETSUIN BUDDHIST TEMPLE



1901

2021



### CELEBRATING 120 YEARS



Rev. Kaz Nakata,  
M.A., M.B.A

**Bodhi Day Online Live Seminar**  
**Lumbini - A Journey to Explore the Roots of Dana**  
**Rev. Kazuaki Nakata (Central District)**

**Date: Dec 8, 2021**  
**Time: 6:30pm-8:30pm**

You may register by scanning the QR code with your phone camera or by following the attached registration link.

For more information on events, services, donations and more go to [www.seattlebetsuin.com](http://www.seattlebetsuin.com)



View events below  
and more at

[BCA Center for Buddhist Education - YouTube](#)

BCA Center for Buddhist  
Education Presents (In Japanese):  
**JODO SHINSHU WO**  
**TATOERU TO**

Reverend Kiyonobu Kuwahara



November 13, 2021

1:54

BCA Center for Buddhist  
Education Presents:

**SUSHI MAKING**  
**AT HOME**

Koichi Mizushima



November 20, 2021

1:11

## Seattle Betsuin MEMBERSHIP

**The basic dues towards the Church maintenance/operations are \$400 for those under 70 years of age and \$350 for those over 70 years old.**

[Online Membership Form](#)

## DIAL THE DHARMA

Call the toll free number - 800-817-7918 to hear Bishop Harada's message

Push "1" for English and "2" for Japanese



## Jr YBA at North Bend Property Jr.

YBA met at the temple's North Bend property on November 13, 2021. The skies cleared just long enough for our meeting, and we enjoyed a fireside service led by Rev. Kusunoki.

We held our elections, began planning for our upcoming community service event and talked about our goals and plans for the upcoming year.

Thank you to Rev. Kusunoki for conducting service and to Mr. Murata, Danilo and Adlai for building the fire to keep us warm.

Following our outdoor meeting, we met back at the Temple the next day to help out at the Eitaikyo Oshoko event. We all enjoyed being back at the temple and seeing familiar faces.



Submitted by Lacey Brundige

## WE'RE KEEPING OUR LINKS BRIGHT AND STRONG

### Meditation meets each Sunday morning at 9:00AM—9:45AM.

We open with SanBujo, Sit in Gratitude Meditation for 20 minutes, chant Nembutsu and close with discussion. Please join us on Zoom! Email [newsletter@seattlebetsuin.com](mailto:newsletter@seattlebetsuin.com) and specify SBC Meditation to receive the Link. An additional, abbreviated, mid-week session is being tried, currently on Wednesdays at 4:10PM.

### Next Buddhist Book Study: Saturday, December 4, 2021 9:30AM

The Book Study group will meet via Zoom on Sat. Dec. 4 at 9:30am. For this meeting we will continue the discussion on Heart of the Shin Buddhist Path: A Life of Awakening by Takamaro Shigaraki, translated by Rev. David Matsumoto. **The reading is all of Chap. 3, The Shin Buddhist Path, pp. 47-61.** For the 2005 edition the pages are 58-83. For more information and the Zoom link, contact [newsletter@seattlebetsuin.com](mailto:newsletter@seattlebetsuin.com) - Wayne Suyenaga

# Graduating High School? or College Student (in your 2nd year or higher) with a Science Major?

Submitted by Janie Okawa

The Betsuin sponsors scholarships for High School seniors and college students with science majors in at least their second year. Applications are available December 1st, and completed applications are due February 20, 2022.

[The Tsujihara Family Memorial Scholarship provides recognition to high school seniors who have shown leadership and participation at the Seattle Betsuin, school, and community.](#) The Masaru & Mitsuma Shimokon Scholarship Grant was gifted and established by Dr. Susumu Shimokon who was grateful for the care of the doctors and nurses who cared for his parents, and those in the sciences and technology fields.

Apply if:

- you or your parents/guardians are current Sustaining Members of the Seattle Betsuin Buddhist Temple;
- you are involved with activities and programs at the Seattle Betsuin.
- for the **Tsujihara Family Memorial scholarship**, you will graduate from high school in 2022 and plan to enter an institution of higher education, or vocational school in 2022.
- for the **Masaru and Mitsuma Shimokon Scholarship Grant**, you are a college student in your 2<sup>nd</sup> year or higher, and **accepted** in a major of: medicine, nursing, or a science field (e.g. engineering, computer science).

For the applications, or more information please contact the Betsuin office, [office@seattlebetsuin.com](mailto:office@seattlebetsuin.com) : subject "Betsuin Scholarship - Your Name".

**Send completed applications by February 20, 2022, 2:30 p.m. to:**

Scholarship Administrator  
Seattle Betsuin Buddhist Church  
1427 S. Main St.  
Seattle, WA 98144

## ON BEHALF OF THE MEMBERSHIP COMMITTEE...

We would like to "thank" the following for contributing their **2021** sustaining membership dues - the basic dues towards Temple maintenance/operations (i.e.- fix the roof) and operations and programs (i.e. – Live Streaming of Sunday services and Special services (i.e. All Sangha Memorial); Dharma School

classes; seminars). The minimum for individual membership is \$400 (for under 70 years of age), and \$350 (for 70 years of age and over).

*Masatoshi Aoyama, Harrison Chinn, Diane Deavers, Jeanne Deavers, John & Lynda Hamakami, Alan & Lori Hoshino, Mary Katayama, Shizue Kikuchi, June Kosai, Lynn Miyauchi, Joe Naemura & Janie Okawa, Leslie Sumida, Mark Yuasa*

(Compiled by Howard, Joan, Pauline & Steph)

**Shotsuki/Joint Memorial Service will be live-streamed on Saturday, December 4, 2021 at 10:00AM. The names of those loved-ones who will be remembered are listed on page 14. Go to <http://www.youtube.com/seattlebuddhisttemple> to view.**

## Seattle Betsuin 2021 Dharma Exchange

Sundays 11:00AM - Noon - via Zoom

**NEW!**

If you are attending for the first-time, please register at

<https://us02web.zoom.us/meeting/register/tZEvd-uspjgpHt2AVrQuovtn1e24imCjeyPh>

## New Year's Party - Virtual Celebration Sun, Jan 9, 2022

# Musical Notes

submitted by Kemi Nakabayashi

Thank you to the many people who contributed to the 13<sup>th</sup> annual Autumn Music Service presented virtually on Sunday morning, November 21. How nice to hear the variety of sound and music, from the bonsho ringing by Dennis Shibata and the kansho by Ministers Assistant Jason Yokoyama to the new gatha recordings! Kayla Butler recording Yumi Hojo's gathas on glockenspiel with me added such a bright and festive touch to honor Mrs. Hojo's 100<sup>th</sup> birthday year. Mas Tamekuni provided the vocal and ukulele track from which Donna Sasaki from Tacoma Buddhist Temple could add her voice and ukulele to her gatha *Amida's Golden Chain of Love*. Thank you to Kanako Kashima and Paul Mori for also providing supporting voices for this new recording. We also appreciate the special sutra re-

ording by Rev. Irene Goto and Minister's Assistant Leonora Clarke with Rev. Cyndi Yasaki from Tacoma Buddhist Temple and the readings by Michiko Wong and Emi Nakashima. Rev. Kusunoki's Minds of Ministers discussion format with Rev. Tadao Koyama from Tacoma Buddhist Temple and Rev. Yoshimichi Ouchi from Toronto Buddhist Temple was lively and informative. Rev. Koyama and Rev. Ouchi have been regular participants in the monthly Seattle Gagaku Group Zoom practice sessions and are well-versed in ritual and chanting from the special Gonshikido training. The archived version of the Music Service can be viewed any time. Please encourage your extended family and friends to check out the music service and join us for future services on the Seattle Betsuin YouTube channel and subscribe in order to reach the goal of 1000 subscribers by the end of this month.



# Seattle Buddhist Women's Association

by Janie Okawa

*SBBWA's Mission is to cultivate religious awareness as Jodo Shinshu Buddhist women and promote fellowship among its members; to serve and support the Seattle Betsuin, and contribute services to the welfare of the community.*

## January Food drive in honor of Lady Kujo and Lady Ohtani Memorial Service -

Thank you to Grace for making the connections and Dharma School and YBA and for their enthusiasm and energy. We will be collecting nonperishable food items the weekend of **January 22nd -23rd for the drive-through** collection.

The Jr. YBA kids will manage the drive-thru both days. YBA will be making a flyer and will put information in the newsletter and email blasts. BWA will deliver the donations to Bailey Gazhert Elementary School in our neighborhood.



**Holiday kimochi gifts** - our Social committee (Karen A. Susie T. Lorraine, Fran S) had been hard at work planning small holiday gifts to 42 of our most senior SBBWA members. The committee will collect, pack and deliver face masks, hand sanitizers, Buddhist calendars, and fruit to: Lakeshore, Merrill Gardens, Nikkei Manor, Midori Condos, Uwajimaya Village, Chateau at Valley Center, Truewood, Wisteria View, and various individual homes.

**Oral history project** has begun interviewing our most senior members. About half a dozen are completed. If you would like to suggest interviewees, or would like to interview others, please contact Tina Ko.

Please respond to **Japanese language classes** survey so instructors, Mae Yamasaki and Emi Nakashima can get a better idea of our needs and goals. The questions have been sent out via email to all members at the end of November.

Next Board meeting - **December 12, 2021** (election of officers)



# Dharma School Report



Thank you to the middle school DS class who organized the very successful outdoor Trunk or Treat event on the clear



and dry Halloween day. Board members, teachers, DS students, Campfire, Scout and playgroup families were invited to participate by hosting a trunk and/or trunk or treating around the upper parking lot. Adults were able to catch up over coffee and pastries while kiddos enjoyed walking from car to car, showing off their costumes and collecting treats.

**Our next All DS event will be a Zoom Children's Service on Dec. 5.** Students will lead the

service— live, and learn/review the importance of Bodhi Day.

## Classroom Reports

**Pre-K/K** students received new onenjus and made panda cases to protect them. This lesson was a follow-up to learning how to care for onenjus and keep them happy. The children are also learning about being thankful. They listened to The Thankful Book story and then colored a picture of a few things they are thankful for – their friends, home, and healthy foods, and then drew a picture of their own family, which they are specifically grateful for. To celebrate Thanksgiving the children learned some fun facts about Thanksgiving in Japan. Their project was to make a “Thankful Tree” to show what they are thankful for.

**3/4/5 Grade** class opens and closes with Gassho.



We all now have an onenju to use during our Zoom classes, after making one in class. Our teachers and some of the students also used our newly made onenjus at the temple when we offered incense to celebrate Eitai-kyo and the Betsuin's 120th anniversary. Since our students will be participating in the All Zoom Children's service on Dec. 5, we talked about Bodhi Day and made a Bodhi Day ornament together in November.

- submitted by Joyce Tsuji



# The Seattle Betsuin Gratefully Acknowledges The Following Donations 2021 October - November

## Funeral / Memorial / Nokotsudo:

## Given by:

Kikutaro Nakamura – Memorial	\$ 1,000.00	Masako & Sam Uchida
Mae Deguchi – Memorial	\$ 400.00	Janice Deguchi
Allan Terada – First Year Memorial	\$ 200.00	Kayoko Terada
	\$ 100.00	Ronald & Suzuko Teraada
Hiroko Hasegawa – In Memory of	\$ 100.00	Kathy Hasegawa
Nokotsudo	\$ 100.00	Grace Tazuma

## In Memory of:

## Given by:

Grandmother in Korea	Julianne Hong
Yasunori Kawahara	Donald & Karen Akira; Roy & Deanna Ikegami; Ben & Etsu Shimbo
Taka Kogita	Mae Miyamoto; Ryan Tsuji
Shizu Matsuoka	Wayne Kuramoto
Craig Nakano	Kevin Tanemura; Michael & Gayle Teramoto
Katsumi “Kats” Tanino	Duane & Ann Mayeda; Gary & Deborah Shibata (to Endowment); Michael & Gayle Teramoto
Teruyo Terrie Tanino	Gary & Deborah Shibata (to Endowment); Michael & Gayle Teramoto
Allan Terada	Mabel Nishizaki

## Endowment:

1. Gary & Deborah Shibata – In Honor of Grandson’s senior graduation
2. Gary & Deborah Shibata – In Memory of Katsumi “Kats” Tanino and Teruyo Terrie Tanino

## General Donations:

### Donor:

### For:

Seattle Hiroshima Club	Use of facilities – Dining room and equipment
Tami Arinobu (2 donations)	Costco United Way Program / Employee Participation
Akemi Ishida	Appreciation for Japanese Hoza and Ohigan message by Rev. Adams
Stuart Teramoto	General Donation
Anonymous	General Donation
Rev. Katsuya and Ayano Kusunoki	Celebration of Shichi-Go-San (7,5,3)
Anonymous	General Donation
Fujiye Yamasaki	General Donation
James & Tomiko Zumoto	General Donation
Donna Zumoto	General Donation
Yuko Morihiro	Appreciation for on-line play group
Jeff Ko & Tina Zumoto-	Appreciation for Mukashi, Mukashi

continued on p. 10....

....Donations continued from p.9

Grace Tazuma

Donation to Fund Management to be allocated to:

Ijikai Membership for 2022; Nokotsudo; Camp Fire; Jr. YBA; Memorial Hall Flood Reconstruction / Remodel

Kroger Inc.

General Donation (Participation by 20 families)

Josephine Watanabe

Shin Buddhist Studies

Kenny & Yoshie Dodobara

Japanese Fall Seminar

**Special Services:**

**(NOTE: Acronym "IMO" = In Memory of)**

**Hatsubon/Obon:**

Fujino, Sue; Habu, Arthur & Joan Y (**IMO** Jack Habu & Fumiyo Habu); Habu, Gordon & Mae Yamasaki -; Hale, Ellen; Huh, Jamie; Kaminishi, Gail; Kawahara, Hideo & Joyce; Kojima, Esther; Kuwahara, Kinue; McManigal, Richard & Nancy (**IMO** Craig Nakano & Krista Nakano); Mizoguchi, Allan & Lorraine Blackler (**IMO** Harumi "Marge" Fujioka; Chikayo Fujioka; Ken Fujioka; Russell Fujioka); Nakanishi, Kiyoko; Parke, Troy & Mayumi Terada-; Sakuma, Pauline; Sugai, Esther; Takemura, Yoshiaki & Naomi; Tanemura, Peggy; Toyoshima, Michiko; Uyenishi, Tazuko; Yee, Fukuyo.

**Fall Ohigan:**

Dodobara, Kenny & Yoshie; Fujinari, Suzanne; Goto, Irene; Habu, Gordon & Mae Yamasaki-; Hale, Ellen; Hamakawa, Ron; Hara, Reiko; Harada, Setsuko; Kaku, Dale & Shizue; Kaminishi, Gail; Kashiwa, Ann T.; Kato, Nina Tomita-; Kawahara, Ritsuko; Keltner, Marc & Janice; Kishi, Rose A; Kodagoda, Kimiko; Kumasaka, Lisa; Kunihiro, M. Carolyn; Kuwahara, Kinue; Mano, George & Irene; Mano, Mariko; Mizumori, Sheri; Mori, Paul Bruce & Teresa; Nagai, Ernest & Sanaye (Sunnie); Nakamura, Yoshio & Judith; Namekata, Tsukasa & Keiko; Okada, Barry & Marlene; Oxrieder, Gregory & Catherine Ann; Sanchez, Angela (Seon); Seko, Robert; Shimizu, Sato & Darlene; Tahara, Masaru & Anna; Taketa, Susan; Tanabe, Ieene Kawahara-; Tazuma, Grace; Tazuma, Miyoko; Terada, Calvin J. & Yvette; Terada, Ronald & Suzuko; Teramoto, Stuart; Uyenishi, Tazuko; Wada, Machiko; Watanabe, Henry & Christy; Wong, Leanne Nishi-; Yanari, Yoko; Yee, Fukuyo; Yokoyama, Kevin & Kari Ann; Yutani, Nobuo; Donna Zumoto; Zumoto, James & Tomiko.

**Eitaikyo/Muen Hoyo:**

Chinn, Connie Ozeki-; Fujinari, Suzanne; Hanada, Peggy; Hara, Reiko; Harada, Setsuko; Hasegawa, Kathy; Hoshino, Alan A. & Lori; Kashima, Tetsuden & Cecilia Kanako; Kashiwa, Ann T.; Kawamoto, Masako; Kishi, Rose; Ko, Jeffrey & Tina Zumoto -; Shimbo, Ben & Etsu; Takashima, Kiyoko; Tanemura, Kevin; Wong, Leanne Nishi-; Keltner, Marc & Janice; Kunihiro, M. Carolyn; Kuramoto, Wayne; Mizumori, Sheri; Nakano, Joan; Nakano, Junko; Namekata, Tsukasa & Keiko; Okada, Barry & Marlene; Oxrieder, Gregory & Catherine Ann; Shibata, Dennis M.; Shimizu, Sato & Darlene; Taketa, Sonoe; Tanemura, Peggy; Terada, Kayoko; Teramoto, Stuart; Uchida, Sam & Masako; Yabuki, Akiko; Yoshida, Fuyo; Yutani, Nobuo

**Betsuin Anniversary:**

Donald & Karen Akira – Celebration of Betsuin's 120<sup>th</sup> Year Anniversary; Robert Giulietti; Ritsuko Kawahara; Angela (Seon) Sanchez;

**Bodhi Day:** Kathy Hasegawa

**December Shotsuki Hoyo:** Georgette I. Magnin

Additional donations will be listed in subsequent Newsletter editions

## Oral History Dharma Exchange

**What is it?**

- In the 1990s, the original Archives Committee interviewed over 60 Sangha members in an oral history project.
- Archives Committee has contracted with Densho to digitize these oral histories.
- Currently, members of the Archives Committee are interviewing SBBWA to collect their oral histories.



On November 21, 2021 Andrea Mano and Dana Nakashima reported via Zoom that Densho.org now has an Archives Spotlight: *The Seattle Buddhist Temple Collections*. Also, that there are hundreds of books from the Research and Publication project to be digitally archived. Assistance for documenting, preserving, and sharing material are welcome. Please request a release form when donating items.

- Submitted by Irene Goto

## CBE Seminars Online For All (SOFA) Series

Explore topics in Jodo Shinshu doctrine, practice, and culture

# MAKING THE DHARMA CONNECTION: Buddhism & Children's Books

A Workshop for Parents/Guardians, Grandparents, Teachers & Ministers

**SATURDAY,  
JANUARY 8, 2022  
11 AM - 1 PM (PST)**

GUEST SPEAKER:

**KIYO MASUDA**

EDUCATION RESOURCE SPECIALIST

Who doesn't love a good story? Experience the world of children's literature where they become the venue for understanding life through the wisdom and compassion of the Buddhist teachings. This seminar will explore how the dharma connection is relevant, meaningful, and applicable through children's books.

Topics will include:

- ◆ Introducing "The Essential Teachings" as a resource, lens, and reading compass
- ◆ Hear book talks that address problems encountered in everyday life and the dharma solution
- ◆ Explore ways to engage readers of all ages
- ◆ Share your favorite book titles

\* Resource packet included \*



**Kiyo Masuda** is a retired educator. Since her retirement, she has been working on this project, "Making the Dharma Connection through Children's Literature."

With the support and assistance of the Palo Alto Dharma School teachers, the "Essential Teachings" and children's literature resources were developed. Kiyo strongly believes that the dharma must be taught from an early age, while children are still toddlers, in order for them to naturally develop a Jodo Shinshu understanding of life. This is particularly important in today's troubled world.

V11-03

### Register online

<https://forms.gle/xF1JePg7baoWm68u8>

Donations are gratefully accepted.

CONTACT: [cbe@bcahq.org](mailto:cbe@bcahq.org) (510) 809-1460

Visit: <https://www.buddhistchurchesofamerica.org/buddhist-education>

## CBE Seminars Online For All (SOFA) Series

Explore topics in Jodo Shinshu doctrine, practice, and culture

# REFLECTIONS *on the life and work of* REV. GYOMAY KUBOSE

**SATURDAY,  
JANUARY 22, 2022  
11 AM - 1 PM (PST)**

GUEST SPEAKER:

**REV. MARVIN HARADA**

BISHOP, BUDDHIST CHURCHES OF AMERICA



Prior to appointment as the bishop of BCA in April, 2020, Rev. Harada served as resident minister of the Orange County Buddhist Church for over three decades. He is the author of [DISCOVERING BUDDHISM IN EVERYDAY LIFE](#). Rev. Harada studied with Rev. Kubose as he embarked on his ministerial path, deeply inspired by his example.

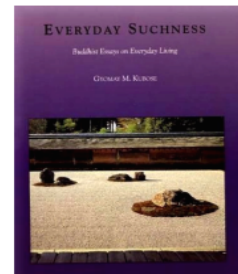
*I have always dreamed of establishing an American Buddhism - different from Indian, Chinese, or Japanese Buddhism - a uniquely American Buddhism that could be easily understood and practiced by Americans and that would contribute to American life and culture...*

- [Rev. Gyomay M. Kubose](#)



**Rev. Gyomay Kubose**  
(June 21, 1905–March 29, 2000)

Author of [EVERYDAY SUCHNESS: BUDDHIST ESSAYS ON EVERYDAY LIVING](#) (1967) and other works.



Born in the U.S., Rev. Kubose spent his early years in Japan. He attended University of California at Berkeley, earned a degree in Philosophy in 1935, then went to Japan to study under his teacher, Rev. Haya Akegarasu at his Dai-Nippon Bunkyo-kenkyu-in... He returned to the US in 1941 just prior to World War II and spent two years in the Heart Mountain Relocation Camp in Wyoming... In 1944, he founded the Buddhist Temple of Chicago..."

Photos and excerpted from [Bright Dawn](#)

V11-11

**Register online**

<https://forms.gle/CjoU2aA6gRZAXp198>

[Donations](#) are gratefully accepted.

CONTACT: [cbe@bcahq.org](mailto:cbe@bcahq.org) (510) 809-1460

Visit: <https://www.buddhistchurchesofamerica.org/buddhist-education>



Here at EVERYDAY BUDDHIST we're taking a moment to reflect on our one year anniversary of launching the EVERDAY BUDDHIST Course Pathway. A lot of hard work has gone into producing 20+ courses, live events, and other content for all of you from the beginner to the lifelong practitioner. This past year has been difficult for many, and we hope our content has provided value in coping with challenges and your Buddhist practice in your everyday lives. As we look forward to 2022, we want to share some exciting news about our offering in the coming year!

### New Course Pathway courses!

- New courses will continue to be added to the EVERYDAY BUDDHIST Course Pathway and expand on the 20+ course offering as you begin or continue your journey in the coming year.
- Curated topics complementing the continuation of the EVERYDAY BUDDHIST Course Pathway.
- Courses will continue to focus on the four core areas of Buddha, Dharma, Sangha and Practice.
- Available exclusively to subscribers.

### New Guest Speaker Series!

- Our Guest Speaker series will be presented in a new stand-alone format for individual viewing and also compliment the EVERYDAY BUDDHIST Course Pathway.
- Guest Speakers will present in an all-new style and format (think "TED Talk") and will be produced throughout 2022.
- Guest Speakers include ministers and thought leaders in our Buddhist community and add diverse Buddhist perspectives to our offering.
- Available exclusively to subscribers.

### New Live Chats!

- New Live Chat workshops will be offered throughout 2022 and each event will be focused on an aspect of contemporary Buddhism framed on "How To" enhance your daily practice.
- Live Chat workshops presented in a virtual "hands-on" experience.
- Leader led "How To" presentation and interactive group discussion.
- Included with subscription.

### New Blog Posts!

- The EVERYDAY BUDDHIST Blog will continue to be published throughout 2022 with new contributors bringing additional diverse Buddhist perspectives to our Blog content.
- Regular posts and prompts to reflect on your everyday Buddhist practice.
- Free to all on our email list and visitors to everydaybuddhist.org.

### New Additional Content!

Thanks to your valuable feedback we are working on developing additional features and content to further expand our offering in 2022.

In Closing, we are grateful for your continued support and look forward to the opportunity to provide you an exceptional EVERYDAY BUDDHIST experience.

Gassho, The EVERYDAY BUDDHIST Team

If you have yet to subscribe to EVERYDAY BUDDHIST you can follow the links below. -IHG

**SUBSCRIBE FOR \$10/MONTH**

**SUBSCRIBE FOR \$95/YEAR**

**VISIT WEBSITE**

## 2021 DECEMBER SHOTSUKI HOYO

The December Shotsuki Hoyo Memorial Service will honor the memory of those listed below who passed away in the month of December. This service will be combined with the Joint Memorial Service on Saturday, December 11, 2021, at 10AM and will be livestreamed on the Betsuin YouTube channel: <http://www.youtube.com/seattlebuddhisttemple>

Aoki, Takao	Kawafune, Hisami	Nakamura, Lucile	Tachiyama, Misayo
Aoyama, Yoshiko	Kawahara, Masao	Nakamura, Sakae	Takahashi, Masao
Araki, Nisaku	Kawasaki, Meriko	Nakata, Hanako	Takano, Komaji
Asai, Daisaku	Kawasaki, Yoshiko	Nakatani, Roy	Takenaga, Misao
Bovee, June	Kido, Tom	Nakauye, Uichiro	Tamada, Junichi
Chen, Frank	Kikuchi, Mitsuyoshi	Nishimoto, Hideko	Tani, Shigemi
Deguchi, Seiichi	Kinomoto, Yutaka	Nishimura, Haruko	Tanigawa, Frank
Ding, Joyce	Kobuki, Haruko	Nose, James	Taniguchi, Saye
Doi, Mary	Kogita, Kaylin	Oba, George	Taniguchi, Toshio
Donchak, Kimiko	Kokita, Kaoru	Obata, Henry	Tanji, Shizuko
Fujihira, Teruko	Komoto, Amie	Okada, Bart	Tomoguchi, Ayako
Fujioka, Takeno	Komoto, Kimiyo	Okada, Fumiko	Tosaya, Kazuko
Fujishima, Sono	Komura, Elizabeth 'Betty'	Okada, Yoshito	Tsubouchi, Kinko
Fujita, Brian	Kondo, Miyoko	Oki, Shizuno	Tsuchida, Florence
Fujita, Tomiko	Koura, Arthur	Ono, Koshun	Tsuchida, Vicki
Furuta, Sumiko	Koura, Florence	Ono, Shigeru	Tsutamaki, Kanichi
Furuta, Yoshio	Kuramoto, Masayo	Ono, Wayne	Tsutsumi, Tamotsu
Hale, Don	Kyono, Motoji	Osaki, Aiki	Utsunomiya, Setsuko
Hamano, Gladys	Maekawa, Shojiro	Ozaki, Luisa	Uyeda, Henry
Hamasaki, Harry	Mano, Akira	Ozeki, Kikuo	Uyeda, Paul
Harada, Kameichi	Maruhashi, Mary	Saito, Yasu	Uyeda, Ryu
Harada, Roger	Masuda, Kika	Sakaguchi, Takeshi	Wakayama, Helen
Harrison, Roy	Masuda, Rose	Sakai, Nobuyo	Watanabe, Eitaro
Hata, Cheryl	Matsuda, Misu	Sakamoto, Kiyo	Watanabe, George
Hibino, Haruko	Matsui, Takashi	Sakamoto, Noboru	Watanabe, Ihei
Hirasawa, Walter	Matsumura, Sue	Sako, Sawayo	Watanabe, Shiro
Horikoshi, Fusano	Miura, Yoshio	Sapp, Madelyn	Watanabe, Yoshiye
Huynh, Thai	Miyamoto, Fusako	Shibata, Fusaye	Yamaguchi, Tomi
Ideta, Akio	Miyata, Mikiko	Shigaya, Harry	Yamamoto, George
Imanishi, Shigeo	Miyatake, Robert/Steven	Shigaya, Ken	Yamamoto, Noe
Inouye, Isamu	Miyoshi, Yoshitaro	Shigeno, Kimi	Yamane, Amy
Ishii, Setsunosuke	Mizuhara, Kiyoshi	Shimizu, Sengo	Yamane, Kōzō
Iwamoto, Yoshito	Mizumori, George	Shinsato, Yoshinori	Yamane, Toku
Izumi, Norio	Mizumoto, Choichi	Shiota, Yoshio	Yamashita, Goroku
Jinda, Iyo	Mori, Aiko	Simpson, Nellie	Yamauchi, Betty
Jinguji, Masayo	Mori, Takao	Suda, Sumiko	Yasuda, Satoshi
Kajiwara, Tadashi	Moriguchi, Akira	Suetsugu, Wayne	Yasui, Sumi
Kano, Masuko	Morita, Mary	Sugita, Reiko	Yokota, Tatsue
Kashima, Yoshiko	Moriya, Kenji	Sumida, Florence	Yoshida, Kiyoko
Kashiwa, Herbert	Moriya, Mary	Sumida, Koichi	Yoshida, Umeno
Katayama, Chikuji	Murakami, Jeff	Sumimoto, Shizuyo	Yuki, Koma
Kato, Mie	Nabeshima, Yoshikuni	Sumita, Sam	
Kato, Shigeo	Naganawa, Yei	Sunohara, Hiroko	
Kato, Tony	Nakagawa, Hanako	Suyematsu, Toshio	

## 2022 JANUARY SHOTSUKI HOYO

The January Shotsuki Hoyo Memorial Service will honor the memory of those listed below who passed away in the month of January. This service will be combined with the Joint Memorial Service on Saturday, January 8, 2022, at 10AM and will be livestreamed on the Betsuin YouTube channel: <http://www.youtube.com/seattlebuddhisttemple>

Abe, Toshiko	Ise, Hal	Miyahara, Takashi (Tak)	Taki, Takako
Adachi, Misako	Ishii, Michika	Mizuta, Yosaburo	Tamaki, Michiyo
Akada, Sae	Ishikawa, Haruko	Morimoto, Toshiyuki	Tamura, Kugayo
Akada, Tatsuo	Ishikawa, Randall	Morinaga, Taiji	Tamura, Misako
Akiyoshi, Jane	Iwago, Steve	Morishima, Haruno	Tanabe, Daichi
Amano, Mitsusaburo	Iwamoto, Kimiko	Murakami, Shinayo	Tanabe, Hatsuye
Aoki, Hideko	Iwamoto, Toshiyuki	Nagamatsu, Kenzo	Tanaka, Kuichi
Aoyama, Naojiro	Iwamoto, Yasu	Nagata, Hana	Tanaka, Nami
Arai, Nobu	Jinka, Shinobu	Nakano, Shiku	Taniguchi, Hitoshi
Aramaki, Akira	Kagimoto, Motonobu	Nakashima, Hiroshi	Tanino, Etsuko
Arita, Koichi	Kakimoto, Teshin	Nakata, Ohisa	Tanino, Mitsumasa
Asaba, Shuzo	Kamimae, Kametaro	Nakauye, Kimiyo	Tateishi, Tsurutaro
Asayama, Suelo	Kanzaki, Toshie	Natsuhara, Terrie	Tatsukawa, Asako
Baer, Shizuko	Kase, Tsurunosuke	Nishimura, Hiroyuki	Tatsukawa, Junko
Fujikawa, Masao	Kato, Doris	Nishimura, Miyoshi	Tatsukawa, Mitsuo
Fujino, Hiroshi	Kawahara, Harry	Nishiyori, Fuyo	Tatsukawa, Motoko
Fujino, Kiku	Kawamura, Jyutaro	Nitta, Masaru	Terada, Harry
Fujioka, Russell	Kikuchi, Yuri	Nitta, Masaye	Tokita, Elsie
Fujita, Katherine	Kinomoto, May	Nogaki, Kenji	Tomita, Paul
Fujita, Kenneth	Kinomoto, Suye	Ogami, Kenneth	Tomita, Theodore
Fujita, Sam	Kodani, Natsumi	Ogata, Yasuji	Tsuji, Masao
Fujita, Tad	Kokita, Someko	Oishi, Tatsue	Tsukui, Jeanette
Fujita, Taiko	Kosai, Aizō	Okada, Tetsuo	Tsunehara, Mary
Gargiulo, Michiyo	Koyama, Miyoko	Okamoto, Sugie	Uyeda, Ayako
Haag, Maryo	Kozu, Fusa	Okayama, Chiyoko	Uyeminami, Kikuji
Ham, Marshall	Kubo, Helen	Onodera, Michiko	Wada, Guy
Hamasaki, Toki	Kubo, Masami	Onouye, Doris	Wright, Sachiko
Haraguchi, Kimie	Kubo, Sukesaku	Osaki, George	Yagi, Kiri
Hasegawa, Tom	Kubota, Akira	Oshiro, Jean	Yamada, Akira
Hashiguchi, Takako	Kubota, Yone	Otsuka, Jeanette	Yamada, Chiyoko
Hashimawari, Iseyo	Kui, Gan Lung	Piencykoski, Kazuye	Yamada, Dan
Hata, Yoshio	Kuranishi, Tsuruno	Saito, Akira	Yamada, Henry
Hattori, Agnes	Kurimoto, Muneyuki	Sakaguchi, Mieko	Yamaguchi, Manichi
Hayashi, Roy	Kurose, Kaemon	Sakauchi, Yana	Yamaguchi, Tatsuo
Heyamoto, Asayo	Kusakabe, William	Sakuma, George	Yamamura, Tatsuko
Higashi, Michael	Lindbloom, Marion	Sakuma, Masao	Yasunaga, Fred
Hino, Frank	Mafune, Kura	Seko, Amy	Yasunobu, Chiyono
Hirabayashi, Tsuneko	Mamiya, Masami	Sera, Kiyohiko	Yatagai, Chiyono
Hirai, Shizuko	Masunaga, Taki	Seto, Yoneko	Yee / Ma, Kan
Hirasawa, Amy	Matsuda, Kiyoshi	Shigihara, Yone	Yoda, Yoshiji
Hiroo, Kanroku	Matsuda, Tami	Shimizu, Fusako	Yoneda, Yumi
Hiroshige, Yoshiko	Matsudaira, Tsuneaki	Shimizu, Noboru	Yoshida, Frank
Hirota, Irene	Matsui, Kame	Soejima, Gregory	Yoshida, Toshiye
Horita, Tomio	Matsumoto, Frank	Sumida, Wataru	Yoshida, Yoso
Ikeda, Tsuru	Matsumura, Kaoru	Sumioka, Shigeo	Yoshimoto, Hanaye
Ikemura, Tomoko	Mayeda, Tamo	Tai, Henry	Yoshinaka, Kazuo
Imanishi, Umajiro	Meadows, Aurora	Takato, Hideo	Yoshino, Kenjiro
Inaba, Fumiko	Minato, George	Taketa, Fred	
Inoue, Masami	Mito, Hiroshi	Taketa, George	

DECEMBER 2021 BETSUIN SCHEDULE

Sunday	Monday	Tuesday	Wednesday	Thursday	Friday	Saturday
<b>JANUARY 2022 SPECIAL EVENTS</b>						
January 1 New Year's Day Service livestream			<b>1</b> 10 am Morning Service livestream	<b>2</b> 11 am Japanese Dharma Discussion on Zoom	<b>3</b> 10 am Japanese Play Group on Zoom	<b>4</b> 9:30 am Buddhist Book Study on Zoom
January 9 Virtual Betsuin New Year's Party			11 am Sutra Dialogue on Zoom	2 pm Nikkei Manor Service		
January 12-14 Goshoki Hoonko Services						
January 16 NW Hoonko Service, Betsuin Hoonko In-person Oshoko, Jr YBA Food Drive						
January 19 Hoonko Seminars: Rev Nobuo Miyaji, Japanese & Rev Jon Turner, English						
January 23 Betsuin Hoonko Service						
January 30 Lady Takeko Kujjo/Lady Yoshiko Ohtani Memorial Service, Rev Cyndi Yasaki						
<b>5</b> 9 am Meditation on Zoom	<b>6</b> Rinban's day off	<b>7</b> Rinban's day off	<b>8</b> 10 am Morning Service livestream	<b>9</b> 10 am Japanese Play Group on Zoom	<b>10</b> 10 am Japanese Play Group on Zoom	<b>11</b> 10 am Shotsuki/Joint Memorial Service livestream
10 am SUNDAY SERVICE stream			11 am Sutra Dialogue on Zoom	11 am Japanese Dharma Discussion on Zoom		12 pm Gojikai Service on Zoom
11 am English Dharma Talk (Rinban)			6:30 pm BODHI DAY SEMINAR (English) Rev Kazuaki Nakata			2 pm Gagaku practice
11 am Japanese Dharma Talk (Rinban)						
Dharma Exchange on Zoom (Rev Irene Goto)						
11 am All Dharma School class on Zoom						
<b>12</b> 9 am Meditation on Zoom	<b>13</b> Rinban's day off	<b>14</b> Rinban's day off	<b>15</b> 10 am Morning Service livestream	<b>16</b> 10 am Shinran Shonin Service	<b>17</b> 10 am Japanese Play Group on Zoom	
10 am NW JOINT BODHI DAY SERVICE stream			11 am Sutra Dialogue on Zoom	11 am Japanese Dharma Discussion		
English (Rev Kerry Kiyohara, Makawao Hongwanji)						
Japanese (Rev Ryuhei Uyeno, Ryukoku University)						
11 am Dharma Exchange on Zoom (Rev Irene Goto)						
<b>19</b> 9 am Dharma School Board Meeting	<b>20</b> Rinban's day off	<b>21</b> Rinban's day off	<b>22</b> 10 am Morning Service CANCELED	<b>23</b> 11 am Japanese Dharma Discussion CANCELED	<b>24</b> 11 am Japanese Dharma Discussion	
9 am Meditation on Zoom			11 am Sutra Dialogue			
10 am SUNDAY SERVICE stream			11 am Merrill Gardens Renton			
English Dharma Talk (Rev Matt May)						
Japanese Dharma Talk (Rinban)						
11 am Dharma Exchange on Zoom (Rinban)						
<b>26</b> 9 am Meditation on Zoom	<b>27</b> Rinban's day off	<b>28</b> Rinban's day off	<b>29</b> 10 am Morning Service CANCELED	<b>30</b> 11 am Japanese Dharma Discussion CANCELED	<b>31</b> 12 pm Joya-e bell ringing (in person)	
10 am SUNDAY SERVICE livestream (No Dharma School)			11 am Sutra Dialogue CANCELED			
English Dharma Talk (Rinban)						
Japanese Dharma Talk (Rinban)						
11 am Dharma Exchange on Zoom (Rinban)	8 pm Newsletter deadline				7 pm New Year's Eve Service (Joya-e)	



**Seattle Buddhist Church**  
 1427 S Main Street  
 Seattle, WA 98144

**2021 December**  
*Wheel of the Sangha*  
**A Monthly Newsletter of**  
**Seattle Buddhist Church**

**EVERYDAY BUDDHIST:**  
 HTTPS://  
 WWW.EVERYDAYBUDDHIST.  
 ORG

**2021 FAMILY  
 MEMORIAL  
 SERVICE  
 SCHEDULE**

Year of Death  
 Service

2020  
 1st year memorial

2019  
 3rd year memorial

2015  
 7th year memorial

2009  
 13th year memorial

2005  
 17th year memorial

1997  
 25th year memorial

1989  
 33rd year memorial

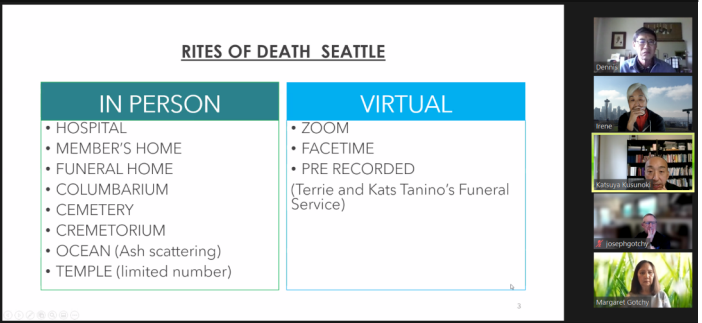
1972  
 50th year memorial

**Please call the Temple  
 office at (206) 329-0800  
 to schedule a service.**  
 - JN

**Dharma Exchange focused  
 on Memorial Services . . . .**

**RITEs OF DEATH SEATTLE**

IN PERSON	VIRTUAL
<ul style="list-style-type: none"> <li>• HOSPITAL</li> <li>• MEMBER'S HOME</li> <li>• FUNERAL HOME</li> <li>• COLUMBARIUM</li> <li>• CEMETERY</li> <li>• CREMATORIUM</li> <li>• OCEAN (Ash scattering)</li> <li>• TEMPLE (limited number)</li> </ul>	<ul style="list-style-type: none"> <li>• ZOOM</li> <li>• FACETIME</li> <li>• PRE RECORDED</li> </ul> <p>(Terrie and Kats Tanino's Funeral Service)</p>



...that have been conducted by Rimban Kusunoki during the pandemic lockdown. Rimban's presentation on November 7, 2021 reminded us to let our family members know our wishes for our last rites.  
 Submitted by Irene Goto

**10:00AM**  
**Live-stream Services**  
<https://youtube.com/seattlebuddhisttemple>

**December SCHEDULE**

**Wednesdays + 11:00 AM** Sutra Chanting & Dialogue via Zoom; **service & dialogue canceled on December 22, 29, 2021**

**Saturday, December 11, only**  
 Joint Memorial and Shōtsuki Hoyo  
 see p.14 and p. 15

**Sunday Services**  
 Virtual, Pre-recorded

**Dharma Exchange**  
 Every Sunday  
 via Zoom  
 11:00 - NOON

**Get the Zoom Link  
 by Registering at**

<https://us02web.zoom.us/j/84461212693>

**Contact Us**

**Seattle Betsuin  
 Buddhist Temple**  
 1427 S Main Street  
 Seattle, WA 98144

Phone: 206. 329.0800  
 Fax: (206) 329-3703  
 office @SeattleBetsuin.com  
**SeattleBetsuin.com**

**Office Hours**  
 Call for recorded  
 updates and for  
 emergencies

**Minister 24 hours**  
 206.779.2214

*Wheel of the Sangha* Editors  
 Irene Goto, English: newsletter@seattlebetsuin.com  
 Machiko Wada, Japanese: newsletter-jpn@seattlebetsuin.com  
 Deadline is the third Monday each month at 8PM