



Wheel of the Sangha

May 2021

Seattle Betsuin Buddhist Temple, A Shin Buddhist Temple,
Jodo Shinshu Nishi Hongwanji-ha

a monthly newsletter of Seattle Buddhist Church
Volume 41 Issue 5
online only

“The Motherly Ghost”

by Rimban Katsuya Kusunoki

UGUME NO YUREI

I would like to introduce a Japanese folk tale “UGUME NO YUREI (The motherly Ghost) which has been told at my family temple, Kogenji. May is the month of Mother’s Day. Please think about Love, Kindness, and Compassion through this story.

Long, long time ago, there was a candy shop in a small town called “Kojiya-machi” in Nagasaki city. One late summer afternoon, on a really muggy day, the candy shop’s owner was thinking, “Getting dark outside. It is time to close up the store.” Just at that time, he heard someone knock on the door. “Knock-knock, knock-knock.” “Ex...excuse me...” It was a woman’s voice. “Oh no! Such a late afternoon, who are you?” The owner opened the door a little bit. Just then, a pale faced

woman was dejectedly standing there. “I already closed the store today. What do you want?” he asked brusquely. “I am so sorry to bother you. I would like one-dollar worth of candy, please.” She said in a feeble voice with a Kyoto accent. “Okay. Okay. One-dollar worth of candy.” The owner reluctantly put the candies into the bag and gave it to her. Her hands touched his hand, and they were icy cold. The owner closed the door and grumbled, “She looked strange and weird. Who was she? Where is she from?” he said and

then he slipped into bed. However, the woman came to buy the candy the next night, and the following nights. On the seventh night, the woman came to the store again. She looked very sad and said, “I am sorry. I don’t have money anymore. Would you please give me a candy?” in a really faint voice. He felt sorry for her, so he gave her some candy. She was overjoyed and thanked him over and over again, and she went into the darkness towards the neighboring town, Tera-machi (temple town). “What happened to her? Her behavior was

continued on p. 2...



シアトル別院日本語法座 2021年04月18日

Rimban Kusunoki giving his Dharma Talk in Japanese on April 18, 2021

Join Seattle Betsuin's Virtual Programs

*Book Study, Meditation, p.8
Dharma Exchange, p. 9 See below on how to join virtually.*

Meditation Sundays
9:00AM Contact webmaster@seattlebetsuin for a link.

Seattle Betsuin Book Study will meet on Saturday, May 8, at 9:30AM. See information on p. 9.

To receive Zoom links to Buddhist Book Study and Dharma Exchange, email newsletter@seattlebetsuin.com and specify the group in the subject line. You will be emailed a link.

10:00AM Services: Sunday, Wednesday, & May 1 on YouTube.

Go to <https://youtube.com/seattlebuddhisttemple/>
Search “playlists” for past services.

Calendar: p. 20 and at SeattleBetsuin.com

...Rimban's Message continued from p. 1 They were so surprised and wrapped up the baby with a cloth, and they took it into the temple. The reverend's wife took the baby up in her arm and said.

"Where is she going?"

Just then, she passed through the Kogenji temple's gate, went up the stone steps, and turned left at the precincts of temple.

"It is really weird. I think it may possibly be...."

They kept chasing the mysterious woman. She went behind the Hondo (main hall) and disappeared into a grave.

"That's exactly....she was...a ghost..."

Everybody felt a shudder, and they ran away at full speed. Next day, the candy shop owner and the young men visited the Kogenji temple, and they explained to the resident minister about the story of last night. Then, they went to the graveside where the woman disappeared.

"Namamidabutsu, namamidabutsu...."

They were reciting the Nembutsu, and tilled the grave with a hoe; at that time,

"Mewl, mewl...."

What surprise it was! A new born baby was curled up on the mother's belly.

"Here is a baby!!!"

"The baby is still fine although it was under the ground."

"Reverend. This baby is still a new born, isn't it?"

"Countless wondrous events have happened in this world. However, I cannot believe that it actually happened here in Kogenji temple...."

"It is such a cute baby. You had grown up really well although you had eaten only the candies. Good baby, good baby."

The reverend researched that grave's owner. The woman died before she delivered her baby. However, the baby was born in the casket. Because she had strong will to raise her baby, she became a ghost, and she went to buy some candies instead of feeding her milk. Right away the resident minister found the baby's father. The minister told the father the wondrous story. The father took the baby home to raise it. The mother must feel glad and relief.

"It was very good. I did good deeds. Eventually I can sleep well tonight."

"It was good. It was good."

The candy shop owner and the young men rejoiced with each other.

A few nights later, Knock-knock....knock-knock.... It was a sound, which somebody was knocking on candy store's door.

"Excuse me....."

It was a woman's voice. It sounded familiar. The candy shop's owner was very surprised, and his heart stood still. He fearfully opened the door. The woman was standing there, just as he had suspected. However, the woman's expression was totally

different from before, and it was very gentle and happy.

"Thank you very much for your kindness. My baby is now raised by the father. I came to repay your favor tonight. What can I do for you?"

The candy shop owner thought for a short while and said.

"There is not enough water around here. We always suffer from drought. Can you help us?"

"Okay. Tomorrow early in the morning, please find this comb and dig that place. The water will gush out from that place. Thank you very, very much again for your kindness. Good-bye."

Then, she disappeared. The owner collapsed to the floor for fear. Next morning, the owner looked for the comb around there, and he finally found it. He cautiously picked up it. Then, he started to dig there. Just then, he heard the sound of water splash. The beautiful water gushed out in a steady flow.

"Wao!!!! The water sprang out!!"

The water sprang out our town Kojiya-machi. How grateful it is!!" The owner delighted and jumped. People made a splendid well there. It was called "YUREI (Ghost) well in Kojiya-machi."

Even through spells of dry weather, this well has never dried up. It supplied water not only for the neighboring people but also people who lived far away. Now, this well was filled, and it is still quietly at the side of a road in Kojiya-machi. Please go visit the back side of Kogenji temple. You can see the monument of this folktale.

The END

Share the Dharma

In a new “Share the Dharma” initiative we are asking Sangha members to invite friends and family to attend our upcoming May 16th Gotan-e Service on YouTube. After the service we will host a Dharma Exchange via Zoom where we will take time at the end to welcome any first-time attendees and answer any questions they may have.



Members can participate in several ways:

1. Personally invite someone you know who might be interested in watching a service. We will be sharing an email template to use to send to friends and family you would like to invite.
2. Like and share the Facebook Event about our Gotan-e Service from the Seattle Betsuin Facebook (<https://fb.me/e/3BwX09CPv>)
3. Like and Share our Instagram post about our Gotan-e Service (<https://www.instagram.com/seattlebetsuin/>)

Check the temple website for more information or feel free to contact communications@seattlebetsuin.com with any question.

Gassho,
Tyler Moriguchi



Tea Talk by Leanne Nishi-Wong

“Temple News”

Hanamatsuri - Thank you to the 170+ people who participated in the two-day, open house, kanbutsu event at the temple. It was the first in-person event, held in the hondo, since March of 2020. Even though interactions were brief, the excitement of seeing others was heartening. The Betsuin appreciates Ron Hamakawa and the Dharma School volunteers for making this event a special one.

Wisteria Park Bridge - The bridge has been cleaned, repaired, and painted by Lucca F. and his volunteer crew. Thank you to Lucca for choosing the Seattle Betsuin to donate his time, supplies and work party for his Eagle Scout Project. Appreciation to Craig Nakashima for overseeing this project on behalf of the Betsuin. Hope you get an opportunity to visit the park and see the refurbished bridge.

Vaccination Clinics - Wisteria View Housing and ICHS (International Community Health Services) have sponsored several clinics in the Betsuin gym. The clinics targeted 65+ year old individuals from the International District and surrounding neighborhood. The Betsuin is grateful for Wisteria Housing and ICHS, for their tireless efforts in vaccinating individuals, who have limited access to technology, interpreters, and local clinics.

Gotan-e – Shinran Shonin’s birthday will be celebrated at the Betsuin, this month. Please look for information on the participatory events, in your upcoming email newsletter blasts and temple website.

Thank you for your continued support of the Betsuin.

In Gassho, Leanne

“Outline of Shinran Shonin’s Teaching” with Dr. Nobuo Haneda

Date: Saturday, May 1
Time: 2:00 PM – 4:00 PM

Register in advance for this meeting using
the QR code below or go to
seattlebetsuin.com/upcomingevents



There is no fee to register, however donations are always appreciated! Donations can be made from the temple homepage

Please contact Seattle Betsuin Buddhist Temple if you have any questions.

E-mail: office@seattlebetsuin.com

Website: seattlebetsuin.com

Phone: 206-329-0800

Watch any time!

2021 Seattle Betsuin Hanamatsuri Service (premiered April 11)
Earth Day Music Service and EcoSangha Seminar (premiered April 18) on
[YouTube.com/SeattleBuddhistTemple](https://www.youtube.com/SeattleBuddhistTemple)

VIRTUAL ALL SANGHA MEMORIAL SERVICE **SENBOKAI-IN TSUITO HOYO**

Sunday, June 6, 2021, 10:00 AM

The annual **ALL SANGHA MEMORIAL SERVICE** will be streamed on the Betsuin YouTube channel on **Sunday, June 6, 2021, at 10AM**. This important service is dedicated to honoring the lives and contributions of members and friends of the temple who have gone before us.


During the All Sangha Memorial Service, photos of those being remembered will be shown. We invite families of the deceased to submit the name and a photo of their loved one to office@seattlebetsuin.com. Please limit the file size of photographs to 100KB and include your name and telephone number in your e-mail message. Photos submitted for previous year’s services will be shown again unless the office is notified. If no photo is available, you may submit just the person’s name to the same e-mail address, and it will be shown during the service.

The deadline for submission of photos and names is May 30th.

We cannot guarantee that photos/names received after the deadline will be included.

In Gassho,, *Seattle Betsuin Buddhist Temple*, (206) 329-0800

-JN



**“Come celebrate Gotan-e
Shinran Shonin’s birthday
at
Seattle Betsuin
Sunday, May 16, 2021 1:00 - 3:00 pm”**

Shinran Shonin is the founder of Jodo Shinshu Buddhism.

***This will be a special occasion for us to gather safely, outside,
in front of Memorial Hall
to say goodbye to the wooden Shinran Shonin statue
which will be removed due to deteriorating conditions.***

***In addition,
there will be incense burners in front of the Shinran Shonin statue
in Wisteria Plaza Park.***

***Come see the newly refurbished bridge,
completed this Spring as an Eagle Scout project!***

Family treat bags will be provided to attendees.

***All are welcome to attend this special event
to celebrate the birth of Shinran Shonin!***

***Please mask up when you come
and stay home if you are not feeling well.***

submitted by Alex Sakamoto

Musical Notes by Kemi Nakabayashi

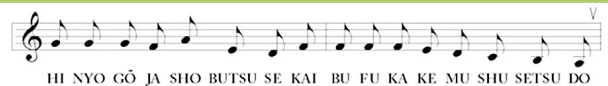
In the spring of 2020 when we first entered the Covid-19 pandemic with much uncertainty about the virus itself and the impact on our lives, the Seattle Betsuin service team scrambled week to week to produce our online services. We are so fortunate to have already had experience with hosting services on our Seattle Betsuin YouTube channel. Checking out what other temples began to do last year, there has been great variability. With the creation of the BCA Music Committee, one of the greatest challenges has been to support the temples which do not have a core group of service musicians, even before the pandemic. We are slowly making progress in that regard through sharing recordings on the BCA website and hope to expand music resources over time. For our Seattle Betsuin services, Rinban Kusunoki asked us to improve further on what we were able to do with online service programming last year. From the music perspective, we appreciate the participation of Hieu for the Hanamatsuri service and the ability to continue to use recordings by Macy, Misa, and Maya along with Kristy. How happy I am also that we were able to present the Earth Day service last month again as a music service! Rev. Castro's Dharma message was presented both for our service as well as for the Earth Day service of Hawaii Betsuin, chaired by David Atcheson. Our Earth Day gatha

Precious Earth was featured also for both online services. The Earth Day Music Service can still be viewed on the Seattle Betsuin YouTube channel as well as an excellent Eco Sangha seminar also pre-



sented that afternoon. This month to support Gotan-E services and various memorial services, the BCA website will feature a few new recordings to replace the Hanamatsuri gathas on the Chanting and Music webpage. Our Seattle Betsuin Music webpage will be used to compliment the music recordings by featuring recordings from the ***Sing Namō Amida Butsu*** gatha book.

Palo Alto Buddhist Temple has been offering a weekly Sing Along over Zoom on Thursday evenings. On April 22, the designated baseball team of the week was the Seattle Mariners with *Louie Louie*, the traditional 7th inning stretch song included along with a video of Ichiro's greatest moments. For the Earth Day theme, participants were treated to our Northwest-adapted lyrics of *This Land is Your Land*, performed by Mas Tamekuni. How wonderful to hear that rendition again! Thank you, Mas, for sharing your talent with our Dharma friends from across BCA. Please contact Kemi Nakabayashi at nakabayashi.bcamusic@gmail.com if you are interested in details of the PABT Zoom Sing Along or other BCA Music Committee efforts.



Seattle Betsuin Buddhist Women's Association

Submitted by Janie Okawa

SBBWA's Mission is to cultivate religious awareness as Jodo Shinshu Buddhist women and promote fellowship among its members; to serve and support the Seattle Betsuin, and contribute services to the welfare of the community.

On April 18th SBBWA welcomed our new members, Rose Kishi, Jeanne Deavers, Katherine Brownlee, and Steph Ojima! So excited to have you join us!

Temple Pantry cleaning and sorting - by Kanako
The pantry was thoroughly gone through. Dennis S., Suzuko T., Shizue K., Ritsuko K., Charlene Y. and myself worked a few hours on a Saturday. A list of items to be replaced was sent to Leanne Nishi-Wong, our Temple president. It was also requested that the pantry area get a complete upgrade.



- The Activities Committee has another online class with Jeff Yamane, called **No Knead Bread Making**. Thank you Fran T. and Jeff for making this happen!
- Palo Alto Sing-along every Thursday from 7-8pm featuring old (and newer) favorites plus Japanese songs.

- Tomodachi Friend Birthday project. Let Margaret G. know the month of your birthday.
- SBBWA usually sponsors a **Walk for Rice team** to raise money for ACRS, **Buddhist Womens Association SBBWA**. Because of the pandemic this has become a virtual event. (see their website for information) *ACRS has collaborated with dozens of community groups and volunteers to transform our food bank into a complex food home delivery operation. ACRS now provides 2,250 bags of groceries and 2,000 culturally familiar meals to homebound seniors and people in need each week. Your fund-raising efforts help end food scarcity among Asian and Pacific Islanders.*

Please consider making supporting this cause at **Make a Donation**: Register and give online Their website is: walkforrice.org



upcoming events:

- May 2nd - Board of Directors' meeting via Zoom at 12 noon
- May 7th - NWD BWA meeting via Zoom



[Dennis Shibata and Charlene Yoritsune sorting and taking inventory.]

Shōtsuki Hoyo Memorial will be observed on May 1 and June 12 at 10:00AM, live-streamed at Saturday Joint Memorial Service. The names of those who will be remembered are listed on pp. 18, 19. Log on to <http://www.youtube.com/seattlebuddhisttemple> to join virtually.

Seattle Betsuin

Sunday Dharma Exchange

11:00AM - 11:30AM

Zoom

Every Sunday!

The Zoom link appears in our *Weekly E-Newsletter* -

Sign up for our Weekly E-Newsletter at:

<https://lp.constantcontactpages.com/su/rjidJqn/betsuinweekly>

2021 Topics of Discussion:

May 2 Irene on Home Altar Adoption Program

May 9 Rev. Katsu on *Tokudo/Kyoshi /Kaikyoshi*

May 16 Gail Kaminishi on Mongolia & Maitreya Charity

May 23 Nina and Paul on Education and Research Dept.

May 30 Rev. Katsu on Buddhism 101

IG 4.22.2021

WE'RE KEEPING OUR LINKS BRIGHT AND STRONG



YBA News submitted by Grace Tazuma

Five Seattle Jr. YBA members participated in the Coast District YBL Conference in late March.

This year's theme was "Toy Story - You've Got a Friend in Me".

Our temple youth along with high school students from 14 other temples enjoyed an afternoon of interactive workshops and activities via Zoom.

The conference opened with a Q&A session with Ally Maki, the voice of Giggles McDimples in Toy Story 4. Ally is the first Asian-American in the Toy Story franchise.

The guest speaker was Rev. Candice Shibata from the Buddhist Church of Stockton.

We also enjoyed a message from Bishop Rev. Marvin Harada.

Meditation meets each Sunday mornings at 9:00AM—9:45AM. We open with SanBujo, Sit in Gratitude Meditation for 20 minutes, chant Nembutsu and close with discussion. Please join us on Zoom! Email newsletter@seattlebetsuin.com and specify SBC Meditation to receive the link.

Buddhist Book Study Our next meeting will take place at 9:30-11:00am on Saturday, May 8, 2021. We will continue our discussion on the transcript of a talk by Kenneth Tanaka at the Dr. Taitetsu Unno Memorial Lecture: *Revisioning Shin Buddhist Teachings for Today*. Please contact Wayne Suyenaga or newsletter@seattlebetsuin.com for the transcript and the Zoom link to the meeting.

Submitted by Wayne Suyenaga and Irene Goto

Receive a digital copy of the Seattle Betsuin Monthly Newsletter by clicking and leaving your email at this link: [SBBT Monthly Newsletter](#)

BCA Connect

(Buddhist Churches of America)

Sign up! The BCA newsletter is where you can find all the temples' live-streams, workshops, and messages from temples across the country.

<https://www.buddhistchurchesofamerica.org/connect/>

THE SBC MEMBERSHIP COMMITTEE...

We would like to “thank” the following for contributing their **2021** sustaining membership dues - the basic dues towards Temple maintenance/operations (i.e.- remodel of ‘flower room’ in the Memorial Hall) and operations and programs (i.e. – Live Streaming services; Virtual Sunday Services; lecture series, meditation service, book study group). The minimum for individual membership is \$400 (for under 70 years of age), and \$350 (for 70 years of age and over).

Don Castro, Sandra Cross, Yoko Hamanaka, Roy & Deanna Ikegami, Janet Kosai, Masako Kubo, Haruko Mamiya, Sato & Darlene Shimizu, Esther Sugai, Kiyo Takashima, Mas & Frances Tamekuni, Grace Tazuma, Miyoko Tazuma, Sharyl Yamamoto

We’d like to ‘Welcome’ **ESTHER SUGAI** as a new member to our Sangha

Compiled by Howard, Joan, Pauline & Steph)

Seattle Buddhist Study Center hosted on March 25: *Huayan Buddhism* by Prof Erik Hammerstrom, PhD



One Huayan Idea

- How to describe a thing without negation? Without attachment?
- Six Characteristics 六相 of its parts
 - 1. Unity 總
 - 2. Separateness 別
 - 3. Identity 同
 - 4. Difference 異
 - 5. Integration 成
 - 6. Disintegration 壞



The U.S. in Six Characteristics

- 1. Unity 總: the U.S. as a whole
- 2. Separateness 別: its parts (states, people)
- 3. Identity 同: the commonalities of its people
- 4. Difference 異: the differences between them
- 5. Integration 成: our tendencies to come together
- 6. Disintegration 壞: our tendencies toward divisiveness
- Together the U.S. is an interfused whole 圓融

and on April 18: EcoSangha’s *In Touch with the Earth* with speakers, Rev Don Castro, Prof Jason Wirth, PhD; Wayne Suyenaga, PhD; Josh McKinney on Climate Anxiety, Emily Ko on Climate Change and Racism, Emi Nakashima on Fast Fashion, and Koki Atcheson on Climate Justice.

“Gross Earth Happiness is the result of us giving ourselves over to the Buddha Way and Other Power.” Jason Wirth



Climate change, fossil fuels and a Buddhist view

Wayne Suynaga



The Seattle Betsuin Gratefully Acknowledges The Following Donations 2021 March - April

Funeral / Memorial / Nokotsudo:

	<u>Given by:</u>
Nokotsudo for Ricky Hara	\$ 300.00 Reiko Hara
Nokotsudo for Masayoshi Kosai	\$ 300.00 Hirokoo Janet Kosai
Michiko Morikubo – In Memory of	\$ 300.00 Yukio & Karen Morikubo
Nokotsudo for Sachiko Ozeki	\$ 300.00 Connie Ozeki-Chinn
Sachiko Ozeki – In Memory of	\$ 200.00 Connie Ozeki-Chinn
Douglas Bacon – In Memory of	\$ 133.00 Mariko Bacon
Masayoshi Kubo – In Memory of	\$ 100.00 Masako Kubo
Nokotsudo	\$ 100.00 Grace Tazuma
Chieko Kubota - In Memory of	\$ 100.00 Steven Kubota
Osamu Okumura – In Memory of	\$ 50.00 James Okumura
Yoshiko Okumura – In Memory of	\$ 50.00 James Okumura

In Memory of:

Given by:

Akira Kishi	Suzanne Fujinari; Rose Kishi
Chieko Kubota	James & Tomiko Zumoto
Thomas Inori Nakata	Peggy Tanemura
Yasumi Osako	Connie Ozeki-Chinn
Kenneth Shigaya	Mary Katayama; Margaret Teramoto

Endowment: Grace Tazuma & Bruce Brundige

General Donations:

Donor:

For:

Calvin & Yvette Terada	Service Book
Anonymous	Service Book
Gregory & Catherine Anne Oxrieder	Collected Works of Shinran
Dennis Yamashita & Elaine Aoki-	Collected Works of Shinran
Patricia Bobrow	For "Suh" Book
Akemi Ishida	General Donation
John Fujioka	Appreciation for Support of Covid-19 Vaccine Pop-up on 4/2/2021
Michael Suguro	General Donation
Irene Goto	General Donation
Michiko Taketa	General Donation
Marcia Takamura	General Donation
Cyrus Honmyo & Mae Chin-	General Donation – Boeing YourCause
Brian Kaku	General Donation– Boeing YourCause
Robert Hamatani	General Donation– Boeing YourCause
Kelly Kuwahara	General Donation– Boeing YourCause

continued on p. 12....

...Donations continued from p. 10

Lindsey Luttmmer Donation for Salmon Dinner Fund Raiser
Kiyoko Takashima Donation for Salmon Dinner Fund Raiser
Lani Carpenter Donation for Salmon Dinner Fund Raiser

Special Services

All Sangha Memorial: Jay Taylor

Ho'Onko: Sue Fujino; Irene Goto; Morikubo, Yukio & Karen; Pauline Sakuma

Spring Ohigan: Bobrow, Patricia; Fujii, Aiko; Fujino, Suteko (Sue); Habu, Gordon & Mae Yamasaki -; Harada, Setsuko; Kato, Nina Tomita -; Keltner, Marc & Janice; Ko, Jeffrey & Tina Zumoto -; Kojima, Esther; Kumasaka, Lisa; Mano, George & Irene; Morikubo, Yukio & Karen; Nagai, Ernest & Sanaye (Sunnie); Parke, Troy & Mayumi Terada -; Sako, Masako; Sakuma, Pauline; Shimada, Shirley; Shintaku, Frances; Tanemura, Peggy; Terada, Calvin J. & Yvette; Terada, Kayoko; Terada, Ronald & Suzuko; Teramoto, Margaret; Tomita, Paul & Mabel; Watanabe, Henry & Christy; Wong, Leanne Nishi -; Yanari, Yoko

Hanamatsuri: Akira, Donald & Karen; Aoki-Kramer, Carol; Asaba, Lauren; Asaba, Marian; Baba, Janet; Chinn, Connie Ozeki -; Deguchi, Aya (Jean); Fujii, Aiko; Fujinari, Suzanne; Fujino, Suteko (Sue); Fukeda, Toshiko; Goshu, Kazumi (Janice); Goto, Irene; Habu, Gordon & Mae Yamasaki -; Hale, Ellen; Hanada, Peggy; Hara, Reiko; Harada, Setsuko; Hasegawa, Kathy; Hikida, Mary; Hirata, Michiko; Huh, Jamie; Ichikawa, Satoru & Grace; Ikegami, Roy & Deanna; Ito, Yaeko; Jacobs, Loraine; Kakiuchi, George & Kayoko; Kaku, Dale & Shizue; Kaminishi, Gail; Kaneta, Miyoko; Kashima, Tetsuden & Cecilia Kanako; Kashiwa, Ann T.; Kato, Nina Tomita -; Kawahara, Ritsuko; Keltner, Marc & Janice; ;Kishi, Rose; Ko, Jeffrey & Tina Zumoto -; Kodagoda, Kimiko; Kojima, Esther; Kumasaka, Lisa; Kunihiro, M. Carolyn; Kuramoto, Wayne; Mano, Andrea; Mano, George & Irene; Mano, Mariko; Mar, Sibyl; Mayeda, Duane & Ann; Mayeda, Julie; Miyata, Tetsuo & Linda; Mizumori, Sheri; Mori, Paul Bruce & Teresa; Morikubo, Yukio & Karen; Naemura, Joseph & Janie Okawa; Nagai, Ernest & Sanaye (Sunnie); Nakamura, Yoshio & Judith; Nakano, Craig & Joan; Nakano, Junko; Namekata, Tsukasa & Keiko; Nishizaki, Mabel; Norton, Jim & Kemi Nakabayashi; Okada, Barry & Marlene; Oye, Patricia; Parke, Troy & Mayumi Terada -; Saito, Irene; Sako, Masako; Sakuma, Pauline; Seko, Robert; Shibata, Dennis M.; Shimada, Shirley; Shimbo, Ben & Etsu; Shimizu, Sato & Darlene; Shintaku, Frances; Suguro, Nori; Suyenaga, Wayne; Suzaka, Gail; Tahara, Masaru & Anna; Takashima, Kiyoko; Taketa, Sonoe; Takemura, Yoshiaki & Naomi; Tamekuni, Masao & Frances; Tanabe, Ilene Kawahara -; Tanemura, Kevin; Tanemura, Peggy; Taniguchi, Theodore & Akico; Tazuma, Grace; Tazuma, Miyoko; Terada, Calvin J. & Yvette; Terada, Kayoko; Terada, Ronald & Suzuko; Teramoto, Margaret; Teramoto, Stuart; Tosaya, Gary & Julianne; Uchida, Sam & Masako; Uyenishi, Tazuko; Uyenishi, Tazuko; Wada, Machiko; Watanabe, Henry & Christy; Wong, Leanne Nishi -; Yabuki, Akiko; Yamane, Jeffrey & Susan; Yamashita, Dennis & Elaine Aoki -; Yanari, Yoko; Yee, Fukuyo; Yokoyama, Kevin & Kari Ann; Yoritsune, Charlene M.; Yoshida, Fuyo; Yoshimi, Crystal; Yutani, Nobuo; Zumoto, James & Tomiko

Hatsubon/Obon: Nicole Filler **Nirvana Day:** Morikubo, Yukio & Karen

Dharma School News

Submitted by Joyce Tsuji

Many thanks to the Sangha members who decorated the beautiful hanamido and coordinated the socially distanced Hanamatsuri kanbutsu event. We hope the treat bags were enjoyed by those who visited.



Classroom Reports

Pre K/K Class Students were given a booklet created by JCCCW about what people in Japan do in the spring. Because Jodo Shinshu originated in Japan, some of the same customs in the booklet are followed at our temple. Students were asked to complete one of the spring time activities. To celebrate Hanamatsuri, the children made their own Hanamido. They colored a baby Buddha and placed it inside and then decorated it with flower stickers. They were all

very creative with their decorations and each student made a beautiful Hanamido. The students also learned about Earth Day and how they can do their part in saving the Earth. A coloring book was mailed to them as well as an Earth Day crown that they could make and wear.

3/4/5 Class Our 3/4/5 class read and reviewed the birth of Sakyamuni Buddha and the importance and meaning of Hanamatsuri. We talked about the hanamido and shared a virtual Kanbutsu for those who were unable to attend the all-sangha kanbutsu at the temple. To acknowledge Earth Day, we read a Buddhist recycling story and brainstormed ways how we can commit to do our part to reduce, recycle, reuse and rethink. We learned some important facts about waste, recycling and composting through the King County Green Quiz, and then enjoyed running around our houses gathering items during our Earth Day Scavenger Hunt.

SEATTLE BETSUIN BUDDHIST TEMPLE

Practicing in the Jodo Shinshu Tradition

- Wednesday chanting, sutra study, and dialogue led by Rimban Kusunoki. See "Full Calendar" on <https://seattlebetsuin.com> and email webmaster@seattlebetsuin.com for meeting link.
- Seattle Betsuin Book Study meets Saturday morning once per month. Email webmaster@seattlebetsuin.com for meeting link.
- Sitting in Gratitude Meditation meets Sunday mornings at 9:00AM. Email webmaster@seattlebetsuin.com for meeting link.
- Seattle Betsuin YouTube Channel for live-streamed and recorded Sunday and weekday morning services: <https://www.youtube.com/seattlebuddhisttemple> and see Play Lists.



Podcast by

Rev. Takashi Miyaji <https://rdtakam.podbean.com/> or



<https://podcasts.apple.com/us/podcast/no-doubt-a-shin-buddhist-approach/id1511351502>

Podcast on Oakland Buddha statue



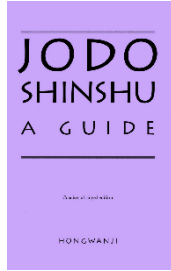
<https://ohthepodcastsyoullgo.wordpress.com/2017/11/16/oakland-buddha-statue/>

- **PACIFIC WORLD** Journal of the Institute of Buddhist Studies: <https://pwj.shin-ibs.edu/> Issues of the Pacific World Journal from 1980's to current. All the articles can be downloaded in pdf. Recent issues are more specialized but some in the 1980s were directed to general audience but still of interest.

- **MURYOKO** 'Infinite Light'



Journal of Shin Buddhism (main articles): <http://nembutsu.info/contents.htm> This is from the Australian Jodo Shin group.

-  **JODO SHINSHU A GUIDE** by HONGWANJI. Jodo Shinshu: A Guide is available as a [PDF on the BCA website](#). BCA stands for Buddhist Churches of America. This abridged edition provides an overview of Buddhism, Shinran Shonin, and the Jodo Shinshu teaching. <https://www.buddhistchurchesofamerica.org/jodo-shinshu-a-guide/>



Free video lectures offered by the Center for Buddhist Education
For upcoming programs:

<https://www.buddhistchurchesofamerica.org/center-for-buddhist-education/> For previous programs and play lists: <https://www.youtube.com/c/BCACenterforBuddhistEducation/videos>



EVERYDAY BUDDHIST

offers courses appealing

to newcomers and experienced students. When you subscribe for \$95 per year (or \$10 per month) you get unlimited access to 12 NEW Courses and support our mission to share contemporary Shin Buddhist practices for everyday life. <https://www.everydaybuddhist.org>



Young Buddhist Editorial

is dedicated to providing a platform for the expression of young Buddhists and a safe space where such young Buddhists can foster growth, community and interconnectedness while creating

a dialogue between young Buddhists and other generations of Buddhists. Articles, artwork, and workshops:

<https://www.youngbuddhisteditorial.com/>

###



2021 CBE Seminars Online For All SUMMER: JUNE ~ AUGUST

All events listed in Pacific Time - Check your local time

<p>SATURDAY JUNE 19 *11 am - 1 pm REGISTER ONLINE</p>	<p>EMBRACED AND NEVER ABANDONED: JODO SHINSHU AND LGBTQ+ Rev. Ko'e A. Umezu West Los Angeles Buddhist Temple</p>	 Rev. Umezu 
<p>SATURDAY JUNE 26 *11 AM - 1 PM REGISTER ONLINE</p>	<p>KINNARA: THE ROOTS OF TAIKO IN THE US Discussion with Rev. Masao Kodani, BCA Minister Emeritus, and Johnny Mori & other members of Kinnara Taiko Moderator: Rev. Jerry Hirano, CBE Director</p>	 Rev. Kodani  Johnny Mori
<p>SATURDAY JULY 3 *11 AM - 1 PM REGISTER ONLINE</p>	<p>SHINSHU AND CHRISTIANITY Rev. David Quirke-Thornton Shin Buddhist Fellowship, United Kingdom</p>	 Rev. Quirke-Thornton 
<p>SATURDAY JULY 24 *11 AM - 1 PM REGISTER ONLINE</p>	<p>CREATING INCLUSIVE SANGHAS: WORKING COMPASSIONATELY WITH OUR THOUGHTS & ASSUMPTIONS Mushim Patricia Ikeda East Bay Meditation Center Rev. Harry Bridge Buddhist Church of Oakland</p>	 Mushim Ikeda  Rev. Bridge
<p>SATURDAY AUGUST 7 *11 AM - 1 PM REGISTER ONLINE</p>	<p>THE ESSENCE OF THE THREE PURE LAND SUTRAS & HOW WE CHANT THEM Rev. Kiyonobu Kuwahara Berkeley Buddhist Temple Rinban Katsuya Kusunoki Seattle Betsuin Buddhist Temple</p>	 Rev. Kuwahara  Rev. Kusunoki
<p>SATURDAY AUGUST 21 *11 AM - 1 PM REGISTER ONLINE</p> <p>(3-25)</p>	<p>RENNYO'S CONTRIBUTION TO HONGWANJI THOUGHT Rev. Dr. Mutsumi Wondra Orange County Buddhist Church</p>	 Rennyō Shōnin  Rev. Wondra

2021 BYR: VIRTUAL SUMMER PROGRAM

For High School Age Youth

July 12 - 16, 2021 7pm - 10pm (PST)



Attend online sessions with BCA
Ministers and Instructors
Make new lifelong friends
Learn about Buddhism
Register early space is limited

\$30 REGISTRATION DUE BY JUNE 14, 2021

<https://bit.ly/3ckC9r7>

questions: bkmizushima@bcahq.org



Walking the Path

The EVERYDAY BUDDHIST Blog

Invitation to a Spiritual Journey



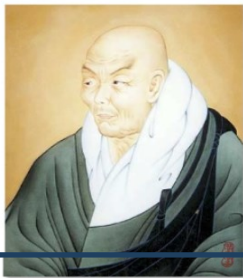
Rev. Dr. Mutsumi Wondra
26 April, 2021



We sometimes experience the life questions. It came to me in my early 40's when my mother passed away. What is "living"? That was my question. People may have encountered similar questions particularly under the current pandemic situation.



Shinran (1173-1263) is the founder of Jodo Shinshu, called Shin Buddhism in the West. He was born in medieval Japan 850 years ago, became ordained as a Tendai monk at the age of nine and spent twenty years in monastic life on Mount Hiei in Kyoto. After a long time, he despaired of ever attaining awakening through such discipline and study, and he was discouraged by the deep corruption that pervaded the mountain monastery.



Years earlier, Honen (1133-1212) had descended Mount Hiei and begun teaching a radical new understanding of Buddhist practice, declaring that all self-generated efforts toward enlightenment were tainted by attachments. Instead of such practice, one should simply say the Nembutsu, wholeheartedly entrusting oneself to the Buddha's vow to bring all beings to enlightenment. Shinran finally abandoned his former Tendai practices and decided to join Honen's movement. It was Shinran's invitation to his spiritual journey.

Shinran dedicated himself to giving hope to those who thought they were hopeless. He realized his utter powerlessness to release himself from egoism and karmic bondage through the prescribed disciplines of traditional Buddhism. The more deeply he experienced his own imperfection and spiritual powerlessness, the more deeply he penetrated the meaning of Amida's compassion beyond any criteria or distinctions involved by the moralism of ordinary society.

Compassion is the essence of life and reality even when we are unaware of it. It fills the cosmos, and it embraces without excluding any. In Shinran's emphasis on the fulfillment of Amida's Vow, we can see liberation is a present reality. We no longer need to fear for our destinies because of our sins and our guilt. The dynamic, existential features of Shinran's thought have been frequently overlooked because he is regarded as teaching other-worldliness which was characteristic of traditional Pure Land thought. However, Shinran turned the center of attention from the future world to this world. Buddhist practice became a matter of living now. Shinran wished to liberate all people from their fears and anxiety generated through centuries of traditional doctrine that failure to believe or practice properly would lead a person to damnation.

For Shinran, spiritual practice became the way to express gratitude for the compassion that supports all our lives. It is not a tool for ego advancement or gaining benefits. The point of being Buddhist for Shinran is that when we come to have faith in Amida's deep wish and live in its light, we truly become free to live a full and meaningful existence in this life.

This story is explored in-depth in our new subscription offering within the EVERYDAY BUDDHIST Course Pathway; 15-C. Life of Shinran – The Reformer of the Pure Land Buddhism. For this and our entire course offering you can subscribe for \$10/month or save \$25 with an annual subscription of just \$95/year for unlimited access to all new courses and content.

Please visit everydaybuddhist.org to subscribe.

0 comments

To: Ministers and Sangha
From: Bishop Harada and YBE
Re: *Where Are We At?* Survey
Date: April 26, 2021

www.tinyurl.com/YBEResearchSurvey

Dear Reverends:

I hope this message finds you all well and safe.

Below please find a survey from the Young Buddhist Editorial (YBE) subcommittee which is working on a survey "Where We Are". Please see the details and link to the survey below.

Kindly share this survey with your membership. As noted below, the target demographic for the survey is anyone over the age of 18.

Thank you for your cooperation.

Gassho, Rev. Michael Endo
Executive Assistant to the Bishop, BCA

Dear Rev. Endo and Bishop Harada,
How are you doing?

I am reaching out on behalf of the Young Buddhist Editorial's subcommittee who has been working on the "[Where Are We At?](#)" Survey. If possible, we would like this survey to be distributed to the membership. Would you be able to share this information with temple leaders to share with their Sanghas?

Please let me know if you have any questions. I hope that you are doing well. Thank you in advance for your help and consideration. The details for the survey are attached and below:

The purpose of this survey is to gather more information about the lives of those in our own Jodo-Shinshu community. We mainly want to learn more information on what keeps them involved in temple activities or why they are no longer involved. The goal for gathering this information is to help our temples develop programming to better support our community. The target demographic for this survey is anyone over the age of 18.

The survey is anonymous and only takes about 10 minutes to complete. Here is the link for the "[Where Are We At?](#)" Survey: www.tinyurl.com/YBEResearchSurvey

Gassho,

Tara ([she/her/hers](#)) Native Land: [Huichin, Chochenyo Ohlone Land](#)

“Come Celebrate Gotan-e, Shinran Shonin’s Birthday

Seattle Betsuin’s Memorial Hall front lawn and Wisteria Plaza’s Shinran Statue

Sunday, May 16, 2021 1:00 - 3:00 pm”

Buddhist Churches of America’s Northwest District Prince Shotoku 1400 Year Memorial Service premiered on April 25, 2021



Program

1. Opening Remarks
2. Sutra Chanting Vandana / Ti-Sarana
Chanting of “Hymns in Praise of Prince Shotoku Nembutsu & Eko
3. Reading 1: Hymns in Praise of Prince Shotoku
4. Dharma Talk (English)
5. Reading 2: Senshin Serive book P. 7, No. 47
6. Closing Remarks for English service
7. Opening Remarks for Japanese Program
8. Reading: SANKIEMON
9. Dharma Talk (Japanese)

- Rev. Jerry Hirano (Idaho-Oregon)
Rev Jim Warrick (White River)
Rev. Tadao Koyama (Tacoma)
Rev. Katsuya Kusunoki (Seattle)
M.A. Amanda Goodwin (Spokane)
Rev. John Iwohara (Gardena)
M.A. Irene Goto (Seattle)
Rev. Jerry Hirano (Idaho-Oregon)
Rev. Yuki Sugahara (Oregon Buddhist Temple)
Rev. Yuki Sugahara
Rev. John Iwohara (Gardena)

DIAL THE DHARMA

Call the toll free number - 800-817-7918 to hear Bishop Harada’s message

Push “1” for English and “2” for Japanese

Please share this phone number with friends, family, and those Sangha members who may not use computers or the internet, to be able to listen to a short Dharma message during this time of sheltering at home.

MAY SHOTSUKI HOYO

The May Shotsuki Hoyo Memorial Service will honor the memory of those listed below who passed away in the month of May. This service will be combined with the Joint Memorial Service on Saturday, May 1st, at 10 AM and will be livestreamed on the Betsuin YouTube channel: <http://www.youtube.com/seattlebuddhisttemple>

Akizuki, Harry	Kadoguchi, Misano	Nishizaki, Elaine	Teramae, Isao
Aramaki, Towa	Kamimae, Misue	Noritake, Cyrus	Tomota, Yaeko
Asaba, Iku	Kawaguchi, Sadaye	Nosho, Setsuno	Toyoji, Toshio
Baba, James	Kihara, Jane	Oba, Sayoko	Tsubota, Tsuyoshi
Barda, Clifford	Kihara, Koichi	Ogata, Fred	Tsuchida, Takeshi
Deguchi, Jene	Kihara, Yoshito	Ogohara, Yoshitami	Tsuji, Shohichi
Demizu, Kosumi	Koga, Hiroshi	Okabe, Fuku	Tsurukawa, Fujio
Edamura, Fusa	Kono, Kazuye	Okada, Hiroshi	Ueki, Hisayoshi
Fujimoto, Mitsuyo	Kubo, George	Okano, Albert	Uno, Hikoichi
Fujishima, Craig	Kubo, Taiko	Okasaki, Gin	Uno, Miyeko
Fujita, Kayo	Kubota, Yoshiko	Okubo, Asako	Uno, Riichi
Fujita, Shizuko	Kumasaka, Henry	Osaki, Mitsuko	Urakawa, Masaye
Fujitomi, Hajime	Kumata, Kenryū	Ouchi, Sadamaro	Uyeji, Toshio
Fujiwara, Teruko	Kuramoto, Tetsuo	Sakaguchi, Naoki	Uyetsuka, Hajime
Funakubo, Tei	Kusakabe, John	Sakai, Grace	Watanabe, Aimie
Furukawa, Kano	Livanas, Ramona	Sakai, Sumi	Watanabe, Kazumi
Goto, Shizue	Mamiya, Ron	Sakata, Howard	Watanabe, Taki
Habu, Toki	Matsui, George	Sakuma, Kazuo	Yamada, John
Hada, Maki	Matsui, Tsugio Jack	Shimada, Masayuki	Yamada, Masako
Hamasaki, Jolene	Matsumoto, Suma	Shimbo, Shizuko	Yamagishi, Fude
Hamasaki, Tokiya	Miyahara, Hiromu	Shirakata, Kiku	Yamamoto, Sadako
Harris, Nga	Nagamatsu, Shoji	Sudo, Shigeo	Yamamoto, Yaeko
Hasama, Yoshimi	Nagamatsu, Sumio	Sueda, Ella	Yamane, Jim
Hasegawa, James	Nagano, Makoto	Suetsugu, George	Yamasaki, Rise
Hattori, Hideo	Naito, Richard	Suto, Fred	Yamashita, Akino
Hayashi, Harold	Nakagaki, Daisen	Tachiyama, Jack	Yasui, Kiyoshi
Hikida, Robert "Bob"	Nakamoto, Satoru	Takano, Shigeo	Yoneyama, Isamu
Hikida, Torazo	Nakamura, Joyce	Taketa, Shimano	Yoneyama, Mitsu
Hikoyama, Taka	Nakano, Sawako	Tamaki, Akiko	Yoshida, Sakae
Hiraoka, Willy	Nakauchi, Kazuma	Tameno, George	Yoshida, Yoshiko
Hori, Ross	Nakayashiki, Satono	Tanaka, Bill	Yoshimi, Frank
Ideta, May	Nguyen, Nhan	Tanaka, Misao	Yoshitake, Taro
Iguchi, Chieko	Nikaitani, Kenjiro	Taniguchi, Harry	Yuasa, Sharon
Imada, Dick	Ninomura, Taisuke	Tatsumi, Hanako	Yutani, Kazue
Izumi, Kosumi	Nishizaki, Akio	Terakawa, Shigeru	

JUNE SHOTSUKI HOYO

The June Shotsuki Hoyo Memorial Service will honor the memory of those listed below who passed away in the month of June. This service will be combined with the Joint Memorial Service on Saturday, June 12th at 10 AM and will be livestreamed on the Betsuin YouTube channel: <http://www.youtube.com/seattlebuddhisttemple>

Adachi, Shinsaburo	Hirabayashi, Tomonobu	Matsumoto, Patricia	Shimooka, Kazue
Aiko Shimizu	Hiraga, Noboru	Matsuoka, Toru	Shinagawa, Chieko
Akada, Same	Hoshino, Akio	Mihara, Minoru	Shinbo, Tamio
Akada, Shizue	Hyde, Jane	Minato, Kagei	Shiota, Shiro
Akutsu, Mary	Ideta, Henry	Miyahara, Kiyoko	Song, Linyu
Amabe, Hisano	Iguchi, Roy	Miyamoto, Sumio	Sumida, Hiroyuki
Aoyama, Katsumi	Imanishi, Yoshio	Miyao, Ume	Suto, Bessie
Baba, James	Inaba, Kenkichi	Mizuki, Hisato	Suyematsu, Mitsuo
Doi, James	Inaba, Shigeko	Mizumoto, Fukiko	Suzaka, Frank
Dumont, Marion	Ishibashi, Isao	Mizumoto, Nobuo	Tai, Hisano
Eguchi, Otome	Ishikawa, Kimiyo	Murakami, Tamae	Takei, Toshiko
Endo, Suzuko	Isomura, Mary	Nagamatsu, Toshiko	Taketa, Arlene
Eng, Shee	Iwasaki, Sachiko	Nagasugi, Tokuye	Tamura, Mary
Esuye, Hisako	Iwata, Nochi	Nakagawa, Itsuyo	Tanabe, Riso
Fudetani, Yoshio	Kajimura, Gary	Nakagawa, Kazuo	Tanaka, Yoshimi
Fujii, Yukiko	Kajimura, Hiroshi	Nakanishi, Misuno	Tani, Nobuko
Fujikawa, Nobuko	Kanaya, Toshiji	Nakashima, Suyeko	Taniguchi, Kuma
Fujimoto, Kiyoko	Kanegae, Toshie	Ninomura, Sue	Tazuma, Masako
Fujino, Mitsutaro	Kato, Michio	Nokichi, Miwa	Tazuma, Noboru
Fujioka, Harumi	Kawahara, Kiyoko	Obata, Rose	Terada, Kakichi
Fujioka, Momoko	Kawahara, Yoshisuke	Ohara, Masato	Terada, Yayeko
Fujita, Kinu	Kawamoto, Masao	Ohara, Rinzo	Teramoto, Kenso
Furukawa, Shizuye	Kawasaki, Tokuyoshi	Ohmiya, Masasue	Terao, Fred
Furuta, Roy	Kianzon, Tatsu	Oiye, Nobuko	Tsuchikawa, Chiyo
Furuta, Terumasa	Kido, Haruko	Okada, Sadaye	Tsuji, Kitaro
Hamano, Grace	Kiuchi, Janice	Okamura, Ray	Tsukamoto, Umekichi
Hamasaki, Satoko	Kobata, Kay	Okawa, Archie	Tsuruyama, Miyo
Hanada, Ronald	Kosai, Wesley	Ōmura, Kimi	Uyeji, Kamekichi (Kam)
Hara, Don	Kuramoto, Daisy	Pawloski, Junko	Wataoka, Linda
Harada, Charles	Kurimoto, Aki	Platnick, Tamiko	Yamaguchi, Iwao
Harui, Zenhichi	Kurosaki, Tsuyano	Saito, Koshige	Yamaguchi, Mamoru
Hasegawa, Yoriko	Maruko, Sadami	Sawa, Ayako	Yamamoto, Gary
Hayashi, Roger	Matsuba, Fude	Shibayama, Kamekichi	Yamamoto, Mineyo
Higashi, Shōzō	Matsubu, Shigeko	Shimizu, Haruko	Yokoyama, Hideyo
Higo, Seki	Matsumoto, Nobuko	Shimizu, Patrick	Yoshimi, Aiko
			Yoshinaka, Catherine

MAY 2021 BETSUIN SCHEDULE

Sunday	Monday	Tuesday	Wednesday	Thursday	Friday	Saturday
<p><i>To view all services, please visit http://www.youtube.com/seattlebuddhisttemple</i></p> <p style="text-align: center;">JUNE 2021 SPECIAL EVENTS</p> <p>June 6 All Sangha Memorial Service June 13 Awards & Recognition Service; last day of Dharma School 2020-21 term June 20 Bishops' / Rinbans' Memorial Service</p>						
2 9 am 10 am 11am	3 Rinban's day off 10 am - noon Dr Haneda Japanese seminar	4 Rinban's day off	5 10 am Morning Service CANCEL 11 am Sutra Chanting CANCEL	6 10 am NW Ministers' Assoc meeting	7 10 am Japanese Play Group on Zoom	8 10 am livestream Shotsuki/Joint Memorial Service 11 pm Gojikai Svc 2-4 pm Dr Haneda English Seminar
9 9 am 10 am 11am	10 Rinban's day off	11 Rinban's day off	12 10 am livestream Morning Service 11 am Sutra Chanting & Dialogue - Zoom	13 10 am Japanese Play Group on Zoom	14	15 2-3 pm Gagaku practice
16 9 am 10 am 11 am	17 Rinban's day off	18 Rinban's day off	19 10 am livestream Morning Service 11 am Sutra Chanting & Dialogue - Zoom	20 11 am Seattle Japanese Dharma Gathering - Zoom 7 pm Betsuin Cabinet Meeting	21 10 am Japanese Play Group on Zoom	22
23 9 am 10 am 11:00 am	24 Rinban's day off 8 pm Newsletter deadline	25 Rinban's day off	26 10 am livestream Morning Service 11 am Sutra Chanting & Dialogue - Zoom	27 10 am Japanese Play Group-Zoom 11 am Seattle Japanese Dharma Gathering - Zoom 7 pm Betsuin Board meeting	28	29
30 9 am 10 am	31 Memorial Day 10 am Virtual Nisei Vets			<p>The monthly Shotsuki Hoyo Memorial Service will be held during the Joint Memorial Service usually on the first Saturday of the month at 10 AM to honor the memory of sangha members who passed away during that month. The service will be livestreamed on the Betsuin YouTube channel.</p>		
<p>Japanese (Rinban) 11:00 am DX (Rinban - "Buddhism 101")</p>						

Seattle Buddhist Church
1427 S Main Street
Seattle, WA 98144

2021 May
Wheel of the Sangha
A Monthly Newsletter of
Seattle Buddhist Church

YBE'S BOOK CLUB FOR
OPTIMISTIC PEOPLE:
[https://
www.youngbuddhisteditorial.com/
bookclub](https://www.youngbuddhisteditorial.com/bookclub)

2021 FAMILY MEMORIAL SERVICE SCHEDULE

In the Jodo Shinshu tradition, family memorial services are held on designated anniversaries to express gratitude and recall cherished memories of our loved ones while listening to the Buddha Dharma. While the Temple is closed due to the Covid-19 pandemic, Rinban Kusunoki will read your loved one's name during the Joint Memorial Service livestreamed on most Saturdays at 10 am or will conduct a virtual service for your family and friends. If you have a family member who passed away in the following years, you are encouraged to hold a memorial service in 2021:

<u>Year of Death</u>	<u>Service</u>
2020	1st year memorial
2019	3rd year memorial
2015	7th year memorial
2009	13th year memorial
2005	17th year memorial
1997	25th year memorial
1989	33rd year memorial
1972	50th year memorial

Please call the Temple office at (206) 329-0800 to schedule a service.
- JN

May Online Service Schedule

[https://youtube.com/
seattlebuddhisttemple](https://youtube.com/seattlebuddhisttemple)

10:00AM

Wednesday

+ 11:00 AM Sutra Chanting & Dialogue,
but cancelled on May 5

Saturday, May 1 only

Joint Memorial and Shōtsuki Hoyo
see p. 18 and p. 19

Sunday, Service

Virtual, Pre-recorded

New! Now!
One (1)
Dharma Exchange
Every Sunday
via Zoom
11:00 - 11:30AM
See p. 8 for
Discussion
Topics

Dharma Exchange
Link

[https://
ip.constantcontactpages.c
om/su/rjidJqn/
betsuinweekly](https://ip.constantcontactpages.com/su/rjidJqn/betsuinweekly)

Contact Us

Seattle Betsuin
Buddhist Temple
1427 S Main Street
Seattle, WA 98144

Phone: 206.329.0800
Fax: (206) 329-3703
office @SeattleBetsuin.com
SeattleBetsuin.com

Office Hours
Call for recorded
updates and for
emergencies

Wheel of the Sangha Editors
Irene Goto, English: newsletter@seattlebetsuin.com
Machiko Wada, Japanese: newsletter-jpn@seattlebetsuin.com
Deadline is the third Monday each month at 8PM

Minister 24 hours
206.779.2214