



Wheel of the Sangha

April 2021

Seattle Betsuin Buddhist Temple, A Shin Buddhist Temple,
Jodo Shinshu Nishi Hongwanji-ha

a monthly newsletter of Seattle Buddhist Church
Volume 41 Issue 4
online only

“Hanamatsuri – The Four Sufferings (*shiku*) and the Eight Sufferings (*hakku*)”

by Rimban Katsuya Kusunoki



“The Lord am I, of all this Universe, Heaven and Earth, none is my equal. I have come to conquer death, sickness, old age. I have come to subdue the spirit of evil, and give peace and joy to the souls tormented in Hell.” — Lalita Vistara.

In February, one temple member donated their family *Obutsudan* to the temple. It is a good size *Obutsudan* for use at home. Please contact the temple if you want to adopt the *Obutsudan* sometime soon. When I was wiping it, I found a small scroll. There was a Buddha’s image and a message on it. It says,

“The Lord am I, of all this Universe, Heaven and Earth. None is my equal. I have come to conquer death, sickness, old age. I have come to subdue the spirit of evil. And give peace and joy to the souls tormented in hell. -Lalita Vistara (Sutra)
Distributed by Minidoka United Buddhist Church in commemoration of Buddha’s birthday festival, 1944”

During World War II many Buddhists were sent to Minidoka and lived there. Shingon sect, Nichiren sect, and Jodo Shinshu sect joined hand in hand and worked together as the Minidoka United Buddhist Church. I believe that the Buddhist leaders distributed the scrolls to the Sangha members when they celebrated Hanamatsuri together seventy-seven years ago. And now, going beyond space and time, I received one of them. I feel as if I am now celebrating Hanamatsuri together with people who also celebrated it in Camp.

Shakyamuni Buddha told us “our life is

continued on p. 2...



Katsuya Kusunoki

Rimban Kusunoki speaking at Religious Department meeting of March 7, 2021 via Zoom; see p. 7

Join Seattle Betsuin's Virtual Programs

We have ongoing Book Study, Meditation, Dharma Exchange. See information on p. 12 and below on how to join virtually.

Weekly Meditation at 9:00AM on Sundays. Contact webmaster@seattlebetsuin for a Zoom link.

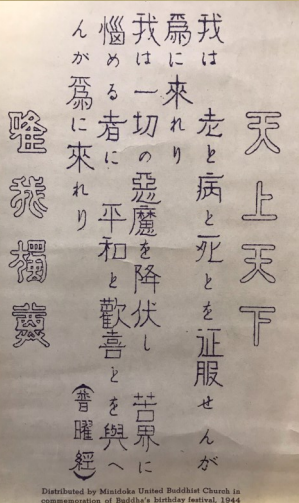
Next Seattle Betsuin Book Study will meet on Saturday, April 10, at 9:30AM. See info on p. 4.

To receive Zoom links to Buddhist Book Study and Dharma Exchange, email newsletter@seattlebetsuin.com and specify the group in the subject line. You will be emailed a link.

Sunday and Weekday Morning Services Online Su. M. W. Sat. 10:00AM

<https://youtube.com/seattlebuddhisttemple/> Search “playlists” for past services.

Calendar: p. 19 and at SeattleBetsuin.com



Distributed by Minidoka United Buddhist Church in commemoration of Buddha's birthday festival, 1944

...Rimban's Message continued from p. 1
suffering". This scroll also tells us about it. "suffering" in Buddhism means that things are not going as I want. It is called "Four Sufferings (*shiku*)" which all human beings, without exception, have experienced. These are birth, aging, sickness, and death. Many people have already known about the four sufferings. There are also the four additional sufferings and it is called "Eight Sufferings (*hakku*)". There is a Japanese idiom of "*shikuhakku*" which originally came from Buddhism. Japanese people say "*shikuhakku - shita*" when they struggled to do something. Today, I would like to introduce the four additional sufferings following the Four Sufferings (*shiku*). Here is the quote from "LIFE THROUGH THE POWER OF THE BUDDHA" written by Ehan Numata published from Bukkyo Dendo Kyokai (BDK).

1. The suffering of Separation from Loved Ones (*aibetsuriku*)

If you were to ask what is most sad for human, it is separation from those we love. If it is only temporary, we know we will be able to meet again. Even if we cannot meet, as long as the other person is alive, we can expect to meet again someday. However, if we are eternally separated by the death of the person, the suffering becomes unbearable.

2. The suffering of Meeting with the Hateful (*onzoeku*)

I suppose that there is no one who, from the time he/she was born to the present, has not had someone whom he/she hated or resented. If there was even one disliked teacher among those who taught us in school, it was almost unbearable. And usually there are one or two persons among friends whom we cannot stand. In extreme case, there are even family members whom you cannot put up with. For all that, we cannot live without having some contact with people whom we resent and hate. At least there will be occasions when we must meet and speak with them. If we feel resentment and hatred, the other party, too, naturally comes to harbor the same feelings, and we suffer even more.

3. The Suffering of Not gaining what One Seeks (*gufutokku*)

Are there limits of human desire?

When we are burning with desire, we think that if

only this carving is fulfilled, we will become happy. In actuality, when it is fulfilled, a new desire arises. Therefore, Shakyamuni Buddha taught us that human desire has no limits. If we do not realize this, however far we may go, human beings want more and more. Truly up to the moment of death, we cannot be satisfied. I think, therefore, that it is necessary to think about this very carefully.

4. The Suffering Caused by the Five Skandhas (*gounjoku*)

The last one is the sufferings that comes from what are called five aggregates (Skandhas). The five aggregates are form, perception, conception, volition, and consciousness. Form, the first one, means the physical body. The latter four are the analytical elements of functions of the human mind. In other words, a human being is made up of five elements temporarily gathered. We suffer because **each** of these five elements seeks its objective and consumes itself vigorously. Putting it simply, this means that human existence itself produce suffering.

If a human did not have a physical body, there would be no sickness, old age, or death. Further, if there were no mind function, the suffering, which is caused by the various phenomena of this world, would disappear. But because both of these actually exist, we are suffering.

Please reflect upon your life through these sufferings. I can relate these sufferings a lot to my experiences. Buddhism does not say that a person who has these sufferings are a bad person. Buddhism tells us that it is human nature to experience the four sufferings and eight sufferings. It is why Shakyamuni Buddha taught us "Our life is suffering" and our human desires and attachments (*bonno*) are the cause of these sufferings. Here is one example to think about Buddhist **system**. When I get sick, a doctor sees my symptoms and conditions first. Next, the doctor diagnoses what is wrong and finds out the causes. Otherwise, the doctor cannot do any proper treatment for me. If I know the symptoms and their cause, I can be careful avoiding the recurrence of my sickness. We can compare this medical procedure with Buddha's guidance which is called Four Noble Truths. Here is my way to appreciate the Four Noble Truths.

Buddhism is the guidance:

1. to sincerely contemplate our sufferings which we experience in our everyday life.
2. to diagnose and make us aware of the causes (desires, attachments) of our sufferings.
3. to tell us about the 100% healthy condition (the state of zero sufferings) which is our goal.
4. to tell how we achieve the goal (enlightenment, *satori*).

This is the basic structure of Buddhist path which Shakyamuni Buddha taught us. There are many different Buddhist paths to follow. We are Jodo Shinshu (True Pure Land Buddhism) followers. We walk the path to Amida Buddha's Pure Land to achieve the goal of enlightenment. As long as we

live in this human world, we cannot completely eliminate these sufferings. But through walking this path, we can be aware of what sufferings we have and what attachments (*bonno*) we have. While walking the path, we can learn from the state of enlightenment (*satori*) how to live our life without fully being controlled by our desires and attachments (*Bonno*). It opens up the way to live our life as we are.

Hanamatsuri (Shakyamuni Buddha's Birthday) is on April 8th. At Seattle Betsuin, we have scheduled a Hanamatsuri drive by on April 3rd and 4th and virtual Hanamatsuri service on April 11th. Please see the flyer for details. I hope many people can participate in Seattle Betsuin's Hanamatsuri service. Please also celebrate Hanamatsuri at home!!

Tea Talk by Leanne Nishi-Wong



Hanamatsuri - the Betsuin celebrates Sakura in bloom

Spring is my favorite season. The light of day is longer, and the dark hibernation period has ended. The season ushers in renewed spirits, as well as new growth in the gardens.

This month, the Betsuin will celebrate Hanamatsuri (the flower festival) to commemorate baby Buddha's birthdate. Please see your email news blasts and mailed letters for information on how and when to participate in this special temple event.

Covid restrictions are lifting, in stages; vaccinations are being administered; and the question about when the Betsuin will be open to in-person gatherings is in the minds of many. BCA has had several discussions on the opening of temples, with the leaders from BCA affiliated temples. The President of BCA, Dr. Kent Matsu-da, is a practicing physician, who is up-to-date on all of the Covid-19 information. The new variants of the virus are a concern, with new cases detected each day. As there is a lot of uncertainty, with the efficacy of the vaccines concerning the new strains, and the continued active cases of the virus, the temple will remain closed until further notice.

The general public is expected to be vaccinated by the Summer. Gathering in groups, while adhering to safety protocols, might be possible soon after. The temple will continue to monitor the Washington State health guidelines and recommendations of BCA.

While this month is a celebration for Buddhists, we cannot ignore the rising violence and vitriol speech targeting Asians and other BIPoC. We mourn for the victims and their family/friends and worry about our own family/friends. The Betsuin's Engaged Buddhism group has information on organizations that can assist you with education, reporting of incidences, and emotional support associated with these occurrences.

Please reach out to the Betsuin for questions, concerns or information.

In Gassho,
Leanne

WE'RE KEEPING OUR LINKS BRIGHT AND STRONG

Dharma Exchange Update

Both, Sangha Exchange and DS Parents Exchange, will be combined starting April 4. One (1) Dharma Exchange will take place each Sunday at 11:00AM via Zoom. Please find the Zoom link in the Weekly E-News or send an email to newsletter@seattlebetsuin.com to join the email list. Rev. Kusunoki or Irene Goto will have a topic or guest speaker to be the focus of discussion. Everyone is invited. See the flyer on p. 8 in this issue for April topics.

Meditation meets each Sunday mornings at 9:00AM—9:45AM. We open with SanBujo, Sit in Gratitude Meditation for 20 minutes, chant Nembutsu and close with discussion. Please join us on Zoom! Email newsletter@seattlebetsuin.com and specify SBC Meditation to receive the link.

Buddhist Book Study Our next meeting will take place at 9:30-11:00am on Saturday, April 10, 2021. We will discuss the transcript of a talk by Kenneth Tanaka at the Dr. Taitetsu Unno Memorial Lecture: *Revisioning Shin Buddhist Teachings for Today*. Please contact Wayne Suyenaga or newsletter@seattlebetsuin.com for the transcript and the Zoom link to the meeting.

Submitted by
Wayne Suyenaga and Irene Goto

THE SBC MEMBERSHIP COMMITTEE...

would like to “thank” the following for contributing their **2021** sustaining membership dues - the basic dues towards Temple maintenance/operations and programs. The minimum for individual membership is \$400 (for under 70 years of age), and \$350 (for 70 years of age and over).

Kayla Butler, Lisa Butler, Lani Carpenter, Ron Hamakawa, Reiko Hara, Kimiko Kodagoda, Tom Kodama, Wayne Kuramoto, Rick Mamiya, Kevin Nagai, Sunnie Nagai, Nancy Okawa, Greg & Ann Oxrieder, Kayoko Terada, Margaret Teramoto, Dennis Yasukochi & Lynne Goodrich, Fusae Yokoyama, Kevin & Kari Ann Yokoyama

We'd like to 'Welcome' **KAYLA BUTLER** as a new member to our Sangha

(Compiled by Howard, Joan, Pauline & Steph)

Receive a digital copy of the Seattle Betsuin Monthly Newsletter by clicking and leaving your email at this link:

[SBBT Monthly Newsletter](#)

BCA Connect

(Buddhist Churches of America)

Sign up! The BCA newsletter is where you can find all the temples' live-streams, workshops, and messages from temples across the country.

<https://www.buddhistchurchesofamerica.org/connect/>

Musical Notes by Kemi Nakabayashi

Kudos to Connor McKinney and Minister's Assistant Alex Sakamoto for presenting Seattle Betsuin's experience last year and future plans for online bon odori for the BCA Music Committee "Bon Odori Online" webinar. The panel discussion was held on March 27 to a Zoom audience including attendees from across the BCA as well as Canada and Hawaii kyodans. There is still time to register for the "Taiko Online" webinar on Saturday, April 3 from 11:00 a.m. to 12:15 p.m. (PST). To register for "Taiko Online": <https://forms.gle/5AvJfviLkbjzznt6> or please see the BCA website under Events for more information.

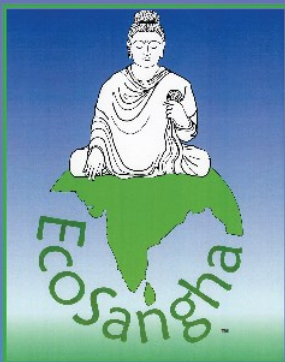
Further highlighting the talent of our young adults, we appreciate the gatha offering from Emily Ko and Souma Yabuki of *I'm a Link in the Golden Chain* for the Scholarship Awards Service on March 28. For this month, we welcome you to invite your friends and family to two special services with new musical offerings. Don't forget to encourage them to subscribe to our Seattle Betsuin YouTube channel



SEATTLE BETSUIN EARTH DAY MUSIC SERVICE

Sunday, April 18, 2021
10:00 a.m. PST

Seattle Betsuin YouTube channel:
www.youtube.com/SeattleBuddhistTemple



English Dharma message by
Rev. Don Castro, BCA Minister Emeritus

Japanese Dharma message by
Rinban Katsuya Kusunoki

Service program will include:

Music Service *Sanbutsuge* led by Rinban Katsuya Kusunoki of
Seattle Betsuin & Rev. Tadao Koyama of Tacoma Buddhist Temple

BCA Music Committee Webinar



INNOVATIONS & CHALLENGES with TAIKO ONLINE

April 3, 2021 • 11:00 am – 12:15 pm PST

Featuring short presentations by four taiko leaders followed by
an open forum to share ideas and resources.

Panelists:
Johnny Mori, Senshin Buddhist Temple
Elise Fujimoto, Mountain View Buddhist Temple
Sydney Shiroyama, Palo Alto Buddhist Temple
Paul Sakamoto, Puna Hongwanji Mission

Moderator: Tyler Moriguchi, Seattle Betsuin Buddhist Temple

For registration
<https://forms.gle/5AvJfviLkbjzznt6>
Hosted by the BCA Executive Committee

when they join our online services! New instrumental recordings will be added for the Hanamatsuri service on April 11. This year the Earth Day service on April 18 will be presented again as a special music service with *Music Service Sanbutsuge* included. Rev. Don Castro will give the English Dharma message with Rev. Kusunoki providing the Japanese Dharma message. With gratitude, we also thank Yoko Yanari for creating this Earth Day Music Service announcement as well as the BCA Music Committee webinar flyers.

Earth Day Music Service

Sunday, April 18, 2021 10:00am PST

LIVE DHARMA SERVICES

STREAMING SUNDAY MORNINGS

Check temple websites to confirm weekly schedules

RECENT SERVICES & TALKS

Posted regularly on temple websites and social media

Seattle Betsuin Buddhist Women's Association

Submitted by Janie Okawa

SBBWA's Mission is to cultivate religious awareness as Jodo Shinshu Buddhist women and promote fellowship among its members; to serve and support the Seattle Betsuin, and contribute services to the welfare of the community.

Our New (All) Membership Service on April 18th welcomes new members who are interested in our mission to serve our members, temple and community. If you, or anyone you know might be interested in becoming a SBBWA member, please contact Joan N. office@seattlebetsuin.com, Margaret G., or a cabinet member.

Temple Pantry cleaning and sorting - by Kanako Charlene Y., Suzuko T., Dennis S., Ritsuko K., Shiz K. and I were the crew that went through the pantry. We worked for three hours sorting everything from cutting boards, pots and pans, dish and hand towels, aprons that we were keeping, and setting aside those things that need to be tossed. Everything was sorted into piles in the dining room for further review.

Fun for SBBWA members:

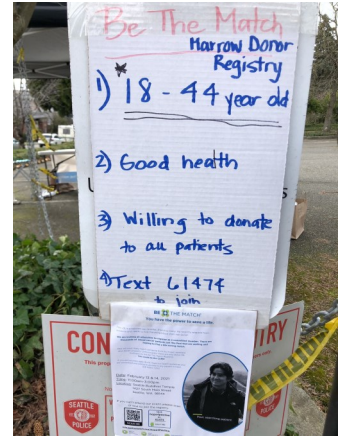
The Activities Committee organized an online class with Jeff Yamane who showed us how to make a delicious pistachio biscotti. He created a step-by-step video that we could watch online. (so much easier to watch someone make it than to just read the directions!) Thank you, Fran T. and Jeff, for making this happen!

Kemi N. has encouraged us to join the Palo Alto Sing-along every Thursday from 7-8pm featuring old (and newer) favorites plus Japanese songs.

We continue our **Tomodachi Friend Birthday project** and send members a birthday card during their birth month. Let Margaret G. know in what month your birthday occurs.

Serving the community:

Big Thank you to several members who were involved in the **Hope4Paul Bone Marrow Donor Drive**, organizing, helping in the parking lot, and the many members who encouraged their targeted-age children to get screened. Several members were involved in calling members to schedule **covid vaccinations** in the temple gym, with International Health Services, NightWatch, and Wisteria Manor. Also, many volunteered on the day to help facilitate the event.



Sadly, we say goodbye to our member and Minister's Assistant, Meya Stout, who will be moving back to Las Vegas to be an integral part of their Sangha. She has been such an enthusiastic, active participant from the minutes she joined us. But we look forward to keeping in contact and seeing her at BCA events and online.

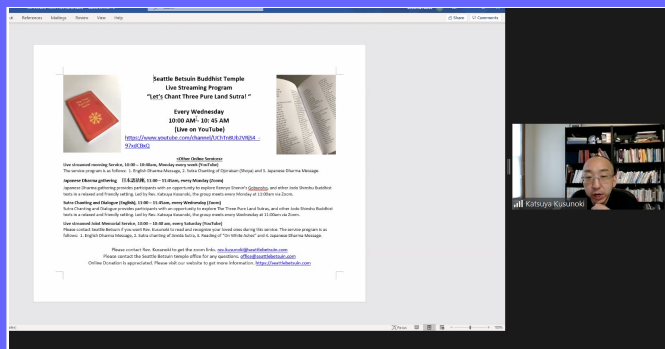


Upcoming Events:

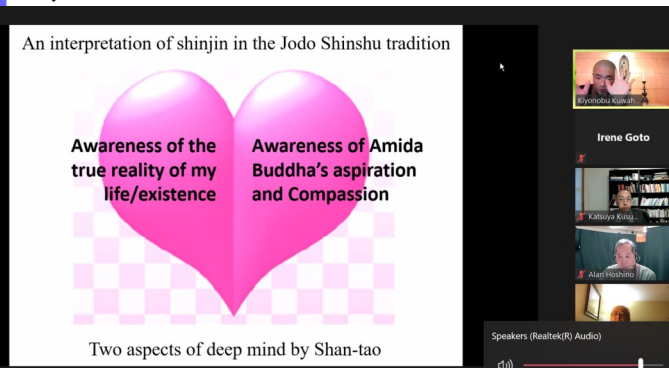
April 18, 2021 - New Member Service at 12:00pm via Zoom

May 7, 2021 - NWD BWA meeting via Zoom

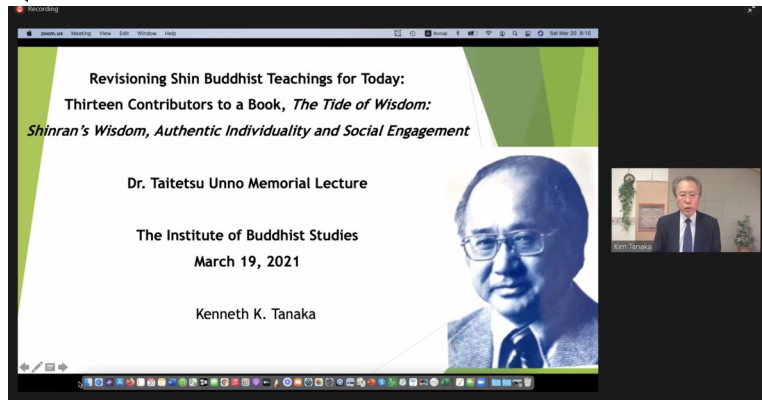
Shōtsuki Hoyo Memorial will be observed on Saturday, April 10, 2021 at 10:00AM, live-streamed at the Joint Memorial Service. The names of those who will be remembered are listed on p. 17. Visit <http://www.youtube.com/seattlebuddhisttemple> to attend.



Seattle Betsuin hosted a lecture on *shinjin* by Rev. Kiyonobu Kuwahara on March 17, 2021.



Rev. Kusunoki held Religious Department Meeting via Zoom on March 7, 2021. Twenty-five members were present and wished Minister's Assistant Meya Stout a farewell for her return to Las Vegas.



Over 100 attended IBS's Dr. Taitetsu Unno Memorial Lecture, open to the public, on March 19, 2021 on Rev. Unno's 7th year cycle memorial. Rev. Dr. Kenneth K. Tanaka offered his paper via Zoom from Japan. Rev. Tetsuo Unno, Rev. Mark Unno and Alice Unno warmly greeted us. - IG

General CF News

Camp Fire Director News submitted by May Honmyo

Camp Fire's 111th birthday was celebrated with a virtual birthday service on March 7th. Our two youngest camp fire groups, the Turtles and Flying Squirrels, presented their artwork of our flags as our normal physical presentation was not possible. Our older camp fire members volunteered to make videos for other parts of the service. Our camp fire alumni also participated in the service with Emily Ko's motivational Dharma talk titled "Jellyfish Moments and the Pandemic" and Emi Nakashima's recitation of the Six Parmitas. Lastly Alex Kirschner, from the Seattle Puget Sound Camp Fire Office, announced and presented the Wohelo Award to Allison Shibata and Janay Luke.! Special thanks to Connor McKinney for organizing and compiling all the videos for this birthday service. Please see the link below if you would like to view the service.
<https://www.youtube.com/watch?v=gGUipJJw4pQ>

Flying Squirrels submitted by Cassidy

We continue to have video meetings and have finished the Trail to Creativity. Activities included making puppets and practicing storytelling.

Turtles submitted by Akiko Yabuki

We wrapped up our Candy Sale on February 21st. Thank you so much all for supporting us. We had a great time and look forward to selling candies in person next year. We also participated in the Camp Fire Virtual Birthday Service on March 7th, finished our Trail of Family and Community and talked about what it means to be a global citizen. Although we only meet online, every meeting our "Kizuna" is getting stronger and supporting each other and looking forward to be the change for the better in the future.

Lemonades submitted by Cassidy

The Lemonades are continuing to work on their advocacies towards their Wohelo. A message from Cassidy: Do you enjoy sewing or want to help children going through cancer treatment? Non-profit organization, Ryan's Case for Smiles, donates pillowcases to improve the quality of life for children going through treatment. If you are interested in helping sew pillowcases and/or making a donation of any amount towards sewing materials, please contact Cassidy at cassidywong23@gmail.com for more information.

Sunday Dharma Exchange

Simplified!

11:00AM - 11:30AM

on Zoom

until further notice

One, same Zoom link

Dharma School Parents and All Others

Every Sunday!

The Zoom link appears in our *Weekly E-Newsletter*.

Sign up for our Weekly E-Newsletter at:

<https://lp.constantcontactpages.com/su/rjidJqn/betsuinweekly>

2021 DX Topics of Discussion:

- April 4** Rev Goto, Chris Grabowski - *Taoism*
- April 11** Rinban - *My Life in Zimbabwe*
- April 18** Rev Goto, Trevor Yokoyama - *YoungBuddhistEditorial*
- April 25** *Naijin Tour with Rinban*

- IG 3.24.2021

Seattle Betsuin Buddhist Temple **HANAMATSURI 2021**



**VIRTUAL HANAMATSURI
SERVICE**

**SUNDAY
APRIL
11
10:00AM
PST**

English Message: Rinban Katsuya Kusunoki
Japanese Message: Rev. Kazuaki Nakata,
Fresno Buddhist Temple

www.YouTube.com/SeattleBuddhistTemple

Commemorating the birth of Prince Siddhartha Gautama, who became enlightened as Shakyamuni Buddha. Prince Siddhartha was born in Lumbini Garden (present day Nepal) surrounded by many flowers, birds and sweet rain that showered the baby Buddha.

Join us to celebrate this special occasion!

April 3-4, 2021 | 12:00-2:00pm

Join us at the Temple for outdoor Kanbutsu (pouring sweet tea over the baby Buddha) and pick-up a family treat bag from Dharma School.
Don't forget to bring your origami flower offering - see email for details!

**Please mask-up when you come and stay home if you are not feeling well.*

Seattle Betsuin Buddhist Temple
1427 S. Main St. Seattle, WA 98144 | www.seattlebetsuin.org | (206) 329-0800

The Seattle Betsuin Gratefully Acknowledges The Following Donations 2021 February - March

Funeral / Memorial / Nokotsudo:

<u>Funeral / Memorial / Nokotsudo:</u>	<u>Amount:</u>	<u>Given by:</u>
Sachiyo Enomoto – In Memory of	\$ 5,000.00	Estate of Sachiyo Enomoto
Tommy Deguchi – In Memory of	\$ 500.00	Aya (Jean) Deguchi
Fumie Taniguchi – In Memory of	\$ 500.00	Merrily Taniguchi
Rev. Tatsuya Kusunoki – In Memory of	\$ 100.00	Rev. Katsuya & Ayano Kusunoki
Fumiko Okada – Memory of	\$ 50.00	Megumi Okada
Karoku Okada – Memory of	\$ 50.00	Megumi Okada
Kenneth Shigaya – In Memory of	\$ 100.00	Shigaya Family

In Memory of:

<u>In Memory of:</u>	<u>Given by:</u>
Brian Fujita	Nori Suguro;
Mary Yamamoto Furuta	Connie Ozeki-Chinn; Merrily Taniguchi
Shirley Kameda	Mabel Nishizaki
Chieko Kubota	Ritsuko Kawahara
Krista Nakano	Connie Ozeki-Chinn
Yasumi Osako	Ritsuko Kawahara
Kenneth Shigaya	Connie Ozeki-Chinn; Nori Suguro; Peggy Tanemura; Miyoko Tazuma
Fumie Taniguchi	Ritsuko Kawahara; Irene Plosky

General Donations:

<u>Donor:</u>	<u>For:</u>
Jeff & Vivian Hiroo	Celebration of Mickey Hiroo's 100 th Birthday
Rick Mamiya	General Donation
Donald & Karen Akira	General Donation
Nina Tomita-Kato	General Donation
Akemi Ishida	General Donation
Junko Nakano	General Donation
Dean Koga	General Donation
Tomiko Nakama	General Donation
Dennis Yamashita &	Pure Land Sutras
Elaine Aoki	
Ben & Etsu Shimbo	Sutra Book
BreAnna Taylor	Service Book
Ronald & Suzuko Terada	Rev. Kiyonobu Kuwahara Lecture
Chiho Pewitt	Rev. Kiyonobu Kuwahara Lecture
Akemi Ishida	Rev. Kiyonobu Kuwahara Lecture
Craig & Joan Nakano	Rev. Kiyonobu Kuwahara Lecture
Ritsuko Kawahara	Rev. Kiyonobu Kuwahara Lecture
James & Ikuko Dodobara	Rev. Kiyonobu Kuwahara Lecture

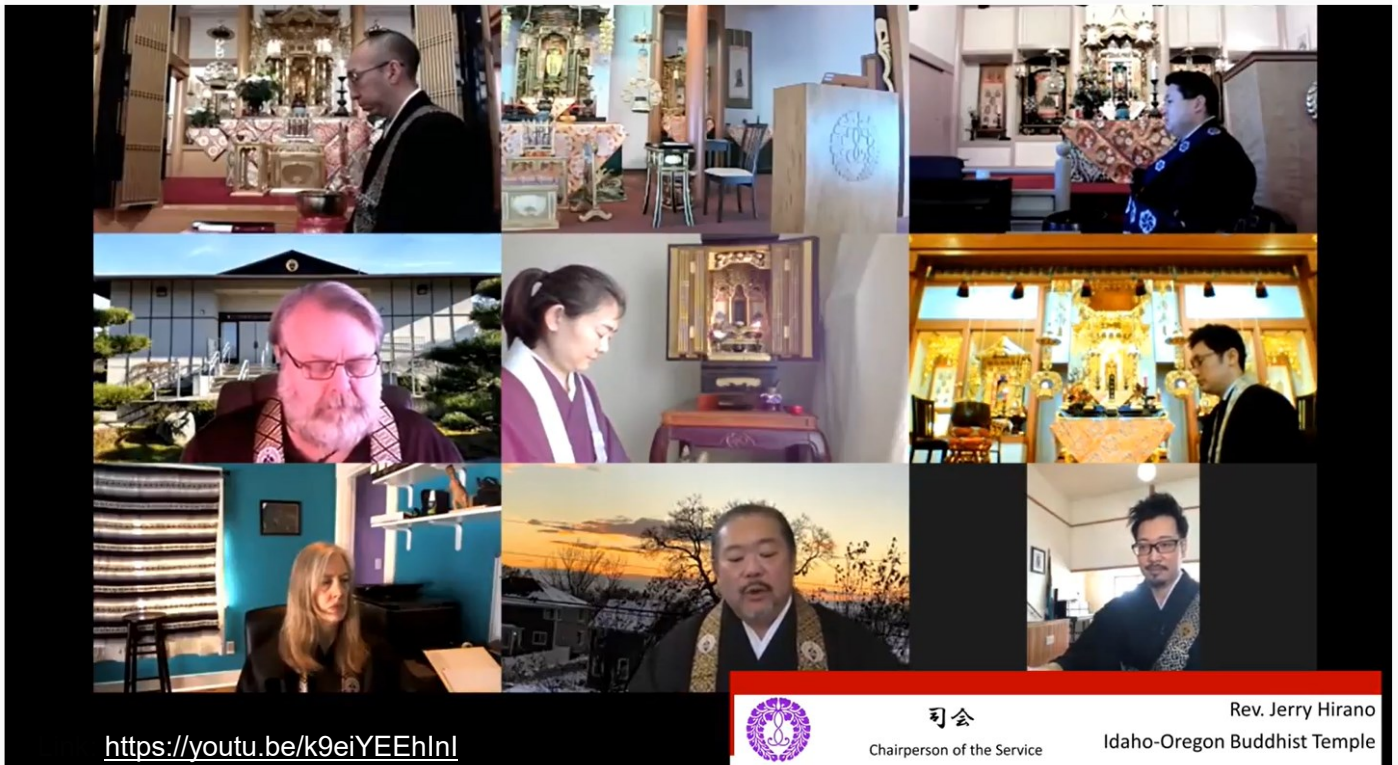
continued on p. 11....

...General Donations continued

Junko Nakano Rev. Kiyonobu Kuwahara Lecture
Ben & Etsu Shimbo Rev. Kiyonobu Kuwahara Lecture

Special Services: Ho'Onko: Ron Hamaka wa; Masako Kawamoto; Kiyoko Nakanishi; **New Year's Eve/ New Year Day:** Ron Hamakawa; **Nirvana Day:** Gail Kaminishi; **Spring Ohigan:** Janet Baba; Connie Ozeki-Chinn; Kenny & Yoshie Dodobara; Suzanne Fujinari; Toshiko Fukeda; Ellen Hale; Ron Hamakawa; Yoko Hamanaka; Peggy Hanada; Reiko Hara; Michiko Hirata; Jamie Huh; Satoru & Grace Ichikawa; George & Kayoko Kakiuchi; Dale & Shizue Kaku; Tetsuden & Cecilia Kanako Kashima; Ann T. Kashima; Harold Kawaguchi; Ritsuko Kawahara; Masako Kawamoto; Kimiko Kodagoda; Art & Lori Kozai; Carolyn M. Kunihiro; Wayne Kuramoto; Shogo & Fusako Kusumi; Mariko Mano; Julie Mayeda; Sheri Mizumori; Yoshio & Judith Nakamura; Kiyoko Nakanishi; Craig & Joan Nakano; Junko Nakano; Mabel Nishizaki; Jim Norton & Kemi Nakabayashi; Barry & Marlene Okada; Dean O'Shields; Patricia Oye; Robert Seko; Zachary Semke & Ann Ishimaru-; Dennis M. Shibata; Ben & Etsu Shimbo; Roy & Kazumi Shimizu; Sato & Darlene Shimizu; Aiko Sukanuma; Wayne Suyenaga; Masaru & Anna Tahara; Kiyoko Takashima; Yoshiaki & Naomi Takemura; Sonoe Taketa; Masao & Frances Tamekuni; Ileene Kawahara-Tanabe; Kevin Tanemura; Miyoko Tazuma; Florence Terami; Stuart Teramoto; Sam & Masako Uchida; Tazuko Uyenishi; John Wiggins; Akiko Yabuki; Fujie Yamasaki; Dennis Yamashita & Elaine Aoki-; Kevin & Kari Ann Yokoyama; Charlene M. Yoritsune; Fuyo Yoshida; Nobuo Yutani; James & Tomiko Zumoto

Buddhist Churches of America's Northwest District Joint Spring Ohigan Service premiered on March 22, 2021



1. Opening Remarks (Rev. Jerry Hirano - Idaho Oregon Buddhist Temple) 2. Chanting of Shishinrai, Hanjusan Zenjo (Rev. Tadao Koyama - Tacoma Buddhist Temple) 3. Chanting of Nembutsu (Rev. Yuki Sugahara - Oregon Buddhist Temple) 4. Chanting of Kanmuryojukyo (excerpt), Nembutsu and Ekoku (Rev. Katsuya Kusunoki - Seattle Betsuin Buddhist Temple) 5. Reading of Six Paramitas (Ken Garner - Oregon Buddhist Temple) 6. Dharma Talks (English & Japanese) - (Rev. Yushi Mukojima [Guest] - Mountain View Buddhist Temple) 7. Reading of Jodo Shinshu Creed - (Lynrae Hubbell - Tacoma Buddhist Temple) 8. Closing Remarks (Rev. Jerry Hirano) 9. Announcement of the Future Services Buddhist Churches of America Northwest District are: Idaho Oregon Buddhist Temple: <http://www.iobt.org/> Oregon Buddhist Temple: <https://www.oregonbuddhisttemple.com/> Seattle Betsuin Buddhist Temple: <https://seattlebetsuin.com/> Spokane Buddhist Temple: <https://www.spokanebuddhisttemple.org/> Tacoma Buddhist Temple: <http://www.tacomabt.org/> White River Buddhist Temple: <https://www.wrbt.org/> Yakima Buddhist Church: <https://www.facebook.com/yakimabuddhistchurch/>

SEATTLE BETSUIN BUDDHIST TEMPLE

Practicing in the Jodo Shinshu Tradition

- Wednesday chanting, sutra study, and dialogue led by Rimban Kusunoki. See "Full Calendar" on <https://seattlebetsuin.com> and email webmaster@seattlebetsuin.com for meeting link.
- Seattle Betsuin Book Study meets Saturday morning once per month. Email webmaster@seattlebetsuin.com for meeting link.
- Sitting in Gratitude Meditation meets Sunday mornings at 9:00AM. Email webmaster@seattlebetsuin.com for meeting link.
- Seattle Betsuin YouTube Channel for live-streamed and recorded Sunday and weekday morning services: <https://www.youtube.com/seattlebuddhisttemple> and see Play Lists.



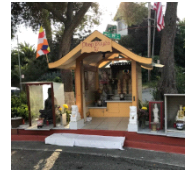
Podcast by

Rev. Takashi Miyaji <https://rdtakam.podbean.com/> or



<https://podcasts.apple.com/us/podcast/no-doubt-a-shin-buddhist-approach/id1511351502>

Podcast on Oakland Buddha statue



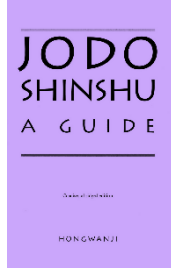
<https://ohthepodcastsyoullgo.wordpress.com/2017/11/16/oakland-buddha-statue/>

- **PACIFIC WORLD** Journal of the Institute of Buddhist Studies: <https://pwj.shin-ibs.edu/> Issues of the Pacific World Journal from 1980's to current. All the articles can be downloaded in pdf. Recent issues are more specialized but some in the 1980s were directed to general audience but still of interest.

- **MURYOKO** 'Infinite Light'



Journal of Shin Buddhism (main articles): <http://nembutsu.info/contents.htm> This is from the Australian Jodo Shin group.

-  **JODO SHINSHU A GUIDE** is available as a [PDF on the BCA website](#). BCA stands for Buddhist Churches of America. This abridged edition provides an overview of Buddhism, Shinran Shonin, and the Jodo Shinshu teaching. <https://www.buddhistchurchesofamerica.org/jodo-shinshu-a-guide/>



Free video lectures offered by the Center for Buddhist Education
For upcoming programs:

<https://www.buddhistchurchesofamerica.org/center-for-buddhist-education/> For previous programs and play lists: <https://www.youtube.com/c/BCACenterforBuddhistEducation/videos>



EVERYDAY BUDDHIST

offers courses appealing

to newcomers and experienced students. When you subscribe for \$95 per year (or \$10 per month) you get unlimited access to 12 NEW Courses and support our mission to share contemporary Shin Buddhist practices for everyday life. <https://www.everydaybuddhist.org>



Young Buddhist Editorial

is dedicated to providing a platform for the expression of young Buddhists and a safe space where such young Buddhists can foster growth, community and interconnectedness while creating

a dialogue between young Buddhists and other generations of Buddhists. Articles, artwork, and workshops:

<https://www.youngbuddhisteditorial.com/>

###

Bone Marrow Drive Success!

by Andrea Mano & Tina Zumoto Ko, co-chairs

We are touched by the selfless giving of your time and help in spreading the word among your family, friends and community. For more information about the continued effort in multiple cities for Paul, please visit GanbattePaul.com. Please join us as we will



Can you really host a marrow donor drive for 18-44 years-old during the pandemic, with social distancing and a snowstorm? The answer is Yes, we can! With a drive-thru, no contact registration and self-swab kits, 54 new marrow donors were registered February 20-21, a week after the snowstorm. Sensei Kusunoki and Ayano were first in line leading the way.



A BIG Thank you to our Sangha and community for supporting Hope4PaulWA getting the word out and asking your family and friends. Almost all said they came because someone they knew told them about the drive and a few saw our event and dropped in. 25 hardy volunteers braved the wind, devised anchors from packing tape and literally held down the tent, where over 50 new marrow donors were registered at our drive-thru drive. Paul Goodman, a 29-year-old Asian-American film maker with leukemia, from Orange County Buddhist Church, is the inspiration for our drive. The update we recently received is he is ready to receive stem cells from his family. We wish him the best.

We are so appreciative of the Temple and community support, who showed up to register, volunteered to help at the event, and got the word out about the need for a marrow donor for Paul. It was a wonderful weekend with over 50 registered to be marrow donors. Each of the over 25 volunteers, from 14 years old to much older, helped to make this event a success and safely participated in a socially-distanced event, meeting new people and reconnecting with long-time friends.

continue to work to support BeTheMatch to increase donor registration through August 31 for all ethnicities. You can text Hope4PaulWA to 61474 or go to Join.BeTheMatch.org/Hope4PaulWA to request a swab kit.

1. New donors, between the ages of 18 and 44, and of all ethnicities and in any US city, can request a cheek swab kit be mailed to them. Text Hope4PaulWA to 61474 or go to Join.BeTheMatch.org/Hope4PaulWA through August 31 to request a kit. Kits can be mailed back to BeTheMatch using the pre-paid envelope that comes with the kit so there is no cost to the new donor.
2. If you have already previously registered, you can donate until 61 years old, so please contact BeTheMatch at questions@nmdp.org or by calling (800) 627-7692 to recommit and update your contact information.
3. Visit GanbattePaul.com to find additional in-person drive-thru Live Drive events, and share with friends and family in other cities and share with family and friends.
4. Please continue to share the information, find out additional information at BeTheMatch.org. New donors can join at any time through: Join.BeTheMatch.org.

With over 12,000 people currently looking for a match, there remains a huge need to spread the word and continue to increase the number of potential marrow donors. We feel gratified our sangha and community stepped up to do our part in this effort.

Our many thanks to you all.



CBE SEMINARS ONLINE FOR ALL

FREE & OPEN TO THE PUBLIC - REGISTER FOR ZOOM LINK

*Pacific Time - Check local time zone

SATURDAY, APRIL 10, 5 PM - 6:30 PM (*PACIFIC)

SOCIALLY ENGAGED BUDDHISM: Jodo Shinshu Perspectives

What is "Socially Engaged Buddhism"? What are some examples of Buddhist social engagements in Japan and elsewhere? How do we apply the idea of socially engaged Buddhism to a Jodo Shinshu life guided by the Nembutsu?

Guest Speakers:

Prof. Mitsuya Dake

Graduate School of Intercultural Communications, Ryukoku University, Kyoto, Japan



Prof. Dake is on the faculty of Ryukoku University's Graduate School of Intercultural Communications, and is director of its Center for the Studies of South Asia. He received his masters degree from Ryukoku and has completed his Ph.D. courses for literature. His areas of research include: Shinran Thought; Engaged Buddhism; and Inter-faith Dialogue. He serves on the editorial board of the journal, *Contemporary Voices of Dalit*.

Rev. Kiyonobu Kuwahara

Supervising Minister, Berkeley Buddhist Temple Manager, Jodo Shinshu International Office



Rev. Kuwahara has a master's degree in Jodo Shinshu Studies from the Institute of Buddhist Studies and Ryukoku University, and completed the Ryukoku Ph.D. program in Jodo Shinshu studies. He has also served as co-director of the BCA Center for Buddhist Education; coordinator for the Hongwanji Office of the BCA Jodo Shinshu Center; and staff member of the International Department of the Jodo Shinshu Hongwanji-ha.

REGISTER ONLINE ~ FREE

<https://forms.gle/dtkiF6w47Fz4TpCN9>

DONATIONS GRATEFULLY ACCEPTED - CLICK TO DONATE

<https://bca.kindful.com/campaigns/232361?utf8=%E2%9C%93&campaigns=232361&amount=>

VISIT: BUDDHISTCHURCHESOFAMERICA.ORG EMAIL: CBE@BCAHQ.ORG TEL: 510.809.1460



CBE SEMINARS ONLINE FOR ALL

FREE & OPEN TO THE PUBLIC - REGISTER FOR ZOOM LINK

*Pacific Time - Check local time zone

SATURDAY, APRIL 17, 2021 11 AM - 1 PM*

What is the Future of Jodo Shinshu Buddhism in the West?

namo
amida butsu
namo amida butsu

GUEST SPEAKERS: THREE BISHOPS

HAWAII



REV. ERIC MATSUMOTO
BISHOP,
HONPA HONGWANJI
MISSION OF HAWAII

BCA



REV. MARVIN HARADA
BISHOP,
BUDDHIST CHURCHES
OF AMERICA
(NORTH AMERICA DISTRICT)

CANADA



REV. TATSUYA AOKI
BISHOP,
JODO SHINSHU
BUDDHIST TEMPLES
OF CANADA

REGISTRATION - Free [CLICK TO REGISTER: https://forms.gle/1egQ3umNGki4xf1J7](https://forms.gle/1egQ3umNGki4xf1J7)

DONATIONS GRATEFULLY ACCEPTED [CLICK TO DONATE](#)

<https://bca.kindful.com/campaigns/232361?utf8=%E2%9C%93&campaigns=232361&amount=>

Visit: buddhistchurchesofamerica.org email: cbe@bcahq.org tel: 510.809.1460

Save the Date!

2021 FDSTL Conference

Saturday, April 24, 2021



Meeting the Challenges of Today's Dharma School



Keynote Speaker:
Pieper Toyama
Founding Headmaster,
Pacific Buddhist Academy
Honolulu, HI



Please join us
For this
Virtual Conference!

Hosted by: Southern District Dharma School Teachers League
More information to come from the 2021 FDSTL conference committee

2021 BCA YOUTH RETREAT EVENTS

APR 24:
MIDDLE
SCHOOL
SESSION

JUL 12-16:
BYR HIGH
SCHOOL
SUMMER
RETREAT

NOV 6:
BYR &
FRIENDS
REUNION
EVENT

REG INFO
WILL BE
EMAILED TO
YOUR
TEMPLES



Questions please email: bkmizushima@bcahq.org

Dharma School News

submitted by Joyce Tsuji

Dharma School families enjoyed some All-DS family time in the beginning of March with a Zoom event, where we enjoyed sharing with our DS students and families through Flipgrid and live acts. From cooking to music, with so much in between, each performance filled us with warm admiration. We feel very lucky to be part of this supportive community.

We thank our teachers, who continue to engage with our students in our virtual classrooms, which has come upon a whole year online. The Federated Dharma School Teachers League (FDSTL) has supported our Dharma School teachers with various workshops, and on March 13, Bay District Dharma School Teachers League (BDDSTL) and FDSTL co-hosted an online workshop entitled "RIGHT EFFORT: Making Dharma School Classroom Anti-Racist Environments," to which our DS community was also invited. Those who attended were inspired by the presenters, whose ages ranged from teen to senior. The seminar was timely in light of the vicious murders in Atlanta; we are sorrowful and mindful of what our children are hearing and feeling. Below are some links to the documents that were shared with us, which you also may find helpful.

Here's a list of the documents click each for document:

[BDDSTL/FDSTL Anti-Racism Workshop](#)
[An Eight-Fold Path to an Anti-Racist Dharma School Booklist for Right Effort: Making Dharma School Classrooms Anti-Racist Environments](#)
[Essential Teachings Expanded](#)

We strive to make our DS welcoming and inclusive, learning together how the Dharma is relevant in our lives. As Buddhists, we make the effort to reflect, to act against the extremes of hatred, and to assume the responsibility of compassion.

Gassho, Claire and Yvette

Pre K/K Class Feb 2021 Report The Pre-K/K class read a story about the Three Treasures and colored pictures representing the Buddha, Dharma and Sangha. They glued the pictures in a treasure box and decorated it with stickers.

The children also learned how to Oshoko. They watched a video produced by the Buddhist Church of Sacramento that illustrated the proper way to Oshoko. They also colored a book about this so that they will be able to properly Oshoko when they are back at the temple. The students learned about the Six Paramitas and made a project to remind them to follow the Six Paramitas in their everyday life.

For Valentine's Day the children learned that Valentine's Day is the day that we show our love and affection to our loved ones. They also learned that they should show their love everyday and not just on Valentine's Day. They learned the gatha "Buddha Loves You" courtesy of a video by Rev. Harry Bridge from the Oakland temple. They made an accordion book with the lyrics and on the last page they were instructed to insert a picture of themselves to remind them that Buddha loves them too.

March 2021 Thank you to our Pre-K/K students who showcased their talents in the All Dharma School Family Event held on March 7th.

The students received a booklet "The Life of Buddha." Nirvana Day and the importance of animals to the Buddha were emphasized. Students decorated the pages with animal stickers. The booklet also talked about the story of the blind men and the elephant. The students watched a video of the story and assembled and decorated elephants to remind them that peace and harmony are achieved by realizing the whole truth – not just parts.

To celebrate Spring Ohigan, the children learned about how it is the time of year when the weather is not too warm or too cold and the flowers, human beings, animals, and even insects experience the joy of living. They learned about the life cycle of a butterfly and then made their own butterfly and decorated it with stickers.

3/4/5 Class Feb 2021 Our class attended the Dharma and Sangha award ZOOM presentation to celebrate the recipients and listen to their messages and wasans. Students continue to add to their Golden Chains with positive words and deeds, and we sent thoughtful messages on their "BeeKind" Valentine craft to friends, family and neighbors. We reviewed the importance of Nirvana Day and talked about how our pets are teachers to us after the Nirvana Day/Pet Memorial Service. Students shared *continued on p. 16*

their zodiac animal signs and then we made an origami Ox head for the 2021 Lunar New Year.

March 2021 On March 7, our 3/4/5 class attended the All-DS family Zoom event. Students enjoyed supporting and participating in the Flipgrid and live acts together with the larger DS community. Also, this month, we shared memories and facts about Hanamatsuri before making origami paper flowers to be offered at the All-Sangha Kanbutsu event and/or shared at home to celebrate the Buddha's birthday. Happy Hanamatsuri to everybody!



Seattle Betsuin Awards 2021 Scholarships

submitted by Lori Chisholm

The Betsuin scholarships, awarded through generous donations from the Shimokon and Tsujihara families, recognize Betsuin high school and college students. The selection criteria includes leadership and participation in the temple, BCA, school and the community, along with scholastic achievement and a commitment to stay involved in the temple. This year's essay asked how the Gomonshu's address, "A Way of Living as a Nembutsu Follower" applied to the applicant.

The Harold N. & Yoshiko Tsujihara Memorial High School Scholarship recipients:

Evan Kato (Seattle Lutheran HS) has been a Scout for 12 years, earning the Arrow of Light award, Metta Award, Sangha Award and Eagle Scout Award and has held various leadership positions including Senior Patrol Leader. He earned varsity letters in basketball and golf, participated in the Youth Climate Coalition, Math Club, National Honor Society and contributed over 250 hours of community service.

Brent Nakashima (Newport HS) has been a Scout for 12 years, earning the Eagle Scout and Sangha Awards, and has held leadership positions including Senior Patrol Leader. He earned varsity letters in

cross country and track and holds school records. He has a black belt in Karate.

Tai Nakashima (Meadowdale HS) has been a Scout for 12 years, achieving the First Class rank, and was nominated into the Order of the Arrow. He contributed over 80 hours of community service and is described as hard working, humble and kind.

Allison Shibata (Newport HS) has been a Camp Fire member for 13 years and achieved the WoHeLo award, served as Jr YBA President and Vice-President, led the Jr YBA Retreat and played the viola in the Bodhi Ensemble. She was 2-year President of her school's Environmental Club, and earned varsity letters in cross country and track.

The Masaru and Mitsuma Shimokon College Scholarships recipients:

Meghan Horn (Nursing, Gonzaga University) is a member of the Senior YBA, is team captain of the Gonzaga Dance Team and volunteers in the Emergency Department and Nursery at Providence Holy Family Hospital.

Evan Ko (Business Analytics, Seattle University) is part of the Gagaku Music Group, the Seattle Brass Band/Seattle Ukulele Band/Seattle Bodhi Ensemble, and the YABA group. He was the project leader for the NW Convention Android App Development Team.

Congratulations to all our scholarship recipients!

DIAL THE DHARMA

Call the toll free number - 800-817-7918 to hear Bishop Harada's message

Push "1" for English and "2" for Japanese

Please share this phone number with friends, family, and those Sangha members who may not use computers or the internet, to be able to listen to a short Dharma message during this time of sheltering at home.

APRIL SHOTSUKI HOYO

The April Shotsuki Hoyo Memorial Service will honor the memory of those listed below who passed away in the month of April. This service will be combined with the Joint Memorial Service on Saturday, April 10th, at 10 AM and will be livestreamed on the Betsuin YouTube channel - <http://www.youtube.com/seattlebuddhisttemple>.

Arai, Yuki	Hiranaka, Heisaku	Konishi, Tom	Nakanishi, Shizuichi	Shintaku, Tomeko
Arlin, Lillian	Horishige, Setsunosuke	Kono, Asano	Nakano (Infant)	Shiraishi, Eitaro
Asaba, Joanne	Horiuchi, Bisaku	Kosaka, Yosataro	Nakano, Haruko	Shiraishi, Sennosuke
Asaba, Larry	Hoshino, Gayle	Kosugi, Ito	Nakano, Krista	Sudo, Eiko
Asakura, Namijiuro	Ikemura, Terunobu	Kubo, Chiozo	Nakashima, Hidehiro	Sudo, Mamoru
Asakura, Ume	Imabori, Teruo	Kubo, Kazuo	Nakashima, Masao	Suetsugu, Etsuko
Baba, Sadao	Imamoto, Sue	Kubo, Masayoshi	Nakashima, Masato	Sugitachi, Shozo
Baba, Yuriko	Inouye, Hajime	Kubo, Tomi	Nakashima, Nobuo	Sumihiro, Tadakichi
Clem, Cora	Iseri, Sakae	Kunishige, Asakichi	Nakashima, Yoshiko	Suzuki, Tohachi
Dodobara, Masako	Ishimoto, Kiichiro	Kuramoto, Amy	Nakauye, Namie	Tachiyama, Jirosuke
Ekinaka, Fumiko	Ito, Chusaburo	Kurimura, Hatsune	Nakauye, Sadako	Takabayashi, Yonetaro
Emata, Hideji	Ito, Itsuko	Kurita, Mio	Nishimoto, Masao	Takano, Tatsuo
Fujii, Ernest	Ito, Nami	Kurosaki, Kamezo	Nishiyama, Shigematsu	Takashima, Sadamu
Fujii, Kozaburo	Ito, Tsune	Kuwada, Kazuo	Nitta, Bobby	Takashima, Yaoki
Fujii, Minoru	Iwamura, Jiro	Lee, Toh	Nitta, Yoshiko	Takayoshi, Frank
Fujii, Yoshito	Iwamura, Katsuzo	Mack Harada	Ogami, Tayeko	Takemoto, Kazuo
Fujikawa, Taki	Izumi, Yaeko	Maeshiro, Asamitsu	Ohashi, Mokichi	Takemoto, Misako
Fujinaka, Kyuta	Jinda, Tokuyoshi	Masuhara, Ichiyo	Okada, Aino	Takemura, Takematsu
Fujioka, Chikayo	Jinka, Noboru	Masuhara, Kenichi	Okamoto, Masao	Takenaga, Shige
Fujioka, Takeichi	Kadoguchi, Taroichi	Masumoto, Henry	Okamura, Mineko	Takeshita, Kazuko
Fujita, Chozo	Kanegae, Roy	Matsuda, Masaru	Okuma, Linda	Tamahiro, Makino
Fukuhara, Tadashi	Kano, Nobuyoshi	Matsui, Melvin	Omoto, Tokutaro	Tamura, Tokio
Fukuma, Yonekichi	Kano, Shigeo	Matsui, Mitsue	Omura, Kaichi	Tanagi, Nobuo
Furugori, Shohei	Kashiwamura, Naoichi	Matsui, Shinsuke	Osaki, Taisei	Tanaka, Masaye
Furukawa, Yosajiro	Katayama, Akira	Matsumoto, Ben	Oseki, Isamu	Tanemura, Masao
Furutani, Masao	Katayama, Chima	Matsumoto, Riwa	Ota, Masutaro	Tani, Denkichi
Glass, Nadine	Kato, Hisako	Matsumoto, Senzo	Quiett, Kathleen	Tomita, Shigeno
Gojio, Shōtaro	Kato, Kuniye	Matsumoto, Shige	Ryu, Jutarō	Tsubokawa, Terumi
Greer, Matsue	Kato, Masao	Matsumoto, Thomas	Saiki, Ululani	Tsuchida, Tetsu
Groves, Fumiko	Kato, Mitsu	Matsumoto, Toramatsu	Sakaguchi, Chitose	Tsujita, Yaozo
Hagimori, Kaoru	Kawahara, Makie	Matsumura, Toshio	Sakamoto, Akiyo	Tsukamaki, Asako
Hagimoto, Shuichi	Kawanishi, Teikichi	Matsuno, George	Sakamoto, Leah	Tsunehara, Paul
Hamamoto, Fumi	Kawasaki, Ai	Mayeda, Fred	Sakamoto, Tadazo	Tsutsui, Komatsu
Hamanaka, Takematsu	Kawasaki, Kameichi	Mayeda, Torataro	Sakoda, Ittoku	Tsutsumi, Peter
Hamano, Rokuemon	Kawasaki, Victor	Mikami, Takumi	Sakoda, Teru	Umeda, Isamu
Hanada, Iwao	Kido, Edward	Mitchell, Peggy	Sakuma, Cedric	Umeda, Sam
Hanada, Seiji	Kihara, Yayeko	Miyake, Yukiko	Sakuma, Hisakichi	Uno, Sue
Hara, Ricky	Kimura, Frank	Mizokawa, Shigeo	Sakuma, Katherine	Urakawa, Yoshio
Harada, Kazuto	Kimura, Haruyo	Mizuhata, Michiko	Sakuma, Yasuji	Usui, Chise
Harada, Toshio	Kimura, Kikuno	Mizuhata, Sueko	Santon, Tamiko	Uyeda, Nobukazu
Haraguchi, Mitsuru	Kimura, Tadaichi	Mizuki, Hagino	Sasaki, Moto	Uyeminami, Kikuichi
Harrison, Mitsue	Kishida, Yaso	Mizuta, George	Sasame, Teru Kan	Uyenishi, Taichi
Harui, Norio	Kitashima, Richard	Mizuta, Kimi	Sato, Tsunejiro	Wittshirik, Hiromi
Hasegawa, Maru	Kobayashi, Hidenori	Morimoto, Tatsumaro	Seko, Hatsuno	Yabuki, Ryoto
Hasegawa, Ryosuke	Koga, Kichisaburo	Morisaki, Harry	Senba, Sunao	Yamada, Asaichi
Hashimoto, Utaro	Kolby, Chin	Moritani, Shigeru	Shibata, Tom	Yamaguchi, Moto
Hata, Carmen	Komatsu, Hisakichi	Mukai, Kuni	Shigaya, Mary	Yamamoto, Kay
Hayasaka, Teruko	Komizu, Sadakichi	Nagai, Rikichi	Shimada, Masato	Yamamoto, Suematsu
Hayashida, Setsu	Komorita, Kaga	Nagai, Tamotsu	Shimasaki, Kamezo	Yamane, Shizue
Hayashida, Tani	Kondo, Keiji	Nagamatsu, Kimiko	Shimizu, Kenzo	Yanagawa, Shigeto
Higashi, Hatsune	Kondo, Komazo	Nagata, Inori	Shimizu, Takeo	Yorita, Teruo
Higuchi, Toyoko	Kondo, Teruko	Nakahara, Shohei	Shinbo, George	Yoshida, Jukichi
Hino, Junichi	Kondo, Yo	Nakamura, Alan	Shinoda, Kimi	Yoshihara, Fujiko
				Yoshijima, Yoshihisa

APRIL 2021 BETSUIN SCHEDULE

	Sunday	Monday	Tuesday	Wednesday	Thursday	Friday	Saturday
	<p><i>To view all services, please visit http://www.youtube.com/seattlebuddhisttemple</i></p> <p align="center">MAY 2021 SPECIAL EVENTS</p> <p>May 1 English Spring Nembutsu Seminar on Zoom with Rev Dr Nobuo Haneda May 3 Japanese Spring Nembutsu Seminar on Zoom with Rev Dr Nobuo Haneda May 9 Rennyo Shonin Memorial Service May 16 Betsuin Gotan-e Service May 23 NW Ministers Gotan-e Service</p>						
4	9 am Meditation on Zoom 10 am SUNDAY SERVICE streamed on YouTube English Dharma Talk (Meya Stout) Japanese Dharma Talk (Rinban) 11am DX (Rev Goto, Chris Grabowski - Taoism) 12-2 pm Hanamatsuri Outdoor Kanbutsu	5 10 am livestream Morning Service 11 am Seattle Japanese Dharma Gathering - Zoom	6 <i>Rinban's day off</i>	7 10 am livestream Morning Service 11 am Sutra Chanting & Dialogue - Zoom	8	9 <i>Rinban's day off</i> 10 am Japanese Play Group on Zoom	10 10 am livestream Joint Memorial Service combined with April Shotsuki Hoyo Memorial Service
11	9 am Meditation on Zoom 10 am HANAMATSURI SERVICE streamed English Dharma Talk (Rinban) Japanese Dharma Talk (Guest speaker, Rev Kazuaki Nakata, Central District) 11am DX (Rinban - "My Life in Zimbabwe")	12 10 am livestream Morning Service 11 am Seattle Japanese Dharma Gathering - Zoom	13 <i>Rinban's day off</i>	14 10 am livestream Morning Service 11 am Sutra Chanting & Dialogue - Zoom	15	16 <i>Rinban's day off</i>	17 10 am livestream Joint Memorial Service 2-3 pm Gagaku practice
18	9 am Meditation on Zoom 10 am EARTH DAY MUSIC SERVICE streamed English Dharma Talk (Rev Castro) Japanese Dharma Talk (Rinban) 11 am DX (Rev Goto, Trevor Yokoyama - YBE) 12 pm SBBWA New Member Tea	19 10 am livestream Morning Service 11 am Seattle Japanese Dharma Gathering - Zoom	20 <i>Rinban's day off</i>	21 10 am livestream Morning Service 11 am Sutra Chanting & Dialogue - Zoom	22	23 <i>Rinban's day off</i> 10 am Japanese Play Group on Zoom	24 10 am livestream Joint Memorial Service-CANCELED 12-3 pm Salmon Dinner Fundraiser
25	9 am Meditation on Zoom 10 am NW PRINCE SHOTOKU MEMORIAL SVC English (Guest, Rev Iwohara, Gardena) Japanese (Guest, Rev Iwohara, Gardena) 11:00 am DX (Naijin Tour with Rinban)	26 10 am livestream Morning Service 11 am Seattle Japanese Dharma Gathering - Zoom 8 pm Newsletter deadline	27 <i>Rinban's day off</i>	28 10 am livestream Morning Service 11 am Sutra Chanting & Dialogue - Zoom	29 10 am Japanese Play Group on Zoom	30 <i>Rinban's day off</i>	

Seattle Buddhist Church
1427 S Main Street
Seattle, WA 98144

2021 April
Wheel of the Sangha
A Monthly Newsletter of
Seattle Buddhist Church

YBE'S BOOK CLUB FOR
OPTIMISTIC PEOPLE:
[https://
www.youngbuddhisteditorial.com/
bookclub](https://www.youngbuddhisteditorial.com/bookclub)

2021 FAMILY MEMORIAL SERVICE SCHEDULE

In the Jodo Shinshu tradition, family memorial services are held on designated anniversaries to express gratitude and recall cherished memories of our loved ones while listening to the Buddha Dharma. While the Temple is closed due to the Covid-19 pandemic, Rinban Kusunoki will read your loved one's name during the Joint Memorial Service livestreamed on most Saturdays at 10 am or will conduct a virtual service for your family and friends. If you have a family member who passed away in the following years, you are encouraged to hold a memorial service in 2021:

<u>Year of Death</u>	<u>Service</u>
2020	1st year memorial
2019	3rd year memorial
2015	7th year memorial
2009	13th year memorial
2005	17th year memorial
1997	25th year memorial
1989	33rd year memorial
1972	50th year memorial

Please call the Temple office at (206) 329-0800 to schedule a service.
- JN

Updated Live-Streamed Service Schedule

<https://youtube.com/seattlebuddhisttemple>

Monday, 10:00 AM Service

Tuesday, No Service

Wednesday, 10:00AM Service (&

11:00 AM Sutra Chanting and Dialogue*)

Thursday, No Service

Friday, No Service

Saturday, 10:00 AM Service

Joint Memorial(Canceled on April 3, 24)
Shōtsuki Hoyo on April 10

Sunday, 10:00 AM Service Virtual, Pre-recorded

New! Now!
One (1)
Dharma Exchange
Every Sunday
via Zoom
11:00 - 11:30AM
See p. 8 for
Discussion
Topics

Dharma Exchange
Link

[https://
ip.constantcontactpages.c
om/su/rjidJgn/
betsuinweekly](https://ip.constantcontactpages.com/su/rjidJgn/betsuinweekly)

Contact Us

Seattle Betsuin
Buddhist Temple
1427 S Main Street
Seattle, WA 98144

Phone: 206. 329.0800
Fax: (206) 329-3703
office @SeattleBetsuin.com
SeattleBetsuin.com

Office Hours
Call for recorded
updates and for
emergencies

Wheel of the Sangha Editors
Irene Goto, English: newsletter@seattlebetsuin.com
Machiko Wada, Japanese: newsletter-jpn@seattlebetsuin.com
Deadline is the third Monday each month at 8PM

Minister 24 hours
206.779.2214