



Seattle Betsuin Buddhist Temple, A Shin Buddhist Temple,  
Jodo Shinshu Nishi Hongwanji-ha

a monthly newsletter of Seattle Buddhist Church  
**Volume 39 Issue 12**  
online only

## Music in the Pure Land

by Rimban Katsuya Kusunoki

More than three and a half years have passed since I was assigned to Seattle Betsuin. One thing I was impressed by in the Betsuin's service program is the plentiful music. Seattle Betsuin Sangha sings a variety of Buddhist Gathas. Instrumental, Taiko, and Choir performances are often included in the service program. Although I am not very musical, I learned Gagaku (ceremonial court music of Japan) in Japan. So, I launched the Seattle Gagaku group three years ago. The gagaku group is practicing monthly by Zoom now. The group performed Gagaku when the Chigo procession took place during the Eitaikyo service, the Betsuin anniversary, last year.

Gagaku has three kinds of wind instruments. The first one is called Hichiriki which produces the main melody. The volume of Hichiriki's sound is so loud. It is said that Hichiriki expresses the sound of earth where we live. The second one is called Sho or Ho Sho. The sound is like a harmonica or a pipe organ. Sho produces chordal sound. It is said that Sho expresses the sound of heaven where the phoenix lives. The last one is called Ryuteki. It is like a flute and supports the main melody. It is said that Ryuteki expresses the voice of the dragon that comes and goes between earth and heaven. It is also said that the music produced by these three instruments expresses a microcosm.

Some people may wonder if gagaku music is for Shintoism (the traditional polytheistic religion of Japan). But I learned that Gagaku has a history of being performed at Buddhist temples, as well. Gagaku was introduced into Japan along with Buddhism around 600 - 700 ACE from China and Korea. Have you ever been to Todaiji temple in Nara, Japan? There is a great statue of Buddha there. Gagaku was performed at the consecrating ceremony for the Buddha in 752 ACE. Gagaku is also performed at our Jodo Shinshu temples. If you have chance to attend a major service at our mother temple Hongwanji such as Hoonko service and Ohigan service, you will see some designated ministers performing gagaku during the services. Gagaku was also performed at the closing service during the 2020 BCA National Council meeting and NW Convention in Renton, Washington last year.

We are the followers of Jodo Shinshu (True Pure Land Buddhism).

continued on p. 2...



Rev. Kusunoki demonstrates hichiriki

## Join Seattle Betsuin's Virtual Programs

*We have ongoing Book Study, Meditation, Dharma Exchange. See information on p. 10 and below on how to join virtually.*

Weekly Meditation at 9:00AM on Sundays. Contact Leonora Clarke ([clarkel@uw.edu](mailto:clarkel@uw.edu) for a Zoom link).

Next Seattle Betsuin Book Study will meet on Saturday, December 12, at 9:30AM. See info on p. 6.

To receive Zoom links to Buddhist Book Study, Sangha Exchange, and DS Dharma Exchange, go to [newsletter@seattlebetsuin.com](mailto:newsletter@seattlebetsuin.com) and specify the group in the subject line. You will be emailed a link.

## Sunday and Weekday Morning Services Online:

<https://youtube.com/seattlebuddhistemple/>  
Search "playlists".

### ...Rimban's Message continued from p. 1

The guidance of the Pure Land is one of the most important teachings for us. How do you understand and appreciate the Pure Land? Some people understand that the Pure Land is like Disney Land or the place where your dreams come true. Some Japanese people use an expression "it is just like the Pure Land" when they bathe in Onsen hot springs. It seems that everyone has a different perspective of the Pure Land. Therefore, it is necessary to consider specialists' works of the Pure Land. These are called "The Three Pure Land Sutras". There are various expressions and descriptions on the Pure Land in these Sutras. There is a description on the Pure Land using music as an example. Our founder Shinran Shonin wrote a hymn (wasan) based upon the description.

The delicate, wondrous sounds of jewel-trees  
in the jewel-forests  
Are a naturally pure and harmonious music,  
Unexcelled in subtlety and elegance,  
So take refuge in Amida, the music of purity  
(CWS P. 39, Hymns of the Pure Land)

Let me share my appreciation of this hymn. There are various jewel trees in the Pure Land. A gentle breeze blows and shakes the leaves and produces elegant sounds. There are no words to describe the beautiful sounds. These sounds naturally harmonize and produce unexcelled music. Whoever hears the music, Wisdom and Compassion spontaneously rise in their heart. Amida Buddha prepared the Pure Land for us to attain enlightenment. We just follow Amida Buddha's guidance.

In the Pure Land, the sound and voice of the breeze, shaking leaves, waves, and birds produce the sound/music of Dharma ceaselessly. This means that the Pure Land is completely filled with the sound of Dharma. There is no room at all where anything else seeps in. There is no room for our greed, anger, and ignorance to be present. Our human attachments (Bonno) cannot exist in the Pure Land. Therefore, there is no Duhkha, human suffering and pain there. Whatever we possess in the Human world, we cannot carry them into the Pure Land at all. Therefore, we all attain enlightenment without fail once we are born into the Pure Land.

In this human world, we can hear the Buddha Dharma. However, unfortunately our life is not filled

with Dharma. Most likely, we, Bonbu (ordinary beings) put Dharma away and our life is filled with our desire and ego. There is no way to extinguish a flame of our blind passions. Amida Buddha could not abandon these people and prepared the Pure Land and the Path to the Pure Land. Our founder Shinran Shonin revealed that it is the path for us and tells us to follow its guidance.

In Jodo Shinshu, we recite Namoamidabutsu which means I take refuge in Amida Buddha. Amida Buddha condensed all virtue into Namoamidabutsu for us and sends it to us. I appreciate that recitation of Namoamidabutsu is an aspect of the music of the Pure Land coming out from our mouth. Then, I truly understand that the Pure land is working here and now to deliver the Dharma to me. It is such a grateful aspect.

We are Jodo Shinshu (True Pure Land Buddhism) followers. We learn from the Pure Land, listen to the Pure Land, walk our life toward the Pure Land, and reflect upon our life and our world through the Pure Land. It is the way of Jodo Shinshu follower's life. I shared my appreciation of music in the Pure Land today. Please think about the Pure Land while listening to music. ###

### Updated Live-Streamed Service Schedule

<https://youtube.com/seattlebuddhisttemple>

Monday, 10:00 AM  
Morning Service

**Tuesday, No Service**

Wednesday, 10:00AM AM  
Morning Service (& 11:00 AM  
Sutra Chanting and Dialogue\*)

Thursday, 10: 00 AM Morning  
Service

**Friday, No Service**

Saturday, 10:00 AM Joint  
Memorial Service,  
Sunday, 10:00 AM Pre-recorded  
Virtual Sunday Service (&  
Dharma School and Sangha  
Exchanges at 11:00AM\*)

\*Email

webmaster@seattlebetsuin.com and  
see p. 10 for more information.

# Betsuin Tea Talk with Leanne Nishi-Wong



Photo by Tomi Zumoto

As 2020 comes to a close, I was reminded at the last Board of Directors' meeting, that keeping the Seattle Betsuin members and friends updated on the Temple events is something that should be done on a regular basis. Please feel free to email me at [seatlebetsuinchairperson@gmail.com](mailto:seatlebetsuinchairperson@gmail.com) if you ever have questions, comments or concerns.

The Betsuin is fortunate to have excellent employees and volunteers who have been hard working, flexible and creative in bringing the Dharma teachings to you at home.

The closure has allowed the Betsuin to start projects that would have interfered with in-person daily events and activities. The small bathroom next to the Nokotsudo, the flower room and the kitchenette on the Memorial Hall side are in the process of being remodeled. The small bathroom and flower room are being combined to accommodate an ADA bathroom. The kitchenette will not only be utilized for its current purpose, but allow the flower arranging group a comfortable space as well.

The Temple, parsonages and park continue to be maintained by the Maintenance Committee. They have also cleaned, scraped and painted the floors in the main kitchen, pantry and walk in refrigerator.

Organizations within the Temple have collected, donated, or are in the process of donating, money and items to non-profits who shelter and feed our community neighbors. The organizations have written about their endeavors in this newsletter.

If you would like to record a reading for an upcoming service, please contact me for details. It is nice to see Sangha participation in the weekly presentations.

Look for upcoming events in the weekly email blasts, Facebook postings or the Temple website. There will be a New Year's Eve Service, a New Year's Day Service, the Annual New Year's Party and the General Meeting. Information will be posted soon.

Thank you for your support of the Betsuin. The Dharma teachings, Temple maintenance and employees could not be sustained without your generosity.

Gassho,  
Leanne



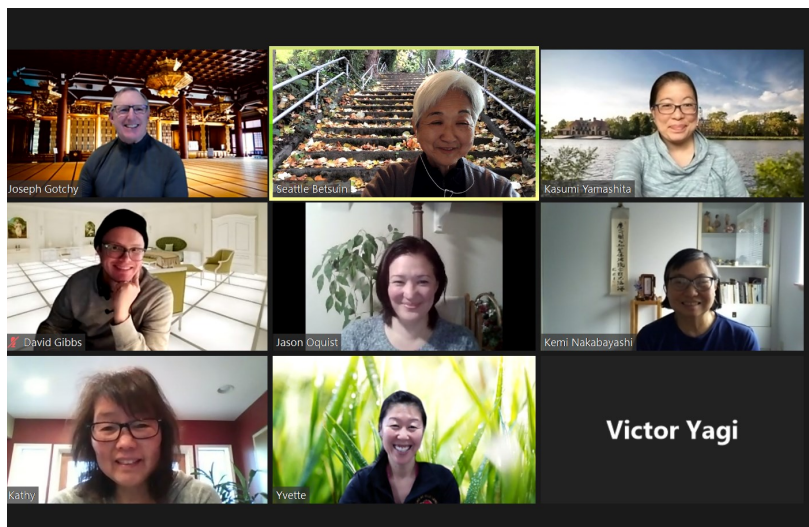
## Eitaikyo Drive by Omairi @ the Seattle Betsuin

Covid quarantine has changed all our lives, including attending Sunday services at the Betsuin. Since the end of February, many have missed coming to the Temple to *Omairi* (pay respect to the Amida Buddha). The Betsuin had an altar **outside of Memorial Hall** for anyone who wished to *Omairi* on Saturday and Sunday, November 14, 15, from 12:00pm-2:00pm. COVID limitations, maintaining 6 foot distances, wearing a mask and asking not to enter the Temple were still in place. Bringing one's own *Senko* (incense stick) was suggested, or to simply *gassho* in front of the altar. *Thank you, Sensei, Ayano-san, Yuiya, Leanne, and Connor for arranging this.* Gassho - IG



# ZOOM KEEPS OUR LINKS BRIGHT AND STRONG

**Meditation** meets each Sunday mornings at 9:00AM—9:45AM. We start with a few minutes of catching up, open with SanBujo, Sitting in Gratitude Meditation for 20 minutes, chanting of Nembutsu and close with more catching up. If you would like a link to join us on Zoom, email newsletter@seattlebetsuin.com and specify SBC Meditation. Please join us.



**December Sangha Exchanges** will be on December 6 and 20 at 11:00AM. Please find the Zoom links in the Weekly E-News prior to the given Sunday or email requests to newsletter@seattlebetsuin.com.

## Seattle Betsuin’s 12th Annual Music Service welcomed guests from Northwest Buddhist temples -



Yakima Buddhist Church by Gabriella Mondragon who read Shinran Shonin’s 39th Wasan praising the “pure and harmonious music” of the “jewel-forests”; Idaho-Oregon Buddhist Temple by Rev. Kathy Chatterton who rang kansho. Yakima Buddhist Church is located in Wapato, Washington; Idaho-Oregon Buddhist temple is located in Ontario, Oregon. Rev. Melissa Opel of Spokane Buddhist Temple read Golden Chain II. Rev. Yuki Sugahara of Oregon Buddhist Church, played Ondokusan on electric guitar; Rev. Tadao Koyama, Junko Nakano, and Dennis Yamashita joined Rev. Kusunoki in singing Juseige. “I Am a Link in the Golden Chain” by Gordon Ah-Tye was performed by Shirakawa Strummers; “My Pain, My Joy” by Miko Shudo and Masami Amakawa and “Namo Amida Butsu” was performed by The Cherry Blossomz (Lisa Horikawa, Emily Yoshihara and Miko Shudo) See Kemi Nakabayashi’s Musical Notes on p. 8 for more details. Submitted by Irene Goto



## ON BEHALF OF THE MEMBERSHIP COMMITTEE...We

would like to “thank” the following for contributing their 2020 sustaining membership dues - the basic dues towards Temple maintenance/operations and programs. The minimum for individual membership is \$400 (for under 70 years of age), and \$350 (for 70 years of age and over).

*Steven Aisaka, Eric Ashihara, Lisa Barr, Jenni Chin, Janice Deguchi, Jimmy Eng, Steve Harada, Steve Hasegawa, Michiko Hirata, Larry & June Iwafuchi, Kazue Kato, Arthur & Sally Kawaguchi, Rick & Karina Kawaguchi, William & Beth Kawahara, Yoshie June Kosai, Kris Kosugi, Michael Kramer, Teruko Nakamichi, Ryan & Stacy Nakata, Naomi Takemura, Susie Taketa, Jay Taylor, Michael & Gayle Teramoto, Henry & Christine Watanabe, Rob Weinsheimer & Kari Palmer, Marissa Wong, Ken Yocom & Anna Tamura, Jeff & Susie Yamane*

We'd like to 'WELCOME' **Marissa Wong** as a new member to our Sangha.

(Compiled by Howard, Joan, Pauline & Steph)

## DS students support sock drive, write, paint and tell stories

As we approach the end of 2020, we just want to say thank you for all the support the sangha has given to DS. Thank you to our DS Board and teachers who have creatively pivoted to planning and carrying out plans for a virtual year, as well as to our youth program advisors and leaders who also continue to keep our youth engaged. We feel very fortunate that under the leadership of Reverend Kusunoki, Leanne Nishi-Wong and the Seattle Betsuin Board, our sangha continues to thrive with weekly Sunday services and many opportunities to continue listening to the Dharma through Dharma exchanges, special services, newsletters, workshops and Obon, just to name a few! Our various temple groups, such as DS, feel very supported and encouraged.

During the fall, our DS and Seattle Betsuin Buddhist Women's Association partnered to reach a goal of collecting 500 socks to help support Seattle's Operation Nightwatch. It was exciting to watch the weekly upward progress, and with the amazing support of our sangha, friends and family, we MORE than DOUBLED our goal at 1214, with donations still coming in! Our hope that in the spirit of Dana through actions like supporting the sock drive, we are all inspired to find more ways to keep our links “bright and strong,” with a wish for the world that “we all attain perfect peace.” Happy Bodhi Day and happy holidays!

### Classroom Reports

3/4/5 grade With Dharma School's 3rd mailing to our senior sangha members approaching, our stu-

dents reviewed how to write a friendly letter and spent our class time writing a few Bodhi Day/holiday cards together. We would like to encourage other students and families to send in batches of cards to the main office, so our senior sangha members know that we are continually thinking of them, especially during the holiday season.

6/7/8 gradeThe middle school class has been meeting every Sunday. This year, Jodo Shinshu concepts are the main focus of learning. In September and early October, Claire led the students in learning about Tariki (naturalness), the Primal Vow, Other Power, Shinjin and the Nembutsu through storytelling exercises and discussion.

The students worked on their story-telling skills in preparation for the Halloween party they hold annually the entire Dharma School. This year, over zoom, everyone could see each other's fantastic costumes. The party went out into breakout rooms per grade, where middle school students read Halloween themed picture books. Thank you to Claire and the students for your great efforts in a wonderful program that was enjoyed by all!

In November, the students are revisiting the Jodo Shinshu concepts through art exercises, in which the viscosity of different water materials -- watercolor and acrylic paint -- act as natural causes and conditions that make up the underlying image. Students diagrammed the concepts into these images. In another artwork, students drew rays of boundless wisdom and compassion with watermedia, and then transferred an image of Amida Buddha on top of the rays in color pencil.

- Joyce Tsuji



# A Letter from Ellen Hale

Hi, Everyone,

I read with great interest in the November newsletter the history of the scrolls and statues in the Memorial Hall Chapel and was gratified and, I guess, flattered to read the Gandhara statue was “donated by a friend of Ellen Hale.” Although it was, indeed, donated by a dear friend of mine, I deserve none, or very little, of the credit for my friend, Katherine Keen, making the donation to the temple should, in reality probably, go to Rev. Don Castro, who offered an introduction to Buddhism class for Bon Odori visitors. Katherine (who was Unitarian, and within that circle, atheistic) took a series of these classes, and following them offered the statue to the temple through Rev. Castro. (I can remember his saying “she just had it sitting on her fireplace hearth with a stuffed animal in its lap!”)

I’d like to tell you a little more about Katherine. She was a WAAC in World War II and served with the OSS, (the precursor to the CIA), in London during the war. She got her teaching degree from Columbia Uni-

versity on the GI Bill and taught senior high history in Washington DC until she retired. She traveled the world most summer vacations, often hooking up with tours for archaeologists and other historians and bringing back historical items, often for her students to see and gain further appreciation of other cultures.

Katherine’s uncle, Walter Keene, has a history with our temple, too. A lawyer who served on the corporation of the Seattle Buddhist Mission Society that made it possible for our temple to purchase property in Washington state. Then in 1912 a new corporation was formed by the temple to build a hospital for the community and he, his wife, and law partner served on its board, Nihon Byoin, (Reliance Hospital). The hospital went bankrupt after the 1918 flu epidemic after offering free care.

So, that’s my little history lesson for today.

Gassho,  
Ellen Hale

[Ellen is a member of Archives Committee; office received her letter on November 20, 2020 and she gave permission to post online - Irene Goto]

## Buddhist Book Study

met on Saturday, November 14, 2020. Rick Stambul’s Zoom lecture titled, “Good Trouble” was noted as timely. Recommended were Rev Jon Turner’s blog at [EverydayBuddhist.com](http://EverydayBuddhist.com). Enroll in EverydayBuddhist.com, *Taking Amida Buddha’s Vows as Our Own*, presented by Rev. David Matsumoto for discussion on December 12, 9:30AM. Email [newsletter@seattlebetsuin.com](mailto:newsletter@seattlebetsuin.com) for Zoom link.

Submitted by Irene Goto



## EVERYDAY BUDDHIST

[Everyday Buddhist.teachable.com](http://EverydayBuddhist.teachable.com)

When you subscribe for \$95 per year (or \$10 per month) you get unlimited access to 12 NEW Courses and support our mission to share contemporary Shin Buddhist practices for everyday life. You will no longer have to pay for courses individually and you will still have access to all courses you previously enrolled in or paid for. And that is just the beginning as we will continually be adding more courses and features to the EVERYDAY BUDDHIST experience: <https://www.everydaybuddhist.org/> or <https://everydaybuddhist.teachable.com/> - IG

# Seattle Betsuin Buddhist Women's Association

Submitted by Janie Okawa **SBBWA's Mission is to cultivate religious awareness as Jodo Shinshu Buddhist women and promote fellowship among its members; to serve and support the Seattle Betsuin, and contribute services to the welfare of the community.**

Thank you, everyone! We did it! With your generous donations SBBWA and Dharma School collected 1214 pairs of socks surpassing our goal of 500 to donate to Operation Nightwatch's Sock It To Homelessness. A big thank you to our organizers, Janet Baba, Judith Nakamura, Fran Shintaku, Thy Moriguchi-Pham, Yvette Terada, and Kathy Hasegawa. They arranged for home pick up, and drop off locations (Janet, Judith, Fran, Nina Tomita-Kato, Terada family, Victoria Hill family, Victor Yagi family, Automotive Brake & Services, and Janie Okawa).

The temple drop-off during the Eitaikyo 'Drive By' Omairi Service was a big success (and fun to see each other from a distance!). Janet, Judith, and Kiyo Takashima provided snacks for the 24 people who stopped by with 698 pairs of socks! Also 27 hats and scarf sets made by Mrs. Toyoshima were donated to Operation Nightwatch.

A special thank you for Carol Aoki-Kramer who organized a zoom 103rd Birthday Celebration for SBBWA member Mariko Mano! Everyone shared special thoughts with her, and enjoyed seeing each other. *Mariko is pictured below in screenshot.*



[Fran Shintaku and Janet Baba celebrate with the first customer, Dennis Yamashita]



[Ayano and Yuiya with Leanne Nishi-Wong at the temple 'Drive Through']

AND ALL OF YOU did it!! What a success and thanks to all of you and especially those who worked hard to coordinate all the efforts, we more than doubled our goal.



[Karen Akira, Kiyo Takashima, Janet's friend, Fran Shintaku, and Janie Okawa at the socks & snacks car]

## Upcoming events:

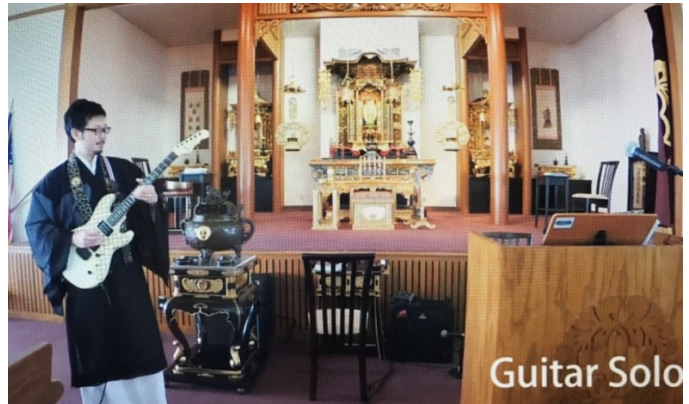
- Board mtg - Dec. 6, 2020 12pm
- tentative project with Jr. YBA - collect toiletries & make masks for Orion Center



# Musical Notes by Kemi Nakabayashi

Many thanks to Alex Sakamoto and Connor McKinney for supporting the major efforts last month to produce the Eitaikyo/Seattle Betsuin Anniversary Service followed by the 12<sup>th</sup> annual Autumn Music Service for back to back Sunday service premieres. They have been doing an amazing job integrating the music to create a seamless production.

Months of advanced planning were required to produce the music service in a virtual format and to include participants from all the temples in our Northwest District and special guest musicians. We were delighted to include Rev. Kathy Chatterton from Idaho-Oregon Buddhist Temple for kansho, followed by *Vandana* and *Ti Sarana* led by Rev. Tadao Koyama from Tacoma Buddhist Temple with Rev. Kusunoki, Junko Nakano and Dennis Yamashita. They also recorded *Music Service Juseige* and *Nembutsu* with *Ondokusan II* as the eko. Rev. Yuki Sugahara and Rev. Kusunoki provided the English and Japanese Dharma messages, respectively. Readings were done by Rev. Melissa Opel from Spokane Buddhist Temple and Gaby Mondragon representing Yakima Buddhist Temple. The White River Buddhist Temple Shirakawa Strummers produced an outstanding gatha video of *I'm a Link in the Golden Chain* by Gordon Ah Tye, a temple leader from Fresno Betsuin. Don Gardner recorded and compiled the individual audio tracks and photos for the video for Kendall Kosai's review. To highlight this collective production, the Cherry Blossomz singers from California provided a new musical offering *My Pain, My Joy* written by Miko Shudo singing along with Lisa Horikawa and Emily Yoshihara. Emily was also featured with a koto solo. *Namo Amida Butsu* written by the Cherry Blossomz and Miharu Okamura was also presented. If you missed the premiere of this music service on November 22 or other past services, please check out the archived online service videos.



Guitar Solo

A viewer commented that Rev. Sugahara "rocks the Dharma world"!









12th Annual Music Service 2020-11-22

Rev. Kusunoki demonstrated the sho in his Dharma talk about gagaku music.

I'm a link in the golden chain.  
Harmony may we all attain.  
Gentle to all living things will unite us all as golden rings.  
I'm a link in the golden chain, gratitude may we all attain.  
Bright and strong my link will grow through pure and loving deeds I know.

Pure and beautiful thoughts I will think and pure and beautiful words I will say, and pure and beautiful deeds I will do for the world and for you.....  
Spreading kindness and love every day to all living things that come our way.  
Amida's chain of love is bright through peace and love we will see the light, through peace and love we will see the light.

Some of the Shirakawa Strummers from White River Buddhist Temple, Judy and Don Gardner, far right, organized and produced the gatha video.



From the new video *My Pain, My Joy* performed by the Cherry Blossomz:  
Emily Yoshihara, Lori Horikawa, and Miko Shudo

*Thank you, Kemi, for the joy your piano accompaniment, arrangements, and tireless coordinating of special music services the past 12 years have given us. Gassho - IG*



# BCA J.A.M.S.

Jodo Shinshu Artists & Musicians Showcase

-Calling All Musicians, Singers,  
Magicians, Dancers, Poets...

-Perform in the 1st annual BCA Youth  
Concert.

A fun and exciting virtual event for  
everyone to enjoy!!!

-Submit your 3-5 min. audition video at  
the link below (due Nov 1st)

-Questions: email "Koichi"  
bkmizushima@bcahq.org

**EVENT DATE:** **JAN10**  
**1:00PM PST** **2021**  
DONATIONS APPRECIATED

Audition: <https://forms.gle/UjsjBkAZChbXrKYT8>

## Shin Buddhist Study Series

### Special Lecture 1

Topic: The Larger Sutra Volume 1 "The Forty Eight Vows"  
Date: Wednesday, December 23rd  
Time: 11:00 AM - 12:00 PM

Lecturer: Rev. Henry Adams (San Mateo Buddhist Temple)



### Special Lecture 2

Topic: The Larger Sutra Volume 2 "Topic: T.B.D."

Date: Wednesday, December 16th

Time: 11:00 AM - 12:00 PM

Lecturer: Rev. Dr. Takashi Miyaji (Southern Alameda  
County Buddhist Church)



### Special Lecture 3

Topic: The Contemplation Sutra "Topic: T.B.D."

Date: Wednesday, February 3rd

Time: 11:00 AM - 12:00 PM

Lecturer: Rev. Dr. Mutsu Wondra (Orange County  
Buddhist Church)



Email [rev.kusunoki@seattlebetsuin.com](mailto:rev.kusunoki@seattlebetsuin.com) for details or  
sign up for our email list at the link below. Zoom links will  
be provided via email to those who sign up



SEATTLE BETSUIN BUDDHIST TEMPLE

[www.seattlebetsuin.com/fallstudy](http://www.seattlebetsuin.com/fallstudy)

Rev Adams was excellent!

Don't miss the next two!

## Center for Buddhist Education (CBE) YouTube Channel

<https://www.youtube.com/buddhistchurchesofamerica>

## Message from Bishop Marvin Harada

**The Meaning of "Arigatai"** Japanese Buddhism is rich with wonderful words and expressions that are hard to translate into English. Words like *Okagesama*, thanks to others, or *mottainai*, which can mean "don't waste," are hard to truly translate. There is something lost in translation.

There is another beautiful expression that I would like to share and explain today. It is the word, "Arigatai." *Arigatai* literally means "hard to exist," or "hard to be," as in "rare" or "wondrous." Buddhism is pointing to the "rare" and the "wondrous" in our lives that we do not see, or take for granted.

The first thing that is rare and wondrous, is life itself. We all know that to win the lottery, the odds of winning are astronomically difficult. Something like 300 million to one. Not one in a million. 300 million to one. Sometimes I wonder why I buy a ticket when the jackpot gets really big, but I dream of hitting the lottery just like everyone else..- [buddhistchurchesofamerica.org](http://buddhistchurchesofamerica.org)



Rev. Marvin Harada, Bishop,  
Buddhist Churches of America

## SEATTLE BETSUIN BUDDHIST TEMPLE

Practicing in the Jodo Shinshu Tradition

- Wednesday chanting, sutra study, and dialogue led by Rimban Kusunoki. See "Full Calendar" on <https://seattlebetsuin.com> and email [webmaster@seattlebetsuin.com](mailto:webmaster@seattlebetsuin.com) for meeting link.
- Seattle Betsuin Book Study meets Saturday morning once per month. Email [webmaster@seattlebetsuin.com](mailto:webmaster@seattlebetsuin.com) for meeting link.
- Sitting in Gratitude Meditation meets Sunday mornings at 9:00AM. Email [webmaster@seattlebetsuin.com](mailto:webmaster@seattlebetsuin.com) for meeting link.
- Seattle Betsuin YouTube Channel for live-streamed and recorded Sunday and weekday morning services: <https://www.youtube.com/seattlebuddhisttemple> and see Play Lists.



## Podcast by

Rev. Takashi Miyaji <https://rdtakam.podbean.com/> or



<https://podcasts.apple.com/us/podcast/no-doubt-a-shin-buddhist-approach/id1511351502>

## Podcast on Oakland Buddha statue



<https://ohthepodcastsyoullgo.wordpress.com/2017/11/16/oakland-buddha-statue/>

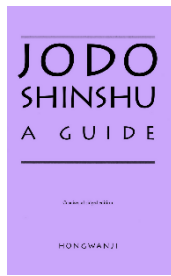
## For old fashioned print

- **PACIFIC WORLD** Journal of the Institute of Buddhist Studies: <https://pwj.shin-ibs.edu/> Issues of the Pacific World Journal from 1980's to current. All the articles can be downloaded in pdf. Recent issues are more specialized but some in the 1980s were directed to general audience but still of interest.

- **MURYOKO** 'Infinite Light'



*Journal of Shin Buddhism* (main articles): <http://nembutsu.info/contents.htm> This is from the Australian Jodo Shin group.

-  *Jodo Shinshu: A Guide* is available as a [PDF on the BCA website](#). BCA stands for Buddhist Churches of America. This abridged edition provides an overview of Buddhism, Shinran Shonin, and the Jodo Shinshu teaching. <https://www.buddhistchurchesofamerica.org/jodo-shinshu-a-guide/>



Free video lectures offered by the Center for Buddhist Education  
For upcoming programs:

<https://www.buddhistchurchesofamerica.org/center-for-buddhist-education/> For previous programs and play lists: <https://www.youtube.com/c/BCACenterforBuddhistEducation/videos>



**EVERYDAY BUDDHIST**

offers courses appealing

to newcomers and experienced students. When you subscribe for \$95 per year (or \$10 per month) you get unlimited access to 12 NEW Courses and support our mission to share contemporary Shin Buddhist practices for everyday life. <https://www.everydaybuddhist.org>



## Young Buddhist Editorial

*is dedicated to providing a platform for the expression of young Buddhists and a safe space where such young Buddhists can foster growth, community and interconnectedness while creating a dialogue between young Buddhists and other generations of Buddhists.* Articles, artwork, and workshops:

<https://www.youngbuddhisteditorial.com/>

###



# Seattle Betsuin Gratefully Acknowledges the Following Donations October - November 2020

## Funeral / Memorial / Nokotsudo:

Joe Ike – Memorial Service	\$ 1,000.00	Miyoko Ike
Albert Shintaku – In Memory of	\$ 500.00	Frances Shintaku
Kenneth Enomoto – In Memory of	\$ 100.00	Erika Enomoto
Hiroko Hasegawa – In Memory of	\$ 100.00	Kathy Hasegawa
Bruce Nakanishi – In Memory of	\$ 100.00	Irene Goto

## Given by:

## In Memory of:

Fumi Alice Bunya  
 Jack Habu  
 Hiroko Hasegawa  
 Bill Komoto  
 Yoshie Mamiya  
  
 Michael Higa  
 Ayako Teramoto  
 Cherie Tsubota  
 Yoshiko Tsujihara  
 Mary Yoshijima

## Given by:

Anonymous  
 Richard & Gayle Choi; Patricia Mastrude  
 Jeffrey & Susan Hasegawa (for SBBWA Memorial)  
 Tomio & Yan Li (Jenny) Moriguchi  
 Charles Furkawa; Ellen Hale; Stephen Hasegawa; Hiroko Janet Kosai; Wayne Kuramoto; Meri Shimada; Mutual Fish Company Inc.; Tomio & Yan Li (Jenny) Moriguchi  
 Reiko Hara  
 Margaret Teramoto  
 Jeffrey Ko & Tina Zumoto-Ko (for SBBWA Memorial)  
 Jeffrey Ko & Tina Zumoto-Ko (for SBBWA Memorial)  
 Gail Suzaka

## Endowment:

Frances Shintaku In Memory of Albert Shintaku

## Drive-by Eitaikyo O-mairi Incense Offering:

Anonymous; James & Tomiko Zumoto

## Project Mokuren Donations (con't):

Donald & Karen Akira; Patricia Bobrow; Kenny & Yoshie Dodobara; Irene Goto; Gordon Habu & Mae Yamasaki-; Roy & Deanna Ikegami; Gail Kaminishi; Jeffrey Ko & Tina Zumoto-; Kenneth Kubota; Lisa Kumasaka; Andrea Mano; Hugh & Ivy Chen-Matsubayashi; Curtis & Charlene Nakayama; Ernest & Sanaye (Sunnie) Nagai; Patricia Oye; Angela (Seon) Sanchez; Gary & Deborah Shibata; Ben & Etsu Shimbo; Lika Siegel; Mariko Soejima; Gail Suzaka; Susan Taketa; Peggy Tanemura; Susanne Umeda; Kenneth Yocom & Anna Tamura; Akiko Yabuki; Jeffrey & Susan Yamane; Yoko Yanari

## Fall Ohigan Donation: Lisa Kumasaka

## Virtual Obon: Calvin Terada (balance of pledge)

CONTINUED ON NEXT PAGE....

**...October - November Donations continued**

**General Donations:**

<u>Donor:</u>	<u>For:</u>
Robert Matsumoto	Appreciation for welcoming his son, Devon Matsumoto, to the Betsuin Sangha
Susie Taketa	General Donation
Steve Harada	General Donaton
Robert Hamatani; Cyrus & May Chin Honmyo; Kelly Kuwahara; Brian Kaku Boeing Employee Community Giving Program	
Shokichi Tokita	General Donation
Tomio & Yan Li (Jenny) Moriguchi	General Donation
Michael Kramer	General Donation
Michael & Gayle Teramoto	General Donation
Fuyo Yoshida	General Donation
Risa Suzuki	Japanese Play Group
Mark & Erin Taylor	Appreciation for Butsudan
Japan Creative Arts, LLC	Appreciation for Gagaku Instruments
Kroger, Inc.	20 Families rebate participation
Machiko Wada	Sr. YBA for stickers
Jeffrey Ko & Tina Zumoto-	Sr. YBA for stickers
Tome Mattila Estate	Distribution from Estate of Tome Mattila (\$ 254.71)

**2021 FAMILY MEMORIAL SERVICE SCHEDULE**

In the Jodo Shinshu tradition, family memorial services are held on designated anniversaries to express gratitude and recall cherished memories of our loved ones while listening to the Buddha Dharma. While the Temple is closed due to the Covid-19 pandemic, Rinban Kusunoki will read your loved one's name during the Joint Memorial Service livestreamed on most Saturdays at 10 am or will conduct a virtual service for your family and friends. If you have a family member who passed away in the following years, you are encouraged to hold a memorial service in 2021:

<u>Year of Death</u>	<u>Service</u>
2020	1st year memorial
2019	3rd year memorial
2015	7th year memorial
2009	13th year memorial
2005	17th year memorial
1997	25th year memorial
1989	33rd year memorial
1972	50th year memorial

**Please call the Temple office at (206) 329-0800 to schedule a service.**  
- JN



# Maitreya Charity received a grant from Buddhist Churches of America in 2004 when the founders set up the charity in Seattle.

We at Maitreya are deeply grateful and very excited about the large 2020 grant we won from Buddhist Churches of America Social Welfare Committee. The money will help the poorest families, the hot meal and tutoring program for children, pay school fees to enable poor children to attend school on par with others. Emergency medical care, dental care assistance will be covered by the grant as well as Dharma teachings at the women's prison, gifts for the orphans and youth prisoners. Maitreya also helps with housing and heating crises.

We continue to support potable water filtering, farming education, women's employment, English teaching, printing and distribution of Buddhist texts.

Many of you have participated in supporting the programs in Mongolia over the years by attending our ABA Hawaiian breakfast fundraisers and more recently by donating vitamins, money and medical equipment that I carried to Mongolia in 2018.

Thank you for participating in the 2019 Buddhist Global Relief Walk to Feed the Hungry or this year's virtual fundraisers. BGR has also been very generous to Maitreya Charity as well.

Gassho

Gail Kaminishi

Photos by Gail Kaminishi



Made in Mongolia workers make felted items to sell. The workshop employs single parent householders.



A hot meals program participant

**DECEMBER 2020 BETSUJIN SCHEDULE**

Sunday	Monday	Tuesday	Wednesday	Thursday	Friday	Saturday
<p><i>To view all services, please visit <a href="http://www.youtube.com/seattlebuddhisttemple">http://www.youtube.com/seattlebuddhisttemple</a></i></p> <p><b>JANUARY 2021 SPECIAL EVENTS (All services will be virtual)</b></p> <p>January 1 New Year's Day Service <i>livestreamed</i></p> <p>January 11-15 Goshoki Hoonko Services</p> <p>January 17 Betsuin Hoonko Service</p> <p>January 24 NW Ministers Association Hoonko Service</p>	<p><b>1</b> <i>Rinban's day off</i></p>	<p><b>2</b> 10 am livestream Morning Service 11 am Sutra Chanting &amp; Dialogue - Zoom</p>	<p><b>3</b> 10 am livestream Morning Service 10 am Japanese Play Group on Zoom</p>	<p><b>4</b> <i>Rinban's day off</i> 11 am Gojikai Svc &amp; meeting on Zoom</p>	<p><b>5</b> 10 am livestream Joint Memorial Service</p>	
<p><b>6</b> 9 am Meditation on Zoom 10 am <b>SUNDAY SERVICE</b> streamed on YouTube Adult Service: Rinban Japanese Service: Rinban Sangha Exchange on Zoom 11am 12pm SBBWA Board meeting on Zoom</p>	<p><b>7</b> 10 am livestream Morning Service 11 am Seattle Japanese Dharma Gathering - Zoom</p>	<p><b>8</b> <i>Rinban's day off</i></p>	<p><b>9</b> 10 am livestream Morning Service 11 am Sutra Chanting &amp; Dialogue - Zoom</p>	<p><b>10</b> 10 am livestream Morning Service</p>	<p><b>11</b> <i>Rinban's day off</i> 10 am Japanese Play Group on Zoom</p>	<p><b>12</b> 9:30 am Book Study Group 10 am livestream Joint Memorial Service</p>
<p><b>13</b> 9 am Meditation on Zoom 10 am <b>BODHI DAY SERVICE</b> combined with NW Ministers Association streamed English: Rev Jim Warrick, White River Japanese: Rev Nariaki Hayashi, Ekoji 11 am DS Dharma Exchange on Zoom</p>	<p><b>14</b> 10 am livestream Morning Service 11 am Seattle Japanese Dharma Gathering - Zoom</p>	<p><b>15</b> <i>Rinban's day off</i></p>	<p><b>16</b> 10 am livestream Morning Service 11 am Sutra Chanting &amp; Dialogue - Zoom</p>	<p><b>17</b> 10 am livestream Morning Service 10 am Japanese Play Group on Zoom</p>	<p><b>18</b> <i>Rinban's day off</i></p>	<p><b>19</b> 10 am livestream Joint Memorial Service 2 pm Gagaku practice</p>
<p><b>20</b> 9 am Meditation on Zoom 9 am Religious Dept meeting 10 am <b>SUNDAY SERVICE</b> streamed on YouTube Adult Service: Rev Irene Goto Japanese Service: Rinban 11 am Sangha Exchange on Zoom</p>	<p><b>21</b> 10 am livestream Morning Service 11 am Seattle Japanese Dharma Gathering - Zoom 8 pm Newsletter deadline</p>	<p><b>22</b> <i>Rinban's day off</i></p>	<p><b>23</b> <i>Rinban's vacation</i></p>	<p><b>24</b> <i>Rinban's vacation</i></p>	<p><b>25</b> <i>Christmas holiday</i></p>	<p><b>26</b> <i>Rinban's vacation</i></p>
<p><b>27</b> 9 am <i>Rinban's vacation</i> 10 am Meditation on Zoom 11 am <b>SUNDAY SVC stream (No Dharma School)</b> Adult Service: MA Leonora Clarke Japanese Service: Rinban 11 am DS Dharma Exchange on Zoom</p>	<p><b>28</b> <i>Rinban's vacation</i></p>	<p><b>29</b> <i>Rinban's day off</i></p>	<p><b>30</b> <i>Rinban's vacation</i></p>	<p><b>31</b> 7 pm Virtual New Year's Eve Service</p>		



**Seattle Buddhist Church**  
1427 S Main Street  
Seattle, WA 98144

**2020 December**  
*Wheel of the Sangha*  
**A Monthly Newsletter of  
Seattle Buddhist Church**

**YBE'S BOOK CLUB FOR  
OPTIMISTIC PEOPLE:**  
[https://  
www.youngbuddhisteditorial.com/  
bookclub](https://www.youngbuddhisteditorial.com/bookclub)

Thank you, everyone! We did it! With your generous donations SBBWA and Dharma School collected 1214 pairs of socks surpassing our goal of 500 to donate to Operation Nightwatch's Sock It To Homelessness.



## Contact Us

**Seattle Betsuin  
Buddhist Temple**  
1427 S Main Street  
Seattle, WA 98144

Phone: 206. 329.0800  
Fax: (206) 329-3703  
office @SeattleBetsuin.com  
**SeattleBetsuin.com**

**Office Hours**  
Call for recorded  
updates and for  
emergencies

**Minister 24 hours**  
206.779.2214  
**Rimban:**  
Rev Katsuya Kusunoki

## BCA Connect (Buddhist Churches of America)

Sign up! The BCA newsletter is where you can find all the temples' live-streams, workshops, and messages from temples across the country.

<https://www.buddhistchurchesofamerica.org/connect/>

*Wheel of the Sangha* Editors  
Irene Goto, English: newsletter@seattlebetsuin.com  
Machiko Wada, Japanese: newsletter-jpn@seattlebetsuin.com  
Deadline is the third Monday each month at 8PM