



Wheel of the Sangha

October 2020

Seattle Betsuin Buddhist Temple, A Shin Buddhist Temple,
Jodo Shinshu Nishi Hongwanji-ha

a monthly newsletter of Seattle Buddhist Church
Volume 39 Issue 10
online only

Smoke in Our Mind

by Rimban Katsuya Kusunoki

Wildfires broke out all over the West Coast in August and September and the massive harmful smoke flowed into Seattle. We needed to stay inside the house, and checking the air quality became one of my daily routines. During that time, my family and I went to Bellevue for grocery shopping and refreshing our minds. We went onto the I-90 highway and entered a tunnel. When we exited it, we could not see anything because of the smoke. We usually see houses and trees on Mercer Island and the beautiful lake from the bridge. We can also see Mt. Rainer on a fine day. But it was all white that day. When we were driving there, my wife sighed, "It is as if we are crossing the *Sanzu river and going to the other world". Indeed, it is scary to drive in poor visibility.

About two years ago, I went to the Yakima Buddhist temple to conduct a service. I was planning to drive there, but the weather forecast said it was going to snow and the mountain pass was going to be closed. So, I decided to take an airplane to go there. When the airplane was across the mountain, there was a dense fog. I could not see anything outside. The pilot tried to land at the Yakima Airport a couple of times, but he could not. He broadcast in-flight, "This will be the last attempt. This airplane returns to Seattle unless I can see the runway." I was very scared, and wished to return to Seattle without attempting one more time. Fortunately, the fog thinned, and the airplane landed without any trouble. I truly feel scared and in danger when I am in a bad visible condition.

These two experiences are examples of scenarios where it was difficult to see what was outside of myself. Next, I would like to consider my view of seeing inside myself. I believe I have a good view to see myself and don't have much problem to see my life. But it is not always true. My view often becomes clouded. Fog and smoke become obstacles for me to see scenery. What are obstacles in seeing myself and my life clearly? When I examine myself, I compare myself with others. When I see another Buddhist minister who has studied a lot and

continued on p. 2...



Rimban explaining Betsuin's Camp Fire Group in Japanese in celebration of their 70th Anniversary

Interested in Joining the Seattle Betsuin's Virtual Programs?

We have ongoing book study, weekly meditation sessions and Dharma exchange following our weekly Sunday services. More information on how to join available below.

Weekly Zoom Meditation 9:00am on Sunday. Contact Leonora Clarke (clarkel@uw.edu for a Zoom link).

Seattle Betsuin Book Study will meet on Saturday, November 14, at 9:30AM.

To be notified of Zoom links to Buddhist Book Study, Sangha Exchange, and Dharma School, go to newsletter@seattlebetsuin.com, and specify the group in the subject line.

Online Jodo Shinshu Service:

<https://youtube.com/seattlebuddhisttemple/>

...Rimban's Message continued from p. 1

has great knowledge, I am jealous of the minister and I disparage my lack of knowledge. On the other hand, when I feel I am a better Buddhist minister than another one, I look down on the other one and think highly of myself. I also become haughty and blame others when I feel I am right, and they are wrong. When envy, vanity, and arrogance (ego centered mind) arise in my mind, my view becomes narrow and cloudy. It is just like my mind is covered by a dense fog and massive smoke. It is a scary and dangerous condition. But unfortunately, I do not even realize I am in such a scary and dangerous condition most of the time. It causes more troubles and sufferings. Therefore, it is important to have another pure view to see myself. The other view is the Buddha's view. I listen to the Buddha Dharma and try to see my life and others' lives through Buddha's view. It is an important practice for me.

I would like to introduce a hymn (wasan) which our founder Shinran Shonin wrote.

"All the good acts and myriad practices
Because they are performed with a sincere
mind and aspiration,
Become, without exception, provisional good
That will lead to birth in the Pure Land."

(Hymns of the Pure Land 63, CWS P. 342)

Shinran Shonin wrote this hymn to praise the nineteenth vow in the Forty-Eight Vows of Bodhisattva Dharmakara who later became Amida Buddha. All the good acts and myriad practices are the practices for the Path of Sages and these are not for the Pure Land Way and the Nembutsu Path. The practices for the Path of Sages are all relying on each person's self-power. Amida Buddha made the nineteenth vow to eventually guide these people who now rely on their self-power to the Nembutsu path. In Buddhism, there are two different types of practices. One is the practice relying on my self-power and the other is the practice relying on Other Power of Amida Buddha's Primal Vow. In Jodo Shinshu, we abandon the self-power practice and rely on Other Power of Amida Buddha's Primal Vow. Then, we are born in Amida Buddha's Pure Land and attain enlightenment. We need to think, "Why do we, Jodo Shinshu followers, abandon the practices rely-

ing on our self-power and the self-centered practices?" If I try to accomplish the Buddhist practice using my self-power, it is my human nature to compare myself with other people who are also practicing. When I see someone who practices more than I do, I disparage my lack of practice and envy arises in my mind. When I think I practice more than others, I look down on others and think highly of myself. Also, I may start blaming others that my practice is right, and their practices are wrong. Again, envy, vanity, and arrogance (ego centered mind) arise in my mind. It is how I am falling into a dangerous condition rather than attaining enlightenment which is pure and peaceful. My view and mind become cloudier although the Buddhist practices are for awakening. It seems that this path does not suit me to achieve the Buddhist goal which is to become Buddha.

Jodo Shinshu is the path of Nembutsu in which I rely on Amida Buddha's wisdom and compassion. We listen to Amida Buddha's guidance, entrust ourselves to Amida Buddha's Vows, and recite Namamidabutsu (Nembutsu) daily to express our gratitude. Although I still carry my envy, vanity, and arrogance, I am able to walk this path because it is prepared and guided by Amida Buddha. I may first think that I do all Buddhist practices and deeds by using my self-power and self-effort. While listening to Amida Buddha's teaching, I realize this is also the path which Amida Buddha has prepared for me and to guide me to the Nembutsu path. Amida Buddha has already known that I may go to another path which is relying on self-power. Therefore, he made the nineteenth vow to bring me back to the right path. Wherever I go, whatever I do, I am in Amida Buddha's Compassion. I just bow my head to express my deepest appreciation.

There have been many things happening since the beginning of 2020. There are only three months left before the end of 2020. Whatever happens, we try our best to have our clear view to see ourselves and walk the path of Nembutsu with gratitude.
Gassho,

**Sanzu* river: the river which a dead man must cross during the first week after death. (A Dictionary of Japanese Buddhist Terms, Hisao Inagaki)

Betsuin Tea Talk with Leanne Nishi-Wong

“The Other Shore”

Ohigan is observed during the Spring and Fall Equinoxes. This “other shore” observance ushers in the shortening of daylight hours, the crisp air, and the changes in the vibrant gardens of Summer. A respite from active days outside; transitioning into the quiet hibernation of the indoors; and preparing for the upcoming new year.

The Seattle Betsuin has begun the new season of activities... Dharma School, Dharma Exchanges, Boy Scouts/Cub Scouts, Camp Fire, Meditation, YBA, Sutra Chanting/Dialogue and the Japanese Play Group. Please see the Temple website at SeattleBetsuin.com for additional information on programs and the Service schedules.

If you have comments on current programs or suggestions for additional Dharma offerings, please write to me at seattlebetsuinchairperson@gmail.com.

May your paths of dana (generosity), morality, patience, energy, meditation, and wisdom be kind to you in this season of change.

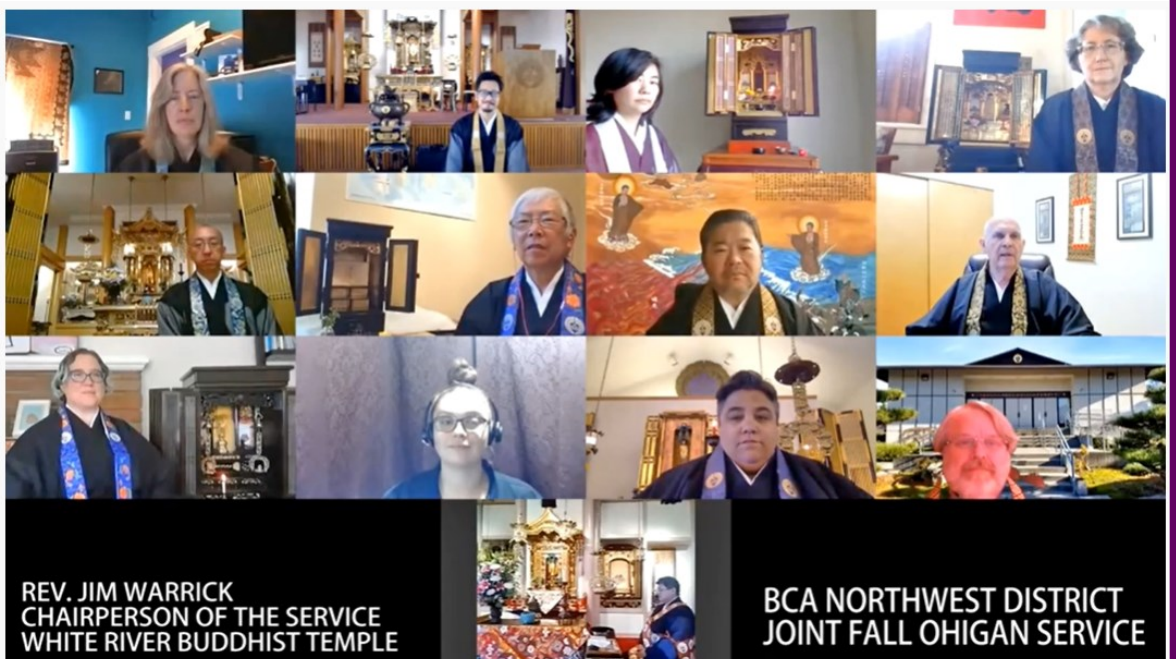
Gassho,
Leanne

NW District Ministers Online Fall Ohigan Service September 20,

2020. Appearing in Zoom gallery view are **top row:** MA Lynrae Hubble (Tacoma); Rev. Yuki Sugahara, Resident Minister (Oregon); Rev. Cindi Yasaki (Tacoma); Rev Anne Spencer (Idaho-Oregon); **second row:** Rimban Katsuya Kusunoki, Resident Minister (Seattle); Rev. Kathy Chatterton and Rev. Jerry Hirano, Supervising Minister (Idaho-Oregon); Rev. Jim Warrick, Resident Minister (White River); **third row:** Rev.

Rosalie May, (Seattle); MA Amanda Goodwin and Rev Melissa Opel, (Spokane); MA Ken Garner, (Oregon); **fourth row:** Rev. Tadao Koyama, Resident Minister (Tacoma). View online at:

https://www.youtube.com/watch?v=Yx_CONM-PC0&feature=youtu.be



ON BEHALF OF THE MEMBERSHIP COMMITTEE...

We would like to “thank” the following for contributing their 2020 sustaining membership dues - the basic dues towards Temple maintenance/operations and programs. The minimum for individual membership is \$400 (for under 70 years of age), and \$350 (for 70 years of age and over).

Kenny & Yoshie Dodobara, Ron Hamakawa, Robert Hamatani, Kathy Hasegawa, Cyrus & May Chin-Honmyo, Malcolm & Eileen Kanemoto, Gary Kato, Sylvia Kawabata, Noboru & Hatsuye Kawada, Ritsuko Kawahara, Marc & Jan Keltner, Jeff & Tina Zumoto-Ko, Taka Kogita, Esther Kojima, Duane & Ann Mayeda, Paul & Teresa Mori, Fumiko Nakamura, Ruby Nakamura, Curtis & Charlene Nakayama, Mari Ohara, Stephanie Ojima, Emiko Okada, Tokuzo & Mari Okumura, Marianne Osaki, Dave Scattergood & Joyce Tsuji, Debra Tachibana, Ilene Tanabe, Kayoko Terada, Josie Watanabe, Victor Yagi

We'd like to 'WELCOME' **Sylvia Kawabata** as a new member and to 'Welcome Back' Debra Tachibana to our Sangha.

(Compiled by Howard, Joan, Pauline & Steph)

We are now recruiting for next year's Board of Directors.

The election will be held in late November. The term is for three years.

Anyone interested in volunteering must be a dues-paying temple member and have an interest in helping guide the temple into the future. Challenges ahead include ensuring we continue to be a welcoming temple for a diverse Sangha, while maintaining the health of an aging facility filled with history and memories.

People of all ages and talents are encouraged to apply.

Anyone interested, please send a note to seattlebetsuinchairperson@gmail.com.

Gassho, Grace Tazuma and Ann Oxrieder

ZOOM KEEPS OUR LINKS BRIGHT AND STRONG

Meditation participants received their temple Sangha Friends addresses to mail cards to members who have limited means of connecting to temple. . Sangha Exchanges were held Sept. 6, 20, 2020. October



Sangha Exchanges will be on October 4, 18, 2020 at 11:00AM. Please find the Zoom links in the Weekly E-News the Monday prior, or email newsletter@seattlebetsuin.com and designate the requested group as the subject. You will be emailed the link. -IHG



Meditation Resumes Virtually after a Special Outdoor, Before Fall, Meditation Event in Wisteria Park on Sunday, September 6, 2020. A dozen gathered at a distance, in-person for a refreshing morning sit.

All are welcome to attend via Zoom each Sunday at 9:00AM for Sitting in Gratitude Meditation. To get on the email list, leave your information at newsletter@seattlebetsuin.com or look for a notice in the Betsuin's Weekly E-news. - IHG

First Day of Dharma School Meet-and-Greet was a huge success!

Welcome to the 2020-2021 school year, our first ever online Dharma School! Some things will be the same; some very different. Our dedicated volunteer teachers are exploring online modalities with the spirit of experimentation, impermanence, and open heartedness. Please expect this year to be one in which your participation and feedback are essential to this extraordinary new world.

If you are not subscribed to the Dharma School newsletter, please contact dhammaschoolsupporters@gmail.com or info@seattlebetsuin.com

Thank you for bringing your child(ren) to the Seattle Betsuin Dharma School for the 2020-2021 school year. We invite and value your participation! Please feel free to contact your children's teachers, the Dharma School Board or the Superintendents with any questions!

Virtual Hatsumairi Ceremony Service Hatsumairi or "First Visit" is a Jodo Shinshu tradition that acknowledges the child's first visit to the temple. Parents present their children before the image of Amida Buddha and members of the Sangha as an expression of their gratitude and desire to expose them to the teachings of the Buddha.

If you are interested in presenting your child(ren) at this service, please contact the temple office at office@seattlebetsuin.com or 206-329-0800. Deadline

to register is October 9, 2020. Ceremony will be Sunday, October 18, 2020, 9:30 am

Classroom Reports

Pre-K & Kindergarten The Pre-K/K teachers welcomed new and returning students to the 2020-21 Dharma School term and look forward to sharing the Dharma thru weekly virtual lessons and activities. Each student was sent a box of supplies to help complete the lessons and a chart to track attendance. The class is encouraged to participate in the weekly 10 am Sunday services on the Betsuin YouTube channel.

Signs of fall and the significance of Fall Ohigan were explained in a slideshow presented to the class. Students were asked to color a picture of a tree and decorate the branches with leaves from their yard or fall colored objects found around the house as a reminder of Fall Ohigan – a time to thank Amida Buddha for the love and compassion that surrounds us every day.

3/4/5 grade:We were very excited to meet our '20-'21 DS community during our 1st ever virtual, 1st Day of Dharma School Meet and Greet on September 13 and then our 3/4/5 class on September 20. During our class we got to know each other by playing a game while using and becoming even more familiar with our virtual ZOOM tools. We plan on continuing to meet via ZOOM on the 1st and 3rd Sundays of each month and are grateful to continue to learn together, while also developing friendships among our young sangha friends.

Submitted by Joyce Tsuji

Rev. Katsu's Updated Daily Service Live Streaming Schedule

<https://youtube.com/seattlebuddhisttemple>

Monday, 10:00 AM Morning Service

Tuesday, No Service

Wednesday, 10:00AM AM Morning Service

Thursday, 10: 00 AM Morning Service & 11:00 AM Sutra Chanting and Dialogue

Friday, No Service

Saturday, 10:00 AM Joint Memorial Service, 11:00 AM Sangha Award Class

Sunday, 10:00 AM Pre recorded Virtual Sunday Service

Seattle Betsuin Gratefully Acknowledges Donations August - September 2020

Funeral / Memorial / Nokotsudo:

Given by:

Yoshie Nakagawa – In Memory of	\$ 500.00	Richard Yamamoto
Kazuo Yamasaki – Memorial Service	\$ 300.00	Fujie Yamasaki
Nokotsudo for Dick Hara	\$ 300.00	Reiko Hara
James I. Doi – In Memory Of	\$ 250.00	Alice Doi, cousin
Mary Doi – In Memory Of	\$ 250.00	Alice Doi, cousin
Nokotsudo for Joichi Nakamura	\$ 250.00	Katherine Nix

In Memory of:

Given by:

Jack Habu	Ritsuko Kawahara
Teruyo (Terrie) Tanino	Susan Taketa; Fay Tanagi
Yoshie Nakagawa	Theodore & Akico Taniguchi

Endowment:

HM Kaneko Music Fund: Brian & Arlene Cole

General Donations:

Donor:

For:

Jeff & Tina Zumoto-Ko	Appreciation for Scholarship for daughter, Emily Ko
Rev. Katsuya & Ayano Kusunoki	Celebration Katsuya's birthday
Cyrus & May Chin-Honmyo	Boeing Employee Fund – Yourcause
Brian Kaku	Boeing Employee Fund – Yourcause
Kelly Kuwahara	Boeing Employee Fund – Yourcause
Robert Hamatani	Boeing Employee Fund – Yourcause
Satoru & Grace Ichikawa	General Donation
Risa Suzuki	Appreciation for Japanese Play group
Tokuzo & Mari Okumura	General Donation
Diane Inaba	Appreciation for Dharma Name
Sylvia Kawabata	General Donation
Ron Hamakawa	General Donation
Wayne Suyenaga	Appreciation for book, Three Pureland Sutras
Greg & Anne Oxrieder	Appreciation for book, Three Pureland Sutras
Dale & Shizue Kaku	Virtual Obon Sponsor
Charles Natsuhara	Virtual Obon Sponsor
Fuyo Yoshida	Atomic Bomb Memorial Service
Theodore & Akico Taniguchi	Hatsubon/Obon Service

###

Musical Notes

submitted by Kemi Nakabayashi

To welcome back Dharma School students, teachers, and parents, the video recording of *Time for Dharma School* was completed remotely from home by the magic of technology. This special collaboration featured Ellie from Sacramento Betsuin as vocalist, Annette Inouye from Vista Buddhist Temple on flute, and Kemi Nakabayashi on piano. With review by composer Donna Sasaki from Tacoma Buddhist Temple and permission also from Ellie's father Koichi Mizushima, who also serves as Youth Coordinator for the Committee for Buddhist Education, this small project represents a preview of the work of a new BCA Ad Hoc Music Committee that Rev. Marvin Harada and Kent Matsuda as president of BCA wish to create. In July, the Northwest District was approached and asked if we would take the lead in organizing this new Music Committee. Kemi has agreed to serve as chairperson. Rev. Kusunoki and Rev. Yuki Sugahara from Oregon Buddhist Temple are the ministerial advisors. Rev. Harry Bridge, whom we remember from his epic keynote message for our Northwest District Convention in 2015 and is the current chairperson of the Ministerial Association, is also an Ex-Officio member of this new Music Committee along with Rev. Harada and Dr. Matsuda. In addition to the strong representation from the Northwest District, including representatives of Dharma School and BWA, the BCA Ad Hoc Music Committee participants represent all the BCA districts. More details will be shared next month.

In time for autumn Higan, the audio recording of the



Rev. Seigen H. Yamaoka
November 14, 2019
at the IBS Memorial
Service in Berkeley



September 9, 2020 view in San Francisco,
photo from Sandy Cressman.

gatha *Higan* with lyrics by Rev. Seigen Yamaoka and composed by Hiro Imamura, was completed last month. Rev. Yamaoka shared that Hiro's mother Jane Imamura had asked him to write something before he left for Japan. He wrote the lyrics for *Higan* in 1958 when he was living as a student in Berkeley Sangha dormitory and recalls Hiro being a teenager at the time she wrote this music, as Hiro also corroborates. Rev. Yamaoka replied after listening to the gatha recording, "... in a very difficult moment for all life, yet the sun always tries to break through.....It is a wonder that *Higan* has lived so long." However, even more remarkable was the mention by sound engineer Jeff and vocalist Sandy Cressman that they recorded the vocal part (including the lyrics "...The autumn sky its golden haze, ..." on the day where many in the Bay Area shared descriptions and images of the orange sky from the nearby fires. "So moving a combination of song and life," wrote Sandy with the accompanying photograph from the home studio where they recorded *Higan*.
###

“Sangha Exchange” meetings are held on the first and third Sundays at 11:00AM via

Zoom video conference, hosted by Joe Gotchy and Irene Goto. Everyone is invited to gather informally and virtually to keep in touch, to meet newcomers through the Dharma. Look for the Zoom link in the temple's **Weekly E-News on Mondays** prior to October 4 and 18 or email newsletter@seattlebetsuin.com. Joe and I look forward to seeing you! Gassho - Irene Goto

Buddhist Book Study on

Saturday, Sept. 19, the book discussion group of Seattle Betsuin met (on Zoom) to discuss Rev. Takashi Miyaji's podcasts on Doubt. His points were made clearly and precisely without being too formal or stuffy. His talks were relatable and fed our discussion, including his view of capital punishment. The next meeting will be on Saturday, November 14, 2020, on another podcast.

To receive notices, e-mail: newsletter@seattlebetsuin.com, designate the Subject: *Buddhist Book Study*.

– Dennis Yamashita and Irene Goto

Seattle Betsuin Buddhist Women's Association

(SBBWA)'s Mission Statement is to cultivate religious awareness as Jodo Shinshu Buddhist women and promote fellowship among its members; to serve and support the Seattle Betsuin, and contribute services to the welfare of the community.

To cultivate religious awareness, this month the SBBWA has been working to support the Women in Buddhism (WiB) Webinar, on October 3-4th, helping Rev. Irene Goto with planning, and participating as presenters and facilitators. In the past, many SBBWA volunteers have provided snacks, set up refreshment room, donated coffee, and helped with registering and directing attendees.

Also, in conjunction with the WiB program, the SBBWA conducts the Eshinni-ko and Kakushinni-ko Memorial Service, which will be at 10:00 AM on Sunday, October 4, 2020. We cordially invite all to this important service to honor Shinran Shonin's wife and daughter. It will be streamed on the Betsuin YouTube channel. The English Dharma Talk will be given by guest speaker, Rev. Patti Usuki, BCA Minister Emeritus. (right)



Rev. Etsuko Mikame of the San Jose Buddhist Temple will be the guest speaker at the Japanese Program to follow. (left)

Other Announcements:

The next Board of Director's meeting will be on October 11th at noon instead of Oct. 4th due to the Women in Buddhism Webinar being on Saturday and Sunday afternoons.

Our SBBWA members who have passed away since March will be sadly missed: Michiye Ohtani, Sachiko Ozeki, and Yoshiko Mamiya

2020 Donations received by SBBWA through September 19

General Donations Received

Lauren Asaba (In appreciation of Irokai Svc), Lauren Asaba (In memory of Terrie Tanino), Janice, Carol, & Paul Deguchi (Appreciation of SBBWA support after Mae's passing), Fujii Family (In memory of Doei Fujii), Sue Fujino (In appreciation of Visit/Kleenex gift), Ellen Hale (Appreciation for Visit (Karen A., S. Yamasaki and Daughter Sally)), Hiroo Family (In memory of Terrie Tanino), BWA Idaho-Oregon ("Ochadai" for 2020 NWD Convention), Loraine Jacobs, Kanako Kashima (In memory of Mae Deguchi), Lori Kozai, Kinue Kuwahara (Lady Takeko Kujo and Lady Yoshiko Otani Memorial Service), Joy Nakata (In memory of Sunkie Oye), Charlene Nakayama (Thank you for SBBWA outreach), Yasuko M Natsuhara, Leanne Nishi-Wong, Nancy Okawa (Thank you for SBBWA outreach), Tish Oye, Etsu Shimbo (Dana for Irokai Obento), Michael & Priscilla Shiogi (In memory of Terrie Tanino), Nori Suguro, Peggy Tanemura (In gratitude for visit to Merrill Gardens on 12/26/19), Suzuko Terada, Machiko Wada, Shizue Yahata, Susie Yamane (Lady Kujo Memorial Service)

Dana Day Donations Received

Yuki Arinobu, Lauren Asaba, Janet Baba, Clara Beard, Patricia Bobrow, Yoshie Dodobara, Aiko Fujii, Sue Fujino, Sue Fujino, Florence Fujita, Margaret Gotchy, Lori Hamamoto, Eileen Hamamoto, Yoko Hamanaka, Peggy Hanada, Miyuki Hanada, Reiko Hara, Setsuko Harada, Kathy Hasegawa, Jamie Huh, Deanna Ikegami, Yaeko Ito, Shizue Kaku, Miyoko Kaneta, Kanako Kashima, Mary Katayama, Ritsuko Kawahara, Masako Kawamoto, Frances Harada Kobayashi, Taka Kogita, Yoshie Kosai, Yoshiko Kozai, Lisa Kumasaka, Carolyn Kunihiro, Kinue Kuwahara, Irene Mano, Sheri Mizumori, Karen Morikubo, Sunnie Nagai, Kemi Nakabayashi, Judith Nakamura, Kiyoko Nakanishi, Joan Nakano, Junko Nakano, Nobuko Nakayama, Charlene Nakayama, Yasuko M Natsuhara, Leanne Nishi-Wong, Mabel Nishizaki, Marlene Okada, Janie Okawa, Nobuko Otsuji, Connie Ozeki-Chinn, Irene Saito, Angela Sanchez, Teruko Shigaya, Etsu Shimbo, Darlene Shimizu, Kazumi Shimizu, Aiko Suganuma, Gail Suzaka, Anna Tahara, Kuniko Takamura, Kiyo Takashima, Naomi Takemura, Sonoe Taketa, Ileene Tanabe., Fumie Taniguchi, Akico Taniguchi, Miyoko Tazuma, Kayoko Terada, Suzuko Terada, Nina Tomita-Kato, Michiko Toyoshima, Machiko Wada, Keiko Watanabe, Marissa Wong, Susie Yamane, Mae Yamasaki, Yoko Yanari, Fukuyo Yee, Sumie Yokota, Fusae Yokoyama, Fuyo Yoshida, Fuyo Yoshida, Tomiko Zumoto

Submitted by Janie Okawa

OCTOBER 3, 4 <https://SeattleBetsuin.com/2020wib/> to register



WOMEN IN BUDDHISM

Tools for Spiritual Wellness



A Webinar Gathering • October 3 & 4, 2020

Registration: Free • Details: seattlebetsuin.com/2020wib

“Sangha Friends Outreach Card Project: Over 30 volunteers are sending a card to each of our Seattle Betsuin sangha members households. We hope you’ll enjoy hearing from them and the *Join Us For A Service* online information. This new committee’s mission is to assist in maintaining the connections of our sangha and community.” www.youtube.com/seattlebuddhisttemple

Submitted by Tina Ko

VIRTUAL HATSUMAIRI CEREMONY SERVICE

Sunday, October 18, 2020

9:30 am

Hatsumairi or “First Visit” is a Jodo Shinshu tradition that acknowledges the child’s first visit to the temple. Parents present their children before the image of Amida Buddha and members of the Sangha as an expression of their gratitude and desire to expose them to the teachings of the Buddha.

The Hatsumairi ceremony will be held on Zoom at 9:30 am on Sunday, October 18, 2020. Children of all ages are welcome to participate. If you would like to present your child(ren) at this service, please complete the registration form below and e-mail to office@seattlebetsuin.com or mail to the Seattle Betsuin Buddhist Temple at 1427 S Main St, Seattle, WA 98144. The deadline to register is October 9, 2020. A Dharma School representative will contact you with details after you register. If you have any questions, please call the Temple office at (206) 329-0800.

.....

2020 Hatsumairi Registration

Child’s Name _____

Male / Female _____

Month/Day/Year of Birth _____

Parent’s Name(s) _____

Mailing Address _____

City

State

Zip Code

Phone _____ E-mail _____

"SHIBAI: Seattle Japanese American Theater Collection"

Online Exhibit - Wing Luke Asian Museum
Submitted by Dana Nakashima

The Wing Luke Asian Museum in Seattle has created an online exhibit of Shibai-related items from the collections of the Seattle Betsuin and families of Shibai performers. The exhibit includes background information, costumes and props from Japanese plays and entertainment performed from the 1930s through the mid-1980s.

View the online Shibai Exhibit at <http://collections.wingluke.org/exhibits/show/shibai>

The exhibit was made possible through support from 4Culture, ArtsFund and the Guendolen Carkeek Plestcheeff Fund for the Decorative and Design Arts.

Special thanks to the following individuals and organizations for their contributions to the exhibit: Rinban Katsuya Kusunoki, Rev. Donald Castro, Rev. Masao Kodani, Ellen Hale, Sadie Yamasaki, Fusae Yokoyama, Stacy Nakata and Mark Yuasa, Susie Yamane and Kathy Hasegawa, Nina Tomita-Kato, Marianne Wick, Kasumi Yamashita, Joan Nakano, and Densho.

We are very grateful to the Wing Luke Asian Museum for their partnership and support. The Museum is currently closed but there are many ways to support the Museum. For more information, visit the Museum's website at <http://collections.wingluke.org/exhibits/show/shibai> and click the "Join+Give" tab.

Questions?

For additional information or questions, please contact Andrea Mano or Dana Nakashima (Seattle Betsuin Buddhist Temple) at office@seattlebetsuin.com.

The red portion of the flyer is the back of the red silk kimono that Kiki Hagimori wore during Shibai. The kimono is part of the exhibit and is on display. It is listed in the display, under the category of Shibai Costumes as Kimono #2. Mrs. Hagimori is wearing the red silk kimono in the black and white photo of her with Ted Tomita Sr, which is under the category of People in the exhibit.



Opening Online

<http://collections.wingluke.org/exhibits/show/shibai>

Presented with Seattle Betsuin Buddhist Temple

WING LUKE
MUSEUM

Support from 4Culture, ArtsFund and the Guendolen Carkeek
Plestcheeff Fund for the Decorative and Design Arts

719 S King St., Seattle, WA 98104 | 206 623 5124 | wingluke.org

Sat Ichikawa's Crystal City Camp Story

Sat Ichikawa is the son of the head minister of the Seattle Buddhist Church during the WWII years. In March, 1942, Rev. Tatsuya Ichikawa was taken from the family by the FBI. He was imprisoned in detention Centers in Montana, Texas, New Mexico and finally ended up at Crystal City in Texas. Sat, his mother and six siblings spent two years of incarceration at Minidoka before reuniting with Rev. Ichikawa.

Crystal City Camp Story is Sat's second book which tells the story of his final two years of incarceration at the Crystal City Camp. Originally written for his grandchildren, Sat also did all the illustrations. If you are interested in a copy, please contact Debbie Kashino at debbiekashino@gmail.com.

- DK:IHG

SEATTLE BETSUIN GRATEFULLY ACKNOWLEDGES THE DONATIONS RECEIVED FOR THE FOLLOWING SPECIAL SERVICES FROM DECEMBER, 2019 - JULY, 2020.

Please accept our apologies for any inadvertent misspelling or omission of names.

Bodhi Day (2019): Beard, Clara; Chinn, Connie Ozeki-; Desaki, Yasuko; Fujita, Florence; Hamakawa, Ron; Hamatani, Jane; Huh, Jamie; Kaku, Dale & Shizue; Kaminishi, Gail; Keltner, Marc & Janice; Kubo, Masako; Mar, Scott & Sibyl; O'Shields, Dean; Oxrieder, Gregory & Catherine Ann; Ramsey, Miya (Charlotte); Sato, Joyce; Shigaya, Teruko (Terrie); Shimada, Shirley; Shimbo, Ben & Etsu; Shimizu, Roy & Kazumi; Shimoide, Tadanobu Ted & Yumiko; Sumida, Leslie; Taketa, Sonoe; Tanaka, Rikuko; Tomita, Paul & Mabel; Uyenishi, Tazuko; Yokoyama, Fusae

Eitaikyo Muen Hoyo (2019): Beard, Clara; Sumida, Leslie; Tanaka, Rikuko

Ho'Onko: Akira, Donald & Karen; Anonymous; Arinobu, Gene & Yuki; Baba, Janet; Beard, Clara; Carpenter, Lani; Chinn, Connie Ozeki-; Chisholm, Steve & Lori; Dodobara, Kenneth & Yoshie; Fujii, Aiko; Fujinari, Suzanne; Fujino, Suteko (Sue); Fujita, Florence; Fukeda, Toshiko; Gotchy, Joseph & Margaret; Habu, Gordon & Mae Yamasaki-; Hamakawa, Ron; Hamamoto, Setsuko; Hanada, Peggy; Hara, Reiko; Harada, Setsuko; Hinds, Cynthia; Hoshino, Alan A. & Lori; Ichikawa, Satoru & Grace; Kaku, Dale & Shizue; Kaminishi, Gail; Kaneta, Miyoko; Kashima, Tetsuden & Cecilia Kanako; Kato, Nina Tomita-; Kawaguchi, Harold; Kawahara, Ritsuko; Keltner, Marc & Janice; Kikuchi, Shizue; Ko, Jeffrey & Tina Zumoto-; Kodagoda, Kimiko; Kogita, Takako; Kozai, Art & Lori; Kubo, Masako; Kunihiro, M. Caroline; Kuramoto, Wayne; Kuwahara, Kinue; Mamiya, Haruko; Mano, Mariko; Mayeda, Julie; Mizumori, Sheri; Mori, Paul Bruce & Teresa; Morikubo, Yukio & Karen; Nagai, Ernest & Sanaye (Sunnie); Nakabayashi, Kemi; Nakamura, Yoshio & Judith; Nakanishi, Kiyoko; Nakano, Craig & Joan; Nakano, Junko; Namekata, Tsukasa & Keiko; Nishizaki, Mabel; O'Shields, Dean; Okada, Barry & Marlene; Okada, Emiko; Oxrieder, Gregory & Catherine; Parke, Troy & Mayumi Terada-; Ramsey, Miya (Charlotte); Sakuma, Pauline; Sato, Joyce; Seko, Robert; Shahbaghlian, Patricia Oye-; Shibata, Dennis M; Shibata, Gary & Deborah; Shigaya, Kenneth; Shimbo, Ben & Etsu; Shimizu, Roy & Kazumi; Shimizu, Sato & Darlene; Shintaku, Frances; Suyenaga, Wayne; Suzaka, Gail; Tahara, Masaru & Anna; Takashima, Kiyoko; Taketa, Sonoe; Taketa, Susan; Tamekuni, Masao & Frances; Tanabe, Ilene Kawahara-; Tanaka, Rikuko; Tanemura, Kevin; Taniguchi, Fumie; Taniguchi, Theodore & Akico; Tazuma, Grace; Tazuma, Miyoko; Terada, Allan & Kayako; Terada, Calvin J. & Yvette; Terada, Ronald & Suzuko; Teramoto, Margaret; Teramoto, Stuart; Tomita, Paul & Mabel; Toyoshima, Michiko; Uchida, Sam & Masako; Wada, Machiko; Wong, Leanne Nishi-; Yabuki, Akiko; Yamane, Jeffrey & Susan; Yamasaki, Fujie; Yamashita, Dennis & Elaine Aoki-; Yanari, Yoko; Yokota, Sumie; Yokoyama, Kevin & Kari Ann; Yoshida, Fuyo; Yutani, Nobuo; Zumoto, James & Tomiko

Spring O-Higan: Akira, Donald & Karen; Bobrow, Patricia; Chinn, Connie Ozeki-; Dodobara, Kenny & Yoshie; Fujii, Aiko; Fujinari, Suzanne; Fujino, Sue; Fujita, Florence; Fukeda Toshiko; Goto, Irene; Habu, Gordon & Mae Yamasaki-; Hale, Ellen; Hamanaka, Yoko; Hanada, Miyuki; Hanada, Peggy; Hara, Reiko; Harada, Setsuko; Hasegawa, Kathy; Hatai, Susan, Huh, Jamie; Kakiuchi, George & Kayoko; Kaku, Dale & Shizue; Kaminishi, Gail; Kaneta, Miyoko; Kashima, Tetsuden & Cecilia Kanako; Kawahara, Ritsuko; Kawamoto, Masako; Keltner, Marc & Janice; Kogita, Takako; Kojima, Esther; Kozai, Art & Lori; Kozai, Yoshiko; Kunihiro, M. Caroline; Kuramoto, Wayne; Kuwahara, Kinue; Mano, George & Irene; Mizumori, Sheri; Mayeda, Julie; Mori, Paul Bruce & Teresa; Naemura, Joseph & Janie Okawa-; Nagai, Ernest & Sanaye (Sunnie); Nakabayashi, Kemi; Nakamura, Yoshio & Judith; Nakanishi, Kiyoko; Nakano, Craig & Joan; Nakano, Junko; Namekata, Tsukasa & Keiko; Nishizaki, Mabel; Nowlis, David; O'Shields, Dean; Okada, Barry & Marlene; Otsuji, Nobuko; Sako, Masako; Sakuma, Pauline; Seko, Robert; Shibata, Dennis M; Shigaya, Kenneth; Shigaya, Teruko (Terrie); Shimada, Shirley; Shimbo, Ben & Etsu; Shimizu, Roy & Kazumi; Shimizu, Sato & Darlene; Suganuma, Aiko; Suguro, Nori; Tahara, Masaru Anna; Takashima, Kiyoko; Taketa, Sonoe; Tamekuni, Masao & Frances; Tanabe, Ilene Kawahara-; Taniguchi, Theodore & Akico; Tanemura, Kevin; Tazuma, Miyoko; Terada, Allan & Kayako; Terada, Calvin J. & Yvette Terada, Ronald & Suzuko; Teramoto, Margaret; Teramoto, Stuart; Toyoshima, Michiko; Uchida, Sam & Masako; Uyenishi, Tazuko; Wada, Machiko; Yabuki, Akiko; Yahata, Shizue; Yamashita, Dennis & Elaine Aoki-; Yanari, Yoko; Yokota, Sumie; Yokoyama, Kevin & Kari Ann; Yutani, Nobuo; Zumoto, James & Tomiko

SEATTLE BETSUIN GRATEFULLY ACKNOWLEDGES THE DONATIONS RECEIVED FOR THE FOLLOWING SPECIAL SERVICES FROM DECEMBER, 2019 - JULY, 2020. Please accept our apologies for any inadvertent misspelling or omission of names.

Salmon Dinner Fundraiser: Akira, Donald & Karen; Asaba, Lauren; Asaba, Marian; Ashihara, Eric; Barba, Eleazar & Seiko; Beard, Clara; Butler, Lisa; Chinn, Connie Ozeki -; Deguchi, Aya (Jean); Deguchi, Janice; Dodobara, Kenny & Yoshie; Eng, Jimmy & Alicia Taniguchi-; Fujii, Aiko; Fujinari, Suzanne; Fujino, Suteko (Sue); Fukeda, Toshiko; Glasser, Bill & Beverly; Goto, Irene; Habu, Gordon & Mae Yamasaki-; Hale, Ellen; Hamamoto, Eileen; Hamamoto, Lori; Hamanaka, Yoko; Hanada, Peggy; Harada, Setsuko; Hasegawa, Kathy; Hatai, Susan; Hirata, Michiko; Hirota, Mark & Haru; Hokoda, Steven C. & Cathleen Marie; Huh, Jamie; Ichikawa, Satoru & Grace; Ikegami, Roy & Deanna; Ishimaru, Ann; Iwafuchi, Larry & June; Kaku, Brian & Kathleen; Kaku, Dale & Shizue; Kashima, Tetsuden & Cecilia Kanako; Kato, Gary & Madeline; Kato, Nina Tomita-; Kawaguchi, Arthur & Sally; Kawaguchi, Harold; Kawahara, Ritsuko; Kawahara, William & Beth; Kawamoto, Masako; Ko, Jeffrey & Tina Zumoto-; Kodagoda, Kimiko; Kogita, Takako; Kojima, Esther; Komoto, Bill; Kosai, Hiroko Janet; Kozai, Art & Lori; Kozai, Yoshiko; Kubo, Masako; Kubota, Janet; Kumasaka, Lisa; Kunihiro, M. Carolyn; Kuramoto, Wayne; Kusumi, Shogo & Fusako; Kuwahara, Kinue; Luke, Howard & Marie Kosai-; Mano, George & Irene; Mar, Scott; Matsubayashi, Hugh & Ivy Chen -; Mayeda, Duane & Ann; Mizumori, Sheri; Mori, Paul Bruce & Teresa; Moriguchi, Tomio & Yan Li (Jenny); Morikubo, Yukio & Karen; Naemura, Joseph & Janie Okawa; Nagai, Ernest & Sanaye (Sunnie); Nakamura, Ted; Nakanishi, Kiyoko; Nakano, Junko; Nakano, Craig & Joan; Nakayama, Curtis & Charlene; Namekata, Tsukasa & Keiko; Nishizaki, Mabel; Norton, Jim & Nakabayashi, Kemi; Ojima, Stephanie; Okada, Barry & Marlene; Okada, Emiko; Okumura, Tokuzo & Mari; Oxrieder, Gregory & Catherine Ann; Oye, Patricia; Saito, Irene; Sakuma, Pauline; Sato, Joyce; Scattergood, David & Joyce Tsuji-; Seko, Robert; Shibata, Dennis M.; Shigaya, Teruko (Terrie); Shimbo, Ben & Etsu; Shimizu, George; Shimizu, Roy & Kazumi; Shimizu, Sato & Darlene; Starbucks Coffee Company; Suetsugu, Jr., George; Suguro, Nori; Suguro, Paul; Suyenaga, Wayne; Suzaka, Gail; Tahara, Masaru & Anna; Takemura, Yoshiaki & Naomi; Taketa, Sonoe; Taketa, Susan; Tamekuni, Masao & Frances; Tanabe, Ilene Kawahara-; Tanaka, Rikuko; Tanemura, Kevin; Tanemura, Peggy; Taniguchi, Fumie; Taniguchi, Theodore & Akico; Taylor, Jay; Taylor, Mark & Erin; Tazuma, Grace; Tazuma, Miyoko; Terada, Allan & Kayoko; Terada, Calvin J. & Yvette; Terada, Ronald & Suzuko; Teramoto, Margaret; Teramoto, Michael S. & Gayle; Teramoto, Stuart; Tokita, Shokichi; Tokunaga, Dolly; Tomita, Paul & Mabel; Toyoshima, Michiko; Tracy, David; Uchida, Gayle; Uchida, Sam & Masako; Wada, Machiko; Wilson-Adams, Matthew & Jennifer Yogi; Wong, Rick & Leanne Nishi-; Yabuki, Akiko; Yamada, Arlene; Yamane, Jeffrey & Susan; Yamasaki, Sadie; Yamasaki, Steve & Valerie; Yamashita, Dennis & Elaine Aoki-; Yee, Fukuyo; Yocom, Kenneth & Anna Tamura; Yokota, Sumie; Yokoyama, Kevin & Kari Ann; Yoritsune, Charlene M.; Yoshimi, Crystal; Yutani, Nobuo; Zimmerman, Jeremy; Zumoto, Donna; Zumoto, James & Tomiko

Hanamatsuri: Akira, Donald & Karen; Anonymous; Asaba, Lauren; Baba, Janet; Beard, Clara; Bobrow, Patricia; Chinn, Connie Ozeki-; Chisholm, Steven & Lori; Dodobara, Kenny & Yoshie; Dominick, Yancy; Dykes, Burke C.; Fuji, Aiko; Fujino, Sue; Fujita, Florence; Fukeda, Toshiko; Goshu Kazumi (Janice); Gotchy, Joseph & Margaret; Goto, Irene; Habu, Gordon & Mae Yamasaki; Hale Ellen; Hanada, Peggy; Hara, Reiko; Harada, Setsuko; Hasegawa, Stephen; Hikida, Mary; Iwafuchi, Larry & June; Jacobs, Loraine; Kaku, Dale & Shizue; Kaminishi, Gail; Kaneta, Miyoko; Kashima, Tetsuden & Cecilia Kanako; Kashiwa, Kato, Nina Tomita-; Kawahara, Ritsuko; Kawamoto, Masako; Keltner, Marc & Janice; Kishi, Rose; Ko, Jeffrey & Tina Zumoto-; Kogita, Takako; Kozai, Art & Lori; Kubo, Masako; Kumasaka, Lisa; Kunihiro, M. Caroline; Kuramoto, Wayne; Mano, George & Irene; Mano, Mariko; Mar, Kenneth; Mayeda, Duane & Ann; Mizumori, Sheri; Mori, Paul Bruce & Teresa; Naemura, Joseph & Janie Okawa-; Nagai, Ernest & Sanaye (Sunnie); Nakamura, Yoshio & Judith; Nakanishi, Kiyoko; Nakano, Craig & Joan; Nakano, Junko; Nakashima, Craig & Dana; Namekata, Tsukasa & Keiko; Nishizaki, Mabel; Norton, Jim & Kemi Nakabayashi; Okada, Barry & Marlene; Okumura, Tokuzo & Mari; O'Shields, Dean; Oye, Patricia; Sakuma, Pauline; Sanchez, Angela (Seon); Sato, Joyce; Seko, Robert; Shibata, Dennis M.; Shigaya, Teruko (Terrie); Shimada, Shirley; Shimbo, Ben & Etsu; Shimizu, Sato & Darlene; Sumida, Leslie; Suzaka, Gail; Tahara, Masaru & Anna; Takamura, Kuniko; Takemura, Yoshiaki & Naomi; Taketa, Sonoe; Tamekuni, Masao & Frances; Takashima, Kiyoko; Tanabe, Ilene Kawahara-; Tanaka, Rikuko; Tanemura, Kevin; Taniguchi, Fumie; Taniguchi, Theodore & Akico; Tazuma, Grace; Tazuma, Miyoko; Terada, Allan & Kayoko; Terada, Calvin J. & Yvette; Terada, Ronald & Suzuko; Teramoto, Margaret; Teramoto, Stuart; Toyoshima, Michiko; Uchida, Sam & Masako; Uyenishi, Tazuko; Wada, Machiko; Yabuki, Akiko; Yagi, Victor; Yamamoto, Sharyl; Yamane, Jeffrey & Susan; Yamasaki, Fujie; Yanari, Yoko; Yocom, Kenneth & Anna Tamura; Yokoyama, Kevin & Kari Ann; Yoritsune, Charlene M.; Yoshida, Fuyo; Yoshimi, Crystal; Yutani, Nobuo; Zumoto, James & Tomiko

SEATTLE BETSUIN GRATEFULLY ACKNOWLEDGES THE DONATIONS RECEIVED FOR THE FOLLOWING SPECIAL SERVICES FROM DECEMBER, 2019 - JULY, 2020. Please accept our apologies for any inadvertent misspelling or omission of names.

Gotan-e: Akira, Donald & Karen; Baba, Janet; Beard, Clara; Chinn, Connie Ozeki-; Dodobara, Kenneth & Yoshie; Fujii, Aiko; Fujinari, Suzanne; Fujino, Sue; Fujita, Florence; Fukeda, Toshiko; Goto, Irene; Habu, Gordon & Mae Yamasaki-; Hanada, Peggy; Hara, Reiko; Harada, Setsuko; Huh, Jamie; Iwafuchi, Larry & June; Jacobs, Loraine; Kakiuchi, George & Kayako; Kaku, Dale & Shizue; Kaminishi, Gail; Kaneta, Miyoko; Kashima, Tetsuden & Cecilia Kanako; Kashiwa, Ann T; Kato, Nina Tomita-; Kawaguchi, Harold; Kawahara, Ritsuko; Kawamoto, Masako; Keltner, Marc & Janice; Kishi, Rose; Kogita, Takako; Kojima, Esther; Kozai, Art & Lori; Kumasaka, Lisa; Kunihiro, M. Carolyn; Kuramoto, Wayne; Kuwahara, Kinue; Mano, George & Irene; Mano, Mariko; Mayeda, Julie; Mizumori, Sheri; Mori, Paul Bruce & Teresa; Naemura, Joseph & Janie Okawa; Nagai, Ernest & Sanaye (Sunnie); Nakamura, Yoshio & Judith; Nakaniishi, Kyoko; Nakano, Craig & Joan; Nakano, Junko; Namekata, Tsukasa & Keiko; Nishizaki, Mabel; Norton, Jim & Kemi Nakabayashi-; Okada, Barry & Marlene; Okada, Emiko; Otsuji, Nobuko; Oye, Patricia; Parke, Troy & Mayumi Terada-; Sakuma, Pauline; Sato, Joyce; Seko, Robert; Shibata, Dennis M.; Shimada, Shirley; Shimbo, Ben & Etsu; Shimizu, Roy & Kazumi; Shimizu, Sato & Darlene; Sumida, Leslie; Tahara, Masaru & Anna; Takamura, Kuniko; Takashima, Kiyoko; Takemura, Yoshiaki & Naomi; Taketa, Sonoe; Tamekuni, Masao & Frances; Tanabe, Ileene Kawahara-; Tanemura, Kevin; Tanemura, Peggy; Taniguchi, Theodore & Akico; Tanino, Katsumi; Tazuma, Miyoko; Terada, Allan & Kayako; Terada, Alvin & Mitsuko; Terada, Calvin & Yvette; Terada, Ronald & Suzuko; Teramoto, Margaret; Teramoto, Stuart; Paul & Mabel; Toyoshima, Michiko; Uchida, Sam & Masako; Uyenishi, Tazuko; Wada, Machiko; Watanabe, Henry & Christy; Yabuki, Akiko; Yamasaki, Fujie; Yamashita, Dennis & Elaine Aoki-; Yanari, Yoko; Yokoyama, Kevin & Kari Ann; Yoshida, Fuyo; Yutani, Nobuo; Zumoto, James & Tomiko

Fall O-Higan (2019): Beard, Clara

Nirvana Day: Sumida, Leslie

New Years Eve & New Year Day: Demise, Jay & Alice; Garland, Karen; Hamakawa, Ron; Harano, Nelson; Hoshino, Alan A. & Lori; Ichikawa, Shinya & Jayne; Ito, Yaeko; Iwafuchi, Larry & June; Kosai, Hiroko Janet; Mizumori, Sheri; Nakamura, Kayoko; Suganuma, Aiko; Umeda, Susanne

All Sangha Memorial: Gosho, Kazumi (Janice); Harada, Setsuko; Kaneta, Miyoko; Kunihiro, M. Carolyn; Nishizaki, Mabel; Norton, Jim & Kemi Nakabayashi; Oye, Patricia; Takashima, Kiyoko; Tazuma, Grace; Tazuma, Miyoko; Terada, Ronald & Suzuko; Wong, Leanne Nishi-;

Bishop / Rinban Memorial: Kaneta, Miyoko; Norton, Jim & Kemi Nakabayashi; O'Shields, Dean

Atomic Bomb Memorial: Fujii, Aiko; Konko Church of Seattle; Kubo, Masako; Kunihiro, M. Carolyn; Linde, Dwayne; Seattle Hiroshima Club

Hatsubon / Obon: Aoki, Michele Anciaux-; Asaba, Lauren; Baba, Janet; Beard, Clara; Blackler, Allan & Lorraine; Bobrow, Patricia; Chinn, Connie Ozeki-; Chisholm, Steve & Lori; Deguchi, Janice; Dodobara, Kenny & Yoshie; Fujii, Aiko; Fujinari, Suzanne; Fujino Sue; Fukeda, Toshiko; Furukawa, Fred & Darlene; Glasser, Bill & Beverly; Habu, Gordon & Mae Yamasaki-; Hale, Ellen; Hamamoto, Eileen; Hamanaka, Yoko; Hanada, Peggy; Hara, Reiko; Harada, Setsuko; Hasegawa, Stephen; Hatai, Susan; Hikida, Mary; Huh, Jamie; Ichikawa, Satoru & Grace; Jacobs, Loraine; Kajimura, Isako; Kakiuchi, George & Kayoko; Kaku, Dale & Shizue; Kaminishi, Gail; Kaneta, Miyoko; Kashima, Tetsuden & Cecilia Kanako; Kato, Kazue (Katie); Kawaguchi, Harold; Kawahara, Ritsuko; Kawamoto, Masako; Keltner, Marc & Janice; Kishi, Rose; Kogita, Takako; Kojima, Esther; Kosai, Hiroko Janet; Kosai, June (Yoshie); Kosai, Mark & Sharon; Kozai, Yoshiko; Kumasaka, Lisa; Kunihiro, M. Caroline; Kusumi, Shogo & Fusako; Kuwahara, Kinue; Mano, George & Irene; Mano, Mariko; Mayeda, Duane & Ann; Mayeda, Julie; Mizoguchi, Allan & Ronalee; Mori, Paul Bruce & Teresa; Nagai, Ernest & Sanaye (Sunnie); Nakamura, Yoshio & Judith; Nakanishi, Kiyoko; Nakano, Craig & Joan; Nakano, Junko; Nakata, Robert & Sally; Nakayama, Curtis & Charlene; Namekata, Tsukasa & Keiko; Nishizaki, Mabel; Oye, Julie Ann; Okada, Barry & Marlene; Okumura, Tokuzo & Mari; Otsuji, Nobuko; Oye, Patricia; Parke, Troy & Mayumi Terada-; Sakuma, Pauline; Sanchez, Angela (Seon); Sato, Joyce; Seko, Robert; Shibata, Dennis M.; Shibata, Gary & Deborah; Shigaya, Kenneth; Shimada, Shirley; Shimbo Ben & Etsu; Shimizu, Roy & Kazumi; Shimizu, Sato & Darlene; Shintaku, Frances; Tahara, Masaru & Anna; Takamura, Kuniko; Takashima, Kiyoko; Takemura, Yoshiaki & Naomi; Taketa, Sonoe; Tanabe, Ileene Kawahara-; Tanemura, Kevin; Tanino, Katsumi; Tazuma, Grace; Tazuma, Miyoko; Terada, Allan & Kayoko; Terada, Alvin & Mitsuko; Teramoto, Margaret; Teramoto, Stuart; Toyoshima, Michiko; Uchida, Sam & Masako; Uyenishi, Tazuko; Watanabe, Henry & Christy; Wong, Leanne Nishi-; Yabuki, Akiko; Yahata, Shizue; Yamada, Arlene; Yamasaki, Fujie; Yamashita, Dennis & Elaine Aoki-; Yokota, Sumie; Yokoyama, Kevin & Kari Ann; Yoshida, Fuyo; Yoshimi, Crystal; Yutani, Nobuo

SEATTLE BETSUIN GRATEFULLY ACKNOWLEDGES THE DONATIONS RECEIVED FOR THE FOLLOWING SPECIAL SERVICES FROM DECEMBER, 2019 - JULY, 2020. Please accept our apologies for any inadvertent misspelling or omission of names.

VIRTUAL BON ODORI DONATIONS:

Allan & Kayako Terada	Hatsune Tokita & Meryl Tsukiji	Megan Christy
Stan & Terri Terada	Irwin Yoshimura	Michael & Gwen Florence
Suzuko Terada	James & Tomiko Zumoto	Michael Teramoto
Theo Bickel	Janet Baba	Miyoko Nather
Alex Peterson	Janet Kubota	Nicole Carter
Alex Sakamoto	Janet Masuo	Nina Tomita-Kato
Andrea Mano	Janie Okawa	Pamela Okano
Ann Oxreider	Jeff & Susie Yamane	Patricia Oye
Beatriz Wallace	Jim Norton & Kemi Nakabayashi	Rae Hanashiro
Bill Tashima	Joe & Margaret Gotchy	Rick & Nancy McManigal
Bruce Brundige & Grace Tazuma	John & Lisa Duff	Ron Hamakawa
Brundige Wealth Mgmt LLC	Julie Ann Oiye	Ryan & Stacy Nakata
Campfire	June Iwafuchi	Sally Kawaguchi
Candace Yapplee	Kai Fujita	Sam Umeda
Carmel Sasaki	Kate Wehr	Sanaye Nagai
Carol Aoki-Kramer	Kathy Hasegawa	Sato & Darlene Shimizu
Carolyn Mawbey	Katsumi Tanino	Sheri Mizumori
Carrie Wong	Kelly Enstrom	Shizue Yahata
Charlene Yoritsune	Kevin & Kari Ann Yokoyama	Susan Brower
Chris Grabowski	Kinue Kuwahara	Terada Family
Connie Okada	Kiyo Takashima	Terry & Gail Suzaka
Connie Ozeki Chinn	Kurt Armbruster	Tetsuden & Kanako Kashima
Connor McKinney	Kym Kinoshita	Theresa Ferry
Craig, Joan & Quinn Nakano	Leanne & Rick Nishi-Wong	Tim & Yoko Cullinan
David Tracy	Lee Marlin Schneider	Tom & Bev Sakamoto
Dean O'Shields	Lisa Lindstrom	Tyler Moriguchi & Thy Pham
Eileen Tokita	M. Carolyn Kunihiro	Uwajimaya Inc.
Elise & John Lindseth	Machiko Wada	Wayne Kuramoto
Gail & Terry Suzaka	Marie Harwell	Yoko Yanari
Georgette Magnin	Mark & Sharon Kosai	
Gerrie Hashisaki	Marlene Okada	
Harry Yoshimura	Mas & Frances Tamekuni	

###

OCTOBER 2020 BETSUIN SCHEDULE

	Sunday	Monday	Tuesday	Wednesday	Thursday	Friday	Saturday
	<i>To view all services, please visit http://www.youtube.com/seattlebuddhisttemple</i>				1 10 am livestream Morning Service	2 <i>Rinban's day off</i> 10 am Japanese Play Group on Zoom	3 10 am livestream Joint Memorial Service 12:45-3:15 pm Women in Buddhism Webinar
	NOVEMBER 2020 SPECIAL EVENTS Nov 15 Eitaikyo/Muen Hoyo Service guest speaker Rev Noritaka Imada, Tri-State Denver Nov 22 Autumn Family Music Svc by NW District						
4	9 am Meditation on Zoom 10 am ESHINI-KO & KAKUSHINI-KO SERVICE English Dharma Talk, Rev Patti Usuki Jpns Dharma Talk, Rev Etsuko Mikame 11am Sangha Exchange on Zoom 12:45-3:15 pm Women in Buddhism Webinar	5 10 am livestream Morning Service 11 am Seattle Japanese Dharma Gathering - Zoom	6 <i>Rinban's day off</i>	7 10 am livestream Morning Service 11 am Sutra Chanting & Dialogue - Zoom	8 10 am livestream Morning Service 10 am Japanese Play Group on Zoom	9 <i>Rinban's day off</i>	10 10 am livestream Joint Memorial Service-CANCELED 1-6 pm FDSTL Virtual Conference
11	9 am Meditation on Zoom 10 am SUNDAY SERVICE streamed on YouTube Adult Service Japanese Service 11 am DS Dharma Exchange on Zoom	12 10 am livestream Morning Service 11 am Seattle Japanese Dharma Gathering - Zoom	13 <i>Rinban's day off</i>	14 10 am livestream Morning Service 11 am Sutra Chanting & Dialogue - Zoom	15 10 am livestream Morning Service 10 am Japanese Play Group on Zoom	16 <i>Rinban's day off</i> 10 am Japanese Play Group on Zoom	17 10 am livestream Joint Memorial Service
18	9 am Meditation on Zoom 9:30 am HATSUMAIRI CEREMONY SVC on Zoom 10 am SUNDAY SERVICE streamed on YouTube Adult Service Japanese Service 11 am Sangha Exchange on Zoom	19 10 am livestream Morning Service 11 am Seattle Japanese Dharma Gathering - Zoom	20 <i>Rinban's day off</i>	21 10 am livestream Morning Service 11 am Sutra Chanting & Dialogue - Zoom	22 10 am livestream Morning Service 10 am Japanese Play Group on Zoom	23 <i>Rinban's day off</i>	24 10 am livestream Joint Memorial Service
25	9 am Meditation on Zoom 10 am SBBWA MEMORIAL SVC combined with SUNDAY SERVICE streamed on YouTube Adult Service Japanese Service 11:00 am DS Dharma Exchange on Zoom	26 10 am livestream Morning Service 11 am Seattle Japanese Dharma Gathering - Zoom 8 pm Newsletter deadline	27 <i>Rinban's day off</i>	28 10 am livestream Morning Service 11 am Sutra Chanting & Dialogue - Zoom	29 10 am livestream Morning Service 10 am Japanese Play Group on Zoom	30 <i>Rinban's day off</i> 10 am Japanese Play Group on Zoom	31 10 am livestream Joint Memorial Service

Seattle Buddhist Church
1427 S Main Street
Seattle, WA 98144

2020 October
Wheel of the Sangha
A Monthly Newsletter of
Seattle Buddhist Church

YBE'S BOOK CLUB FOR
OPTIMISTIC PEOPLE:
[https://
www.youngbuddhisteditorial.com/
bookclub](https://www.youngbuddhisteditorial.com/bookclub)

The flyers below, in more detail, are available at <https://www.BuddhistChurchesOfAmerica.org/>

Women in Buddhism:
Tools for Spiritual Wellness

A Webinar Gathering
October 3 & 4, 2020



Inspiring • Insightful • Practical

Explore spiritual wellness through
Jodo Shinshu, Vipassana, Yoga,
Brain Health and Art-Making.

Speakers:

Camela Javellana Hirano, M.D.
"Radical Humility:
Jodo Shinshu Path to Gratitude & Joy"

Bonnie Duran, Ph.D.
"Using Mindfulness & Dharma
to Undo Internalized
Negative Stereotypes"

Sharon A. Suh, Ph.D.
"Filling Our Spiritual Well from
the Inside Out: Healing from Trauma
Through Meditation & Yoga"

Sheri Mizumori, Ph.D.
"Brain Health and
Everyday Mental Well-Being"

Tara Tamaribuchi, BFA
"Self-Renewal Through the Hand:
Art as Release"

Registration: Free
Donations gratefully accepted: \$15 per day

Presented by:




Seattle Betsuin Buddhist Temple
& Women's Association

Co-sponsor:
BCA Center for Buddhist Education

REGISTRATION & DETAILS:
seattlebetsuin.com/2020wib




BCA CENTER FOR BUDDHIST EDUCATION
&  TECHNObUDDHA
PRESENTS...

Saturday, October 10
10am - 12pm (PDT)
Free & open to everyone

Good Trouble!

"I don't think slavery ended in 1865... I think it just evolved."
-Bryan Stevenson

Tens of thousands marched throughout America, and around the world, following the horrific death of George Floyd. What led to this seemingly sudden outpouring of solidarity? How do we deal with the burden of injustice, and of racial inequality? How can we awaken to our history of depraved indifference and brutality?



Richard Stambul
Attorney, past BCA President, Foot soldier in the Civil Rights movement, Trustee of the Institute of Buddhist Studies.

Rick Stambul practiced law for 41 years in Los Angeles, New York, and Washington, D.C., with a focus on issues of Social Justice. He was a past BCA President. He received his B.A. in History from UCLA, and a J.D. from Loyola Law School where he taught as a Teaching Fellow. He has lectured about his involvement as a foot soldier in the Civil Rights movement and the incarceration of Japanese-Americans during WWII throughout the United States. He is co-author of Lawless Law Enforcement (4 Loyola Law School of L.A. Law Rev. 161, 1971) discussing police brutality targeting the African-American community.

CLICK BELOW TO REGISTER:
[<https://forms.gle/Kh2kzknEmGqht997>] or [<https://buddhistchurchesofamerica.org>]

Registration is FREE – Donations gratefully accepted – CLICK TO DONATE
(Scroll campaigns to select CBE. Donations are processed by BCA Endowment Foundation)

CONTACT CBE: cbe@bcahq.org | 510.809.1460

BCA Center for Buddhist Education
Every Day Buddhism Committee online
Seminar



SAVE THE DATE:
OCTOBER 24,
2020
10 am to 12 pm

Dharma in Your Life

"How to find and apply the
Dharma into your life."

Contact Us

Seattle Betsuin Buddhist Temple
1427 S Main Street
Seattle, WA 98144
Phone: 206. 329.0800
Fax: (206) 329-3703
Email: office
@SeattleBetsuin.com

Visit us on the web at
WWW.
SeattleBetsuin.com

Office Hours:
Mon-Fri 9am—3pm

Minister 24 hours:
206.779.2214
Rimban:
Rev Katsuya Kusunoki

BCA Connect (Buddhist Churches of America)

Sign up! The BCA newsletter is where you can find all the temples' live-streams, workshops, and messages from temples across the country.

[https://
www.buddhistchurchesofamerica.org/
connect/](https://www.buddhistchurchesofamerica.org/connect/)

Wheel of the Sangha Editors
Irene Goto, English: newsletter@seattlebetsuin.com
Machiko Wada, Japanese: newsletter-jpn@seattlebetsuin.com
Deadline is the third Monday each month at 8PM