

# Wheel of the Sangha

Volume 27 Issue 12 December 2008  
A monthly publication by **Seattle Buddhist Church**  
*May peace and tranquility prevail  
throughout the world*

## Seattle Buddhist Church

1427 South Main Street  
Seattle, WA 98144

Tel: (206) 329-0800

Fax: (206) 329-3703

[www.SeattleBetsuin.com](http://www.SeattleBetsuin.com)

[Office@SeattleBetsuin.com](mailto:Office@SeattleBetsuin.com)

### New Office Hours

Mon-Sat 9:00am-3:00pm

### Ministers

Rinban

Hoshu Matsubayashi

Day: (206) 380-9911

Night: (425) 235-7242

Reverend Don Castro

24 hours: (206) 779 -2214

### Wheel of the Sangha

NEWSLETTER STAFF

**Editors:** English - Irene Goto

[Newsletter@SeattleBetsuin.com](mailto:Newsletter@SeattleBetsuin.com)

Japanese - Machiko Wada

[OHNewsletter-Jpn@SeattleBetsuin.com](mailto:OHNewsletter-Jpn@SeattleBetsuin.com)

### Printing & Circulation:

Jim Akizuki, Alan Groves

Mickey Hiroo, Shizu Kaku,

Harry Shigaya, Elmer Tazuma

### Seattle Betsuin Vision

*Embrace true and  
real life  
in Nembutsu*



### Seattle Betsuin Mission

*Promote, protect, and  
share the Buddha,  
Dharma and Sangha*

## December 2008/January 2009 Special Events

- BODHI DAY SERVICE/POTLUCK DECEMBER 7 10AM/NOON
- BETSUIN GENERAL MEETING DECEMBER 14 11:00 AM
- CHILDREN'S CHAPEL SERVICE DECEMBER 14 10:00 AM
- ALL TEMPLE CLEAN-UP DECEMBER 21
- **TEMPLE CLOSED** DECEMBER 25
- JOYA-E NEW YEAR'S EVE SERVICE DECEMBER 31 7:00 PM
- NEW YEAR'S DAY SERVICE JANUARY 1 10:00 AM
- BETSUIN NEW YEAR PARTY JANUARY 11
- HO-ONKO SERVICE JANUARY 18 10:00 AM

<p><b>1</b> Temple Contact Information <b>2</b> Calendar, Newsletter Deadline: <b>Dec 15</b></p>	<p><b>3</b> Rinban's Message, <b>4</b> Camp Fire, Dharma Exchange Okesa Orders</p>	<p><b>5</b> Rev Castro, Mas Tahara <b>6</b> Membership, Save Our Planet, Fall Seminar</p>	<p><b>7</b> SBBWA <b>8</b> Dharma School, Bodhi Day Potluck, NY Party Tickets Info, SBC General Meeting Announcement</p>	<p><b>9</b> SBC Donations, ABA's Hawaiian Breakfast, Northwest Convention Invitation <b>10</b> Dharma Exchange</p>
--	--	---	--	--

## Betsuin Events for December 2008

### SUNDAYS

December 7 Bodhi Day Service  
10:00 am FAMILY SERVICE  
Children: Rev. Warrick  
Adult: Rev. Warrick  
Japanese: Rinban Matsubayashi  
DX: MA Joe Schwab  
12:00 pm Bodhi Day Potluck Luncheon  
1:00 pm Karuna/Sangha Award Class (MA)  
3:00 pm Spokane Bodhi Day Service (Rev. Castro)

December 14 Betsuin General Meeting **11:00 am**  
10:00 am (Children's Service in Chapel)  
Children: Rev. Castro  
Youth: Rev. Warrick  
Adult: Rev. Castro  
Japanese: Rinban Matsubayashi  
DX: No Dharma Exchange

December 21 Betsuin Clean-up  
10:00 am  
Adult: Rev. Castro  
Japanese: None  
DX: None  
1:00 pm Karuna/Sangha Award Class (Rev. Castro)

December 28 Rinban Matsubayashi (Vacation)  
10:00 am  
Adult: Rev. Castro  
Japanese: None  
DX: MA Joe Schwab

### MONDAYS

December 1 Rev. Castro (Vacation)  
December 8  
10:30 am Keiro - Bodhi Day Service (Rinban Matsubayashi & Rev. Castro)  
December 15, 22, 29 Rinban Matsubayashi (Days off)

### TUESDAYS

December 2 Rev. Castro (Vacation)  
December 9 Rev. Castro (Day off)  
December 16 Rinban Matsubayashi (Day off)  
December 23 Rinban Matsubayashi (Vacation)  
10:00 am Keiro Service (Rev. Castro)  
December 30 Rev. Castro (Vacation)

### WEDNESDAYS

December 3 Rev. Castro (Vacation)  
7:30 pm Dharma School Board Meeting (Rinban Matsubayashi)  
7:30 pm Dharma School Board Meeting (Rinban Matsubayashi & Rev. Castro)  
December 10 Rinban Matsubayashi (Day off)  
December 17 10:30 am Ministers' Meeting (Rinban Matsubayashi & Rev. Castro)  
December 24 Rinban Matsubayashi (Vacation)  
December 31 Rev. Castro (Vacation)  
7:00 pm Joya-E New Year's Eve Service (Rinban Matsubayashi and Rev. Warrick)

### THURSDAYS

December 4 Rev. Castro (Day off)  
1:30 pm Nikkei Manor Service (Rinban Matsubayashi)  
December 11  
6:30 pm Ministerial Affairs Meeting (Rinban Matsubayashi & Rev. Castro)  
**No Religious Department Meeting**  
7:30 pm Betsuin Cabinet Meeting (Rinban Matsubayashi & Rev. Castro)  
December 18  
1:30 pm Nikkei Manor Service (Rinban Matsubayashi)  
7:30 pm Betsuin Board of Directors Meeting (Rinban Matsubayashi, Rev. Castro & Rev. Warrick)  
December 25 **TEMPLE CLOSED**

### FRIDAYS

December 5 Rinban Matsubayashi (Day off)  
December 12  
December 19  
December 26 Rinban Matsubayashi (Vacation)

### SATURDAYS

December 6  
12:00 noon Gojikai Ho-Onko Service & Meeting (Rinban Matsubayashi & Rev. Castro)  
2:30 pm Ministers Meeting (Rinban Matsubayashi & Rev. Castro)  
December 13  
4:00 pm Mongolian Buddhist Class (Rev. Castro)  
December 20 Rev. Castro (Day off)  
December 27 Rinban Matsubayashi (Vacation)  
4:00 pm Mongolian Buddhist Class

### **January 2009: Major Events of Interest**

January 1 Thursday New Year's Day Service (Shusho-E)  
January 11 Sunday New Year's Party  
January 18 Sunday Ho-Onko Service

New Office Hours:  
Seattle Betsuin Buddhist Temple  
**9:00 am – 3:00 pm Monday - Saturday**

**NEXT NEWSLETTER DEADLINE: December 15, 2008 8:00 PM**

Email Articles to: Newsletter@SeattleBetsuin.com **Print on December 19, 2008**



## Shinran's Tears of Joy and Sorrow -To Attain the State of Enlightenment- Rinban Hoshu Y. Matsubayashi, Ed.D.

In the first week of September, my wife and I visited Japan. We visited our mother temple Hongwanji in Kyoto and also my home temple Fukusenzji in Shimane Prefecture. In the early Sunday morning of September 7, my wife and I stayed at a hotel in Izumo City, Shimane Prefecture on the way back to Tokyo. Since I woke up early in the morning due to jet lag, I turned on the television in the hotel room. It was an NHK education program, "the Spiritual Era – Religion and Human Life." The speaker was Lecturer Wei Zhang of Dobo University and her topic was "**Led by Shinran's Tears.**"

Ms. Zhang was born in Changchu, China and experienced the Chinese Cultural Revolution. As she experienced fierce incidents during the revolution, she started to work on the translation of the writings of a Japanese proletarian novelist Hiroshi Noma. While she was working on the Chinese translations of Noma's writings, she learned about Shinran Shonin. Mr. Noma presented her Shinran's main writing, *Kyo Gyo Shin Sho*, or *Teaching, Practice, Awakening, and Enlightenment* and other writings. After she studied Shinran, she wrote a book entitled *Literature of Hiroshi Noma and Shinran – Logic of Salvation for Evils* and she also published a book of her public lecture entitled *The Nembutsu Echoes Beyond the Ocean*.

Shinran's tears in her speech, "Led by Shinran's Tears," can be found in a statement of *Tanni-sho*, Chapter II, "Since I am incapable of any practice whatsoever, hell would definitely be my dwelling anyway." Shinran cried tears of sorrow when he had the profound realization of human nature, which disabled him from attaining enlightenment. This realization is the same as Shan-tao's realization that "we have no chance for liberation." In his tears of sorrow, he found that the absolute compassion of Amida Buddha which embraces all people to lead to enlightenment. She discovered the essence of Shinran's teachings which assured ordinary people they can attain enlightenment by Amida Buddha's compassion.

Ms. Zhang found the essence of Shinran's teachings in his *Shoshin-ge* in the following lines:

**When ordinary people and sages as well  
as those who commit the gravest  
offenses and abusers of the Buddha  
Dharma are taken into the Amida**

**Buddha's Primal Vow, they become one in  
spiritual attainment, just as many rivers  
become of one taste upon entering the  
sea.**

I have read the *Shoshin-ge* numerous times since my childhood without realizing the essence of Shinran's teachings. As Ms. Zhang pointed out, when Shinran was awakened to the absolute compassion of Amida Buddha, his tears of sorrow turned into tears of joy. Thus, Shinran had both tears of sorrow and joy and Shinran showed us how the joyful realization was achieved in the final part of the *Kyo Gyo Shin Sho, Teaching, Practice, Awakening and Enlightenment* as follows:

**How joyous I am, my heart and mind  
being rooted in the Buddha's ground of  
universal Vow, and my thoughts and  
feelings flowing within the Dharma ocean,  
which is beyond comprehension! I am  
deeply aware of Amida Buddha's  
immense compassion...**

The essence of Shinran's teachings reminds us that in order to turn tears of sorrow to tears of joy, we have to be awakened to Amida Buddha's compassion. The *Shoshin-ge* explains that we can attain enlightenment with our ordinary human natures -- "**If the single thought of entrusting heart in Amida Buddha is awakened in us, we shall attain Nirvana without severing our blind passions.**"

Shinran encouraged us to entrust in Amida Buddha's Primal Vow in the *Hymns of the Dharma-Ages* as follows:

**Entrust yourself to Amida Buddha's  
Primal Vow. Through the benefit of being  
grasped, never to be abandoned, all who  
entrust themselves to the Primal Vow  
attain the supreme enlightenment.**

December is the month of Bodhi (enlightenment) Day. Shinran Shonin taught us that we can all attain Bodhi (enlightenment) by oneness with Amida Buddha's Primal Vow – the great compassion and wisdom.

Namo Amida Butsu

## CAMP FIRE

**Starflight Pre-K/Kindergarten** Our Starflight group attended a Halloween party hosted by the Adventure group on 10/16. The girls came dressed up in their Halloween costumes. They played a "mummy wrap game" and another highlight was the mad science lab. The girls had a great time. We will be working on making decorations for Wisteria Manor at our next meeting.

**Adventure 3/4** Last weekend, our group hosted a Halloween Party for the Pre-K/Kindergarten Starflight group. The girls planned and set up decorations, games and refreshments for the party. We had great turn-out. All the girls participated in a "Mummy Wrap" contest, with several girls volunteering to be wrapped like mummies with toilet paper. We had a "Mad Scientists Lab" with many super-gross items, like slimy worms, eyeballs, brains and intestines, for the girls to touch and feel. Then, we finished with some great snacks. Thanks to our girls and their families for providing party decorations, set-up/clean-up and all of the tasty treats. Thanks to Lauren for the "thank you" notes. And, special thanks to the Pre-K/Kindergarten group for attending our party, and for the great goodie bags.

**Hummingbirds** After months of planning and work parties, the Hummingbirds put on its 2nd annual Starflight Carnival, "Fun Under the Hawaiian Sea" on Nov. 9th. There were about 35 guests (ages 3-8 years old), including Starflight Rainbows, the new PreK-K group, a few Camp Fire students from outside groups, and siblings. Guests were greeted with Hawaiian candy leis, and ushered in for a sing-along of Camp Fire classics. Then, they were let loose into the gym for carnival games like a cupcake walk, face



painting, coconut bowling, go fish, spin the shark, freshly popped popcorn and much more!

We'd like to thank our parents for helping with set up and clean up; Marisa and Kayla H. for being special helpers;

and to the Helping Hands team of Koki, Kayla and Emma for spearheading the project. Thanks also to Lisa, Steve and Penny for acting as parent advisors.

The Starflight Carnival had two service components: 1) a fun, free activity for Starflight kids; and 2) gathering donations for Heifer International. We collected \$180! Thanks to all families for their generous support. The carnival was also an important leadership exercise. They worked hard to execute the carnival, including coming up with a comprehensive plan and time line; making a lot of decisions (some by committee, some by group vote); collecting and organizing prizes; making the candy leis, shrink-dink emblems, bookmarks, signage; and practicing songs. This project further developed their leadership and communication skills, including presenting a funding request at a CF leaders meeting. They look forward to next fall's carnival!

**Discovery/Horizon** The Discovery/Horizon group has been busy this fall with Japanese cultural activities. On September 28th, Janet Baba, Penny Atcheson, and Dee Goto presented the "Omoide" project on Internment Camps. On October 12th Florence Sumida, Aiko Fujii, and Ritsuko Kawahara demonstrated a Japanese tea ceremony. On October 26th Shizue Yahata taught furoshiki wrapping. We would like to extend our thanks to these individuals for sharing their expertise!

Submitted by Dana Nakashima

---

GO PAPERLESS! THIS NEWSLETTER IS NOW ONLINE AT [WWW.SEATTLEBETSUIN.COM](http://WWW.SEATTLEBETSUIN.COM) Contact the temple office at 206-329-0800 or email [Newsletter@SeattleBetsuin.com](mailto:Newsletter@SeattleBetsuin.com) to have your name removed from the mailing list and jump online! Thank you!

---

Notes from Dharma Exchange ... *will be available on the Internet at [www.seattlebetsuin.com](http://www.seattlebetsuin.com) starting in December. Thank you, Pat Bobrow, for keeping us all apprised of Dharma Exchange discussion.*

---

ORDER AN OKESA ON DECEMBER 7 AND 14 ... during regular Sunday hours. Photos of choices are displayed in the foyer. See Irene Goto

# I AM A (DEWDROP) LINK

by Reverend Don Castro

In last month's newsletter, I wrote of bubbles, dew drops, balloons and the current economic crisis. While writing this month's article on interdependence, I was called to the hospital where someone relatively young died unexpectedly, I knew the person rather well and am deeply saddened. From the big picture of economics, I was led to the tragedy of an extended family. Yes, the metaphor of fragile dew drops applies to everything but our emotional attachment is to those we love. I think of the famous haiku poet Issa's poem on the death of his daughter: "*This dew drop of a world/ Indeed it is a dewdrop/ And yet, and yet...*" He is saying that, intellectually, he knows that this is a dewdrop of a world; he is a devout Buddhist after all. But, he cannot express in words the depth of his emotions when his child dies.

All conditioned existence is subject to change. This is a basis tenet of Buddhism, as is the teaching of interdependence. When conditions change, the consequences can be profound. To demonstrate the

profound nature of interdependence, a great Chinese teacher displayed a golden statue of a lion. He then surrounded the statue with mirrors so that the image was reflected myriads of times. Like the statue, everything stands in profound relationship and shares a common life. How powerfully we experience this truth in our family's joys and suffering. In a different arena we see this truth in the interrelationship and mutual identity of economies, where the failure of one major economy like ours ripples throughout the world.

Each Sunday we proclaim the truth of interdependence and commit ourselves to making a positive difference. "I am a link in Amida's Golden Chain of love that stretches around the world. I must keep my link bright and strong...knowing that on what I do now depends not only my happiness or unhappiness but also that of others."

With such a commitment as the Golden Chain, I think any economic system would thrive in the same way that any family will thrive.

---

## MANY FACES OF BUDDHA

by Mas Tahara

It was a morning like any other morning. Anna and I woke up a little past 4 a.m., got ready to leave for our usual drive to the gym where she would swim in the pool while I'd be on a treadmill for one hour. Just then she was struck with a stroke, blood vessels bursting in the left side of her brain. From that moment on, the experience I have gone through made me realize how true and real the teachings of Jodo Shinshu Buddhism really is.

Through many lectures, classes and the Sunday services I attended, I learned to regard everyone I come across in daily life as a Buddha that tries to teach me to learn and acquire as much of wisdom, to see myself as others see me, to be humble and compassionate, and to appreciate preciousness of life. At least I try as much as I can.

The day Anna became ill and the days afterward, I encountered many people that I regard as an assembly of Buddha. The first team of Buddha arrived wearing the firefighters' uniforms. They handled her down on the floor gently but professionally, administering whatever necessary to slow down the damaging effects of the blood spreading in her brain. They were joined by the ambulance attendants who took both of us to the

emergency unit of a hospital. There I came in contact with many doctors, nurses, and attendants in the emergency unit, ICU, and rehab center. They all focused on saving Anna's life, minimizing the damage, stabilizing her condition and helping overcome the illness. They were the Buddha of mercy, with deep knowledge, wisdom and compassion.

Despite their own busy schedules, Anna's relatives, coworkers and friends visited her all the time, filling the room with more than 30 pots and vases of beautiful and fragrant flowers, with many, gifts, cards and balloons –and joyous laughter. Anna did enjoy the visitors since they all gave her encouragement and hope for a quick and complete recovery.

Anna continues to receive therapies as an outpatient and is improving each day. As I watch her progress and reflect on how sick she was less than a month ago, I think of many people who came in contact with Anna when she needed help so desperately. I regard them as the Buddha of Many Faces who not only helped Anna, but taught me to appreciate life as given to each of us.

•••



On behalf of the SBC Membership Committee... by Steph Ojima

We would like to "thank" the following regular members, for contributing at least the minimum annual Ijikai dues (the basic dues toward the Temple maintenance/operations). This is a list of those paid members that have posted dues since our last month's posting:

Jeffrey Clark, Frances Kobayashi, and Mitsuo Yamamura

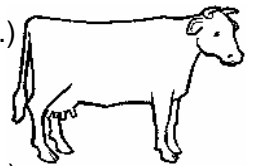
\*AS A REMINDER: The basic dues towards the Church maintenance/operations, is \$250 for those over 70 years of age and \$300 for those under 70 years old. Payments are due by September 30, 2009. If you have any questions about your membership status, please contact Howard Luke or Steph Ojima by way of the Betsuin office: 206-329-0800 or [office@seattlebetsuin.com](mailto:office@seattlebetsuin.com)



## LARGE AND SMALL THINGS YOU CAN DO TO SAVE OUR PLANET

by Gail Kaminishi

- Use only the water you need.
- Eat a healthy balanced diet. (Cows create greenhouse gases.)
- Use biodegradable products.
- Use energy saving light bulbs.
- Recycle all you can. (Downsize your garbage can?)
- Don't waste energy. (Make lists for your car trips; shop online.)



Please send any of your ideas to [newsletter@seattlebetsuin.com](mailto:newsletter@seattlebetsuin.com) or send by mail to the office.

## Fall English Seminar

With Reverend Dr Taitetsu Unno and Mrs Alice Unno



The annual Fall English Seminar was enjoyed by 36 registered attendees for the all-day event at Seattle Betsuin on Saturday, November 8, 2008. Guest speaker Reverend Dr Taitetsu Unno and his wife Alice Unno answered questions regarding three chapters chosen by Unno Sensei from his book, River of Fire, River of Water. Questions were concerned with *Amida*, *nembutsu*, *shinjin*. Frequent break periods and the cozy dining room seemed to be conducive for the lively discussions that took place. Several attendees were from outside our temple, and new to Jodo

Shinshu. Thank you, to Joyce Tsuji, Dave Scattergood, Eva, and Kyle, for assisting in childcare, bento delivery and photography. Sat Ichikawa provided the group photo; many pitched in with check-in, set-up and clean-up. Terrie Tanino arranged housing, John Litz paid the bills, and Rinban and Mrs Matsubayashi hosted Reverend and Mrs Unno during their weekend stay. Thank you, ALL, who attended to make the day so meaningful.

River of Fire, River of Water is available over the internet and in limited supply in the Seattle Betsuin book store.  
Gassho Irene Goto

## SBBWA Betsuin Newsletter Articles for December 2008

### SBBWA December Betsuin Newsletter Article submitted by Terrie Tanino

On October 26<sup>th</sup>, the SBWA held an Annual Memorial Service in honor of 696 former members. Rev. Tetsuo Unno, former resident minister at the Seattle Betsuin was the guest speaker for the event. Thank you to the two VP's, Janet Baba, Machiko Wada and Membership Committee for planning and coordinating the program. The service was chaired by Fran Shintaku; Words of Tribute were given by Yoshie Hiroo and Kinue Kuwahara in English and Japanese language respectively and an acknowledgment was made by President, Terrie Tanino.

I thank all the members that participated in conducting the annual event and most of all, to the families, friends and members of the community for their attendance.

Food Committee Chair, Ritsuko Kawahara and BWA ladies gave a "hands on" experience in making omochi and inarizushi. Ten students of Joyce Kato's Karuna class participated in this session. Another food session will be held on the 23<sup>rd</sup> of November.

### Memorial Service donations 10/26/08 submitted by Treasurer, Mabel Nishizaki:

Y. Abe, H. Adachi, T. Akada, L. Akizuki, Anonymous, M. Aoki, R. Aoki, S. Aoyama, H. Aramaki, Y. Arinobu, M. Asaba, J. Baba, J. Deguchi, M. Deguchi, Y. Desaki, T. Enomoto, A. Fujii, B. Fujiki, S. Fujino, L. Fujita, T/F. Fujita, T/L. Fujita, G/T. Fukeda, B. Fukei, M. Fukuhara, M. Fukuma, M. Furuta, K. Goshu, M/H Goto, F. Groves, J/M. Hamakami, R. Hamamura, G. Hamano, F. Hanada, M. Hanada, P. Hanada, H/M. Harada, M/S. Harada, T/M. Harada, H. Hasagawa, S. Hayami, A. Hirasawa, E. Hiroo, M. Hiroo, C. Honmyo, L. Hori, N. Horikawa, M. Hosoda, R. Iguchi, J/M. Ike, M. Imabori, E. Imanishi, H. Ise, I. Iseri, T. Isomura, Y. Iwai, K. Iwamura, Y. Iwamura, S. Kaku, T/S. Kameda, D. Kanno, G. Kasahara, T. Kashima, T/M. Katayama, Y. Katayama, H. Kato, N. Kawada, M. Kawaguchi, B. Kawahara, R. Kawahara, S. Kawamoto, A. Kawanishi, S. Kikuchi, H. Kimura, H. Kobuki, K. Koda, G. Kodama, T. Kogita, E. Kojima, A/J Kosai, S. Kosugi, L. Kozai, M. Kubo, J. Kubota, C. Kunihiro, D. Kuramoto, A. Kurata, K. Kusakabe, P. Kusakabe, K. Kuwahara, R. Luders, G/I. Mano, M. Mano, R. Masuda, Masumoto Family, F. Masunaga, M. Matsumoto, J. Mayeda, H. Mizuki, H. Mizuki-Pike, K. Mori, C/M. Murakami, J. Muromoto, K/M. Muromoto, S. Nagai, H. Nagaishi, Y. Nakagawa, J. Nakamura, R. Nakamura, J. Nakano, T. Nakano, D. Nakashima, J.

Nakata, M. Nishizaki, M. Nomura, M. Ohara, J. Ohashi, M. Ohtani, C. Okada, M. Okamura, J. Okazaki, M. Osaki, M.M. Osaki, N. Otsuji, T. Platnick, A. Saito, P/S. Sakaguchi, W. Sakai, K. Sakamoto, K. Sakata, M. Sako, S. Sako, P. Sakuma, T. Sasaki, H. Sato, A. Seko, M. Shibuya, K. Shigaya, M. Shigaya, T. Shigaya, E. Shimbo, M. Shimbo, H. Shimizu, N. Shimizu, F. Shinoda, F. Shintaku, F/Y. Shiogi, S. Shoji, M/G. Sugihara, T. Suwabe, T/G. Suzuka, K. Takamura, K. Takashima, R. Takayoshi, N. Takemura, J. Taketa, H. Taketa, M. Tamura, R. Tanagi, B. Tanaka, R. Tanaka, E. Taniguchi, F. Taniguchi, M. Taniguchi, T. Taniguchi, T. Tanino, M. Tazuma, A/M. Terada, H. Terada, K. Terada, R. Terada, M. Teramoto, V. Terao, T. Todo, F. Tokunaga, T/D. Tokunaga, S. Toyoshima, R. Tsubota, O. Tsuchikawa, M. Tsukamoto, M. Uchida, S. Umeda, M. Wada, J. Wakazuru, B. Williamson, J. Yamada, J/A. Yamada, F. Yamaguchi, H. Yamamoto, H/S. Yamamoto, T. Yamamoto, F. Yamasaki, M. Yanagimoto, K. Yasui, S. Yokota, D. Yoshida, F. Yoshida, K. Yoshida, M. Yoshijima, I. Yoshimura, M. Yoshitake, E. Yoshitome, T. Zumoto.

### Centennial Celebration donations as of 11/12/08

J. Deguchi, F. Fujita, Y. Isomura, B. Kawahara, T. Ko, I. Mano, D. Nishimura, E. Shimbo, E. Taniguchi, R. Yasui.

### SBWA Wednesday Class by Darlene Shimizu Year of the Cow (Shikishi)

Date: Wednesday, January 7, 2009  
Place: Dining Room  
Time: 9:30 am -- noon (please bring sack lunch)  
Instructor: Rikuko Tanaka  
Limit: 8

Please bring the following items: scissors, glue, pencil, ruler, cutting knife, ice pick, & 4 or 5 tooth picks

If you are interested in taking this class, please call Setsu Harada or Darlene Shimizu by way of the Betsuin office at 206 329-0800.

### Calendar:

12/7 Bodhi Day Service  
12/9 SBBWA Executive Committee Meeting  
9:30 AM to 12 noon.  
12/14 Betsuin General Meeting  
12/21 Temple Clean-up

Submitted by Deanna Ikegami

## Dharma School

Dharma School Families - the 2008-2009 Dharma School Directory is now available. If you have not received a copy of the directory, please contact Kari Ann Yokoyama. One copy per family please.

There will be no lunch served this year by the dharma school on temple clean up day, but there will be extra snacks provided in the dining room.

### Classroom reports

#### PreK/Kindergarten classroom report

The PreK/Kindergarten Class had fun this past month with various craft projects reflecting the Buddhist theme of the day. The students made birdfeeders, which taught them about "compassion". They decorated pumpkins, focusing on the "interdependence" of many people and causes that made the pumpkins available to them. For Halloween, the students went through the motions of treat-or-treating while practicing "gratitude". Finally, the students made spiders made out of foam in order

to remember to be kind and gentle to every living thing as taught by the "Golden Chain".

#### First/second grade

Our class talked about kindness to all living things when we read the story "Stella Luna" about a lost bat taken in by a bird mother. We then made bats out of our handprints. We also practiced doing gassho and then cut out some paper hands doing it. We also had a discussion about the elements of the shrine at church and the home obutsudan. We played a matching game that displayed these elements and then made our own paper obutsudan to take home.

#### 6<sup>th</sup>/7<sup>th</sup>/8th grade

Our class treated the pre-K/K students to a Halloween carnival on November 2nd. The events were musical chairs, hide and seek, piñata and a donut bob. The middle schoolers provide an enjoyable time for the younger Dharma school students, as this event has become an annual party started by teacher Nina. We are beginning a food drive to support our temple community.

*Submitted by Joyce Tsuji*

---

## Betsuin Bodhi Day Potluck Sunday, December 7, 2008 After Service and Dharma School In the Gymnasium

Celebrate this special day by bringing your favorite entrée or side dish to share with your fellow SANGHA members!

Just drop your dish off in the gym  
before service.  
Domo arigatoo!

**THANK YOU!**  
**LESLIE SUMIDA**

---

Seattle Betsuin's  
Annual General Meeting  
will take place in the Hondo on  
Sunday, December 14, 2008  
at 11:00 a.m.

**ALL MEMBERS ARE WELCOME**

-Karry Sakamoto

## SEATTLE BETSUIN New Year's Party January 11, 2009



**Tickets available starting  
December 1, 2008**

*Adult Bento: \$10 or  
Kid's Meal: \$5 for age 6 & over;  
free for age 5 and under, (ticket required)*

***Complimentary for Betsuin  
members age 80 and over  
(please sign up at Betsuin Office)***

- Submitted by Yukio Morikubo



Seattle Betsuin Gratefully Acknowledges  
the Following Donations – October/November 2008

**Remembrances for:**

Sadami Maruko  
Roger Masuda  
Satoshi Masuda  
Tom Osako  
Linda Quintua  
Hidetomi Terao

**Given by:**

Keiko & Tsukasa Namekata, Teruo Namekata  
Paul & Wanda Miyahara  
Paul & Wanda Miyahara; Martha Taniguchi  
Seattle Buddhist Church Gojikai; Kuniko Takamura; Elmer Tazuma  
Karry, Sakamoto  
Mack & Setsu Harada; Victoria Terao

**Other:**

**Donor:**

**For:**

Kinue Kuwahara  
Martha Taniguchi

Shizuka LaGrange's 101<sup>st</sup> Birthday  
Shizuka LaGrange's 101<sup>st</sup> Birthday

---

**ABA'S HAWAIIAN BREAKFAST** Thank you for joining us for the ABA Hawaiian Breakfast Fundraiser on Nov. 2nd. We hope everyone enjoyed it. For us, it was a lot of fun, seeing everyone filling the dining room, having great conversations, eating a good breakfast. All the proceeds will go to the ABA Mongolia Project/Maitreya. For more information on the work done by the charity we support, see [www.maitreyacharity.org](http://www.maitreyacharity.org). How grateful we are to have these friends who helped us: Nina, Charlene, Janet, Gei, Ritsuko, Pauline, Ron; and Sue and Greg from Maitreya. Thank you for volunteering to come in so early to help cook, serve, clean up! We did well! Remember that ABA Council (Karry, Cathy, Paul, Dennis, Gail, Machiko, Shizue) welcomes all to join ABA. - Gail Kaminishi and Machiko Wada

---

**You are cordially invited to the  
62nd Annual NW Buddhist Convention**

**“Jodo Shinshu in An Interdependent World” and “Shinran Shonin’s 750<sup>th</sup> Memorial”  
February 13-15, 2009, hosted by the Oregon Buddhist Temple**

- Keynote speaker will be Reverend Dr Taitetsu Unno
- A variety of workshops for adults, (English & Japanese), YBA, and children will be available during the weekend.
- Registration fees are: Adults = \$90, Students gr. 6 – college = \$75; Children K – 5th grade = \$50 (children’s meals), Children 3 -PreK. = \$30 (children’s meals).  
Registration includes Saturday lunch and banquet.

**Registration deadline is December 31, 2008**

- Child care will be available for children under 3 (no meals provided).
- Hotel reservations at the Doubletree Hotel, 100 NE, Multnomah St., Portland, OR 97232; phone: 1-800-996-0510. Request NW Buddhist District Convention rates:  
Premium King (single or double) = \$124 + tax;  
Standard Queen (single or double) = \$114 + tax are the responsibility of the delegates.

**Reserve your hotel rooms by January 14, 2009**

- Sunday BENTO will be available for takeout for \$10



Additional information: [www.OregonBuddhistTemple.com](http://www.OregonBuddhistTemple.com)

## Dharma Exchange October/November 2008

*Editor's Note: Dharma Exchange takes place, usually, each Sunday after the English service from 11:00 a.m. to 11:30 in the dining room. It is an opportunity to ask questions of the minister and discuss the dharma talk of the day and/or events of the day.*

According to Castro sensei on Oct 26, when a man tells a woman he loves her it means he could kill her as well. Love has nuances on many levels. He recounted the story of blind men's descriptions of an elephant -- a rope, hose, fan, and a wall. He asked, what do we really know in life?

Shinshu offers an antidote to arrogant power. It could synthesize as in China -- Shin and Ch'an (Zen). We are living in the last stages of Buddhism, which may merge into some other religion. Dukkha, anger, doubt, suffering, and dissonance are all broad terms.

Elmer offered, whatever you receive be grateful.

A visitor recognized his own ignorance by being around wise people, and realized all his problems are self-created, and he can't blame others. \* \* \*

On Nov. 2 Castro sensei gave some background on the Mongolia Project and the Tibetan lama who is trying to revitalize Buddhism in Mongolia. With the Russians leaving, the economy was devastated and natural disasters occurred. The Betsuin raised money to help with both their lives and spiritual issues. In 1930 most monks were killed, monasteries destroyed, and there was starvation and extermination during the Russian occupation. From 1975-79 170 million died throughout the world and 34 million died in wars. From 1979-2003 in the reign of Saddam Hussein, 300 thousand people died. Now, many know nothing about Buddhism.

The breakfast today at the Betsuin raised money for the Mongolia Project to build *yurts*, educate women with new skills, and provide social welfare. The people are herders as farming is too harsh.

Rev. Julie Hanada recommended the book, *New Year Baby*, by Socheata Poeuv about a Cambodian girl's experiences during the Pol Pot regime.

In high school, Elmer felt wars were necessary to keep the population down

according to an unnamed French philosopher. Sensei offered, "So is being a monk." \* \* \*

On Nov. 9, according to Castro sensei being transformed just happens.

Elmer commented that many Jews in concentration camps said there is no God. In his book, psychoanalyst Dr. Viktor Frankl asserted the best people died in Nazi camps, *Man's Search for Meaning*. Elmer asked, "Is life accidental?" Then he read his poem about nature and life. Carl Jung claimed nothing is accidental. Sensei said we are out of touch with nature, which makes it difficult to make the necessary sacrifices. \* \* \*

Q: On Nov. 16, a participant asked how to explain the meaning of Amida Buddha to friends with no knowledge of Buddhism. A: Castro sensei said Amida Buddha stands for Enlightenment itself. It means eternal life and infinite light. It is limitless, but we are always limiting ourselves. Amida Buddha always embraces us; therefore, there is nothing we need to do. This concept must be comforting to those facing death.

Gandhi postulated that to change something we can't beat up on others. Rather, engage in compassion.

Before World War II, Elmer attended talks in Japanese on Buddhism at the temple. He recalled the feeling of complete freedom. He recounted the story of the lioness who had an injured front paw. She knew she would die as no one could feed her so she simply lay down.

Sensei recounted his experiences of having performed the children's service today where they discussed the concept of Christmas. Santa and Hotei share some similarities -- both are plump, and they have bags of toys for children. Hotei takes away the ills of the world and puts them in his bag.

In Gassho, Pat Bobrow